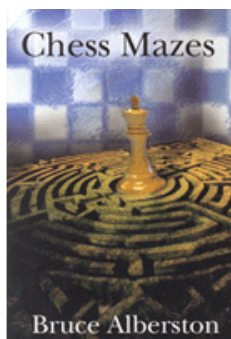




## COLUMNISTS

### Chess Mazes

Bruce Alberston



### CHESS THEATRE

Play through and download the games from [ChessCafe.com](#) in the [DGT Game Viewer](#).

[The Complete DGT Product Line](#)

## Chess Mazes

In the fall of 2004, popular chess author Bruce Alberston released a book called [Chess Mazes](#), designed to help students to develop their visualization and planning skills. *Chess Mazes* was an instant success and [ChessCafe.com](#) was delighted when Bruce agreed to offer a new *Chess Maze* puzzle each week.

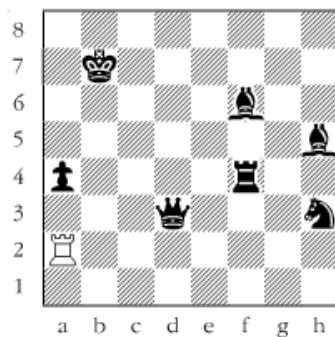
The concept is simple enough: the object is to place the black king in check in the shortest number of moves. The one restriction is that the white piece may not put itself *en prise*, i.e., on a square where it can be captured.

For those who may be interested in a more detailed introduction and overview to these puzzles, we invite you to take a look at the introduction from Bruce's book. Click [here](#) to read more, otherwise, we hope you enjoy this week's *Chess Maze* puzzle...

## A Rook Maze

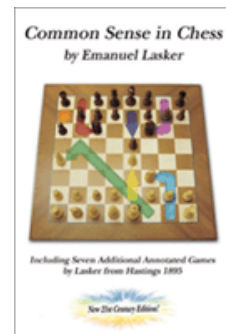
Place the king in check and the maze is solved. The quickest solution is best. Also take care where you place your rook. You don't want it to be taken.

#122



[Scroll down for the solution](#)

Check out these bestselling titles from [USCFSales.com](#):

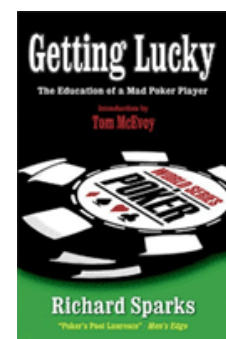


[Common Sense in Chess](#)

by Emanuel Lasker



[Deluxe Tournament Scorebook](#)

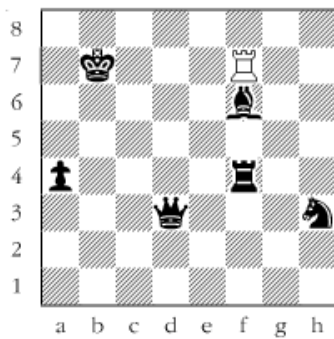


[Getting Lucky](#)

by Richard Sparks

1 Rh2 2 Rh1 3 Rc1 4 Rc5 5 Rxh5 6 Rc5 7 Rc1 8 Re1 9 Re8 10 Rf8 11 Rf7.

#122a



---

© 2008 Bruce Alberston. All Rights Reserved.

---

 [TOP OF PAGE](#)

 [HOME](#)

 [COLUMNS](#)

 [LINKS](#)

 [ARCHIVES](#)

 [ABOUT THE  
CHESS CAFE](#)

[\[ChessCafe Home Page\]](#) [\[Book Review\]](#) [\[Columnists\]](#)  
[\[Endgame Study\]](#) [\[The Skittles Room\]](#) [\[Archives\]](#)  
[\[Links\]](#) [\[Online Bookstore\]](#) [\[About ChessCafe.com\]](#) [\[Contact Us\]](#)

© 2008 CyberCafes, LLC. All Rights Reserved.  
"ChessCafe.com®" is a registered trademark of Russell Enterprises, Inc.