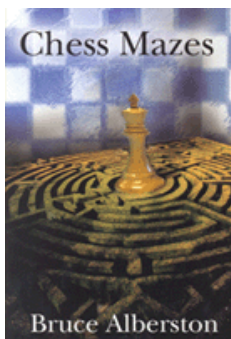




COLUMNISTS

Chess Mazes

Bruce Alberston



CHESSTHEATRE
 Play through and download
 the games from **ChessCafe.com**
 in the [DGT Game Viewer](#).

[The Complete
DGT Product Line](#)

Chess Mazes

In the fall of 2004, popular chess author Bruce Alberston released a book called [Chess Mazes](#), designed to help students to develop their visualization and planning skills. *Chess Mazes* was an instant success and **ChessCafe.com** was delighted when Bruce agreed to offer a new *Chess Maze* puzzle each week.

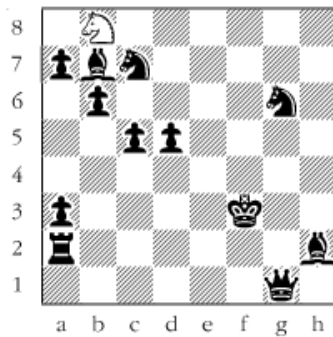
The concept is simple enough: the object is to place the black king in check in the shortest number of moves. The one restriction is that the white piece may not put itself *en prise*, i.e., on a square where it can be captured.

For those who may be interested in a more detailed introduction and overview to these puzzles, we invite you to take a look at the introduction from Bruce's book. Click [here](#) to read more, otherwise, we hope you enjoy this week's *Chess Maze* puzzle...

A Knight Maze

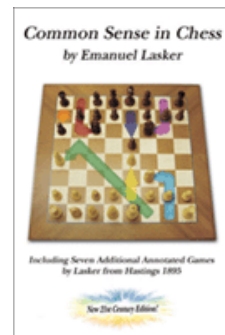
The goal is to check the king with the knight using the quickest method. Even though Black doesn't move, the knight is not allowed to play to a square where it is subject to capture.

#129



[Scroll down for the solution](#)

Check out these
 bestselling titles from
[USCFSales.com](#):



[Common Sense
in Chess](#)
 by Emanuel Lasker



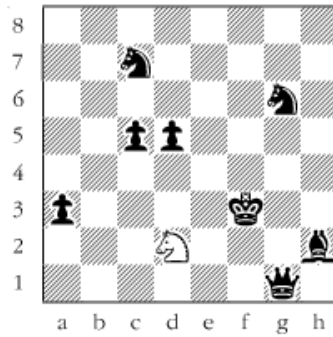
[Deluxe Tournament
Scorebook](#)



[Getting Lucky](#)
 by Richard Sparks

1 Nd7 2 Nf6 3 Ng8 4 Nh6 5 Nf7 6 Nd8 7 Nxb7 8 Nd8 9 Nc6 10 Nxa7 11
Nc8 12 Nxb6 13 Na4 14 Nc3 15 Nxa2 16 Nc3 17 Na4 18 Nb6 19 Nc8 20
Na7 [or 19 Nd7 20 Nb8] 21 Nc6 22 Na5 23 Nb3 24 Nd2.

#129a



© 2008 Bruce Alberston. All Rights Reserved.

 [TOP OF PAGE](#)

 [HOME](#)

 [COLUMNS](#)

 [LINKS](#)

 [ARCHIVES](#)

 [ABOUT THE
CHESS CAFE](#)

[\[ChessCafe Home Page\]](#) [\[Book Review\]](#) [\[Columnists\]](#)

[\[Endgame Study\]](#) [\[The Skittles Room\]](#) [\[Archives\]](#)

[\[Links\]](#) [\[Online Bookstore\]](#) [\[About ChessCafe.com\]](#) [\[Contact Us\]](#)

© 2008 CyberCafes, LLC. All Rights Reserved.

"**ChessCafe.com**®" is a registered trademark of Russell Enterprises, Inc.