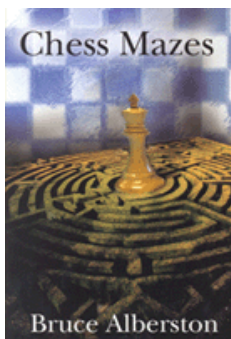




COLUMNISTS

Chess Mazes

Bruce Alberston



CHESSTHEATRE
 Play through and download
 the games from **ChessCafe.com**
 in the [DGT Game Viewer](#).

[The Complete
DGT Product Line](#)

Chess Mazes

In the fall of 2004, popular chess author Bruce Alberston released a book called [Chess Mazes](#), designed to help students to develop their visualization and planning skills. *Chess Mazes* was an instant success and **ChessCafe.com** was delighted when Bruce agreed to offer a new *Chess Maze* puzzle each week.

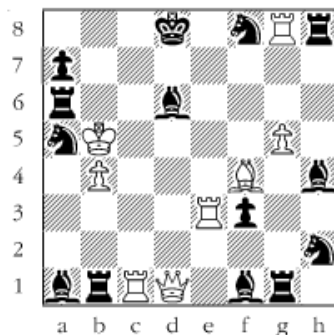
The concept is simple enough: the object is to place the black king in check in the shortest number of moves. The one restriction is that the white piece may not put itself *en prise*, i.e., on a square where it can be captured.

For those who may be interested in a more detailed introduction and overview to these puzzles, we invite you to take a look at the introduction from Bruce's book. Click [here](#) to read more, otherwise, we hope you enjoy this week's *Chess Maze* puzzle...

A King Maze

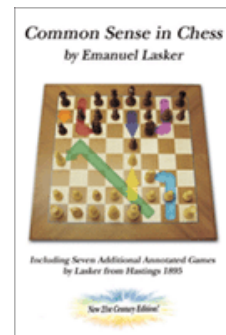
White to move only his king and set up a fatal discovered mate. It takes a while.

#132



[Scroll down for the solution](#)

Check out these
 bestselling titles from
[USCFSales.com](#):



[Common Sense
in Chess](#)
 by Emanuel Lasker



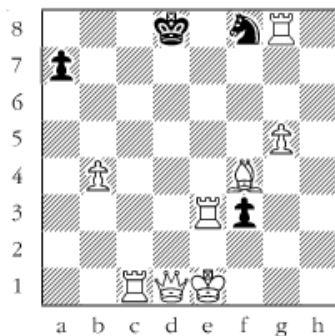
[Deluxe Tournament
Scorebook](#)



[Getting Lucky](#)
 by Richard Sparks

1 Ka4 2 Ka3 3 Ka2 4 Kxb1 5 Kxa1 6 Kb2 7 Kc3 8 Kd4 9 Ke4 10 Kf5
 11 Kf6 12 Kg7 13 Kxh8 14 Kg7 15 Kh6 16 Kh5 17 Kxh4 18 Kh5 19
 Kh6 20 Kg7 21 Kf6 22 Kf5 23 Ke4 24 Kd4 25 Kc3 26 Kd2 27 Ke1 28
 Kf2 29 Kxg1 30 Kxh2 31 Kg1 32 Kxf1 33 Ke1 34 Kd2 35 Kc2 [Kc3]
 36 Kb2 37 Ka3 38 Ka4 39 Kb5 40 Kxa6 41 Kxa5 42 Kb5 43 Kc6 44
 Kxd6 45 Kd5 46 Kd4 47 Kd3 48 Kd2 49 Ke1#.

#132a



© 2008 Bruce Alberston. All Rights Reserved.

 [TOP OF PAGE](#)

 [HOME](#)

 [COLUMNS](#)

 [LINKS](#)

 [ARCHIVES](#)

 [ABOUT THE
CHESS CAFE](#)

[\[ChessCafe Home Page\]](#) [\[Book Review\]](#) [\[Columnists\]](#)

[\[Endgame Study\]](#) [\[The Skittles Room\]](#) [\[Archives\]](#)

[\[Links\]](#) [\[Online Bookstore\]](#) [\[About ChessCafe.com\]](#) [\[Contact Us\]](#)

© 2008 CyberCafes, LLC. All Rights Reserved.

"**ChessCafe.com**®" is a registered trademark of Russell Enterprises, Inc.