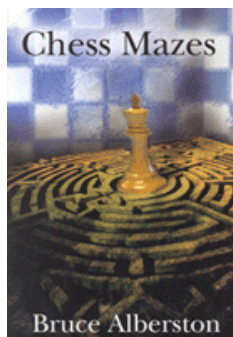




COLUMNISTS

Chess Mazes

Bruce Alberston



CHESSTHEATRE
 Play through and download
 the games from **ChessCafe.com**
 in the [DGT Game Viewer](#).

[The Complete
DGT Product Line](#)

Chess Mazes

In the fall of 2004, popular chess author Bruce Alberston released a book called [Chess Mazes](#), designed to help students to develop their visualization and planning skills. *Chess Mazes* was an instant success and **ChessCafe.com** was delighted when Bruce agreed to offer a new *Chess Maze* puzzle each week.

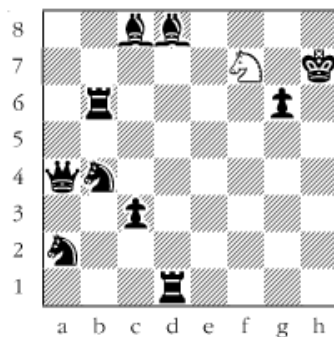
The concept is simple enough: the object is to place the black king in check in the shortest number of moves. The one restriction is that the white piece may not put itself *en prise*, i.e., on a square where it can be captured.

For those who may be interested in a more detailed introduction and overview to these puzzles, we invite you to take a look at the introduction from Bruce's book. Click [here](#) to read more, otherwise, we hope you enjoy this week's *Chess Maze* puzzle...

A Knight Maze

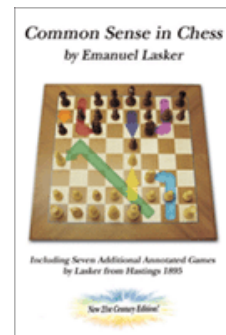
Check to the king (a) over the fastest route (b) over uncapturable squares. You can take enemy guys. In fact you'll have to.

#135



[Scroll down for the solution](#)

Check out these
 bestselling titles from
[USCFSales.com](#):



[Common Sense
in Chess](#)
 by Emanuel Lasker



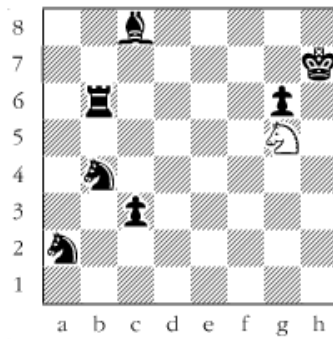
[Deluxe Tournament
Scorebook](#)



[Getting Lucky](#)
 by Richard Sparks

1 Ne5 2 Nc4 3 Ne3 4 Ng2 5 Nf4 6 Ne2 7 Ng3 8 Ne4 9 Nc5 10 Nxa4 11
Nc5 12 Ne4 13 Nf2 14 Nxd1 15 Ne3 16 Nc4 17 Ne5 18 Nf7 19 Nxd8 20
Nf7 21 Ng5+.

#135a



© 2008 Bruce Alberston. All Rights Reserved.

 [TOP OF PAGE](#)

 [HOME](#)

 [COLUMNS](#)

 [LINKS](#)

 [ARCHIVES](#)

 [ABOUT THE
CHESS CAFE](#)

[\[ChessCafe Home Page\]](#) [\[Book Review\]](#) [\[Columnists\]](#)
[\[Endgame Study\]](#) [\[The Skittles Room\]](#) [\[Archives\]](#)
[\[Links\]](#) [\[Online Bookstore\]](#) [\[About ChessCafe.com\]](#) [\[Contact Us\]](#)

© 2008 CyberCafes, LLC. All Rights Reserved.
"ChessCafe.com®" is a registered trademark of Russell Enterprises, Inc.