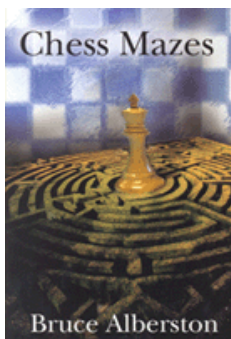




COLUMNISTS

Chess Mazes

Bruce Alberston



CHESSTHEATRE
 Play through and download
 the games from **ChessCafe.com**
 in the [DGT Game Viewer](#).

[The Complete](#)
[DGT Product Line](#)

Chess Mazes

In the fall of 2004, popular chess author Bruce Alberston released a book called [Chess Mazes](#), designed to help students to develop their visualization and planning skills. *Chess Mazes* was an instant success and **ChessCafe.com** was delighted when Bruce agreed to offer a new *Chess Maze* puzzle each week.

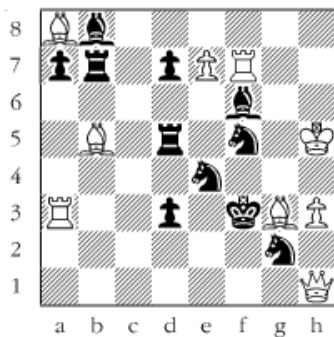
The concept is simple enough: the object is to place the black king in check in the shortest number of moves. The one restriction is that the white piece may not put itself *en prise*, i.e., on a square where it can be captured.

For those who may be interested in a more detailed introduction and overview to these puzzles, we invite you to take a look at the introduction from Bruce's book. Click [here](#) to read more, otherwise, we hope you enjoy this week's *Chess Maze* puzzle...

A King Maze

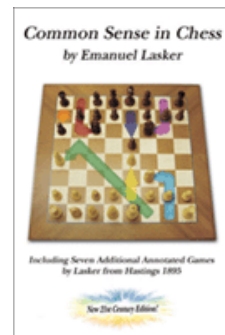
The white king is the only moving piece and the play is for mate. It has to be a discovery and may not be discovered check.

#138



Scroll down for the solution

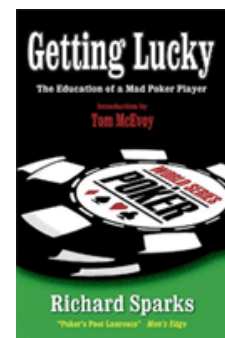
Check out these
 bestselling titles from
[USCFSales.com](#):



[Common Sense](#)
[in Chess](#)
 by Emanuel Lasker



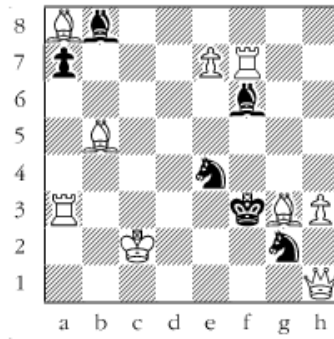
[Deluxe Tournament](#)
[Scorebook](#)



[Getting Lucky](#)
 by Richard Sparks

1.Kg6 2.Kh7 3.Kg8 4.Kf8 5.Ke8 6.Kd8 7.Kc8 8.Kxb7 9.Ka6 10.Ka5 11.
Kb4 12.Kc4 13.Kxd5 14.Kc4 15.Kb4 16.Ka5 17.Ka6 18.Kb7 19.Kc8
20.Kxd7 21.Ke6 22.Kxf5 23.Ke6 24.Kd5 25.Kc4 26.Kxd3 27.Kc2#

#138a



© 2008 Bruce Alberston. All Rights Reserved.

 [TOP OF PAGE](#)

 [HOME](#)

 [COLUMNS](#)

 [LINKS](#)

 [ARCHIVES](#)

 [ABOUT THE
CHESS CAFE](#)

[\[ChessCafe Home Page\]](#) [\[Book Review\]](#) [\[Columnists\]](#)
[\[Endgame Study\]](#) [\[The Skittles Room\]](#) [\[Archives\]](#)
[\[Links\]](#) [\[Online Bookstore\]](#) [\[About ChessCafe.com\]](#) [\[Contact Us\]](#)

© 2008 CyberCafes, LLC. All Rights Reserved.
"ChessCafe.com®" is a registered trademark of Russell Enterprises, Inc.