



## COLUMNISTS

### Chess Mazes

Bruce Alberston



**CHESSTHEATRE**  
 Play through and download  
 the games from **ChessCafe.com** in the [DGT Game Viewer](#).

[The Complete  
DGT Product Line](#)

## Chess Mazes

In the fall of 2004, popular chess author Bruce Alberston released a book called [Chess Mazes](#), designed to help students to develop their visualization and planning skills. *Chess Mazes* was an instant success and **ChessCafe.com** was delighted when Bruce agreed to offer a new *Chess Maze* puzzle each week.

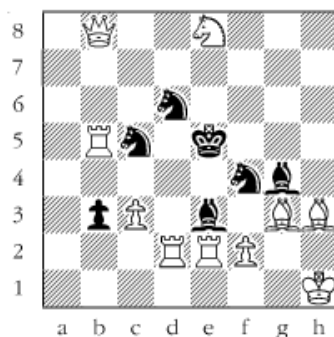
The concept is simple enough: the object is to place the black king in check in the shortest number of moves. The one restriction is that the white piece may not put itself *en prise*, i.e., on a square where it can be captured.

For those who may be interested in a more detailed introduction and overview to these puzzles, we invite you to take a look at the introduction from Bruce's book. Click [here](#) to read more, otherwise, we hope you enjoy this week's *Chess Maze* puzzle...

## A King Maze

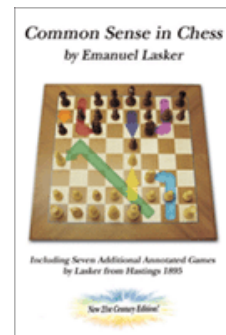
The white king to deliver discovered mate. Check is not allowed, else we'd have to let Black move, and we don't do that.

#144



[Scroll down for the solution](#)

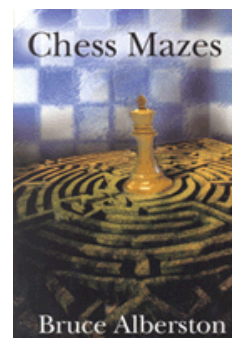
Check out these  
 bestselling titles from  
[USCFSales.com](#):



[Common Sense  
in Chess](#)  
 by Emanuel Lasker



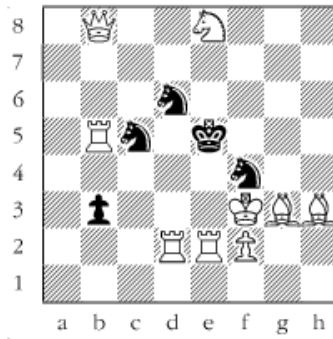
[Deluxe Tournament  
Scorebook](#)



Bruce Alberston  
[Chess Mazes](#)  
 by Bruce Alberston

1 Kg1 2 Kf1 3 Ke1 4 Kd1 5 Kc1 6 Kb2 7 Ka3 8 Kb4 9 Ka5 10 Kb6 11 Kc7 12 Kd8 13 Ke7 14 Kf8 15 Kg7 16 Kh6 17 Kg5 18 Kxg4 19 Kf3 20 Kxe3 21 Kf3#

#144a



© 2008 Bruce Alberston. All Rights Reserved.

 [TOP OF PAGE](#)

 [HOME](#)

 [COLUMNS](#)

 [LINKS](#)

 [ARCHIVES](#)

 [ABOUT THE CHESS CAFE](#)

[\[ChessCafe Home Page\]](#) [\[Book Review\]](#) [\[Columnists\]](#)  
[\[Endgame Study\]](#) [\[The Skittles Room\]](#) [\[Archives\]](#)  
[\[Links\]](#) [\[Online Bookstore\]](#) [\[About ChessCafe.com\]](#) [\[Contact Us\]](#)

© 2008 CyberCafes, LLC. All Rights Reserved.  
**"ChessCafe.com®"** is a registered trademark of Russell Enterprises, Inc.