



COLUMNISTS

Chess Mazes

Bruce Alberston



CHESSTHEATRE
 Play through and download
 the games from **ChessCafe.com** in the [DGT Game Viewer](#).

[The Complete
DGT Product Line](#)

Chess Mazes

In the fall of 2004, popular chess author Bruce Alberston released a book called [Chess Mazes](#), designed to help students to develop their visualization and planning skills. *Chess Mazes* was an instant success and **ChessCafe.com** was delighted when Bruce agreed to offer a new *Chess Maze* puzzle each week.

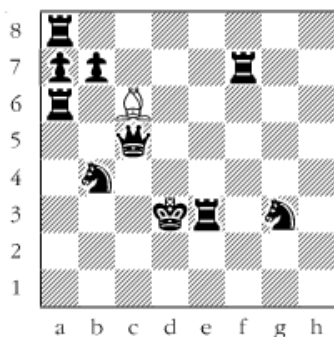
The concept is simple enough: the object is to place the black king in check in the shortest number of moves. The one restriction is that the white piece may not put itself *en prise*, i.e., on a square where it can be captured.

For those who may be interested in a more detailed introduction and overview to these puzzles, we invite you to take a look at the introduction from Bruce's book. Click [here](#) to read more, otherwise, we hope you enjoy this week's *Chess Maze* puzzle...

A Bishop Maze

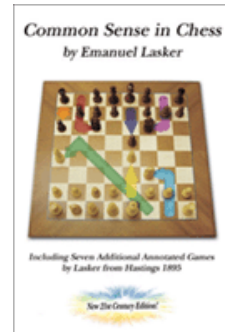
Place the black king in check with the bishop. Stay off squares where the bishop can be taken and shoot for the shortest solution.

#145



[Scroll down for the solution](#)

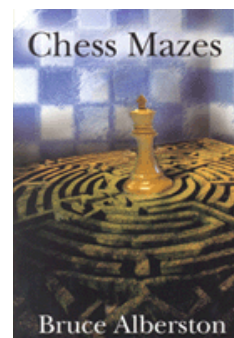
Check out these
 bestselling titles from
[USCFSales.com](#):



[Common Sense
in Chess](#)
 by Emanuel Lasker



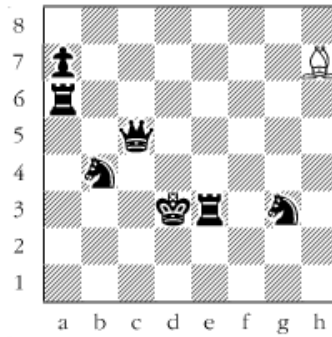
[Deluxe Tournament
Scorebook](#)



Bruce Alberston
[Chess Mazes](#)
 by Bruce Alberston

1 Bg2 2 Bh3 3 Bg4 4 Bd1 5 Bb3 6 Bxf7 7 Bb3 8 Bd1 9 Bg4 10 Bh3 11
Bg2 12 Bxb7 13 Bxa8 14 Bg2 15 Bh3 16 Bg4 17 Bd1 18 Bb3 19 Bg8 20
Bh7+

#145a



© 2008 Bruce Alberston. All Rights Reserved.

 [TOP OF PAGE](#)

 [HOME](#)

 [COLUMNS](#)

 [LINKS](#)

 [ARCHIVES](#)

 [ABOUT THE
CHESS CAFE](#)

[\[ChessCafe Home Page\]](#) [\[Book Review\]](#) [\[Columnists\]](#)

[\[Endgame Study\]](#) [\[The Skittles Room\]](#) [\[Archives\]](#)

[\[Links\]](#) [\[Online Bookstore\]](#) [\[About ChessCafe.com\]](#) [\[Contact Us\]](#)

© 2008 CyberCafes, LLC. All Rights Reserved.

"**ChessCafe.com**®" is a registered trademark of Russell Enterprises, Inc.