



COLUMNISTS

Chess Mazes

Bruce Alberston



CHESSTHEATRE
 Play through and download
 the games from **ChessCafe.com** in the [DGT Game Viewer](#).

[The Complete
DGT Product Line](#)

Chess Mazes

In the fall of 2004, popular chess author Bruce Alberston released a book called [Chess Mazes](#), designed to help students to develop their visualization and planning skills. *Chess Mazes* was an instant success and **ChessCafe.com** was delighted when Bruce agreed to offer a new *Chess Maze* puzzle each week.

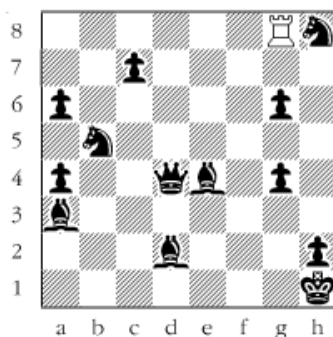
The concept is simple enough: the object is to place the black king in check in the shortest number of moves. The one restriction is that the white piece may not put itself *en prise*, i.e., on a square where it can be captured.

For those who may be interested in a more detailed introduction and overview to these puzzles, we invite you to take a look at the introduction from Bruce's book. Click [here](#) to read more, otherwise, we hope you enjoy this week's *Chess Maze* puzzle...

A Rook Maze

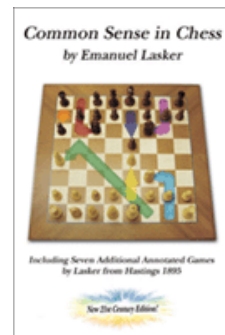
The white rook checks the king using the shortest path. The rook can make captures, but must avoid being captured itself.

#146



[Scroll down for the solution](#)

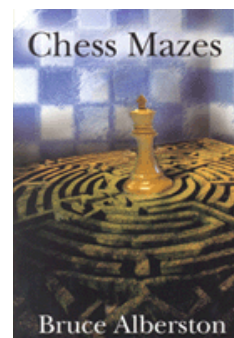
Check out these
 bestselling titles from
[USCFSales.com](#):



[Common Sense
in Chess](#)
 by Emanuel Lasker



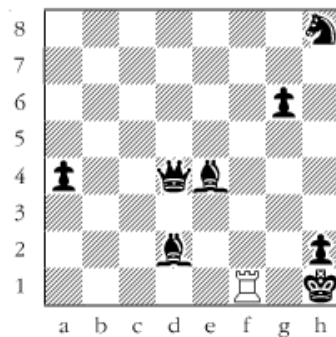
[Deluxe Tournament
Scorebook](#)



Bruce Alberston
[Chess Mazes](#)
 by Bruce Alberston

1 Re8 2 Re6 3 Rxa6 4 Re6 5 Re8 6 Rb8 7 Rxb5 8 Rb8 9 Rc8 10 Rxc7
 11 Rh7 12 Rh4 13 Rxc4 14 Rg3 15 Rxa3 16 Rh3 17 Rh7 18 Re7 (or 18
 Rc7 and 19 Rc8) 19 Re8 20 Rf8 21 Rf1+

#146a



© 2008 Bruce Alberston. All Rights Reserved.

 [TOP OF PAGE](#)

 [HOME](#)

 [COLUMNS](#)

 [LINKS](#)

 [ARCHIVES](#)

 [ABOUT THE
CHESS CAFE](#)

[\[ChessCafe Home Page\]](#) [\[Book Review\]](#) [\[Columnists\]](#)
[\[Endgame Study\]](#) [\[The Skittles Room\]](#) [\[Archives\]](#)
[\[Links\]](#) [\[Online Bookstore\]](#) [\[About ChessCafe.com\]](#) [\[Contact Us\]](#)

© 2008 CyberCafes, LLC. All Rights Reserved.
 "ChessCafe.com®" is a registered trademark of Russell Enterprises, Inc.