



COLUMNISTS

Chess Mazes

Bruce Alberston



CHESSTHEATRE
Play through and download
the games from **ChessCafe.com** in the [DGT Game Viewer](#).

[The Complete
DGT Product Line](#)

Chess Mazes

In the fall of 2004, popular chess author Bruce Alberston released a book called [Chess Mazes](#), designed to help students to develop their visualization and planning skills. *Chess Mazes* was an instant success and **ChessCafe.com** was delighted when Bruce agreed to offer a new *Chess Maze* puzzle each week.

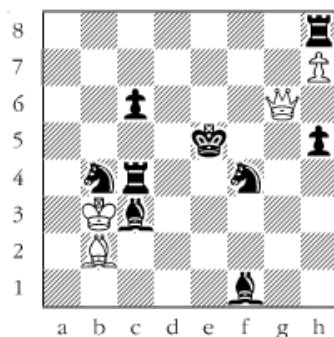
The concept is simple enough: the object is to place the black king in check in the shortest number of moves. The one restriction is that the white piece may not put itself *en prise*, i.e., on a square where it can be captured.

For those who may be interested in a more detailed introduction and overview to these puzzles, we invite you to take a look at the introduction from Bruce's book. Click [here](#) to read more, otherwise, we hope you enjoy this week's *Chess Maze* puzzle...

A King Maze

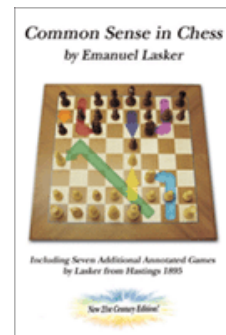
The white king moves around the board, eventually discovering mate. No moving into check, that's illegal.

#150

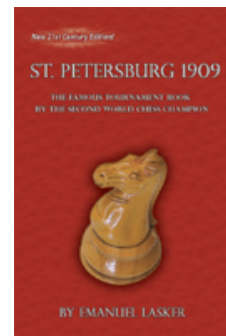


[Scroll down for the solution](#)

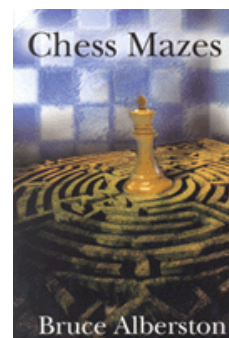
Check out these
bestselling titles from
[USCFSales.com](#):



[Common Sense
in Chess](#)
by Emanuel Lasker



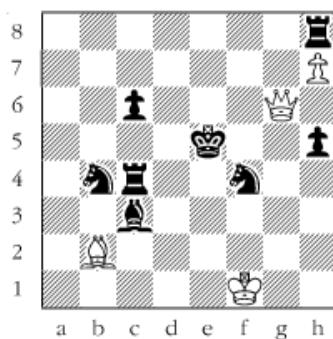
[St. Petersburg 1909](#)
by Emanuel Lasker



[Chess Mazes](#)
by Bruce Alberston

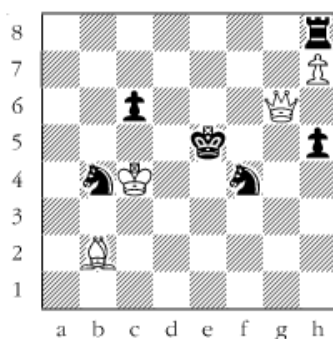
1 Ka4 2 Ka5 3 Kb6 4 Kc7 5 Kd7 6 Ke7 7 Kf7 8 Kg7 9 Kh6 10 Kg5 11
Kh4 12 Kg3 13 Kf2 14 Kxf1

#150a



15 Kf2 16 Kg3 17 Kh4 18 Kg5 19 Kh6 20 Kg7 21 Kf7 22 Ke7 23 Kd7
24 Kc7 25 Kb6 26 Ka5 27 Ka4 28 Kb3 29 Kxc4 30 Kxc3 31 Kc4#

#150b



© 2008 Bruce Alberston. All Rights Reserved.



[TOP OF PAGE](#)



[HOME](#)



[COLUMNS](#)



[LINKS](#)



[ARCHIVES](#)



[ABOUT THE
CHESS CAFE](#)

[\[ChessCafe Home Page\]](#) [\[Book Review\]](#) [\[Columnists\]](#)

[\[Endgame Study\]](#) [\[The Skittles Room\]](#) [\[Archives\]](#)

[\[Links\]](#) [\[Online Bookstore\]](#) [\[About ChessCafe.com\]](#) [\[Contact Us\]](#)

© 2008 CyberCafes, LLC. All Rights Reserved.

"**ChessCafe.com**®" is a registered trademark of Russell Enterprises, Inc.