



COLUMNISTS

Chess Mazes

Bruce Alberston

[\[Find us on Facebook.\]](#)

Chess Mazes

There are two types of chess mazes: *checking* and *mating*. For bishop, rook, and knight mazes the play is to **check** the black king. For queen, pawn, and king mazes the object is to **checkmate** the enemy king; here checks are not allowed.

The rules in common for each type of maze are as follows:

1. Black never moves.
2. Only the maze piece (in the case of pawns—the maze units) may move.
3. A maze piece may never move to a square commanded by enemy forces.
4. A maze piece may capture undefended enemy forces.
5. Plus we look for the shortest solution.

Helpers in queen and king mazes are frozen to the diagram position, unable to move or be removed. In pawn mazes promoted pawns are unable to move off their promotion squares. Also move order may be juggled without harm to the solution. Often, when running up the board to promote, pawns can advance in different sequences.

For those who may be interested in a more detailed introduction and overview to [chess maze puzzles](#), we invite you to read more; otherwise, we hope you enjoy this week's *Chess Maze* ...

A Pawn Maze

In pawn mazes the move sequence can be varied with no harm to the solution. Still, caution is required as some moves must be played before others. For example – White's first move.

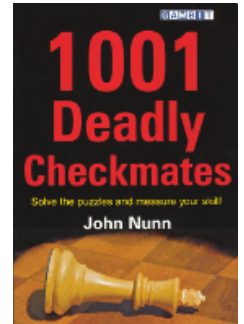
#275a



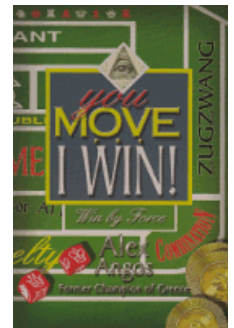
[FEN "1q6/Pb6/8/7n/P1Pn2P1/4r3/1k3PP1/1r6"]

[Scroll down for the solution](#)

Purchases from our [chess shop](#) help keep [ChessCafe.com](#) freely accessible:

[1001 Deadly Checkmates](#)

by John Nunn

[You Move... I Win!](#)

by Alex Angos

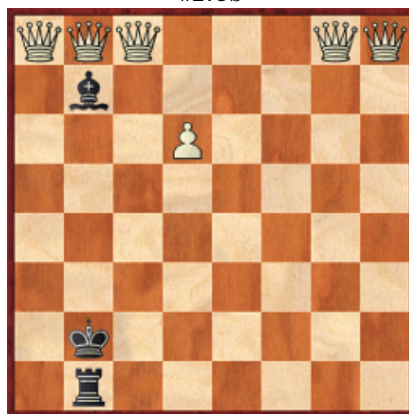
[Solitaire Chess \(Logic Game\)](#)

Think Fun



1 axb8/Q 2 fxe3 3 exd4 4 a5 5 a6 6 a7 7 a8/Q 8 c5 9 c6 10 c7 11 c8/Q 12 d5
13 d6 14 gxh5 15 g4 16 g5 17 g6 18 g7 19 g8/Q 20 h6 21 h7 22 h8/Q#

#275b



[FEN "QQQ3QQ/1b6/3P4/8/8/1k6/1r6"]

© 2011 Bruce Alberston. All Rights Reserved.

Comment on this week's Chess Maze via our [Contact Page](#).

 [TOP OF PAGE](#)

 [HOME](#)

 [COLUMNS](#)

 [LINKS](#)

 [ARCHIVES](#)

 [ABOUT THE
CHESS CAFE](#)

[\[ChessCafe Home Page\]](#) [\[Book Review\]](#) [\[Columnists\]](#)
[\[Endgame Study\]](#) [\[The Skittles Room\]](#) [\[ChessCafe Archives\]](#)
[\[ChessCafe Links\]](#) [\[Online Bookstore\]](#) [\[About ChessCafe.com\]](#)
[\[Contact ChessCafe.com\]](#)

© 2011 BrainGamz, Inc. All Rights Reserved.
"ChessCafe.com®" is a registered trademark of BrainGamz, Inc.