



COLUMNISTS

Chess Mazes

Bruce Alberston

[\[Find us on Facebook.\]](#)



Chess Mazes

There are two types of chess mazes: *checking* and *mating*. For bishop, rook, and knight mazes the play is to **check** the black king. For queen, pawn, and king mazes the object is to **checkmate** the enemy king; here checks are not allowed.

The rules in common for each type of maze are as follows:

1. Black never moves.
2. Only the maze piece (in the case of pawns—the maze units) may move.
3. A maze piece may never move to a square commanded by enemy forces.
4. A maze piece may capture undefended enemy forces.
5. Plus we look for the shortest solution.

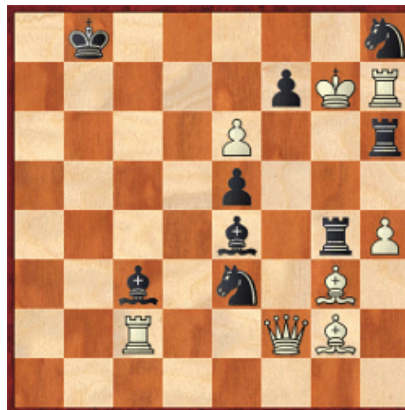
Helpers in queen and king mazes are frozen to the diagram position, unable to move or be removed. In pawn mazes promoted pawns are unable to move off their promotion squares. Also move order may be juggled without harm to the solution. Often, when running up the board to promote, pawns can advance in different sequences.

For those who may be interested in a more detailed introduction and overview to [chess maze puzzles](#), we invite you to read more; otherwise, we hope you enjoy this week's *Chess Maze* ...

A King Maze

The mating piece is the g3-bishop and the e5-pawn will have to go to clear the line. What else has to be taken?

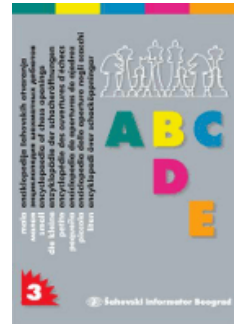
#282a



[FEN "1k5n/5pKR/4P2r/4p3/4b1rP/2b1n1B1/2R2QB1/8"]

Scroll down for the solution

Purchases from our [chess shop](#) help keep ChessCafe.com freely accessible:



Small ECO
by Chess Informant



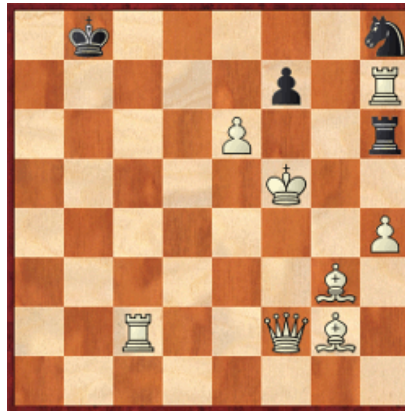
Slay the Spanish!
by Timothy Taylor



*Tactics: from Basics to
Brilliance, Vol. 1*
by Valerie Lilov

1 Kf8 2 Ke7 3 Kd6 4 Kc5 5 Kb5 6 Ka4 7 Kb3 8 Kxc3 9 Kd2 10 Kxe3 11
Ke2 12 Kf1 13 Kg1 14 Kh2 15 Kh3 16 Kxg4 17 Kh3 18 Kh2 19 Kg1 20
Kf1 21 Ke2 22 Ke3 23 Kxe4 24 Kxe5 25 Kf5#

#282b



[FEN "1k5n/5p1R/4P2r/5K2/7P/6B1/2R2QB1/8"]

© 2011 Bruce Alberston. All Rights Reserved.

Comment on this week's Chess Maze via our [Contact Page](#).

 [TOP OF PAGE](#)

 [HOME](#)

 [COLUMNS](#)

 [LINKS](#)

 [ARCHIVES](#)

 [ABOUT THE
CHESS CAFE](#)

[\[ChessCafe Home Page\]](#) [\[Book Review\]](#) [\[Columnists\]](#)
[\[Endgame Study\]](#) [\[The Skittles Room\]](#) [\[ChessCafe Archives\]](#)
[\[ChessCafe Links\]](#) [\[Online Bookstore\]](#) [\[About ChessCafe.com\]](#)
[\[Contact ChessCafe.com\]](#)

© 2011 BrainGamz, Inc. All Rights Reserved.
"ChessCafe.com®" is a registered trademark of BrainGamz, Inc.