



COLUMNISTS

Chess Mazes

Bruce Alberston

[\[Find us on Facebook.\]](#)

Chess Mazes

There are two types of chess mazes: *checking* and *mating*. For bishop, rook, and knight mazes the play is to **check** the black king. For queen, pawn, and king mazes the object is to **checkmate** the enemy king; here checks are not allowed.

The rules in common for each type of maze are as follows:

1. Black never moves.
2. Only the maze piece (in the case of pawns—the maze units) may move.
3. A maze piece may never move to a square commanded by enemy forces.
4. A maze piece may capture undefended enemy forces.
5. Plus we look for the shortest solution.

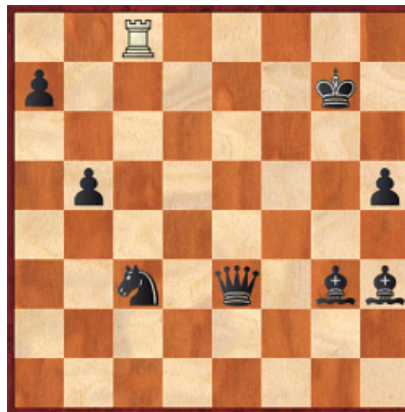
Helpers in queen and king mazes are frozen to the diagram position, unable to move or be removed. In pawn mazes promoted pawns are unable to move off their promotion squares. Also move order may be juggled without harm to the solution. Often, when running up the board to promote, pawns can advance in different sequences.

For those who may be interested in a more detailed introduction and overview to [chess maze puzzles](#), we invite you to read more; otherwise, we hope you enjoy this week's *Chess Maze* ...

A Rook Maze

The first five rook moves are the same. Then come the branches leading to two different mates.

#284a Two Solutions



[FEN "2R5/p5k1/8/1p5p/8/2n1q1bb/8/8"]

[Scroll down for the solution](#)

Purchases from our [chess shop](#) help keep [ChessCafe.com](#) freely accessible:



[ChessBase Magazine #141](#)
by Rainer Knaak



[The Meran & Anti-Meran Variations](#)
by Alexey Dreev



[Braille Chess Set and Board](#)

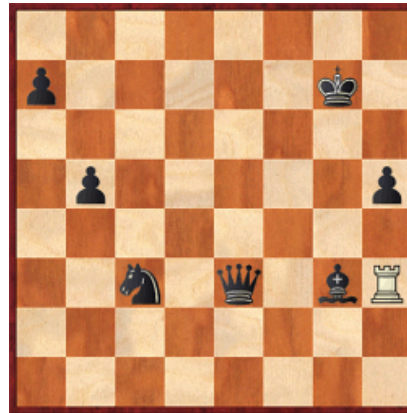
Free Shipping!
On all Orders
More than \$75!

UPS GROUND
Only.



1 Rc6 2 Ra6 3 Ra1 4 Rh1 5 Rxh3

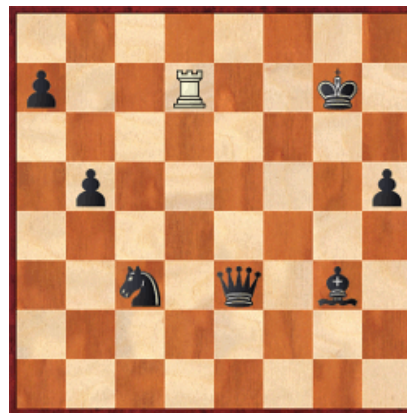
#284b The Common Position



[FEN "8/p5k1/8/1p5p/8/2n1q1bR/8/8"]

(a) 6 Rh1 7 Ra1 8 Ra6 9 Rc6 10 Rc8 11 Rd8 12 Rd7+

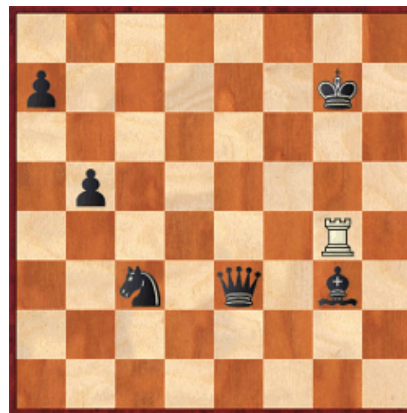
#284c



[FEN "8/p2R2k1/8/1p5p/8/2n1q1b1/8/8"]

(b) 6 Rxh5 7 Rh1 8 Ra1 9 Ra3 10 Rb3 11 Rb4 12 Rg4+

#284d



[FEN "8/p5k1/8/1p6/6R1/2n1q1b1/8/8"]

Comment on this week's Chess Maze via our [Contact Page](#).

 [TOP OF PAGE](#)

 [HOME](#)

 [COLUMNS](#)

 [LINKS](#)

 [ARCHIVES](#)

 [ABOUT THE
CHESS CAFE](#)

[\[ChessCafe Home Page\]](#) [\[Book Review\]](#) [\[Columnists\]](#)
[\[Endgame Study\]](#) [\[The Skittles Room\]](#) [\[ChessCafe Archives\]](#)
[\[ChessCafe Links\]](#) [\[Online Bookstore\]](#) [\[About ChessCafe.com\]](#)
[\[Contact ChessCafe.com\]](#)

© 2011 BrainGamz, Inc. All Rights Reserved.
"ChessCafe.com®" is a registered trademark of BrainGamz, Inc.