

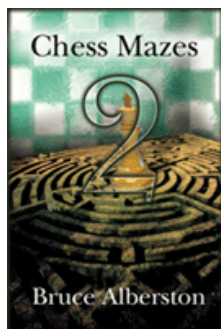


COLUMNISTS

Chess Mazes

Bruce Alberston

[\[Find us on Facebook.\]](#)



Chess Mazes

There are two types of chess mazes: *checking* and *mating*. For bishop, rook, and knight mazes the play is to **check** the black king. For queen, pawn, and king mazes the object is to **checkmate** the enemy king; here checks are not allowed.

The rules in common for each type of maze are as follows:

1. Black never moves.
2. Only the maze piece (in the case of pawns—the maze units) may move.
3. A maze piece may never move to a square commanded by enemy forces.
4. A maze piece may capture undefended enemy forces.
5. Plus we look for the shortest solution.

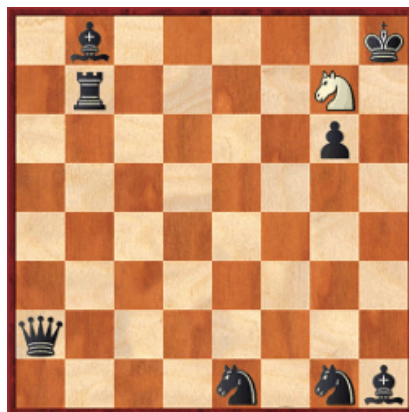
Helpers in queen and king mazes are frozen to the diagram position, unable to move or be removed. In pawn mazes promoted pawns are unable to move off their promotion squares. Also move order may be juggled without harm to the solution. Often, when running up the board to promote, pawns can advance in different sequences.

For those who may be interested in a more detailed introduction and overview to [chess maze puzzles](#), we invite you to read more; otherwise, we hope you enjoy this week's *Chess Maze* ...

A Knight Maze

The question is "How many black pieces have to be removed before the knight can give check?" The answer may surprise you.

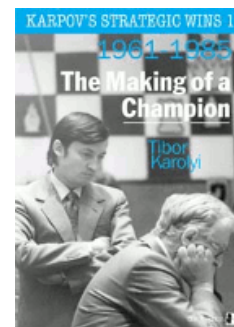
#291a



[FEN "1b5k/1r4N1/6p1/8/8/8/q7/4n1nb"]

[Scroll down for the solution](#)

Purchases from our [chess shop](#) help keep [ChessCafe.com](#) freely accessible:



[Karpov's Strategic Wins 1](#)

by Tibor Karolyi



[Karpov's Strategic Wins 2](#)

by Tibor Karolyi



[What Grandmasters Don't See](#)

by Maurice Ashley

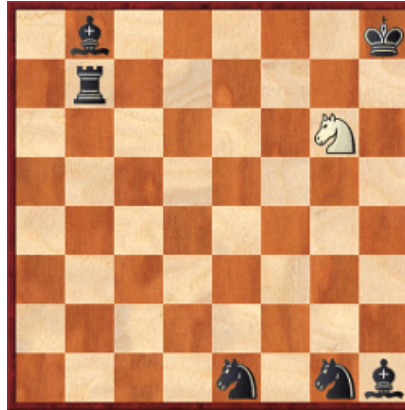
Free Shipping!
On all Orders
More than \$75!

UPS Ground
or Media Mail



1 Ne8 2 Nf6 3 Ng4 4 Ne3 5 Nd1 6 Nc3 7 Nxa2 8 Nc3 9 Na4 10 Nc5 11 Ne6
12 Nf8 13 Nxc6+

#291b



[FEN "1b5k/1r6/6N1/8/8/8/8/4n1nb"]

© 2011 Bruce Alberston. All Rights Reserved.

Comment on this week's Chess Maze via our [Contact Page](#).

 [TOP OF PAGE](#)

 [HOME](#)

 [COLUMNS](#)

 [LINKS](#)

 [ARCHIVES](#)

 [ABOUT THE
CHESS CAFE](#)

[\[ChessCafe Home Page\]](#) [\[Book Review\]](#) [\[Columnists\]](#)
[\[Endgame Study\]](#) [\[The Skittles Room\]](#) [\[ChessCafe Archives\]](#)
[\[ChessCafe Links\]](#) [\[Online Bookstore\]](#) [\[About ChessCafe.com\]](#)
[\[Contact ChessCafe.com\]](#)

© 2011 BrainGamz, Inc. All Rights Reserved.
"ChessCafe.com®" is a registered trademark of BrainGamz, Inc.