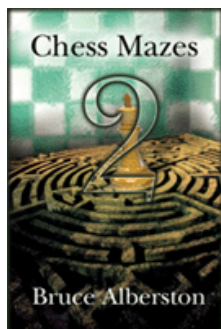




COLUMNISTS

Chess Mazes

Bruce Alberston

[\[Find us on Facebook.\]](#)

Chess Mazes

There are two types of chess mazes: *checking* and *mating*. For bishop, rook, and knight mazes the play is to **check** the black king. For queen, pawn, and king mazes the object is to **checkmate** the enemy king; here checks are not allowed.

The rules in common for each type of maze are as follows:

1. Black never moves.
2. Only the maze piece (in the case of pawns—the maze units) may move.
3. A maze piece may never move to a square commanded by enemy forces.
4. A maze piece may capture undefended enemy forces.
5. Plus we look for the shortest solution.

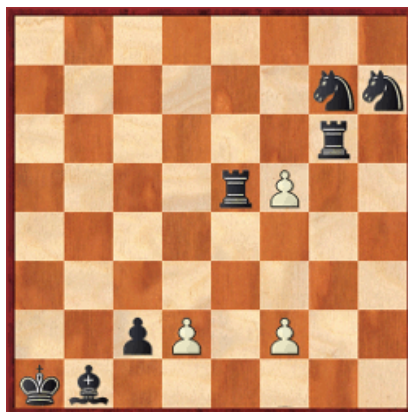
Helpers in queen and king mazes are frozen to the diagram position, unable to move or be removed. In pawn mazes promoted pawns are unable to move off their promotion squares. Also move order may be juggled without harm to the solution. Often, when running up the board to promote, pawns can advance in different sequences.

For those who may be interested in a more detailed introduction and overview to [chess maze puzzles](#), we invite you to read more; otherwise, we hope you enjoy this week's *Chess Maze* ...

A Pawn Maze

"Which white pawn does not queen? And which file doesn't it queen on?"
These are not questions you get asked every day?

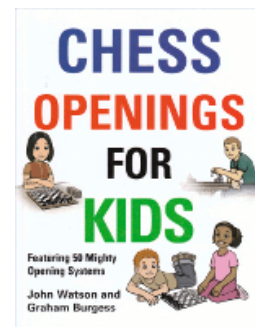
#293a



[FEN "8/6nn/6r1/4rP2/8/8/2pP1P2/kb6"]

[Scroll down for the solution](#)

Purchases from our [chess shop](#) help keep [ChessCafe.com](#) freely accessible:

[Chess Openings for Kids](#)by John Watson
& Graham Burgess[What Grandmasters Don't](#)[See, Vol. 2](#)

by Maurice Ashley

[Chess Expertise: Mastering](#)[Strategy](#)

by Efstratios Grivas



1 fxg6 2 gxh7 3 h8/Q 4 d4 5 dxe5 6 e6 7 e7 8 f4 9 f5 10 f6 11 fxg7 12 g8/Q#

#293b



[FEN "6QQ/4P3/8/8/8/8/2p5/kb6"]

© 2011 Bruce Alberston. All Rights Reserved.

Comment on this week's Chess Maze via our [Contact Page](#).

 [TOP OF PAGE](#)

 [HOME](#)

 [COLUMNS](#)

 [LINKS](#)

 [ARCHIVES](#)

 [ABOUT THE
CHESS CAFE](#)

[\[ChessCafe Home Page\]](#) [\[Book Review\]](#) [\[Columnists\]](#)
[\[Endgame Study\]](#) [\[The Skittles Room\]](#) [\[ChessCafe Archives\]](#)
[\[ChessCafe Links\]](#) [\[Online Bookstore\]](#) [\[About ChessCafe.com\]](#)
[\[Contact ChessCafe.com\]](#)

© 2011 BrainGamz, Inc. All Rights Reserved.
"ChessCafe.com®" is a registered trademark of BrainGamz, Inc.