



COLUMNISTS

Chess Mazes

Bruce Alberston

[\[Find us on Facebook.\]](#)

Chess Mazes

There are two types of chess mazes: *checking* and *mating*. For bishop, rook, and knight mazes the play is to **check** the black king. For queen, pawn, and king mazes the object is to **checkmate** the enemy king; here checks are not allowed.

The rules in common for each type of maze are as follows:

1. Black never moves.
2. Only the maze piece (in the case of pawns—the maze units) may move.
3. A maze piece may never move to a square commanded by enemy forces.
4. A maze piece may capture undefended enemy forces.
5. Plus we look for the shortest solution.

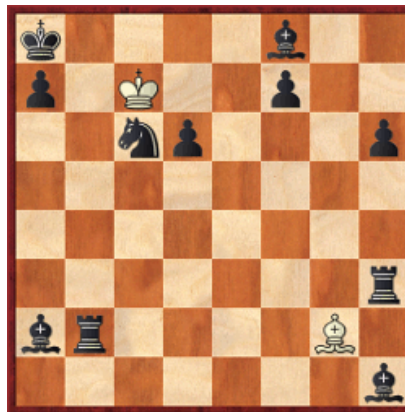
Helpers in queen and king mazes are frozen to the diagram position, unable to move or be removed. In pawn mazes promoted pawns are unable to move off their promotion squares. Also move order may be juggled without harm to the solution. Often, when running up the board to promote, pawns can advance in different sequences.

For those who may be interested in a more detailed introduction and overview to [chess maze puzzles](#), we invite you to read more; otherwise, we hope you enjoy this week's *Chess Maze* ...

A King Maze

The king's job is to clear out anything that interferes with the bishop mate. So all the black pieces come off, plus one black pawn.

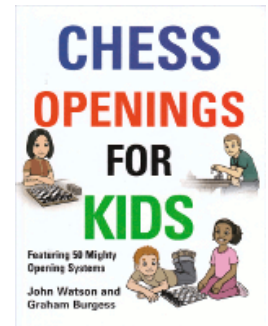
#294a



[FEN "k4b2/p1K2p2/2np3p/8/7r/br4B1/7b"]

[Scroll down for the solution](#)

Purchases from our [chess shop](#) help keep [ChessCafe.com](#) freely accessible:

[Chess Openings for Kids](#)

by John Watson
& Graham Burgess

[ChessBase Magazine 142](#)

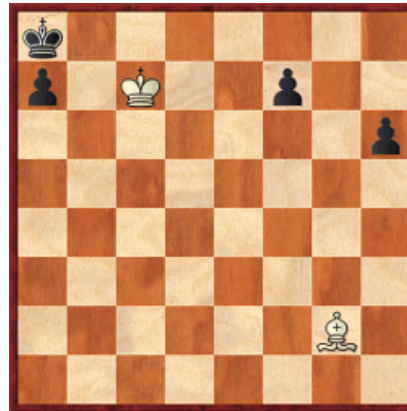
by Rainer Knaak

[What Grandmasters Don't](#)[See, Vol. 2](#)

by Maurice Ashley

1 Kd7 2 Ke8 3 Kxf8 4 Kg7 5 Kf6 6 Kf5 7 Kg4 8 Kxh3 9 Kh2 10 Kxh1 11 Kg1 12 Kf1 13 Ke1 14 Kd1 15 Kc1 16 Kxb2 17 Kxa2 18 Kb3 19 Kc4 20 Kd5 21 Kxd6 22 Kxc6 23 Kc7#

#294b



[FEN "k7/p1K2p2/7p/8/8/6B1/8"]

© 2011 Bruce Alberston. All Rights Reserved.

Comment on this week's Chess Maze via our [Contact Page](#).

 [TOP OF PAGE](#)

 [HOME](#)

 [COLUMNS](#)

 [LINKS](#)

 [ARCHIVES](#)

 [ABOUT THE CHESS CAFE](#)

[\[ChessCafe Home Page\]](#) [\[Book Review\]](#) [\[Columnists\]](#)
[\[Endgame Study\]](#) [\[The Skittles Room\]](#) [\[ChessCafe Archives\]](#)
[\[ChessCafe Links\]](#) [\[Online Bookstore\]](#) [\[About ChessCafe.com\]](#)
[\[Contact ChessCafe.com\]](#)

© 2011 BrainGamz, Inc. All Rights Reserved.
"ChessCafe.com®" is a registered trademark of BrainGamz, Inc.