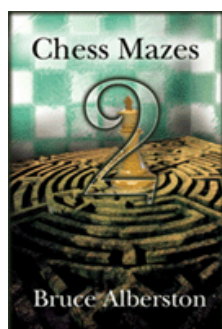




COLUMNISTS

Chess Mazes

Bruce Alberston



Chess Mazes

There are two types of chess mazes: *checking* and *mating*. For bishop, rook, and knight mazes the play is to **check** the black king. For queen, pawn, and king mazes the object is to **checkmate** the enemy king; here checks are not allowed.

The rules in common for each type of maze are as follows:

1. Black never moves.
2. Only the maze piece (in the case of pawns—the maze units) may move.
3. A maze piece may never move to a square commanded by enemy forces.
4. A maze piece may capture undefended enemy forces.
5. Plus we look for the shortest solution.

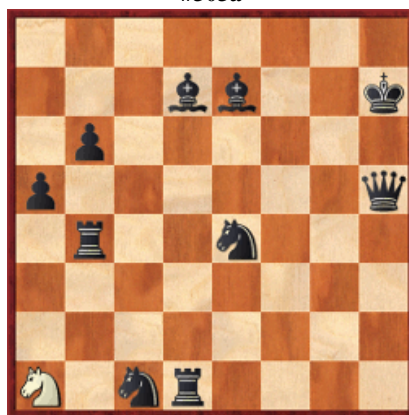
Helpers in queen and king mazes are frozen to the diagram position, unable to move or be removed. In pawn mazes promoted pawns are unable to move off their promotion squares. Also move order may be juggled without harm to the solution. Often, when running up the board to promote, pawns can advance in different sequences.

For those who may be interested in a more detailed introduction and overview to [chess maze puzzles](#), we invite you to read more; otherwise, we hope you enjoy this week's *Chess Maze* ...

A Knight Maze

Hint – save the d7-bishop for last. For then you're only one square away from check. We're assuming of course that the appropriate captures have already been made.

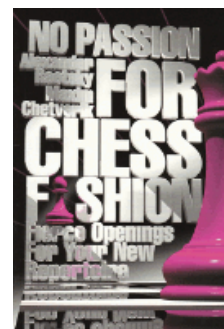
#303a



[FEN "8/3bb2k/1p6/p6q/1r2n3/8/8/N1nr4"]

[Scroll down for the solution](#)

Purchases from our [chess shop](#) help keep [ChessCafe.com](#) freely accessible:



[No Passion For Chess Fashion](#)

by Alexander Raetsky
& Maxim Chetverik



[Chess Endgames 8](#)
by Karsten Müller



[Beating the Sicilian: A Grandmaster Repertoire Vol. 2](#)
by Victor Bologan

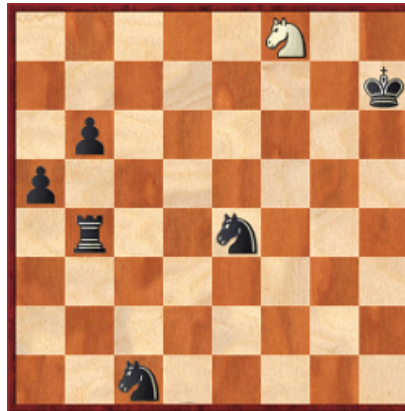
Free Shipping!
On all Orders
More than \$75!

UPS Ground
or Media Mail



Nc2 2 Ne3 3 Ng2 4 Nf4 5 Nxh5 6 Nf4 7 Ng2 8 Ne3 9 Nxd1 10 Ne3 11 Nd5
12 Nxe7 13 Nd5 14 Nc7 15 Na6 16 Nb8 17 Nxd7 18 Nf8+

#303b



[FEN "5N2/7k/1p6/p7/1r2n3/8/8/2n5"]

© 2011 Bruce Alberston. All Rights Reserved.

A PDF file of [this week's Chess Maze](#), along with all previous Chess Mazes,
is available in the [ChessCafe.com Archives](#).

Comment on this week's Chess Maze via our [Contact Page](#).

 [TOP OF PAGE](#)

 [HOME](#)

 [COLUMNS](#)

 [LINKS](#)

 [ARCHIVES](#)

 [ABOUT THE
CHESS CAFE](#)

[\[ChessCafe Home Page\]](#) [\[Book Review\]](#) [\[Columnists\]](#)
[\[Endgame Study\]](#) [\[The Skittles Room\]](#) [\[ChessCafe Archives\]](#)
[\[ChessCafe Links\]](#) [\[Online Bookstore\]](#) [\[About ChessCafe.com\]](#)
[\[Contact ChessCafe.com\]](#)

© 2011 BrainGamz, Inc. All Rights Reserved.
"ChessCafe.com®" is a registered trademark of BrainGamz, Inc.