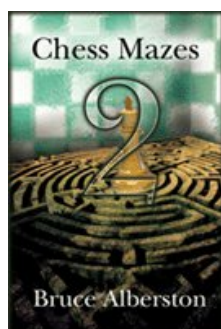




COLUMNISTS

Chess Mazes

Bruce Alberston



Chess Mazes

There are two types of chess mazes: *checking* and *mating*. For bishop, rook, and knight mazes the play is to **check** the black king. For queen, pawn, and king mazes the object is to **checkmate** the enemy king; here checks are not allowed.

The rules in common for each type of maze are as follows:

1. Black never moves.
2. Only the maze piece (in the case of pawns – the maze units) may move.
3. A maze piece may never move to a square commanded by enemy forces.
4. A maze piece may capture undefended enemy forces.
5. Plus we look for the shortest solution.

Helpers in queen and king mazes are frozen to the diagram position, unable to move or be removed. In pawn mazes promoted pawns are unable to move off their promotion squares. Also move order may be juggled without harm to the solution. Often, when running up the board to promote, pawns can advance in different sequences.

For those who may be interested in a more detailed introduction and overview to [chess maze puzzles](#), we invite you to read more; otherwise, we hope you enjoy this week's *Chess Maze* ...

A King Maze

Just a case of the white king stepping carefully, to avoid walking into check. At the end he still has to step carefully, to give mate.

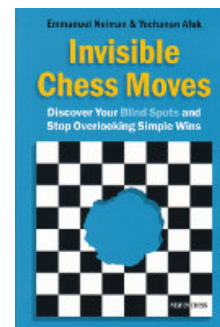
#306a



[FEN "B7/B4n2/8/1p1b2Q1/8/1r3k2/Kn6/2N5"]

[Scroll down for the solution](#)

Purchases from our [chess shop](#) help keep [ChessCafe.com](#) freely accessible:



Invisible Chess Moves
by Yochanan Afek
& Emmanuel Neiman



Houdini 2 Standard
by Robert Houdart



Play the Benko Gambit
by Nicolai Pedersen

1 Kb1 2 Kc2 3 Kd2 4 Ke1 5 Kf1 6 Kg1 7 Kh2 8 Kh3 9 Kh4 10 Kh5 11 Kg6
12 Kf6 13 Ke7 14 Kd7 15 Kc7 16 Kb6 17 Kc5 18 Kxd5 19 Ke6#

#306b



[FEN "B7/B4n2/4K3/1p4Q1/8/1r3k2/1n6/2N5"]

© 2011 Bruce Alberston. All Rights Reserved.

A PDF file of [this week's Chess Maze](#), along with all previous Chess Mazes, is available in the [ChessCafe.com Archives](#).

Comment on this week's Chess Maze via our [Contact Page](#).

 [TOP OF PAGE](#)

 [HOME](#)

 [COLUMNS](#)

 [LINKS](#)

 [ARCHIVES](#)

 [ABOUT THE CHESS CAFE](#)

[\[ChessCafe Home Page\]](#) [\[Book Review\]](#) [\[Columnists\]](#)
[\[Endgame Study\]](#) [\[The Skittles Room\]](#) [\[ChessCafe Archives\]](#)
[\[ChessCafe Links\]](#) [\[Online Bookstore\]](#) [\[About ChessCafe.com\]](#)
[\[Contact ChessCafe.com\]](#)

© 2011 BrainGamz, Inc. All Rights Reserved.
"ChessCafe.com®" is a registered trademark of BrainGamz, Inc.