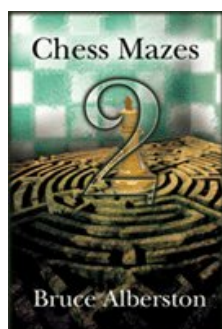




COLUMNISTS

Chess Mazes

Bruce Alberston



Chess Mazes

There are two types of chess mazes: *checking* and *mating*. For bishop, rook, and knight mazes the play is to **check** the black king. For queen, pawn, and king mazes the object is to **checkmate** the enemy king; here checks are not allowed.

The rules in common for each type of maze are as follows:

1. Black never moves.
2. Only the maze piece (in the case of pawns – the maze units) may move.
3. A maze piece may never move to a square where it can be captured by enemy forces.
4. A maze piece may capture undefended enemy forces.
5. Plus we look for the shortest solution.

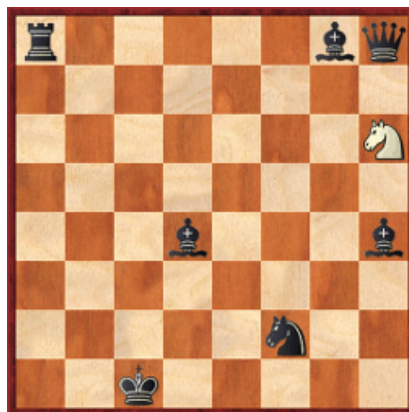
Helpers in queen and king mazes are frozen to the diagram position, unable to move or be removed. In pawn mazes promoted pawns are unable to move off their promotion squares. Also move order may be juggled without harm to the solution. Often, when running up the board to promote, pawns can advance in different sequences.

For those who may be interested in a more detailed introduction and overview to [chess maze puzzles](#), we invite you to read more; otherwise, we hope you enjoy this week's *Chess Maze* ...

A Knight Maze

December 24th is Lasker's birthday, also Teichmann's: 1868. None of this has anything to do with our Knight Maze. Just stuff you should know.

#321a



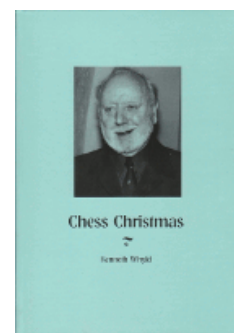
[FEN "r5bq/8/7N/8/3b3b/8/5n2/2k5"]

[Scroll down for the solution](#)

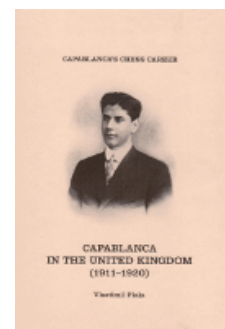
Purchases from our [chess shop](#) help keep [ChessCafe.com](#) freely accessible:



[Chess Adventures of Baron Munchausen](#)
by Amatzia Avni



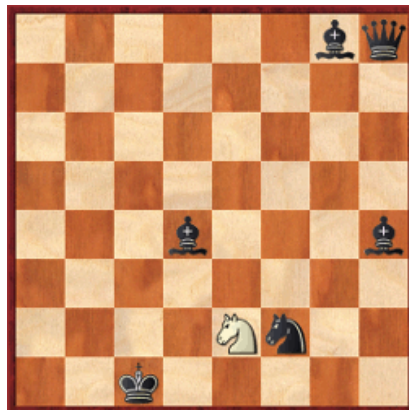
[Chess Christmas](#)
by Ken Whyld



[Capablanca's Chess Career](#)
by Vlastimil Fiala

1 Nf5 2 Nd6 3 Nb5 4 Nc7 5 Nxa8 6 Nc7 7 Na6 8 Nb8 9 Nd7 10 Nf8 11 Ng6
12 Nf4 13 Ne2+

#321b



[FEN "6bq/8/8/8/3b3b/8/4Nn2/2k5"]

© 2011 Bruce Alberston. All Rights Reserved.

A PDF file of [this week's Chess Maze](#), along with all previous Chess Mazes, is available in the [ChessCafe.com Archives](#).

Comment on this week's Chess Maze via our [Contact Page](#).



[\[ChessCafe Home Page\]](#) [\[Book Review\]](#) [\[Columnists\]](#)
[\[Endgame Study\]](#) [\[The Skittles Room\]](#) [\[ChessCafe Archives\]](#)
[\[ChessCafe Links\]](#) [\[Online Bookstore\]](#) [\[About ChessCafe.com\]](#)
[\[Contact ChessCafe.com\]](#)

© 2011 BrainGamz, Inc. All Rights Reserved.
"ChessCafe.com"® is a registered trademark of BrainGamz, Inc.