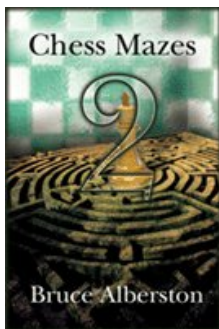




## COLUMNISTS

## Chess Mazes

Bruce Alberston



# Chess Mazes

There are two types of chess mazes: *checking* and *mating*. For bishop, rook, and knight mazes the play is to **check** the black king. For queen, pawn, and king mazes the object is to **checkmate** the enemy king; here checks are not allowed.

The rules in common for each type of maze are as follows:

1. Black never moves.
2. Only the maze piece (in the case of pawns – the maze units) may move.
3. A maze piece may never move to a square where it can be captured by enemy forces.
4. A maze piece may capture undefended enemy forces.
5. Plus we look for the shortest solution.

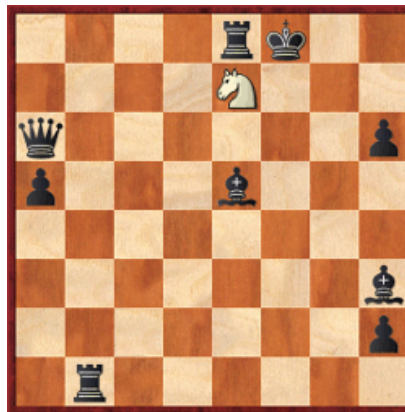
Helpers in queen and king mazes are frozen to the diagram position, unable to move or be removed. In pawn mazes promoted pawns are unable to move off their promotion squares. Also move order may be juggled without harm to the solution. Often, when running up the board to promote, pawns can advance in different sequences.

For those who may be interested in a more detailed introduction and overview to [chess maze puzzles](#), we invite you to read more; otherwise, we hope you enjoy this week's *Chess Maze* ...

## A Knight Maze

How many undefended pieces must the knight take? Coming up with the right number should lead you to the shortest solution.

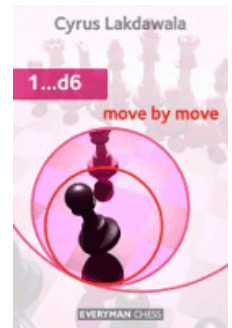
**#327a**



[FEN "4rk2/4N3/q6p/p3b3/8/7b/7p/1r6"]

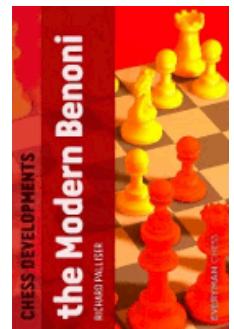
**Scroll down for the solution**

**Purchases from our [chess shop](#) help keep ChessCafe.com freely accessible:**



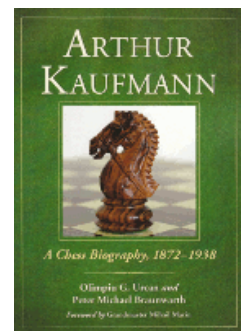
1...d6: Move by Move  
(Ebook)

by Cyrus Lakdawala



Chess Developments:  
Modern Benoni (Ebook)

by Richard Palliser

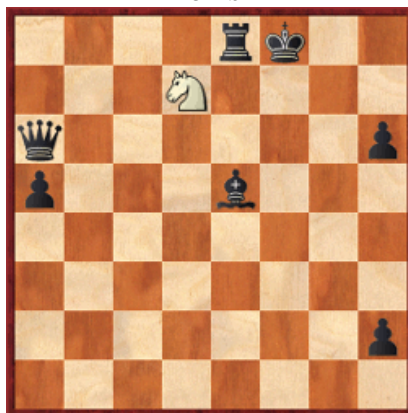


Arthur Kaufmann

by Olimpiu G. Urcan  
& Peter Michael Braunwarth

1 Nd5 2 Ne3 3 Nc2 4 Na3 5 Nxb1 6 Nd2 7 Ne4 8 Nf2 9 Nxh3 10 Nf2 11 Ne4  
12 Nc5 13 Nd7+

#327b



[FEN "4rk2/3N4/q6p/p3b3/8/8/7p/8"]

---

© 2012 Bruce Alberston. All Rights Reserved.

---

A PDF file of [this week's Chess Maze](#), along with all previous Chess Mazes,  
is available in the [ChessCafe.com Archives](#).

---

Comment on this week's Chess Maze via our [Contact Page](#).

---

 [TOP OF PAGE](#)

 [HOME](#)

 [COLUMNS](#)

 [LINKS](#)

 [ARCHIVES](#)

 [ABOUT THE  
CHESS CAFE](#)

[\[ChessCafe Home Page\]](#) [\[Book Review\]](#) [\[Columnists\]](#)  
[\[Endgame Study\]](#) [\[The Skittles Room\]](#) [\[ChessCafe Archives\]](#)  
[\[ChessCafe Links\]](#) [\[Online Bookstore\]](#) [\[About ChessCafe.com\]](#)  
[\[Contact ChessCafe.com\]](#)

© 2012 BrainGamz, Inc. All Rights Reserved.  
"ChessCafe.com®" is a registered trademark of BrainGamz, Inc.