



COLUMNISTS

Chess Mazes

Bruce Alberston



Chess Mazes

There are two types of chess mazes: *checking* and *mating*. For bishop, rook, and knight mazes the play is to **check** the black king. For queen, pawn, and king mazes the object is to **checkmate** the enemy king; here checks are not allowed.

The rules in common for each type of maze are as follows:

1. Black never moves.
2. Only the maze piece (in the case of pawns – the maze units) may move.
3. A maze piece may never move to a square where it can be captured by enemy forces.
4. A maze piece may capture undefended enemy forces.
5. Plus we look for the shortest solution.

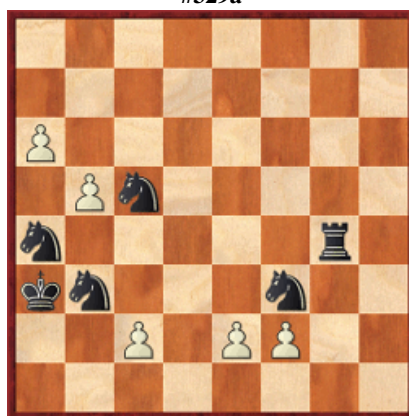
Helpers in queen and king mazes are frozen to the diagram position, unable to move or be removed. In pawn mazes promoted pawns are unable to move off their promotion squares. Also move order may be juggled without harm to the solution. Often, when running up the board to promote, pawns can advance in different sequences.

For those who may be interested in a more detailed introduction and overview to [chess maze puzzles](#), we invite you to read more; otherwise, we hope you enjoy this week's *Chess Maze* ...

A Pawn Maze

We made all promotions to queens, but underpromotion is also possible.

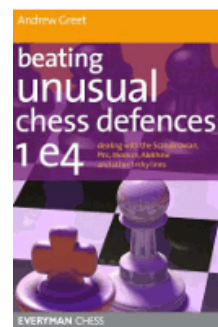
#329a



[FEN "8/8/P7/1Pn5/n5r1/kn3n2/2P1PP2/8"]

[Scroll down for the solution](#)

Purchases from our [chess shop](#) help keep [ChessCafe.com](#) freely accessible:



[Beating Unusual Chess Defences: 1 e4](#)
by Andrew Greet



[Giants of Innovation](#)
by Craig Pritchett

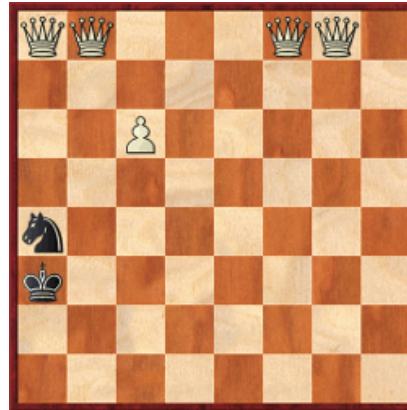


[ChessBase Magazine 146](#)
by ChessBase

1 a7 2 a8/Q 3 exf3 4 fxg4 5 g5 6 g6 7 g7 8 g8/Q 9 f4 10 f5 11 f6 12 f7 13 f8/
Q 14 b6 15 b7 16 b8/Q 17 cxb3 18 b4 19 bxc5 20 c6#

You can also make rooks at a8 and b8. We did too, then turned them upside down.

#329b



[FEN "QQ3QQ/8/2P5/8/n7/k7/8/8"]

© 2012 Bruce Alberston. All Rights Reserved.

A PDF file of [this week's Chess Maze](#), along with all previous Chess Mazes, is available in the [ChessCafe.com Archives](#).

Comment on this week's Chess Maze via our [Contact Page](#).

 [TOP OF PAGE](#)

 [HOME](#)

 [COLUMNS](#)

 [LINKS](#)

 [ARCHIVES](#)

 [ABOUT THE
CHESS CAFE](#)

[\[ChessCafe Home Page\]](#) [\[Book Review\]](#) [\[Columnists\]](#)
[\[Endgame Study\]](#) [\[The Skittles Room\]](#) [\[ChessCafe Archives\]](#)
[\[ChessCafe Links\]](#) [\[Online Bookstore\]](#) [\[About ChessCafe.com\]](#)
[\[Contact ChessCafe.com\]](#)

© 2012 BrainGamz, Inc. All Rights Reserved.
"ChessCafe.com®" is a registered trademark of BrainGamz, Inc.