



## Bishop vs Pawns

### Part 2

I continue the Bishop vs Pawns debate started last month (for the first part see the [ChessCafe.com Archives](#)):

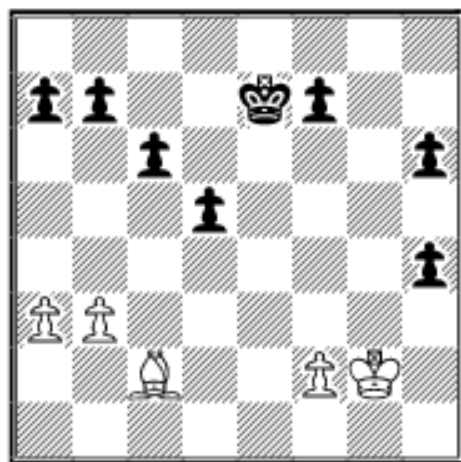
#### D) Pawns on Both Wings

With a lot of pawns still on the board matters can become quite complicated:

#### COLUMNISTS

### Endgame Corner

Karsten Müller



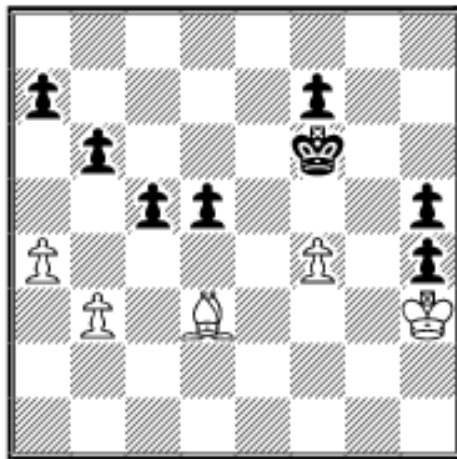
**14.01 G.Hertneck - K.Müller**  
**Austrian Staatsliga 2001,**  
**Mozart Salzburg-Gleisdorf,**  
**1st board**

Shortly before the time control  
I made a big mistake: **40...Kf6?**  
40...Kd6! was called for:

41.Kh3 Ke5 42.Kxh4 c5 43.a4  
(43.Kh5 b5 44.Kxh6 c4 45.Kg7

d4 46.bxc4 bxc4 47.Kxf7 d3 48.Bb1 Kd4 49.f4 c3—+)  
43...Kd4 44.Kh5 (44.Bd1 c4 45.bxc4 dxc4 46.Kh5 Kd3  
47.Bg4 c3 48.Bf5+ Kd2 49.Kxh6 c2 50.Bxc2 Kxc2 51.f4  
Kd3—+) 44...Kc3 45.Bd1 c4 46.bxc4 dxc4 47.Bf3 b6  
48.Bd5 f6 49.Kxh6 a6 50.Kg6 b5 51.axb5 axb5 52.Be4  
Kd2 53.Kxf6 c3—+ **41.f4!** Now Black's king is severely  
restricted and I had to fight hard to get a draw: **41...c5**  
**42.Bd3 Ke6 43.a4 b6 44.Kf3 h5 45.Kg2 Kf6 46.Kh3**





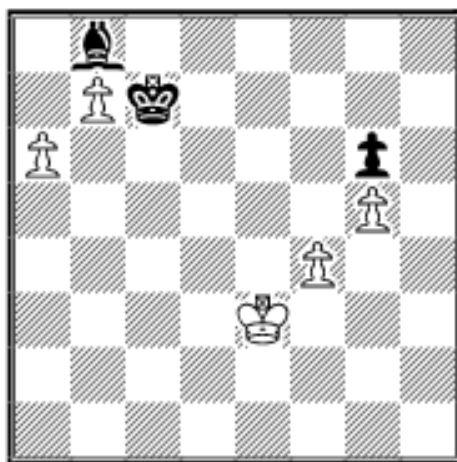
**46...c4!** I want to exchange as many pawns as possible, especially White's very valuable f-pawn. After 46...Kg7? White will use zugzwang to force Black back step by step, e.g., 47.Kxh4 Kh6 48.f5 f6 49.Be2 Kg7 50.Kxh5 d4 51.Bf1 Kh7 52.Kg4 Kh6 53.Kf3 Kg5 54.Ke4 Kg4

55.Bd3 a5 56.Kd5 Kf4 57.Ke6 Ke3 58.Bc4+- **47.bxc4 dxc4 48.Be4** 48.Bxc4 Kf5 49.Bxf7 Kxf4 50.Bc4 Ke5 51.Kxh4 Kd4 52.Bb5 Kc5 53.Kxh5 Kb4 54.Kg4 a6 55.Be8 b5= **48...a6 49.Kxh4 b5 50.axb5** After 50.a5?? b4 it is White who is losing:

**A)** 51.Bd5 c3 52.Bb3 Kf5 53.Kg3 h4+ 54.Kf3 h3 55.Bc2+ (55.Kg3 f6 56.Bc2+ Ke6 57.Kxh3 Kd5—+) 55...Ke6 56.Bb3+ Kd6 57.Kg3 Kc5 58.Kxh3 Kd4—+

**B)** 51.Kxh5 Ke6 52.Kg4 b3 53.Kf3 f5 54.Bb1 c3—+

**50...axb5 51.Kxh5 b4 52.Kg4 Ke6 53.Kf3 b3 54.Ke3 c3 55.Kd3 c2 56.Kd2 Kf6 57.Bd5 Kf5 58.Bxf7 Kxf4 1/2–1/2**

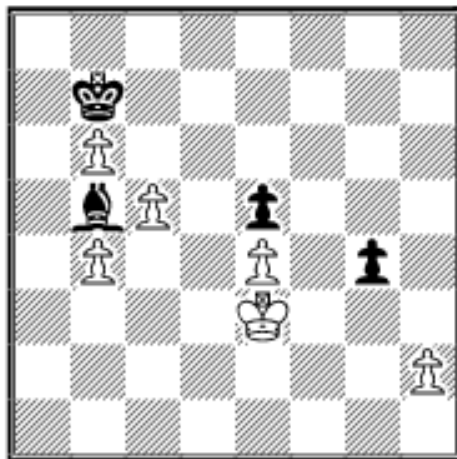


**14.02 H.Ilieva (2190) - E.Djingarova (2235) ch-BUL Women Plovdiv 2001**

White can't win despite her mighty connected passed pawns on the queenside: **58...Kd6 59.Kd4 Ba7+ 60.Ke4** 60.Kc4 isn't sufficient to win either: 60...Ke6! 61.Kb5 Kd5 and now

not 62.b8Q? Bxb8 63.Kb6 (63.f5 gxf5 64.Kb6 Bf4—+)

63...Bxf4! (avoiding the trap 63...Ke4?? 64.Kb7+-) 64.a7 Be3+-+ but 62.f5 gxf5 63.g6 Ke6 64.Kc6 f4 65.Kc7 f3 66.b8Q Bxb8+ 67.Kxb8 f2 68.g7 Kf7= **60...Ke6 61.Kf3 Kf5 62.Kg3 Bb8 63.Kf3 Ke6 64.Ke4** After 64.Kg4 Black has the defence 64...Ba7 65.f5+ gxf5+ 66.Kh5 f4! (66...Kf7? 67.g6+ Kg7 68.Kg5 f4 69.Kxf4 Kxg6 70.Ke5 Kf7 71.Kd6 Ke8 72.Kc7+-) 67.g6 f3 68.Kh6 f2 69.g7 f1Q 70.g8Q+ Ke7 71.Qh7+ Qf7= **64...Ba7 65.Kf3 Kf5** ½-½

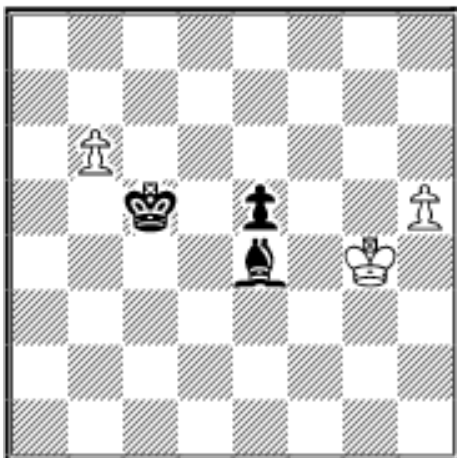


**14.03 C.Aarefjord - H.Nordahl (2272) Open NOR-ch Oslo 2001**

Black can win the e4-pawn but not the game: **53...Kc6**

53...Bc6!? 54.Kd3 Ka6 55.Kc4 Bxe4 56.b5+ Kb7 (56...Ka5 57.b7 Bxb7 58.c6 Bc8 59.Kc5 e4 60.b6 Ka6 61.b7 Bxb7

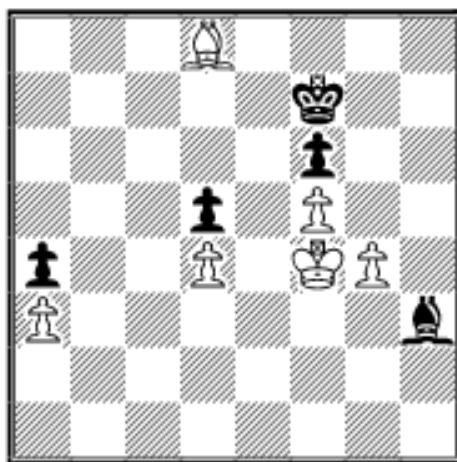
62.cxb7 Kxb7 63.Kd4 Kc6=) the active 57.Kb4? is now wrong: 57...Bd3 58.Ka5 Bf5 59.c6+ (59.Kb4 e4 60.Kc4 e3 61.Kc3 Bg6+-) 59...Kb8! 60.Ka6 Bc8+ 61.b7 Bxb7+ 62.Ka5 e4 63.Kb4 Bc8 64.b6 e3 65.Kc3 Bf5+-). After the correct 57.Kc3! Black can't make meaningful progress, e.g., 57...Bg6 58.Kd2 Be8 59.Ke3 Bxb5 60.Ke4 Kc6 61.Kxe5 Ba6 62.Kf4 Bc8 63.Kg3 Kxc5 64.b7= **54.Kf2 Bd3 55.Kg3 Bxe4 56.Kxg4 Kb5 57.h4 Kxb4 58.h5 Kxc5**



Until this moment White has defended accurately but now he blunders: **59.b7?** 59.Kg5 Kxb6 60.Kf6= **59...Bxb7 60.Kf5 Kd4** and White resigned due to **61.h6 Be4+ 62.Kf6 Bh7 63.Kg7 Bf5 64.Kf6 Ke4 65.Kg5 Bh7 66.Kf6 Kf4 67.Kg7 Bf5+-**

## E) Examples with More Pieces

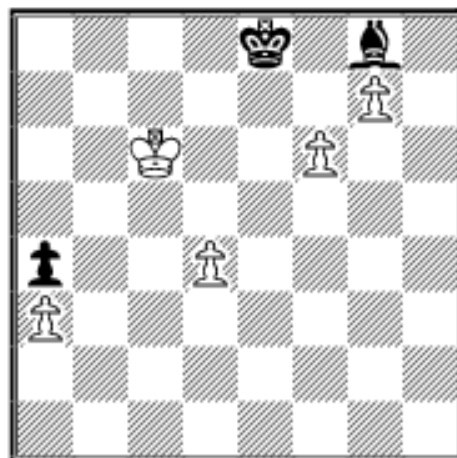
I want to end this article with three examples where the exchange into a pure bishop vs pawns ending plays a crucial role:



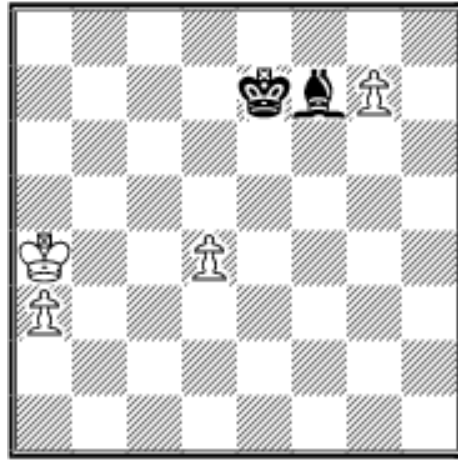
**14.04 Ye Jiangchuan (2671) - Wang Rui (2526) zt3.3 HeiBei CHN 2001**

White can't make progress by normal means so he decides to sacrifice his bishop: **50.Bxf6!? Kxf6 51.g5+ Kf7 52.Ke5 Bg2 53.Kd6 Be4 54.Ke5 Bc2 55.g6+ Ke7 56.f6+ Ke8 57.g7**

**Bh7 57...Kf7** is playable as well: **58.Kxd5 Bh7** (58...Kxf6? loses to **59.g8N+! Kf7 60.Nh6+ Ke7 61.Ng4+-) 59.Ke5 Bg8 60.d5 Ke8 61.Ke4 Kf7 62.Kf5 Bh7+ 63.Ke5 Ke8 64.Kd6 Bg8 65.Kc6 Bf7=** **58.Kxd5 Bg8+ 59.Kc6**



Now Black cracks under the pressure, but the ending remains very tricky: **59...Kd8? 59...Kf7 60.d5 Ke8!= 60.Kb5! Bb3 61.f7 Bxf7 62.Kxa4 Ke7**



The natural move is not the right one as it allows Black to set up a defence on the e8-a4 resp a8-h1 diagonal **63.Kb5?**

**63.Kb4!** was called for:

**63...Kd6** (for **63...Kf6 64.Kc5** see the game.) **64.Kb5 Kd5 65.a4 Kxd4 66.a5 Ke5 67.a6 Kf6 68.a7+- 63...Kf6?**

**63...Be8+! 64.Kb6** (64.Kb4 Kf7

**65.a4 Kxg7 66.a5 Bc6 67.Kc5 Ba8 68.d5 Kf7 69.d6 Ke8**

**70.Kb6 Kd7=) 64...Kf7 65.Kc7** (65.d5 Kxg7 66.Kc7 Kf6

**67.d6 Ke6=) 65...Kxg7 66.Kd8 Ba4 67.Ke7 Kg6 68.d5 Kf5**

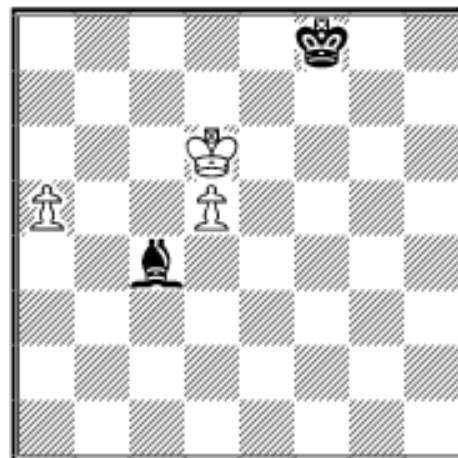
**69.d6 Ke5 70.d7 Bxd7 71.Kxd7 Kd5 72.Kc7 Kc5= 64.Kc5**

**Kxg7 65.a4 Bh5 66.Kd6** 66.a5 was possible immediately:

**66...Be2 67.d5 Kf8 68.Kb6 Ke7 69.Kc7 Bb5 70.d6+ Ke6**

**71.a6+- 66...Kf8 67.a5 Be2 67...Ke8 68.a6 Bf3 69.d5+-**

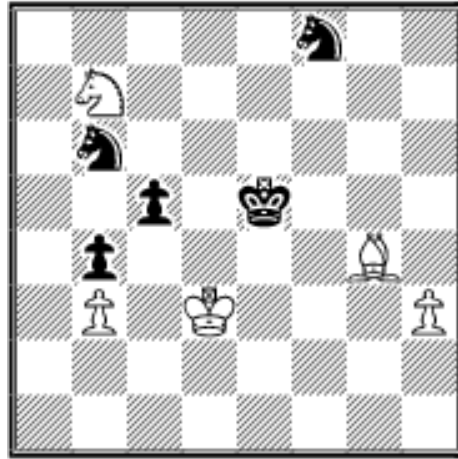
**68.d5 Bc4**



White's following finish is quite instructive: **69.Kc5!** **69.Kc6?**

**Ke7 70.d6+ Kd8= 69...Be2**

**70.Kc6 Ke7 71.Kc7 1-0**

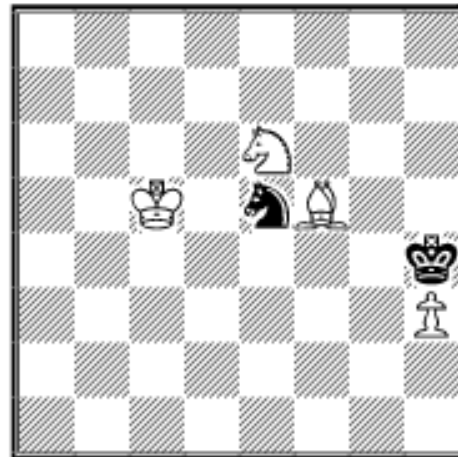


**14.05 Y.Kraidman (2322) -  
A.Luboshitz (2200) European  
Seniors Saint Vincent 2001**

White has the wrong rook's pawn but Black's task is not as easy as he thought: **51...c4+!? 52.bxc4 Nxc4?** too early. Using the b-pawn as decoy was the right way to proceed: **52...b3!**

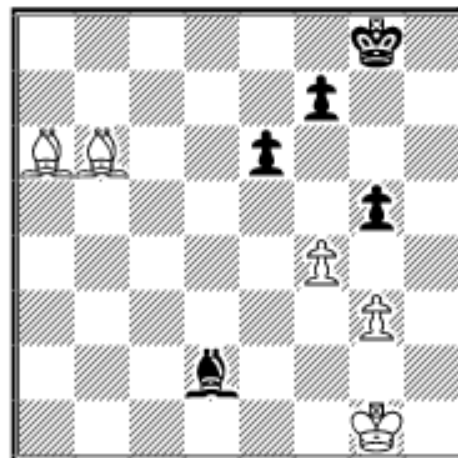
**53.c5 Nd5** and Black should be able to hold the draw.

**53.Kxc4 Ng6 54.Nc5 Kf4 55.Kxb4 Kg5 56.Ne6+ Kh4 57.Kc5 Ne5 58.Bf5**



Black can exchange knight's now but it is not sufficient to draw: **58...Nf3 58...Nf7 59.Nf8 Ng5 60.Ng6+ Kh5 61.Nf4+ Kh4 62.Ng2+ Kg3 63.h4 Nf7 64.Be4+- 59.Kd5 Ng5 60.Nxg5 Kxg5 61.Ke6 Kh6 62.Kf6 Kh5 63.Kg7 Kg5 64.Bg4 1-0**

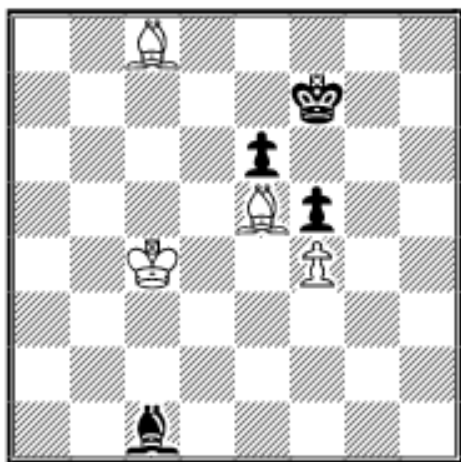
The analysis of the next example follows my article "The Fortress of Lippstadt" in CBM 73:



**14.06 K.Müller (2533) -  
I.Csom (2472) Lippstadt 1999**

I had won a bishop earlier and now thought that I could win easily. But Istvan Csom had prepared a nasty surprise: **37.fxg5? 37.Bc7? gxf4 38.gxf4 f5 39.Kf2 Kf7 40.Ke2 (40.Kg3 Be1+=) 40...Bc1 41.Kd3 Kf6**

37.f5! was called for: 37...exf5 38.Bd3 f4 39.g4 Bc3  
40.Kf2



White can't win the e6-pawn:  
 44...Ke7 45.Kc5 Ba3+ 46.Kc6  
 Bb4 47.Ba6 (47.Bg7 Bd2  
 48.Bh6 e5=) 47...Ba3 48.Kc7  
 (48.Bd3 Bb4 49.Bc4 Ba3  
 50.Bd4 Bc1 51.Bc5+ Kf6  
 52.Bd6 Bb2 53.Kd7 e5=)  
 48...Bb4 49.Bc4 Ba3 50.Kc8  
 Bb4 51.Bc7 Bc3 52.Bd8+  
 Kd6=;

**A) 40...Kg7 41.Kf3 Bb2 42.Bd8 Bf6 43.Bxf6+ Kxf6  
44.Ke4 Ke6 45.Bc4+ Kf6 46.Bd5 Ke7 47.Kf5 f6 48.Bc4 f3  
49.Ke4 f2 50.Kf3 Kd6 (50...f5 51.gxf5 Kf6 52.Kg4+-)  
51.Kxf2 Ke5 52.Bd3+-;**

**B) 40...f6 41.Kf3 Kf7 42.Ke4 Ke7 43.Bc5+ Kf7 44.Bc4+ Kg7 45.Be6 Bb2 46.Bd4 Ba3 47.Kf5 Be7 48.Bd5 Bd8 49.Ke6 Kg6 50.Be4+ Kg7 51.Kd7 Ba5 52.Ke7 Bb4+ 53.Ke6+-**

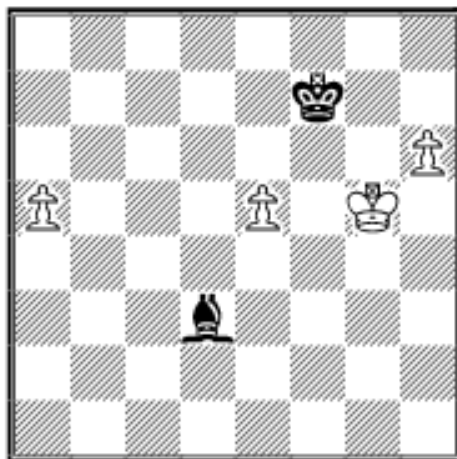
**37...Bxg5 38.Bc4 Bf6 39.Bc7 Kg7 40.Kg2 Bc3 41.Kf3 Kg6 42.Kf4 Bd2+ 43.Ke4 Bc3 44.Be5 Be1 45.Kf4 f6 46.Bd3+ Kf7 47.Bb2 Bb4 48.Kf3 Bd6 49.Bc4 f5=** and I tried to break through for some further moves before we finally agreed to the draw.

## Sources:

*Chess Endgame Lessons* Volume 2, Pal Benko 1999  
*The Ultimate Chess Puzzle Book*, John Emms, Gambit  
 2001

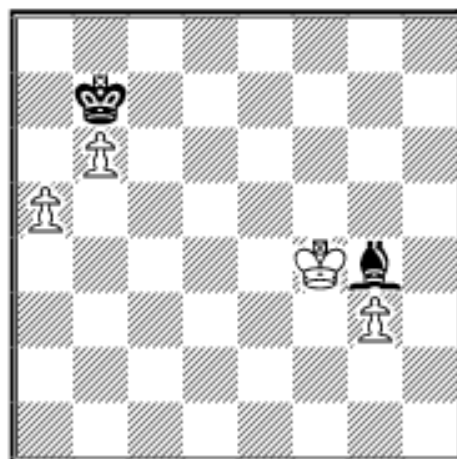
ChessBase MEGABASE 2001  
CBM 73  
The Week in Chess

**Exercises (Solutions next month)**



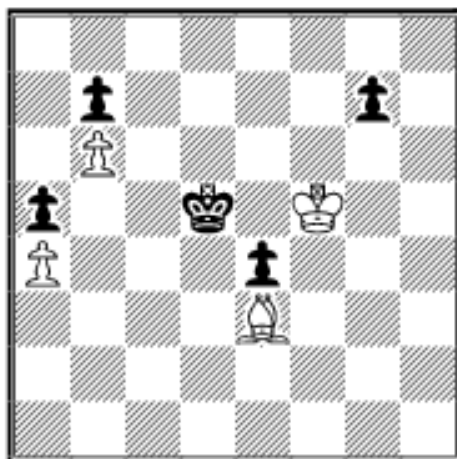
**E14.01 *J.Sunye Neto* (2375) - *D.Velimirovic* (2515) Rio de Janeiro izt 1979**

White to move and win.



**E14.02 *J.Whitehead* (2325) - *J.Tarjan* (2535) USA-ch 1983**

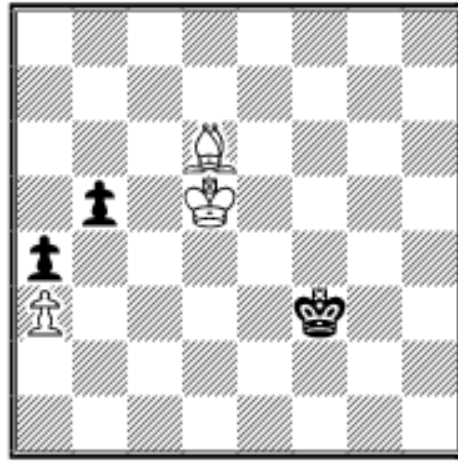
Black to move and draw.



**E14.03 *B.Spassky* (2660) - *R.Fischer* (2785) Wch28-Reykjavik 1972**

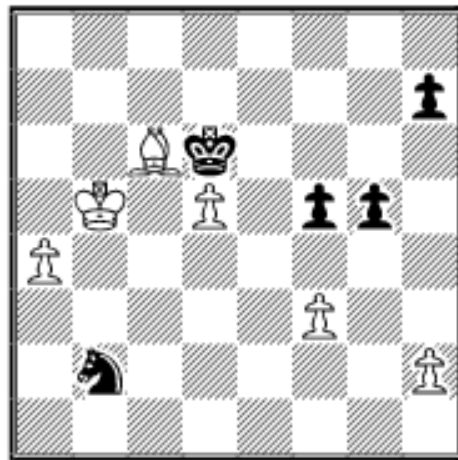
Spassky found a convincing way to victory. How did he proceed?





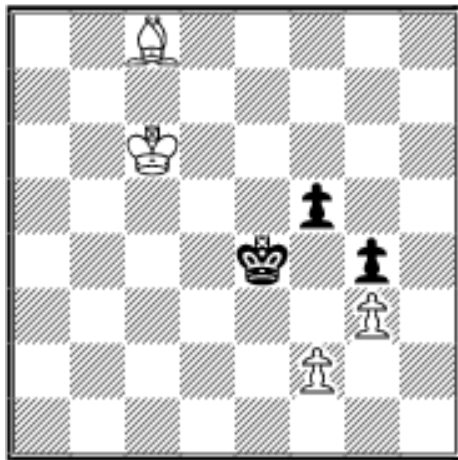
**E14.04 *V.Kortschnoj* (2665) - *A.Karpov* (2725)**

How to assess the position with Black to move? What about White to move?



**E14.05 *M.Euwe* - *M.Sultan Khan* Hastings 1931**

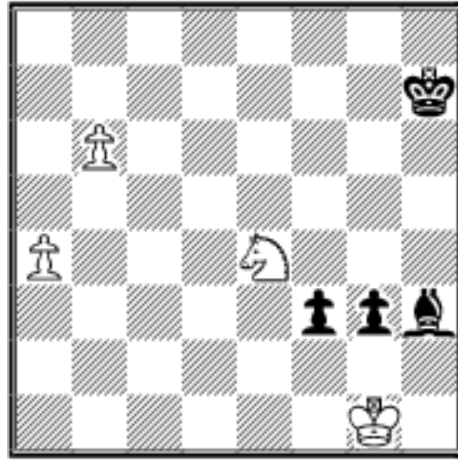
Is Black lost?



**E14.06 *M.Zwettler* - *F.Loidl* Ybbs 2002**

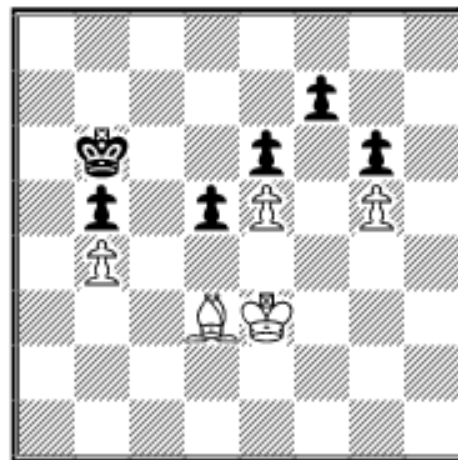
Was **67.Bxf5+** a fortunate choice?

**Solutions to last month's exercises**



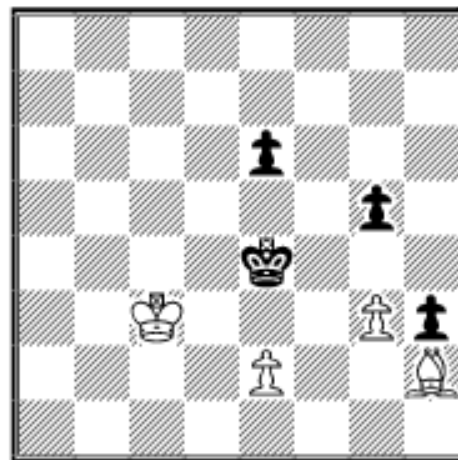
**E13.01 *L.Helm - S.Germann*  
BL9900 (Women) Germany  
2000**

White is winning: **60...f2+**  
60...Bc8 61.Nxg3 Kg6 62.Ne4  
Ba6 63.Nc5+- **61.Nxf2 gxf2+**  
**62.Kxf2 Bc8 63.Ke3 Kg6**  
**64.Kd4 Kf6 65.Kd5 Ke7**  
**66.Kc6 Kd8 67.b7 1-0**



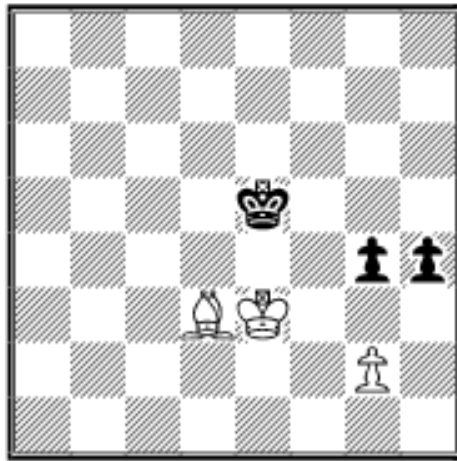
**E13.02 *D.Lam - L.Chipkin*  
(2156) ch-New York State  
Rochester 2001**

White won as follows: **45.Kd4**  
**Kc6 46.Bc2 Kb6 47.Bb3 Kc6**  
**48.Ba2 Kd7 48...Kb6 49.Bxd5**  
exd5 50.Kxd5 Kc7 51.Kc5+-  
**49.Kc5 1-0**



**E13.03 *A.Potapov (2490) -*  
*E.Pigusov (2584) RUS-ch 54th*  
Elista 2001**

Black is surprisingly winning:  
**53...Ke3! 53...g4?? 54.Bg1 h2**  
55.Bxh2 Ke3 56.Bg1+ Kxe2  
57.Bd4 Kf3 58.Be5 Ke4  
59.Bc7+- **54.g4 54.Kc4 Kxe2**  
55.Kd4 Kf3 56.g4 Kg2 57.Bd6  
h2 58.Bxh2 Kxh2 59.Ke5 Kg3+- **54...Kxe2 55.Kd4 Kf3**  
and White resigned as **56.Ke5** loses to **56...Kg2 57.Bf4**  
**gxf4 58.g5 h2 59.g6 h1Q+-**



### **E13.04 H.Shehab - T.Moudallal ch-LIB Beruit 2001**

Black to move was easy: **1...g3!** followed by h4-h3 leaves White with a wrong rook's pawn.

White to move on the other hand could have won the game, but blew it with **48.Be4??** One

way to victory was 48.Ba6 Kf5 (48...h3 49.g3 Kf5 50.Bb7 Kg5 51.Ke4 h2 52.Ke5+-) 49.Bc8+ Kg5 50.Bd7 h3 51.g3 h2 52.Bc6 Kf5 53.Kd4 Ke6 54.Bg2 Kf5 55.Kd5 Kf6 56.Ke4 Kg5 57.Ke5 Kg6 58.Kf4 Kh5 59.Kf5+- **48...g3 49.Bb7 h3 50.gxh3 Kf6 51.Kf4 g2 52.Bxg2 Kg7 1/2-1/2**

Copyright 2002 Karsten Müller. All rights reserved.

*This column is available in **ChessCafe Reader** format. Click [here](#) for more information.*



[\[The Chess Cafe Home Page\]](#) [\[Book Reviews\]](#) [\[Bulletin Board\]](#) [\[Columnists\]](#)

[\[Endgame Studies\]](#) [\[The Skittles Room\]](#) [\[Archives\]](#)

[\[Links\]](#) [\[Online Bookstore\]](#) [\[About The Chess Cafe\]](#) [\[Contact Us\]](#)

Copyright 2002 CyberCafes, LLC. All Rights Reserved.

"The Chess Cafe®" is a registered trademark of Russell Enterprises, Inc.