



C O L U M N I S T S

## Endgame Corner

Karsten Müller



## Bishops at Work (Part 1)

So far I have not dealt with same coloured bishop endings in Endgame Corner, so it is high time to do it. Important concepts in same coloured bishops endings are:

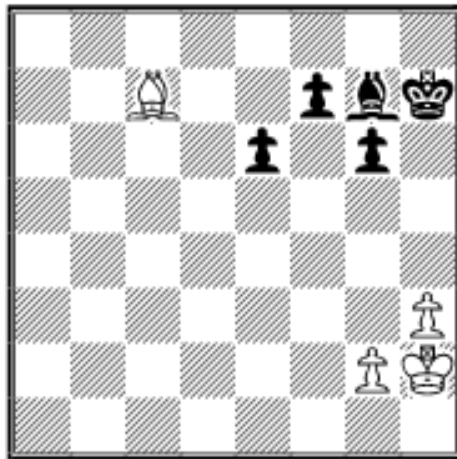
- 1) **The principle of one diagonal**, i.e. if the bishop can fulfill all its tasks on one diagonal, then it is very strong as it can be diverted and can't fall in zugzwang.
- 2) **Capablanca's rule**: Put all your pawns on the opposite colour of your bishop, so that they can't be attacked by the opponent's bishop and complement your bishop by protecting squares of the other colour to compensate the bishop's greatest weakness: its monochromacity (it can only visit 32 of the 64 squares of the board).
- 3) **Put protected pawns on the colour of your opponents bishop to restrict it** (and ideally close it out of your position altogether). This is contradictory to Capablanca's rule (see 2), but chess is no easy game. It depends on the given situation, which rule should be used. Both strategies are of course also applicable in the middlegame.
- 4) **It is difficult to dislodge a king from squares of the other colour**, if there is no check with a pawn and no zugzwang available.

I can't deal with all of these principles in detail, but I hope that my analysis of the following recent games shed some light on the problems:

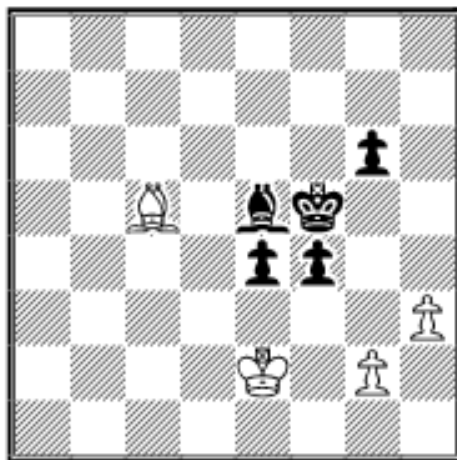
## A) A king defends his fortress

The following game is an instructive example of the strength of a defending king, which can't be dislodged:

### 19.01 *P.Blatny* (2458) - *K.Bischoff* (2541) Austrian Staatsliga 31.10.2001



44...f5 45.Kg3 e5 46.Kf3 Kg8  
47.Ke2 Kf7 48.Ba5 Ke6  
49.Bd2 e4 50.Bc1 Be5 51.Bd2  
f4 52.Bb4 Kf5 53.Bc5



White's king on e2 is holding  
the position together: **53...Bf6**

53...Kg5 54.Kf2 Kh4 55.Be7+  
g5

A) 56.Bd8? Bd4+

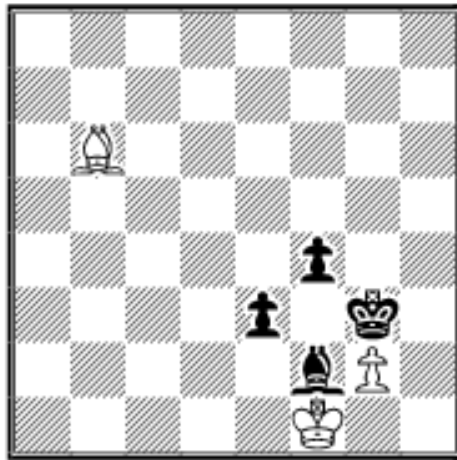
**A1)** 57.Kf1 Be3 58.Bf6  
(58.Ba5 Kg3 59.Be1+ Kh2

60.h4 g4 61.h5 g3 62.h6 f3—+) 58...f3 59.Be5 Bf4 60.Bc3  
Kg3 61.Be1+ Kh2 62.gxf3 exf3 63.Kf2 Bg3+—+

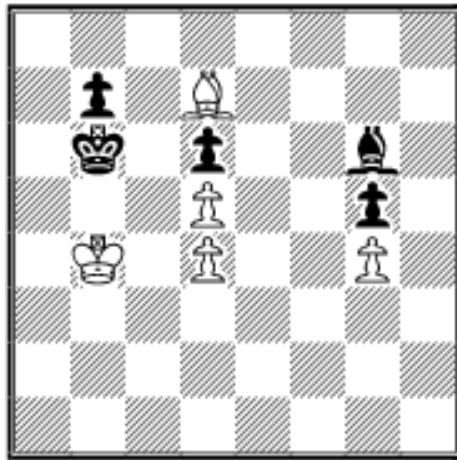
**A2)** 57.Ke2 Be3 58.Bc7 Kg3 59.Kf1 Bd2 60.Be5 (60.Bb6  
f3 61.gxf3 Kxf3—+) 60...e3 61.Bd4 e2+ 62.Kxe2 Be3  
63.Bc3 Kxg2 64.Be1 Bb6 65.h4 f3+ 66.Kd3 gxh4 67.Bxh4  
Bc7—+

**B)** 56.Bc5! the king has to stay on f2 for the time being

54.Bf2 Bc3 55.Bc5 Ba5 56.Ba7 Bb4 57.Bb6 Ke6 58.Bc7 Bd6 59.Bb6 Kd5 60.Ba7 Bc5 61.Bb8 g5 62.Bc7 Ke6 63.Bd8 Kf5 64.Ba5 Kg6 65.Bc3 Kh5 66.Ba5 Bg1 67.Bb4 Bh2 68.Ba5 Kh4 69.Be1+! Bg3 70.Bd2 Kh5 71.Bb4 Kg6 72.Bc5 Kf5 73.Bb6 g4 74.hxg4+ Kxg4 75.Bc5 Bh4 76.Bb6 Bf6 (76...Kg3 77.Bf2+ Kxg2 78.Bxh4 e3 79.Be1=) 77.Kf2 Bb2 78.Ba7 Bc1 79.Bb6 Ba3 80.Ba7 Be7 81.Bb6 Bh4+ 82.Ke2 Bg5 83.Kf2 e3+ 84.Kf1 Bh4 85.Ke2 Bf2 86.Kf1 Kg3



**87.Bc7!** the only move as 87.Ba5? e2+ 88.Kxe2 Kxg2—+ loses **87...Kg4 88.Bb6 Bh4 89.Ke2** and after a few more moves a draw was agreed.



**19.02 T.Souche (2139) - M.Santo Roman (2426) Paris-ch op 2001**

White's king on b4 keeps the enemy at bay. But he has to defend very carefully due to his weak pawns: **52.Bb5?** loses precious ground. White can hold the position with 52.Be6

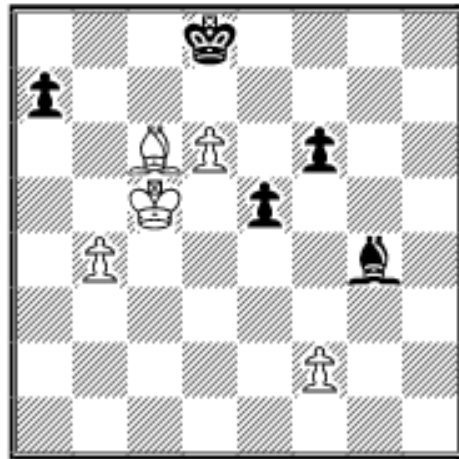
A) 52...Kc7 53.Ka5 Bd3 (53...Be8 54.Bf5 Bd7 55.Bxd7 Kxd7 56.Kb6 Kc8 57.Kb5 Kc7 58.Ka5 Kb8 59.Kb6= as 59...Ka8?? loses to 60.Kc7 b5 61.Kxd6+-) 54.Bf7 b6+ 55.Kb4 Be2 56.Be6 Ba6 57.Bf5 Bc8 58.Be6! (58.Bxc8? Kxc8 59.Kb5 Kb7 60.Ka4 Ka6 61.Kb4 b5 62.Kb3 Ka5—+)

58...Ba6= (58...Bxe6? 59.dxe6 d5 60.Kb5 Kd6 61.Kxb6 Kxe6 62.Kc6+-; 58...Bd7? 59.Bxd7 Kxd7 60.Kb5 Kc7 61.Ka6+-)

**B)** 52...Be4 53.Bg8 Bf3 54.Be6 Ka6 55.Ka4 b5+ 56.Kb4 Kb6 57.Bd7 Bxd5 58.Bxb5=

**52...Be4! 53.Kc4** (53.Bc4 Bf3—+) **53...Bd3+!** a nice shot. White probably hoped for 53...Bxd5+?? 54.Kxd5 Kxb5 55.Kxd6+- **54.Kxd3 Kxb5 55.Ke4 Kc4 56.Kf5 b5 57.Ke6 b4 58.Kxd6 b3 59.Kc7** (59.Kc6 b2 60.d6 b1Q 61.d7 Qb8—+) **59...Kxd5 0–1**

### 19.03 *Xu Jun* (2668) - *P.Nielsen* (2578) Istanbul ol (Men) 2000



The goalkeeper on d8 would have drawn this position as well: **48.b5 f5?**

Christopher Lutz showed the method to hold the draw (see his analysis in the MEGABASE 2001): 48...Be6! 49.Kb4 Bc8 50.Ka5 f5 51.Kb4 Be6 52.Kc5 f4 e.g.

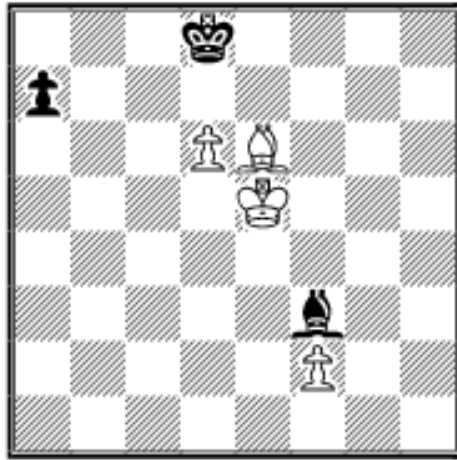
**A)** 53.Bf3 Bc8 54.Kc6 Bd7+ 55.Kd5 Bxb5 56.Kxe5 a5 57.Kxf4 a4 58.Bd1 (58.Bd5 Bd3 59.Ke5 Bb1 60.f4 a3 61.f5 a2=) 58...a3 59.Bb3 Bc6 60.Ke5 Bf3=

**B)** 53.f3 Bb3 54.Bd5 (54.Kb4 Be6 55.Ka5 Bc8 56.Be4 Ke8 57.b6 axb6+ 58.Kxb6 Kd8=) 54...Bc2 55.Kc6 e4 56.fxe4 f3 57.e5 f2 58.e6 (58.Bc4 Be4+ 59.Kc5 Bg2=) 58...f1Q 59.e7+ Ke8 60.Kc7 Qxb5 61.Bc6+ Qxc6+ 62.Kxc6 Bf5=

**49.Kd5 e4** (49...Bf3+ 50.Kxe5 Bxc6 51.bxc6 a5 52.Ke6+-)

**50.Ke5 Bh3 51.Bd5 Bg4 52.Be6 Be2 53.Kxf5 Bxb5**

(53...e3 54.fxe3 Bxb5 55.e4 Bd3 [55...a5 56.e5 a4 57.Ke4 a3 58.Kd4+/-] 56.Kf4 a5 57.Ke3 Bc2 58.e5 a4 59.Kd4 Bb1 60.Bg4+/-) **54.Kxe4 Bc6+** (54...a5 55.f4 a4 56.f5 a3 57.f6 Ke8 58.Kd4 Ba4 59.f7+ Kf8 60.Kc5 Kg7 61.Kb4 Bd7 62.Ba2+/-) **55.Ke5 Bf3**

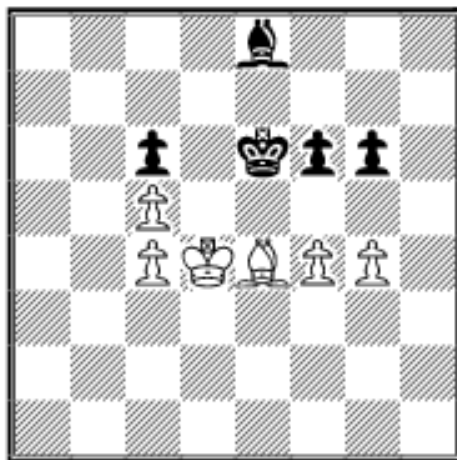


White wins the race now:

**56.Bd5 Bg4** (56...Bxd5 57.Kxd5 a5 58.f4 a4 59.f5 a3 60.f6 Ke8 61.Ke6 a2 62.f7+ Kf8 63.d7+/-) **57.f4 a5 58.f5 a4 59.f6 Ke8 60.f7+ Kf8 61.Be6 a3 62.d7 1-0**

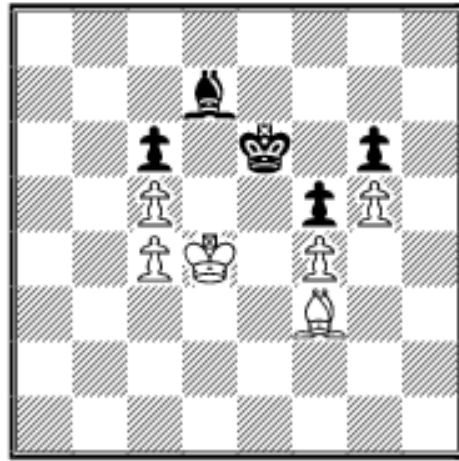
**19.04 A.Miles (2584) - L.Comas Fabrego (2516)**  
**Mondariz zt 1.1 2000**

In the next example Black tried the restriction method, but it is nevertheless very complicated as Tony Miles tried very hard to break through:



It looks like White's king and bishop have no inroad into Black's camp, but Miles finds an amazing way to create trouble: **69.g5 f5!** Normally the defender tries to exchange pawns to reduce the remaining winning potential, but in this position he has to restrict White's bishop with f5.

69...fxg5? 70.fxg5 Kf7 71.Ke5 Ke7 72.Bg2 Bd7 73.Bf3 Be8 74.Be4+/- **70.Bf3 Bd7**



**71.Bd5+!!** A fantastic shot!  
Tony Miles really had good  
technique and fighting spirit!  
**71...cxd5?**

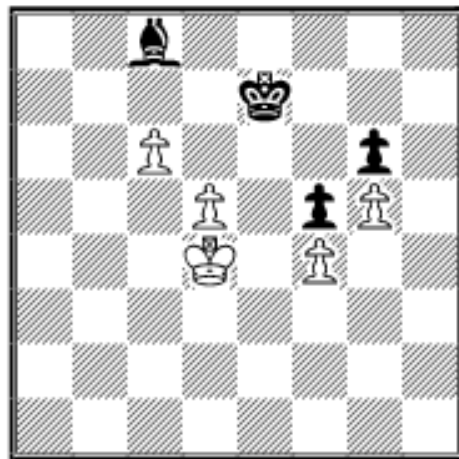
71...Ke7! was correct as  
Tsesarsky showed in CBM 79:  
72.Ke5 cxd5 73.cxd5

**A) 73...Bb5** works as well:

74.c6 Bc4 (74...Ba4? 75.d6+-) 75.d6+ Kf7 76.Kd4 Be6  
77.Kc5 Ke8=

**B) 73...Ba4** 74.c6 Bb5 75.d6+ Kd8 76.c7+ (76.Kd5 Kc8  
77.Kc5 Bd3=) 76...Kd7 77.Kf6 Ba6 78.Kxg6 Kxd6  
79.Kxf5 Kxc7 80.Kf6 Kd7 81.f5 Bd3! firing at the f-pawn  
is essential (81...Ke8? 82.Kg7+-) 82.g6 Ke8 83.g7 Bc4  
84.Kg6 Bd5 85.Kh7 Ke7=

**72.cxd5+ Ke7 73.c6 Bc8** (73...Be8 74.Ke5 Bf7 75.d6+  
Kd8 76.Kf6+-)



A critical position. White has to  
make the right choice. **74.Kc5?**

74.Ke5! was called for:  
74...Ba6 75.d6+ Kf7 76.Kd5  
Ke8 77.Ke6 Bc4+ 78.Kf6 Bb5  
79.c7 Kd7 80.Kxg6 Ba6  
81.Kxf5 Kxd6 82.g6 Kxc7  
83.Ke6 Kd8 84.Kf7 Bc4+  
85.Kf8 Kd7 86.f5+-

(Tsesarsky)

**74...Ke8!** After 74...Kd8? 75.Kb6+- Black is in a fatal  
zugzwang. **75.d6** (75.Kb6 Kd8 76.d6 Be6 77.Kb7 Bd5=)  
**75...Be6 76.Kd4** (76.d7+ Ke7 [76...Bxd7? 77.cxd7+ Kxd7

78.Kd5 Ke7 79.Ke5 Kf7 80.Kd6+-] 77.Kb6 Bxd7 78.cxd7  
Kxd7 79.Kb7 Kd6 80.Kc8 Kd5 81.Kd7 Ke4=) **76...Kf7**  
**77.Kc5** (77.Ke5 Bb3 78.d7 Ke7 79.d8Q+ Kxd8 80.Kf6  
Kc7 81.Kxg6 Kxc6 82.Kxf5 Kd7 83.Kf6 Ke8 84.g6 Kf8=)  
**77...Ke8 78.Kd4 Kf7 79.d7 Ke7 80.Kc5 Kd8 81.Kd4 Ke7**  
**82.Kc5 Kd8 83.Kd6 Bxd7 84.cxd7** stalemate 1½–1½

Sources:

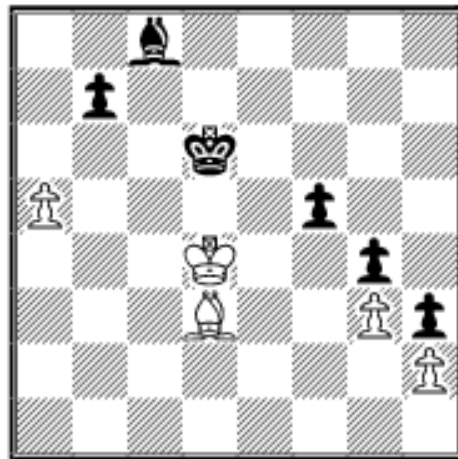
*ChessBase* MEGABASE 2001

*ChessBase Magazine* 79

*The Week in Chess*

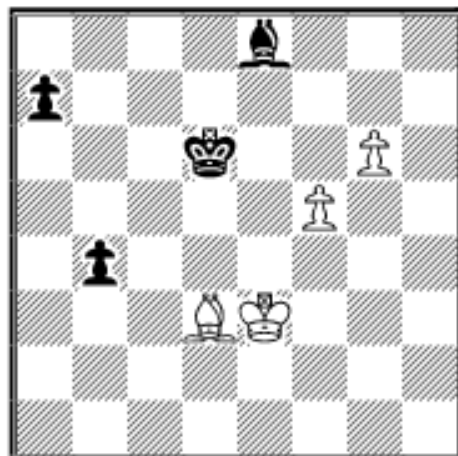
*Secrets of Chess Intuition*, Beliavsky and Mikhalchishin,  
Gambit 2002

### Exercises (Solutions next month)



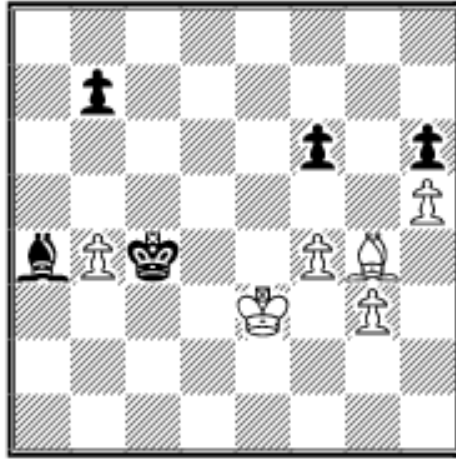
**E19.01 T,Thiel (2335) -  
K.Müller (2505) German  
Bundesliga 1997**

Can White to move save his  
skin?



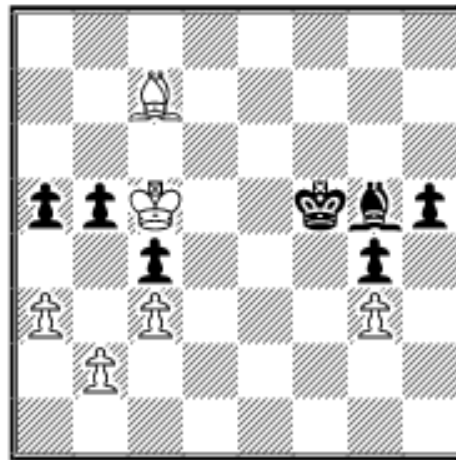
**E19.02 B.Raphael -  
H.Kennicott USA–01.New  
York 1857**

How to asses this position with  
White to move?



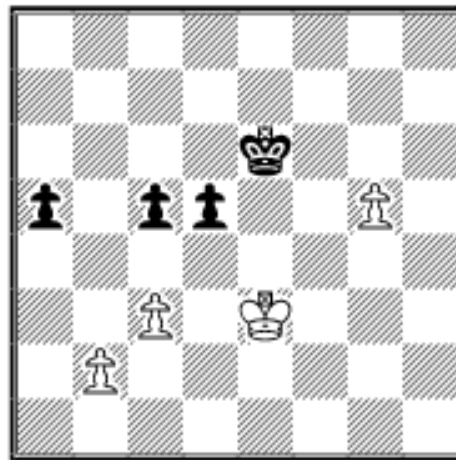
**E19.03 *E.van Haastert* (2417) - *M.Hoffmann* (2428) Dutch Team Playoffs Enschede 2002**

Who is better? (White to move.)



**E19.04 *Rogulj* - *Groszpeter Gleisdorf* 1996**

Find Black's most convincing move.

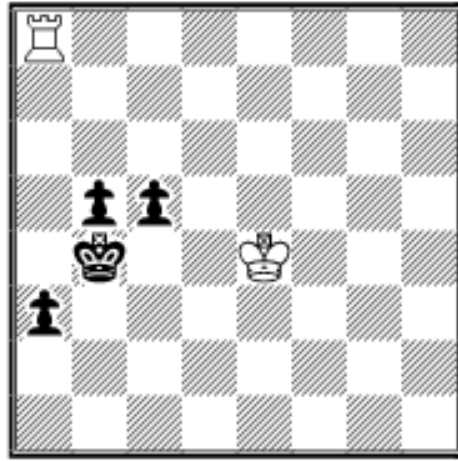


**E19.05 *Z.Ivanovic* (2232) - *M.Savic* (2184) Croatian Cup Pula 2002**

While playing through some bishop endings I found this very fascinating pawn ending. How to evaluate this position with White to move?

[Solutions to last month exercises](#)





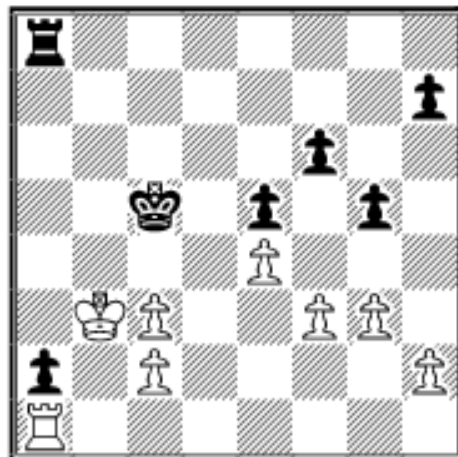
**E18.01 *J.Loifefeld* (2400) -  
*A.Illner* (2309) German  
2.Bundesliga West 2000**

White has to act very precisely:  
**65.Kd3?** now the advance c4  
follows with check!

65.Ke3! Kb3 66.Ra5 b4 (66...c4  
67.Rxb5+ Kc2 68.Ra5=;  
66...a2? 67.Kd2+-) 67.Rxc5 a2 (67...Kb2 68.Ra5 b3  
69.Kd3=) 68.Ra5 Kb2 69.Kd3 (69.Kd2? b3 70.Kd3  
a1Q-+) 69...b3 70.Kc4=

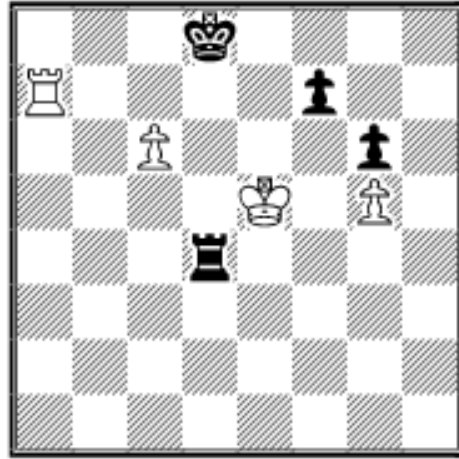
65.Ra7? is wrong as well: 65...c4 66.Kd4 Kb3 67.Rh7 c3  
68.Kd3 a2 69.Rh1 b4 70.Rf1 c2 71.Rc1 Ka3! 72.Kxc2 b3+  
73.Kd3 b2-+

**65...Kb3 66.Kd2** (66.Ra5 c4+ 67.Kd2 b4 68.Kc1 Ka2-+)  
**66...Kb2 67.Ra5 b4 68.Kd3 a2 0-1**



**E18.02 *H.Hebblinghaus* -  
*T.Heinemann* NDBMM  
Potsdam 2002**

**1.Rxa2??** was a very  
unfortunate choice: **1...Rb8+**  
**2.Ka3 Kc4 3.Ra1 Kxc3 4.Ka2**  
**Kxc2 0-1**



**E18.03 R.Polzin (2469) -  
E.Brestian (2428) Austrian  
Staatsliga 2002**

The position is astonishingly difficult: **57...Rc4?**

57...Rg4! was the right move:  
58.Kf6 (58.Rxf7 Rxc6+ 59.Kd6  
Rf5=) 58...Rf4+ 59.Ke5 Rf1=

**58.Kf6?**

58.Rxf7 leads to a won endgame with the g-pawn:

58...Rxc6 59.Rf6 Rc1 (59...Rc5+ 60.Kd6 Rf5 61.Rxg6 Ke8  
62.Ke6 Rf8 63.Rh6 Rg8 64.g6 Kf8 65.Kf6+-) 60.Rxg6 Ke7  
61.Rf6 Rc5+ 62.Kf4 Ra5 63.Kg4 Ra1 64.Kf5 Ra8 65.Kg6  
Rg8+ 66.Kh6+-

58.c7+ wins surprisingly as well:

**A)** 58...Kd7 59.c8Q+ Kxc8 60.Rxf7 Rc6 61.Re7 (61.Rf6?  
Rc5+ 62.Kf4 Rc4+ 63.Kg3 Kd7 64.Rxg6 Ke7 65.Rf6  
Ra4=) 61...Kd8 62.Re6 Rc8 63.Kf6 Kd7 64.Re7+ Kd6  
65.Re1 Rg8 66.Kf7+-

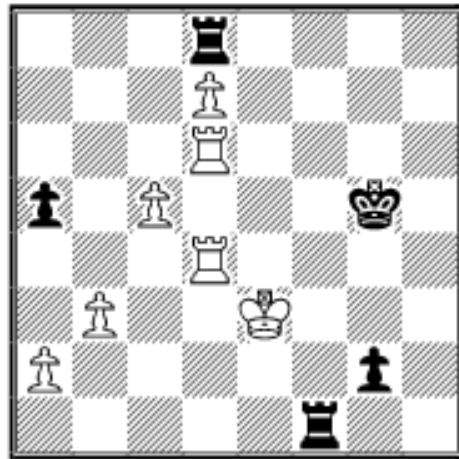
**B)** 58...Kc8 59.Kf6 Rf4+ (59...Rc5 60.Ra8+ Kxc7 61.Ra7+  
Kd8 62.Rxf7 Ke8 63.Rh7 Rc6+ 64.Kg7 Ra6 65.Rh6+-)  
60.Ke7

**B1)** 60...Rf1 61.Ra8+ Kxc7 62.Rf8 f5 (62...Rg1 63.Rxf7  
Rxg5 64.Kf6++-) 63.gxf6 g5 64.Rg8 Re1+ 65.Kf8 Re5  
66.f7+-

**B2)** 60...Rg4 61.Ra5 Rf4 62.Ra8+ Kxc7 63.Rf8+-

**58...Rf4+!** (58...Rxc6+? 59.Kxf7 Rb6 60.Ra8+ Kd7

61.Rg8+-) **59.Ke5 Rf1 60.Rd7+ Kc8 61.Kd6 f6 62.Rc7+**  
(62.Rf7 Rd1+ 63.Kc5 fxg5=) **62...Kd8 63.Rd7+ 1/2-1/2**



**E18.04 V.Anand (2794) -  
A.Shirov (2722) Leon  
Man+Comp**

Anand played **56.R4d5+** and  
Shirov resigned due to **56...Kh4**  
(56...Rf5 57.Rxf5+ Kxf5  
58.Kf2+-) **57.Rh6+ Kg4**  
(57...Kg3 58.Rg5#) **58.Rg6+**  
**Kh4 59.Rxg2+- 1-0**

Copyright 2002 Karsten Müller. All rights reserved.

*This column is available in **ChessCafe Reader** format. Click [here](#) for more information.*



[\[The Chess Cafe Home Page\]](#) [\[Book Reviews\]](#) [\[Bulletin Board\]](#) [\[Columnists\]](#)  
[\[Endgame Studies\]](#) [\[The Skittles Room\]](#) [\[Archives\]](#)  
[\[Links\]](#) [\[Online Bookstore\]](#) [\[About The Chess Cafe\]](#) [\[Contact Us\]](#)

Copyright 2002 CyberCafes, LLC. All Rights Reserved.

"The Chess Cafe®" is a registered trademark of Russell Enterprises, Inc.