



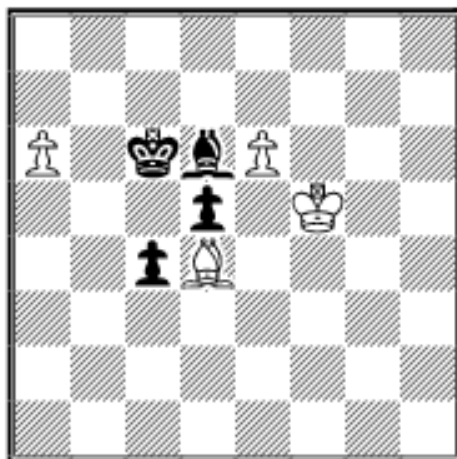
Bishops at Work (Part 2)

I continue the discussion of same-colour bishops endings (for the first part see the [ChessCafe.com Archives](#)):

B) How to deal with passed pawns?

A passed pawn is a dangerous weapon. If the defending king can blockade it securely, it is not easy to stop as the attacker can try to use his own bishop as shield for the pawn as the following example shows:

20.01 C.Engelbert (2238) - G.Putzbach (2235) Hamburg-chint 10.06.2001



What shall Black do? Is it good to wait or shall he play c3 to exchange his c-pawn for White's a-pawn?

58...c3? Putzbach made the wrong choice as White's powerful e-pawn will now decide the issue. He had to stay, where he was, e.g., 58...Bb4

59.a7 (59.Kg6 Kc7 60.Kf7 Kc6 61.Bc3 Ba3 62.Ke8 Kb6 63.Kd7 Kxa6 64.Kc6 Be7 65.Kxd5 Kb5=) 59...Kb7 60.Ke5 (60.Kg6 Ka8 61.Kf7 Kb7 62.e7 Bxe7 63.Kxe7= as White has a wrong rook's pawn.) 60...c3 61.Kxd5 c2 62.Be3 Be7 63.Kc4 c1Q+ 64.Bxc1 Kxa7 65.Kd5 Kb7 66.Bf4 Kc8 67.Kc6 Bb4 68.Bg5 Ba3! 69.Kd5 Kc7 70.Ke5 Kc6 71.Kf5 Kd5 72.Kf6 Ke4 73.Kf7 Kf5 and the position is drawn due

COLUMNISTS

Endgame Corner

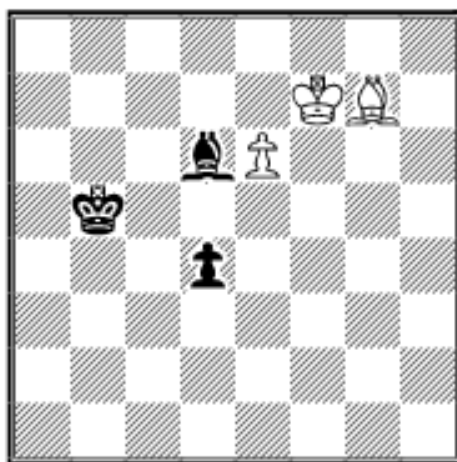
Karsten Müller



to Centurini's rule (see, e.g., *Fundamental Chess Endings* 4.26).

59.Bxc3 Kb6 60.Kf6 Kxa6 61.Kf7 Kb5 (61...Bc5 62.Bg7 d4 63.Bxd4+-) **62.Bg7!** Necessary precision 62.Bf6? Kc4 63.Be7 Bxe7 64.Kxe7 d4=. After 62.Ke8? Black has many ways to draw. One of them is to reach Centurini's position immediately: 62...d4 63.Bxd4 Kc4 64.Bf6 Kd5 65.Kd7 Bc5=

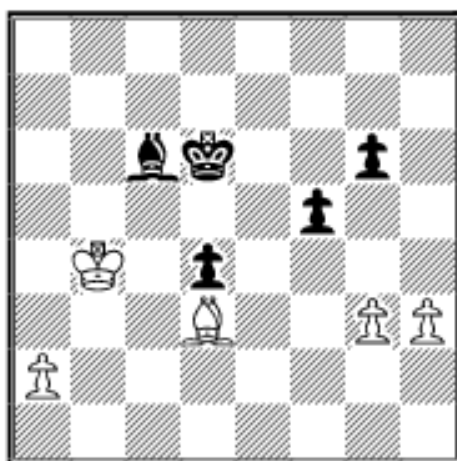
62...d4 (62...Kc4 63.Bf8+-)



63.Bxd4! Black doesn't get to f5 in time to draw by Centurini's rule. (63.Bf8? d3 64.Bxd6 d2 65.e7 d1Q 66.e8Q+ Kc4=) **63...Kc4 64.Bf6 Kd5 65.Be7! Bg3 66.Bb4 1-0** and Black resigned due to **66...Bh4 67.Bc3 Ke4 68.Bf6+-**

The next example shows a fascinating race:

20.02 S. Williams (2369) - S. Collins (2194) BCF-ch Smith & Williamson Scarborough (4), 02.08.2001



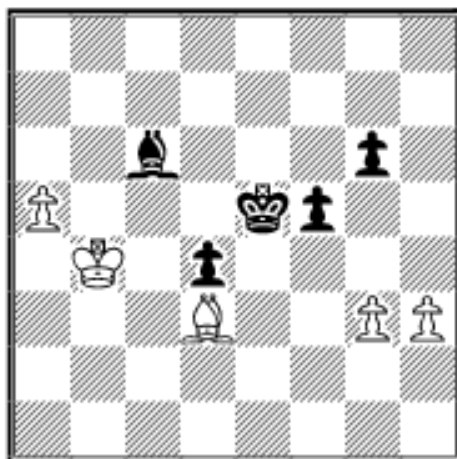
59.a4 Ke5

The radical 59...Bxa4 loses: 60.Kxa4 Ke5

A) 61.h4? f4 62.g4 f3 63.g5 (63.Bxg6 Kf4 64.h5 Ke3 65.h6 f2 66.h7 f1Q 67.h8Q Qa6+=) 63...Kf4 64.h5 Kxg5 65.hxg6 Kf6 66.Kb4 f2=

**B) 61.Kb3 f4 62.g4 g5 63.Kc4 f3 64.Kc5 f2 65.Kc4 Kf4
66.Kxd4 Kg3 67.Bf1+-**

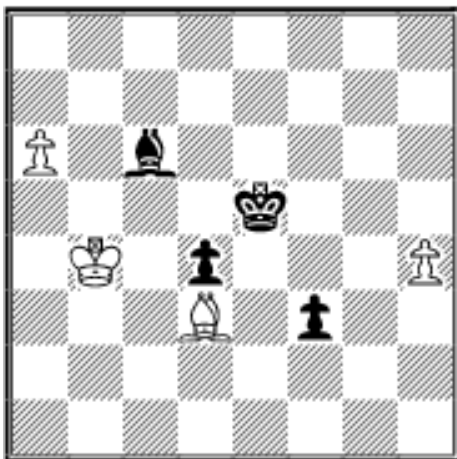
60.a5



60...g5? This race is lost. Black had to play 60...Be4! 61.Kc4 Bd5+ 62.Kc5 Be4 63.Bxe4 fxe4 64.a6 d3 65.a7 d2 66.a8Q d1Q 67.Qe8+ Kf6 68.Qxe4 Qc1+ 69.Kd4 Qa1+ 70.Ke3 Qe1+ 71.Kf4 g5+ 72.Kf3 Qh1+=

61.a6 f4 (61...g4 62.hxg4 fxg4 63.Kc5 Bg2 (63...Bf3 64.a7 Bh1 65.Be2 Bb7 66.Bxg4 d3 67.Kb6 Bg2 68.Kc7 Kd4 69.Kb8 Ke3 70.Bd1 Kd2 71.Ba4 Ke3 72.g4 Kf4 73.Bd1+-) 64.a7 Bf3 65.Bb5 Ba8 66.Be2 Ke4 67.Bxg4 Ke3 68.Bd1 d3 69.g4+-)

62.gxf4+ gxf4 (62...Kxf4 63.Kc5 Bg2 64.Kxd4 Bxh3 65.Be4+-) **63.h4 f3**

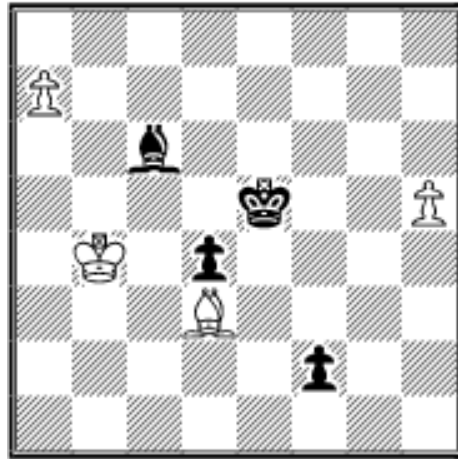


64.h5? White misses the strong 64.Kc5!, which wins a tempo: 64...Ba8 65.h5 f2 66.a7 Be4! (66...Bh1?! 67.h6 Kf6 68.Kxd4 Kf7 69.Ke3 f1Q 70.Bxf1 Kg6 71.Bd3+ Kxh6 72.Be4+-) 67.Bxe4 f1Q 68.a8Q Qc1+ 69.Kb6 Qb2+ (69...Qc4!?) 70.Kc7 Qc3+ 71.Bc6 and White should be winning

despite his wrong rook's pawn.

64...f2 65.a7 (65.Bf1 Be4 [65...Kf6? 66.Kc5 d3 67.Bxd3 Bg2 68.a7 Kg5 69.Kd4 Kxh5 70.Ke3+] 66.Kc4 d3 67.Kc3

Kf5 [67...Kd6? 68.h6 Kc7 69.Kd2 Kb6 70.Ke3+-] 68.Kd2 Kg5=)



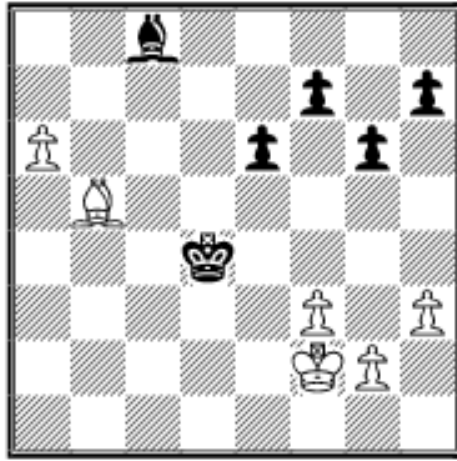
65...Kf6? Black has the right idea, but waits one move too long. He had to play 65...Be4! immediately: 66.Bf1 Kf6 67.Kc4 d3 68.Kc3 Kg5 69.Kd2 Kxh5 70.Ke3 Kg5 (70...d2? 71.Kxd2 Kg4 72.Ke3 Ba8 73.Kxf2 Kf4 74.Bg2+-; 70...Kh4? 71.Kxf2 d2 72.Ke2 Kg3 73.Kxd2 Kf2 74.Bd3 Ba8

75.Kc3 Ke3 76.Kc4 Bb7 77.Bg6 Kf4 78.Kd4 Ba8 79.Bf7+-) 71.Kxe4 (71.Kxf2 d2 72.Ke2 Kf4 73.Kxd2 Ke5 74.Ke3 Ba8 75.Bd3 Kd5 76.Be4+ Kc5 77.Bxa8 Kb6=) 71...d2 72.a8Q d1Q=

66.h6 Be4 (66...f1Q 67.Bxf1 Kg6 68.Kc5 Ba8 69.Kxd4 Kxh6 70.Bc4 Kg7 71.Bd5+-) **67.h7 Kg7** (67...Bxh7 68.a8Q Bxd3 69.Qf3+-) **68.Kc5 1-0** (68.Bxe4 works as well: 68...f1Q 69.a8Q Qe1+ 70.Kb5 Qf1+ 71.Kb6 Qf6+ 72.Ka5 Qe5+ 73.Ka4 and Black has run out of checks) and Black resigned because of **68...Bxd3 69.h8Q+ Kxh8 70.a8Q+ Kh7 71.Qh1+ Kg7 72.Qg2+-**

Sometimes strange positions arise:

20.03 G.Seul (2434) - Y.Pelletier (2531) Julian Borowski-B 3rd Essen 10.05.2001



It looks like White is winning easily due to his passed a-pawn. But it is surprisingly difficult (the game was even drawn):

42.f4? this allows Black to create a passed e-pawn.

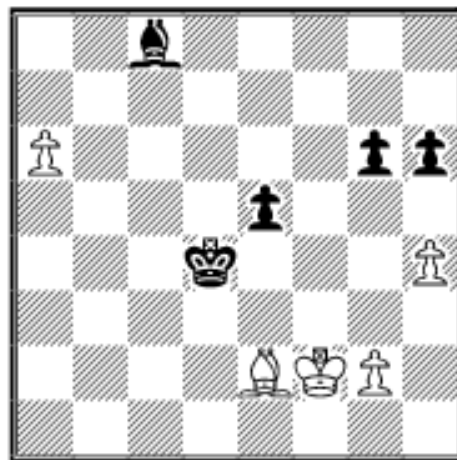
42.a7! was called for: 42...Bb7
43.Be8

A) 43...f6 44.Bf7 e5 (44...Kc5 45.Bxe6 Kb6 46.Kg3 Kxa7 47.Bg8 h6 48.Bf7 g5 49.Kg4+-) 45.Bg8 h6 46.Bh7 Kc5 47.Bxg6 Kb6 48.Be4+-

B) 43...f5 44.Bf7 Ke5 45.Bg8 Kf6 (45...h6 46.f4+ Kxf4 47.Bxe6 Ke5 48.Bc8 Ba8 49.Ba6 Kd6 50.Be2 Kc7 51.Bf3 Bxf3 52.Kxf3 Kb7 53.Kf4 Kxa7 54.Ke5+-) 46.f4 h6 47.h4 Ba8 48.g3 Bb7 49.Ke3 e5 50.fxe5+ Kxe5 51.Bc4 g5 52.Be2 g4 53.Bf1 Kd6 54.Kf4+-

42...f6 43.h4

43.Be2!? e5 44.h4 h6 45.fxe5 fxe5

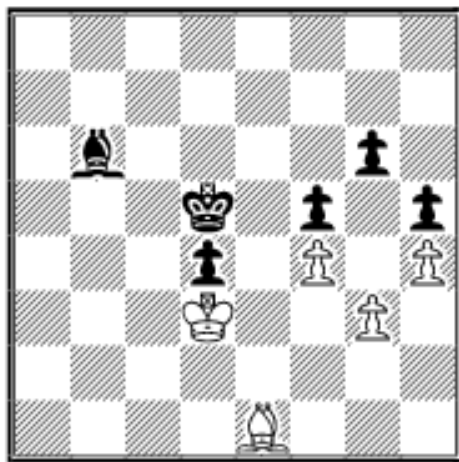


and I did not find a way for White to break through - can the readers do better?

43...h6 44.g3 1/2-1/2

The next example could also be in section A of the first part as White's king almost holds his castle together:

20.04 E.Lomer - J.Nunn German Team Cup 2002, Eckernförder Schachclub-Lübecker SV

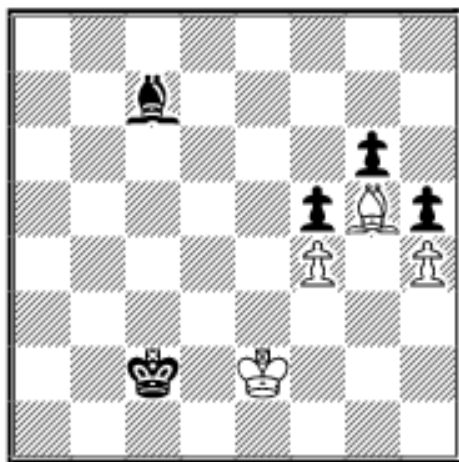


The strong English grandmaster had to fight very hard against the German amateur Edmund Lomer to break the resistance:

50.Bb4?! This makes it relatively easy for Black.

50.Bf2!? was tougher, but a reader of the German

Schachmagazin 64, Gerhard Kleber from Niederwambach, proved that Black wins nevertheless: 50...Ba5 51.Bxd4 Be1 52.Bf6 Bxg3 53.Bg5 Bf2 54.Bd8 Bc5 55.Bf6 Bd6 56.Bg5 Bc7 57.Ke3 Kc4 58.Bf6 Bb6+ 59.Kd2 Bd4 60.Bd8 Bg7 61.Ke3 Bh8 62.Be7 Kc3 63.Bd8 Bd4+ 64.Ke2 Kc2 65.Be7 Bb6 66.Bf6 Bc7 67.Bg5



Black has to lose a tempo now:

67...Bb8 68.Bh6 Bd6 69.Bg5 Bc7 70.Ke3 (70.Bh6 Bd8—+) 70...Kd1 71.Bf6 (71.Kd4 Ke2 72.Kd5 Kf3 73.Ke6 Bxf4 74.Kf7 Kg4 75.Kxg6 Bg3—+) 71...Ke1 72.Be7 Kf1 73.Kf3 Bb6 74.Bf6 Kg1 75.Kg3 Bf2+ 76.Kf3 Be1 77.Ke2 Bg3 78.Kf3 Kh2 79.Be7 Kh3 80.Bf6 Bxh4

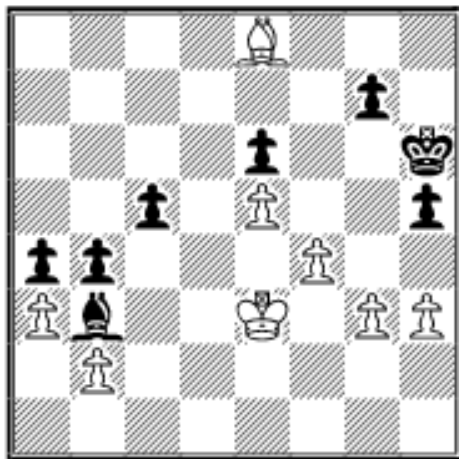
81.Bd4 Bg3 82.Bg1 h4 83.Be3 Kh2 84.Bd4 Bxf4 85.Kxf4 Kg2—+ Very instructive stuff!

50...Bc5 51.Be1 Ba3 52.Bf2 Bb2 53.Be1 Ba1 54.Bf2 Bc3 55.Bg1 Be1 56.Bh2 Bf2 57.Ke2 Be3 58.Kd3 Kc5 59.g4 hxg4 60.Bg3 Kd5 0-1

Addendum

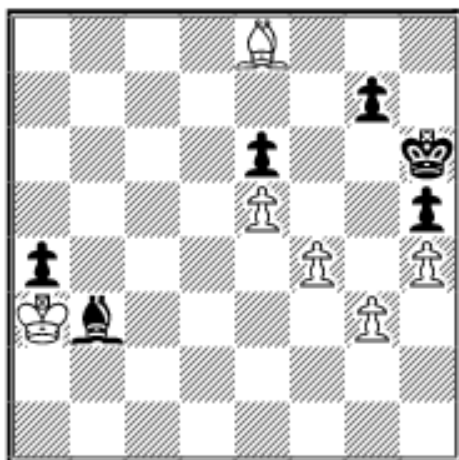
After I had finished this column I noticed the following very instructive bishop endgame from the Einstein candidates tournament, Dortmund 2002. It is not as amazing as the endgame Topalov and Shirov played in Linares 1998 (you certainly remember Shirov's incredible move 47...Bh3!!!). But it is nevertheless worth analyzing:

V.Topalov (2745) - A.Shirov (2697) Dortmund 2002

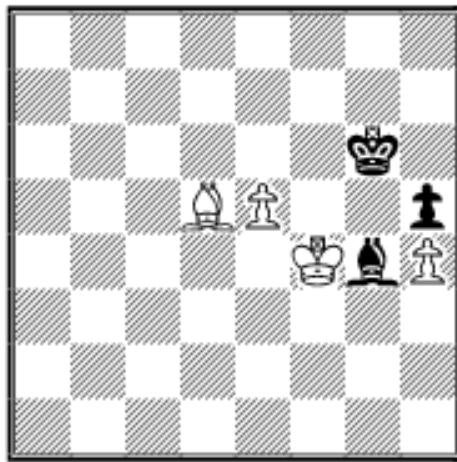


46.Kd2?

The following win was shown by Maxim Notkin in the daily internet newspaper *Chess Today* No.610 and 611: 46.h4! c4!? 47.Kd2 (47.axb4?? c3 48.Bxa4 cxb2—+) 47...c3+ 48.Kc1 cxb2+ 49.Kxb2 bxa3+ 50.Kxa3

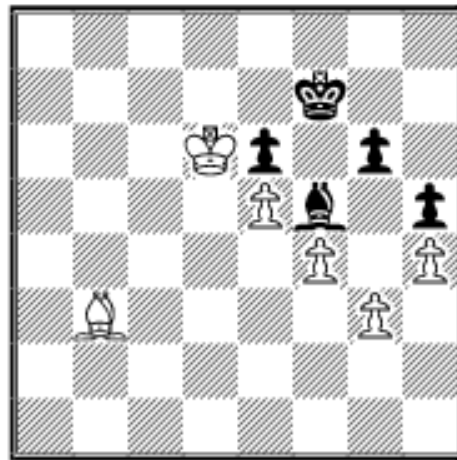


A) 50...Bd1?! now White can also win with 51.f5 Bg4 52.fxe6 Bxe6 53.Kxa4 g5 54.Kb5 gxh4 55.gxh4 Bg4 56.Kc5 Kg7 57.Kd4 (57.Kd6?! Kf8 58.Bd7 is met by 58...Kg7!) 57...Kf8 58.Bc6 Ke7 59.Ke4 Kf7 60.Bd5+ Kg6 61.Kf4

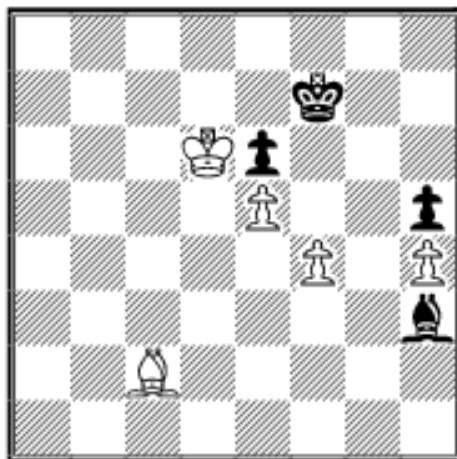


Black is now in zugzwang and has to allow e6 or Kg5, e.g.,
 61...Bd7 62.Be4+ Kh6
 (62...Kg7 63.Kg5 Bg4 64.Bg6+-
 ; 62...Kf7 63.Kg5 Ke6 64.Bf5+
 Kxe5 65.Bxd7 Kd6 66.Kxh5+-)
 63.Bf5 Ba4 64.e6 Kg7 65.Ke5
 Bb5 66.e7+-

B) 50...Bc2 51.Bxa4 Bf5
 52.Kb4 g6 53.Kc5 Kg7 54.Kd6 Kf7 55.Bb3



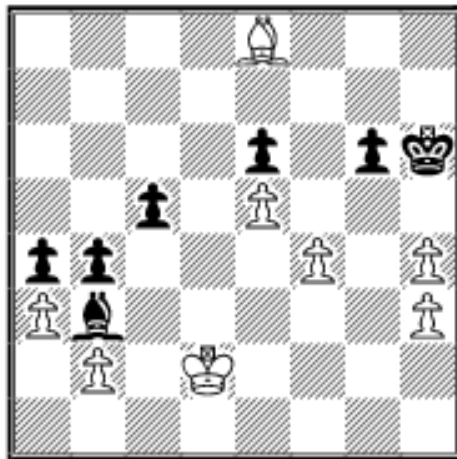
and Black has to leave the magic square f5. The following winning plan was found by Maxim Notkin: 55...Bg4 56.Bc2 Bh3 (56...Bf5 57.Bxf5 gxf5 58.Kd7+-) 57.f5!! The first white pawn on f5 57...gxf5 (57...Bxf5 58.Bxf5 exf5 59.Kd7+-) 58.Bb3 f4 59.gxf4 Bf5 (59...Bg4 60.Bc2 Be2 61.f5 exf5 62.Bxf5 Bc4 63.Be4 Kg7 64.Bd5+-) 60.Bd1 Bg4 (60...Kg6 61.Ke7 Bg4 62.Bc2+ Bf5 63.Bxf5+ Kxf5 64.Kf7+-) 61.Bc2 Bh3



The square f5 has a magical attraction for the white pawns:
 62.f5! Bxf5 63.Bxf5 exf5
 64.Kd7 f4 65.e6++-

46...h4! Black's desperately needs counterplay on the kingside. **47.gxh4** After 47.g4? Black gets counterplay with 47...g5 48.f5 (48.Ke3? c4 49.fxg5+ Kxg5 50.Kd2 c3+ 51.bxc3 bxa3 52.Kc1 Kf4+-)

48...exf5 49.gxf5 g4 50.hxg4 h3 51.e6 Kg5 52.Bc6 h2
53.e7 Bf7 which is certainly not favourable for White.
47...g6



48.Kc1 after this retreat the draw is relatively easy.

48.Bb5!? was worth trying:

48...Kh5 49.Kd3 Kxh4 50.Bc4
bxa3! (50...Bxc4+? loses as
GM Hort shown: 51.Kxc4 bxa3
52.bxa3 Kxh3 53.Kxc5 Kg4
54.Kd6 Kxf4 55.Kxe6 g5
56.Kd5 g4 57.e6 g3 58.e7 g2
59.e8Q g1Q 60.Qf7+ Kg3

61.Qg6++-) 51.bxa3 Kg3 52.Bxb3 axb3 53.a4 Kxf4 54.a5
c4+ 55.Kc3 Ke3 56.a6 b2 57.Kxb2 Kd2 58.a7 c3+ 59.Kb3
c2 60.a8Q c1Q 61.Qg2+ Kd3 62.Qxg6+ Kd4 63.Qxe6
Qe3+=

**48...Kh5 49.Bf7 Kxh4 50.Bxg6 Kg3! 51.f5 exf5 52.Bxf5
bxa3 53.bxa3 Kf4 54.Bc2 Be6! (54...Kxe5?? 55.Bxb3
axb3 56.a4 c4 57.a5 Kd4 58.a6 Kc3 59.a7 b2+ 60.Kb1 Kb3
61.a8Q c3 62.Qa2++-) 55.h4 Kg4 56.Bxa4 Kxh4 57.Kc2
Kg5 58.Kc3 1/2-1/2**

Sources:

ChessBase MEGABASE 2001

Chess Today

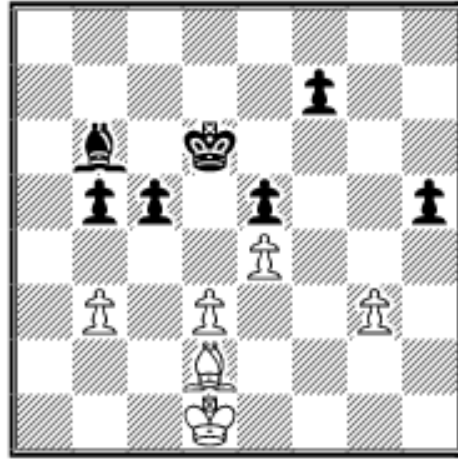
The Week in Chess

Secrets of Chess Intuition, Alexander Beliavsky and Adrian
Mikhalchishin, Gambit 2002

Fundamental Chess Endings, Karsten Müller and Frank
Lamprecht, Gambit 2001

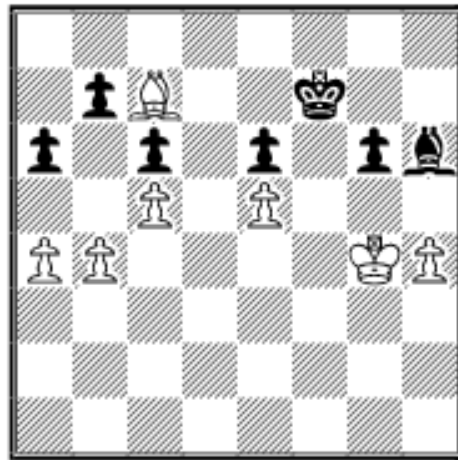
Schachmagazin 64 No.10/2002

Exercises (Solutions next month)



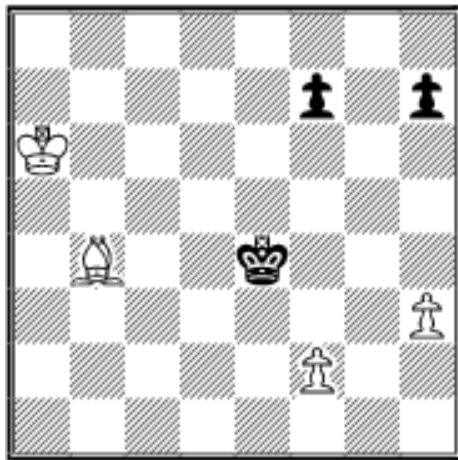
**E 20.01 *E.Maahs* (2194) -
G.Putzbach (2242) IHEM
Hamburg 20.05.2002**

Does the breakthrough 1...c4
win ? If not, can Black win?



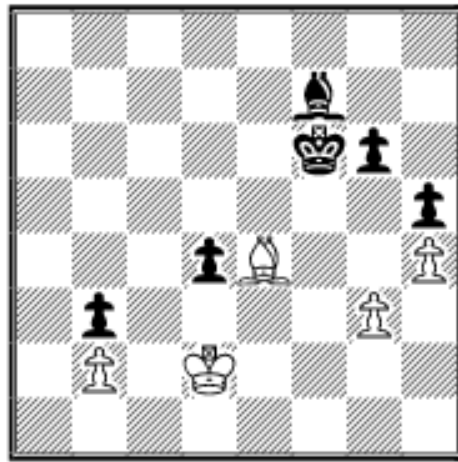
**E 20.02 *K.Ozturk* (2017) -
S.Besheva (2125) 3rd EIWCh
Varna 03.06.2002**

How to assess the position with
Black to move?



**E 20.03 *A.Othman* (2367) -
M.Hussan (2152) Dubai open
24.04.2002**

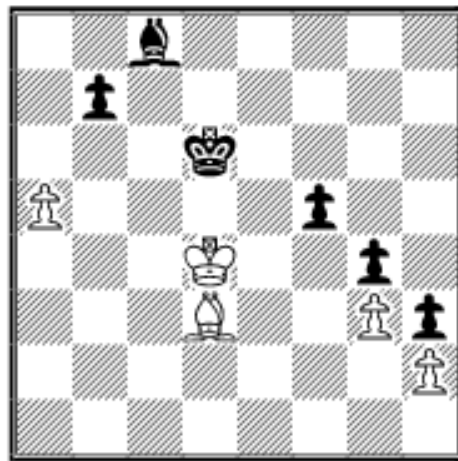
Can Black to move save
himself?



E20.04 *P.Cramling* (2505) - *A.Shirov* (2580) Stockholm 1990

Can Pia Cramling to move hold on despite her pawn deficit?

Solutions to last month exercises

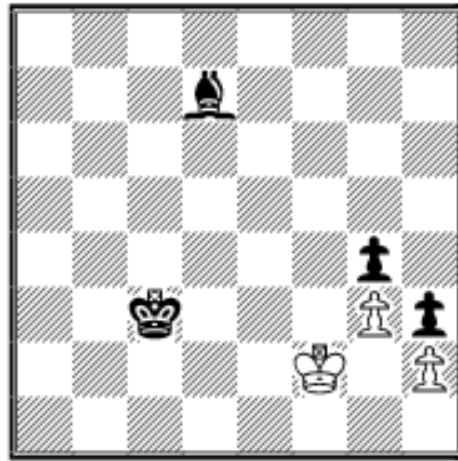


E19.01 *T.Thiel* (2335) - *K.Müller* (2505) German Bundesliga 1997

White can save the draw as follows:

I 50.Ke3!! Kc5 (50...Ke5 51.Bc4 Be6 52.Bb5 Bd5 53.Bf1 Be4 54.Bc4 and Black can't

make meaningful progress as 54...f4+? 55.gxf4+ Kf5 is met by 56.Bg8 Bc6 57.Bh7+ Kf6 58.Kf2) 51.Kf4 Kb4 52.a6! (52.Bxf5? Bxf5 53.Kxf5 Kxa5 54.Kxg4 b5—) 52...bxa6 53.Bxa6 Bxa6 54.Kxf5 Bc8+ 55.Ke4 Kc3 56.Ke3 Bd7 57.Kf2=



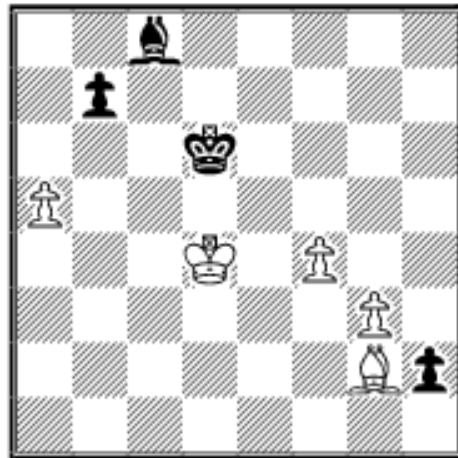
and White has constructed a fortress.

II 50.Bf1? f4! 51.gxf4

A) 51...Bd7? 52.Ke3 g3
(52...Bb5?? 53.Bxb5 g3
54.Be2+-) 53.hxg3 h2 54.Bg2
Bc6 55.Kf2 h1Q 56.Bxh1 Bxh1
57.a6 bxa6 (57...b5 58.Ke3 Kc5
59.f5 Kb6 60.g4=) 58.Ke3 Kc5

59.Kd3 Kb4 60.Kc2=

B) 51...g3 52.hxg3 (52.Bxh3 gxh2 53.Bg2 Bd7 54.Ke3 Bc6
55.Kf2 h1Q 56.Bxh1 Bxh1 57.Ke3 Kc6 58.a6 b5 59.a7
Kb7 60.Kd4 Kxa7 61.f5 Bf3—) 52...h2 53.Bg2



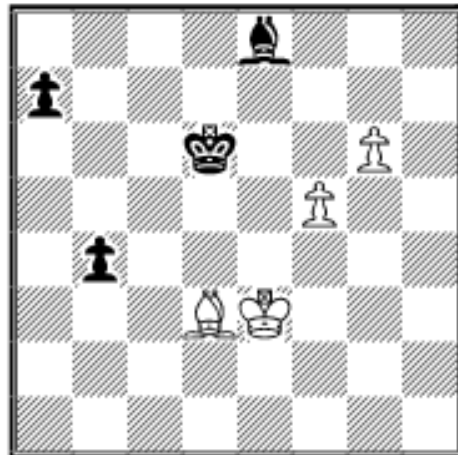
53...Bh3!! The point of Black's
play! 54.Bxb7 (54.Bh1 Bd7—+)
54...Bd7 55.f5 Bc6—+

III 50.Bc2? f4 51.gxf4 Bd7—+

IV 50.Be2? f4 51.gxf4 Bd7—+

V The game continuation
50.Bc4? allowed the decisive

breakthrough f5-f4: **50...f4**
51.gxf4 Be6 52.Bf1 Bd5 53.Ke3 g3 0–1



**E19.02 B.Raphael - H.Kennicott New
York 08.10.1857**

The position is won for White,
but he has to play precisely:

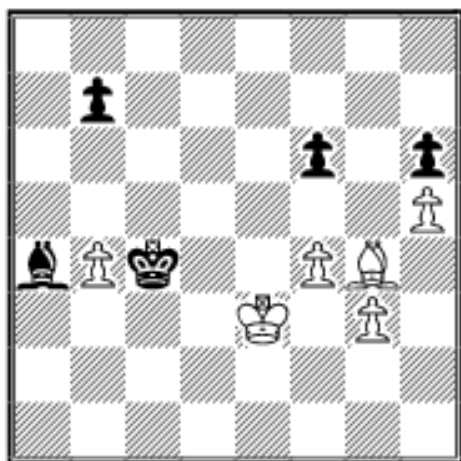
55.Bc4!

55.f6? a5

A) 56.Kd4 b3 57.g7 (57.Bf5 Bxg6 58.Bxg6 b2 59.f7 Ke7=; 57.Kc3 a4 58.Kb2 Bxg6 59.Bxg6 Ke6 60.f7 Ke7=) 57...Bf7 58.Bc4 b2 59.Bxf7 b1Q 60.g8Q Qb2+=

B) 56.f7 Bxf7 57.gxf7 Ke7 58.Bc4 a4 59.Kd2 b3 60.Kc3 Kf8 61.Bd5 Ke7= and White can't make progress, e.g. 62.Kd4 b2 63.Ba2 b1Q 64.Bxb1 Kxf7=

55...Ke7 56.g7 Bf7 57.Bxf7?? A horrible blunder. 57.g8Q Bxg8 58.Bxg8 Kf6 59.Kf4 a5 60.Bb3+- was winning easily as the bishop is a source of tempi. **57...Kxf7 58.f6 a5 59.Kd3 a4 60.Kc4 a3 61.Kb3 $\frac{1}{2}$ - $\frac{1}{2}$**



E19.03 E.van Haastert (2417) - M.Hoffmann (2428) Dutch Team Playoffs Enschede 10.05.2002

White wins with **57.b5!** as Black can't go into the pawn endgame. **57...Kc5**

57...Kxb5 58.Bd7+ Ka5

59.Bxa4 Kxa4 60.g4+-

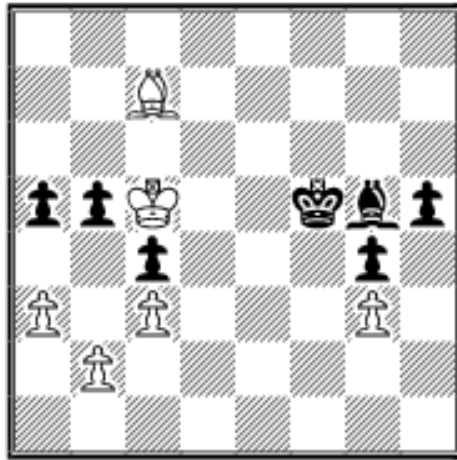
57...Bxb5 58.Be2+ Kc5 59.Bxb5 Kxb5 60.g4+-

58.Be2 f5

58...Kd6 59.g4 b6 (59...Ke7 60.b6 Bd7 61.Bf3 Bc8 62.Kd4 Kf8 63.Kc5 Ke7 64.Be4 Bxg4 65.Bxb7 Kd7 66.Bc6+ Kc8 67.Kd6 Kb8 68.Ke7 f5 69.Kf6 Bxh5 70.Kxf5+- White's bishop controls b7 and h1 and so the principle of one diagonal is valid here. White's king will push the f-pawn forward, which will cost Black's bishop.) 60.g5 Ke7 (60...fxg5 61.fxg5 hxg5 62.h6 Bc2 63.Bd3+-) 61.gxh6 Kf8 62.Kd4 Bb3 63.Bc4 Bc2 64.Kd5+-

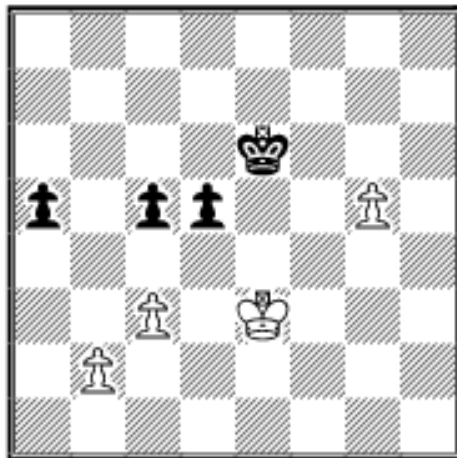
59.Bd3 Bxb5 (59...Bd1!? 60.Bxf5 Bxh5 61.g4 Be8 62.Bd3 Kd6 63.Kd4 b6 64.f5 Bd7 65.Ke4 Be8 66.Kf4 Bf7 67.f6 Ke6 68.g5 hxg5+ 69.Kxg5 Kd6 (69...Ke5 70.Bg6 Ke6 71.Bxf7+ Kxf7 72.Kf5+-) 70.Kh6+-)

60.Bxf5 Bc4 (60...Bf1 61.Kf2 Bc4 62.g4 Kd6 63.g5 hxg5 64.h6 Bg8 65.fxg5 Ke7 66.h7+-) **61.g4 Kd6** (61...Bf7 62.Bg6 Bg8 63.g5 hxg5 64.fxg5 Kd6 65.h6+-) **62.g5 Ke7** (62...hxg5 63.fxg5 Ke7 64.h6 Kf8 65.g6 Ba2 (65...b5 66.Bd3 Bf7 67.h7+-) 66.Kd4 b5 67.Ke5 b4 68.Kf6 Kg8?! 69.h7+ Kh8 70.g7#) **63.Kd4 Be2 64.Bg6 Kf8 65.gxh6 Bg4 66.Kc5 Kg8 67.Kb6 Bf3 68.f5 Kh8 69.f6 Bd5 70.Kc5** Of course not 70.f7?? Bxf7= as White has only wrong rook's pawns left. **70...Ba2 71.Kd6 Bc4 72.Ke7 b5 73.Bd3 Bd5 74.Bxb5 1-0**



E19.04 Rogulj – Groszpeter Gleisdorf 1996

Groszpeter played the amazing **1...Bf4!! 2.Bxf4** (2.gxf4 h4 3.Kxb5 h3 4.Bb6 h2—+) **2...h4 3.Be3 h3 4.Bg1 Ke4 5.a4 bxa4 6.Kxc4 Kf3 7.Kd3 Kg2 0-1**



E19.05 Z.Ivanovic (2232) - M.Savic (2184) Croatian Cup Pula 08.05.2002

The pawn endgame is surprisingly tricky: **49.Kf4?** This allows a breakthrough on the queenside. The only way to stop Black is **49.c4!! d4+ 50.Ke4 a4 51.Kf4 Kf7 52.Ke4**

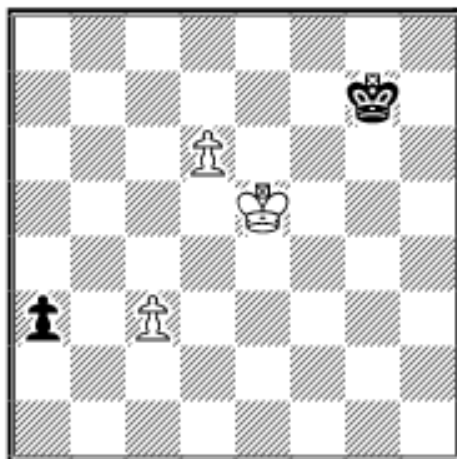
Kg6 53.Kf4 Kh5 54.Kf5 d3 55.g6 d2 56.g7 d1Q 57.g8Q Qc2+ 58.Kf4 Qf2+ 59.Ke4 Qd4+ 60.Kf3 and White should be able to hold the queen endgame.

49...a4! 50.g6

I 50.Kg4 c4 51.Kh5 d4 52.Kh6 a3 53.g6 axb2 54.g7 Kf7—+

II 50.Ke3 Kf5 51.c4 d4+ 52.Kd3 Kxg5—+

50...Kf6 51.g7 Kxg7 52.Ke5 d4! 53.cxd4 (53.Ke4 dxc3 54.Kd3 cxb2 55.Kc2 a3—+) 53...c4 54.d5 c3 55.bxc3 a3 56.d6



56...Kf7! 0-1 The careless 56...a2? spoils it due to 57.d7 a1Q 58.d8Q=

Copyright 2002 Karsten Müller. All rights reserved.

*This column is available in **ChessCafe Reader** format. Click [here](#) for more information.*



[\[The Chess Cafe Home Page\]](#) [\[Book Reviews\]](#) [\[Bulletin Board\]](#) [\[Columnists\]](#)

[\[Endgame Studies\]](#) [\[The Skittles Room\]](#) [\[Archives\]](#)

[\[Links\]](#) [\[Online Bookstore\]](#) [\[About The Chess Cafe\]](#) [\[Contact Us\]](#)

Copyright 2002 CyberCafes, LLC. All Rights Reserved.

"The Chess Cafe®" is a registered trademark of Russell Enterprises, Inc.