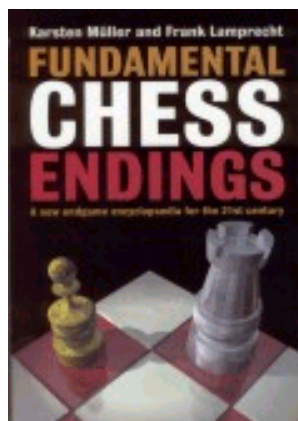




## COLUMNISTS

## Endgame Corner

Karsten Müller



Order

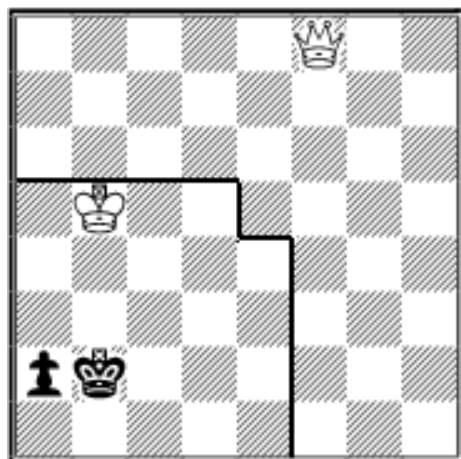
[Fundament Chess  
Endings](#)

by Karsten Müller &  
Frank Lamprecht  
The BCF Book of the  
Year!

## Winning Zones

The queen is so strong that it usually beats a whole horde of pawns, if they are not too far advanced. But even a single pawn can draw if it has reached the seventh rank. You certainly know that the queen normally wins against a knight or central pawn (if not you can look it up in almost any endgame reference work). With a rook or bishop's pawn, matters are completely different as the defender has stalemate defences at his disposal. The attacker only wins if the king is close enough to support the queen. I will now look at several such cases. It is of course not necessary to know all these zones by heart but I hope that you profit from studying the examples. Then you will be able to deal successfully with such positions. I start with the rook's pawn:

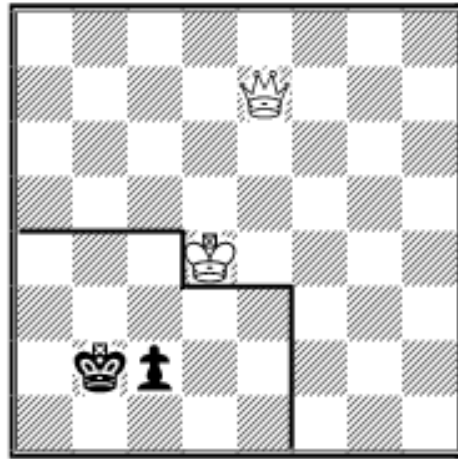
### 22.01 Queen vs a-pawn



White to move only wins, if his king is inside the zone: **1.Qf2+ Kb1** (1...Kb3?! 2.Qd4 Kc2 3.Qa1+- when the queen gets in front of the pawn she wins always.) **2.Kb4 a1Q 3.Kb3 Qe5 4.Qc2+ Ka1 5.Qa2#**

With a bishop's pawn, the zone is considerably smaller:

### 22.02 Queen vs c-pawn



Even d4 is not near enough:  
**1.Qe2!?** (1.Qb4+ Ka1 2.Qa3+ Kb1 3.Qb3+ against a knight's or central pawn this manoeuvre would have won as Black's king would be forced to go in front of his pawn. But now he has 3...Ka1! 4.Qxc2 stalemate.)

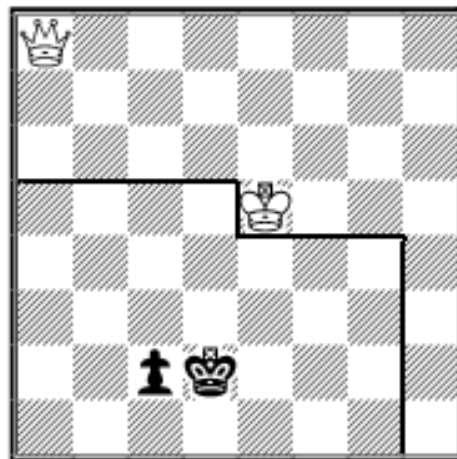
**1...Ka1!** (1...Kb1? denies the queen the very important

square b1 2.Kc3 c1Q+ 3.Kb3+-) **2.Kc3 c1Q+** **3.Kb3 Qb1+** **4.Ka3 Qc1+=** or 4...Qd3+ 5.Qxd3 stalemate.

When the defending king is on the other side of the c-pawn, the winning zone is much larger as Black has to block his c-pawn on his way to the queenside and there are new mating motifs on the kingside:

## 22.03 Queen vs c-pawn - Kd2

### After Grigoriev



e5 is just outside the zone, but Black has to defend extremely carefully to save himself:

**1.Qd5+**

After 1.Qa2 Black has to find 1...Kc3:

**A) 1...Kc1? 2.Kd4 Kd1 3.Ke3** (3.Kd3?? runs into 3...c1N+=)

**3...c1Q+ 4.Kd3+-**

**B) 1...Kd3? 2.Qb2 Kd2 3.Ke4 Kd1 4.Kd3+-**

**C) 1...Kd1? 2.Kd4 c1Q 3.Kd3+-**

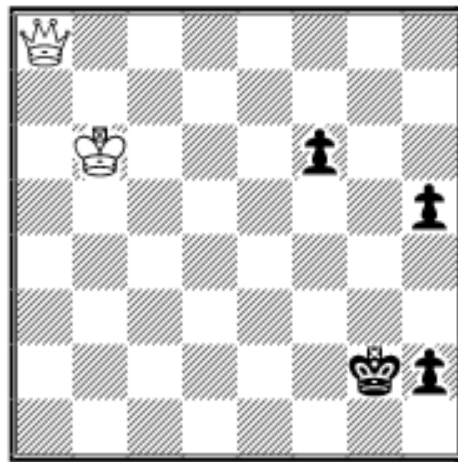
**D) 1...Kc3!! 2.Qa1+ Kd2 3.Qa5+ Kd1! 4.Qa4 Kd2! 5.Qf4+ Kd1! 6.Qd4+ Kc1=**

Black has 5 moves now, but only one of them does the job:  
**1...Ke1!** (1...Ke3? 2.Qg2 c1Q 3.Qg5+--; 1...Kc3? 2.Qd4+ Kb3 3.Qa1+-; 1...Kc1? 2.Qa2 Kd1 3.Kd4 c1Q 4.Kd3+-; 1...Ke2? 2.Qa2 Kd1 3.Kd4 c1Q 4.Kd3+-)

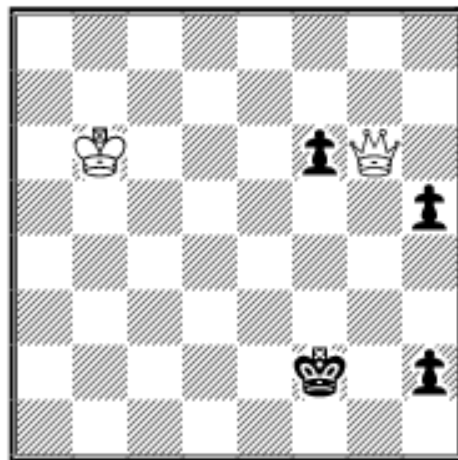
**2.Qh1+ Kd2! 3.Qg2+ Kc1 4.Kd4 Kb1!=** as White's king is just outside the winning zone.

Additional pawns can be the defenders undoing as they prevent a stalemate defence:

**22.04 J.Dorfman (2505) - G.Timoshchenko (2505) URS-ch49 Frunze 1981**



**63...Kg1 64.Qa1+ Kg2  
 65.Qb2+ Kg1 66.Qb1+ Kg2  
 67.Qg6+ Kf2**



Now White has to take the right pawn: **68.Qxh5**

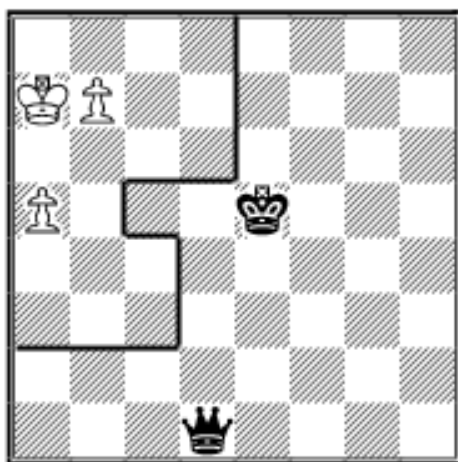
68.Qxf6+?? spoils it: 68...Kg2  
 69.Qg5+ Kf2 and the h5-pawn controls the square g4, which is of vital importance for the winning manoeuvre. So to make progress White has to take the

pawn allowing the stalemate defence. 70.Qxh5 Kg2=

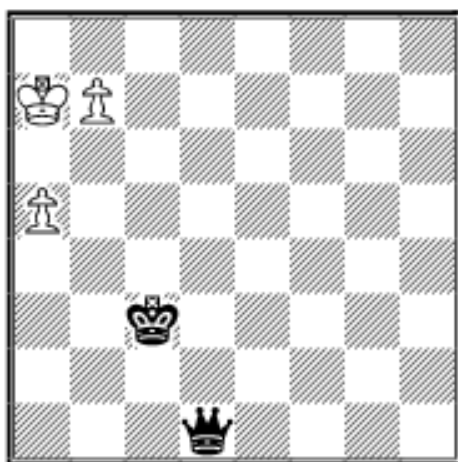
**68...Kg2 69.Qg4+ Kf2 70.Qh3 Kg1 71.Qg3+ 1-0** and  
Black resigned due to **71...Kh1 72.Qf2** no stalemate **72...f5**  
**73.Qf1#**

But sometimes additional pawns don't spoil the defence  
and so winning zones arise again:

### **22.05A X.Bedouin (2115) - S.Kasparov (2475) 22nd Open Bethune 2001**



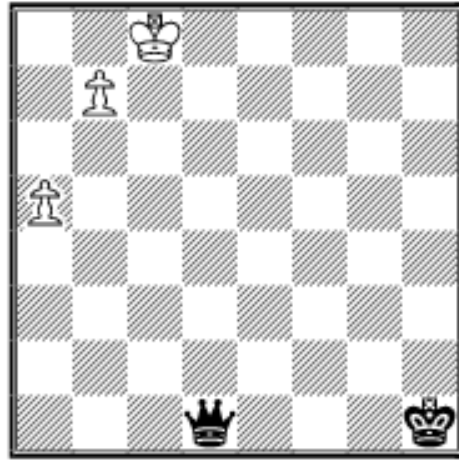
**56...Qd4+ 57.Ka8** (57.Ka6 is  
another defence: 57...Qd8  
58.b8Q+! Qxb8 stalemate)  
**57...Qd5 58.a6 Kd6 59.Ka7**  
**Qd4+ 60.Ka8 Qe4 1/2-1/2**



### **22.05B**

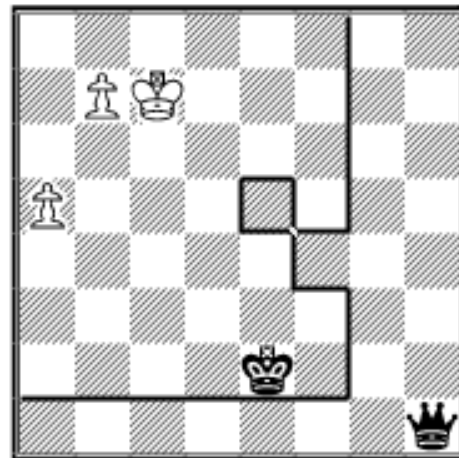
With the king on c3 the  
winning procedure is as  
follows: **1...Qd4+ 2.Ka6**  
(2.Ka8 Qd5 3.a6 Kb4 4.Ka7  
Qc5+ 5.Ka8 Qc6—+) **2...Qd6+**  
**3.Ka7 Qc7 4.a6 Kb4 5.Ka8**  
**Qc6 6.Ka7** (6.a7 Qd5 a fatal  
zugzwang 7.Kb8 Qd8#) **6...Ka5**

**7.b8Q Qxa6#**

**22.05C**

With the king on the bad square c8 Black even wins despite his offside king: **1...Qc2+ 2.Kd8 2.Kb8 Qc5 3.a6 Qb6!** and White's a-pawn is lost.  
**2...Qd2+ 3.Kc8 Qc3+ 4.Kd7 Qe5 5.a6 Qb8 6.Kc6 Qa7 7.Kc7 Kg2 8.Kc8 Qxa6--+**

On c7 is a better place as the route via b6 is available and so the winning zone appears again:

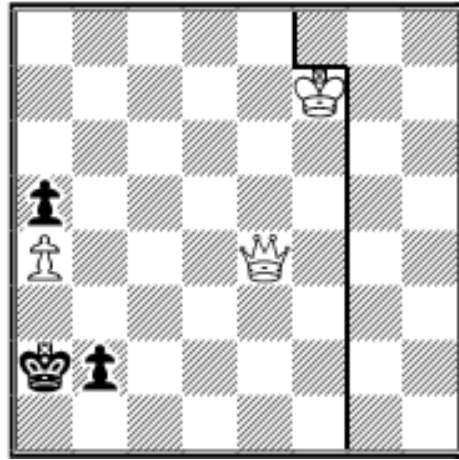
**22.05D**

e5 and f4 are outside the zone as Black has no diagonal check then. I have put Black's queen on h1 as with the queen on d1 the zone would be much smaller (check this for yourself!). Black is winning as his king is close enough:

**1...Qh2+ 2.Kb6** (2.Kc8 Qh8+ 3.Kc7 Qe5+ 4.Kc8 Qf5+ and Black wins the a-pawn.) **2...Qe5! 3.Ka6** (3.a6 Qd4+ 4.Kc7 Qa7 and Black wins the a-pawn.) **3...Qb8** (3...Kd3?? 4.b8Q Qxb8 stalemate) **4.Kb6 Kd3 5.a6 Kd4 6.a7 Qd6+ 7.Kb5** (7.Ka5 Qc5+ 8.Ka6 Qc6+--+ ) **7...Qc5+ 8.Ka6 Qc6+--+**

For pawns on a5 and b6 such winning zones can be constucted as well (depending of the placements of the kings and the queen of course). I will not do this, but instead look at the following formation:

**22.06 Pawns a4 vs a5 and b2**



The winning zone is explained as follows: White must either be able to reach b5 or c4 in three moves to win as follows:

**1.Qc2** 1.Qd5+ Ka1 2.Qxa5? b1Q leads to a theoretically drawn queen endgame. **1...Ka1** 1...Ka3 2.Qb1+- (2.Ke6+-) **2.Ke6** b1Q **3.Qxb1+ Kxb1** **4.Kd5** Kc2 **5.Kc4!** bodycheck

**5...Kd2 6.Kb5** Kd3 **7.Kxa5** Kc4 **8.Kb6+-**

### Sources:

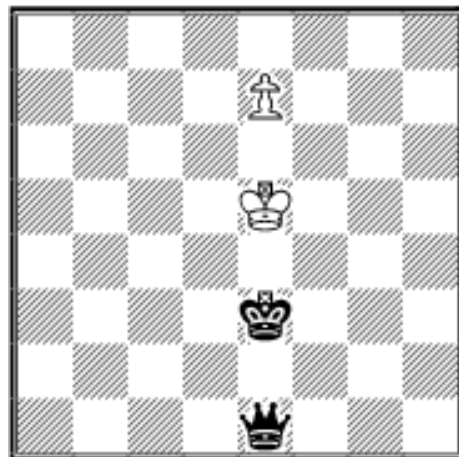
*Fundamental Chess Endings*, K.Müller and F.Lamprecht, GAMBIT 2001

ChessBase MEGABASE 2001

*The Week in Chess*

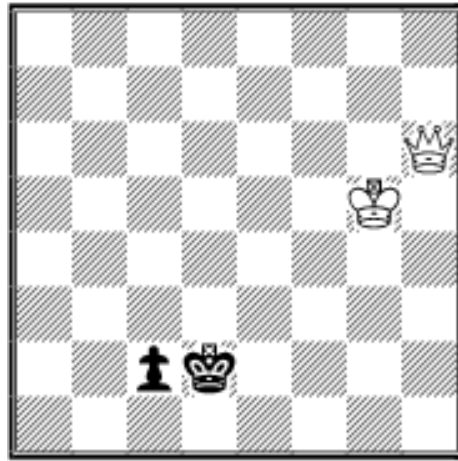
*Informator* 66

### Exercises (Solutions next month)



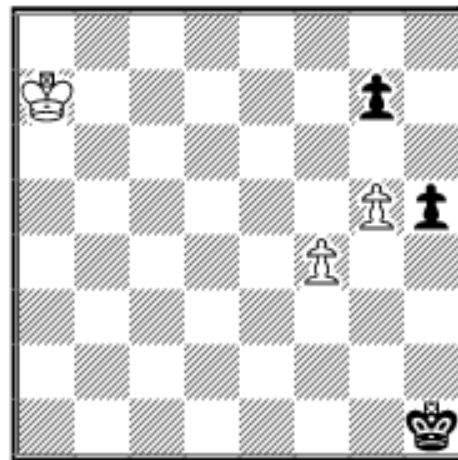
**E 22.01 A.Troitzky (end of a study) 1935**

It looks like White is completely lost. Is this true? (White to move)



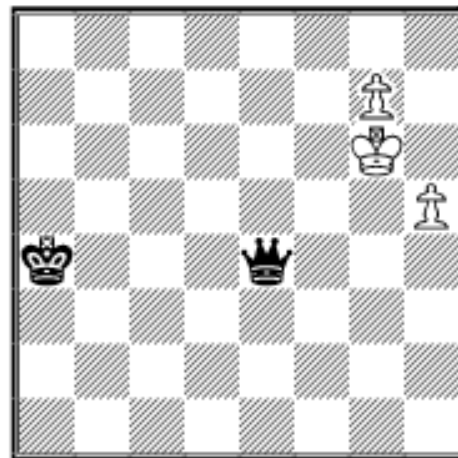
## E 22.02

White's king is outside the winning zone isn't he? (White to move)



## E 22.03 *J.Diaz* (2410) - *G.Camacho* Pinar del Rio 1996

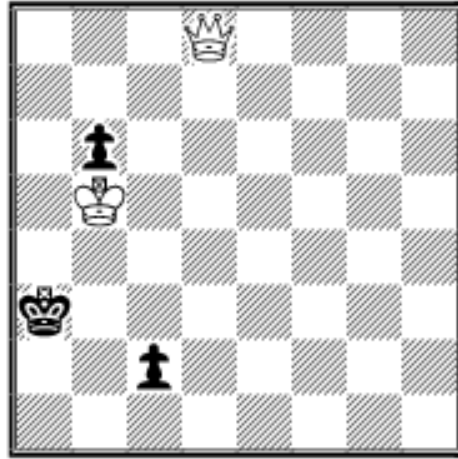
Can Black to move save himself?



## E22.04 *N.Saleh* (2256) - *S.Testor* (2164) Open Oberwart 2002

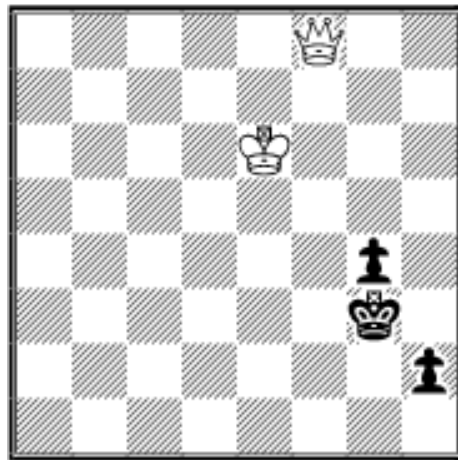
Which is the right square?





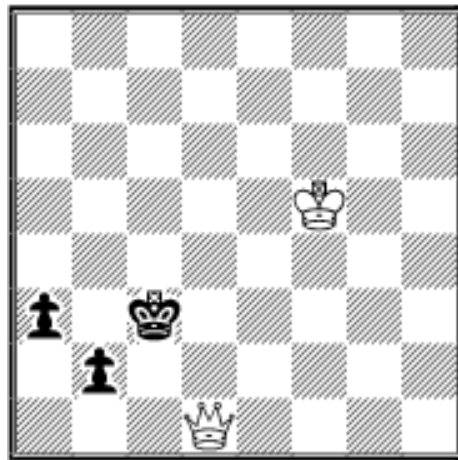
**E22.05 *H.Palsson* (2182) - *G.Rey* (2359) Oz.com qualifier blitz Internet ICC 2000**

It is unusual to analyse a blitz game, but this position is quite interesting. Can White to move win?



**E22.06 *R.Gimber* - *E.Maurer* GER-ch Seniors 13th Dresden 2001**

White to move and win.

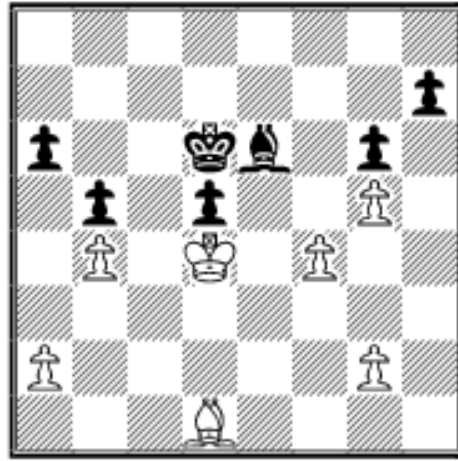


**E22.07 *A.Winnicki* (2010) - *A.Czaeczine* (2083) GER-ch U18 Girls Winterberg 2002**

Black's pawns are very far advanced. Can White to move stop them?

**Solutions to last month exercises**

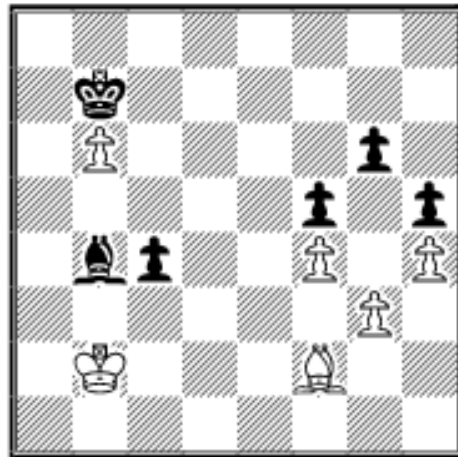




### E21.01 *A.Karpov - V.Hort* Budapest Tungsram 1973

Karpov won easily using the sharp weapon zugzwang as all Black's pawns are on light squares and he has 3 weaknesses (on a6,d5 and h7):  
**44.Bf3 Bf7 45.Bg4** and Hort resigned due to **45...Bg8**

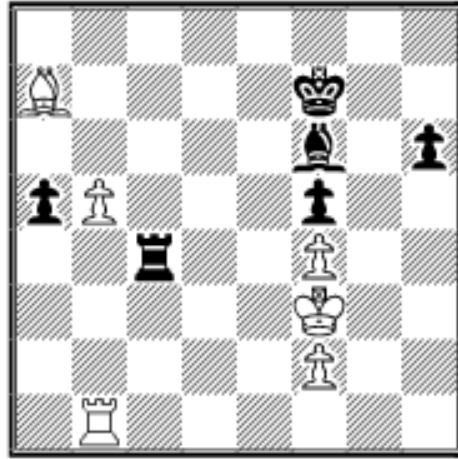
**46.Bc8 Kc6 47.a3 Bf7 48.Ke5 Bg8 49.Bg4 Kc7 50.Bf3 d4**  
(50...Kc6 51.g4 Bf7 52.f5 Bg8 53.Kf6+-) **51.Kxd4 Kd6**  
**52.Bg4 Bd5 53.g3 Bc4 54.Bc8+-**



### E21.02 *A.Karpov (2690) - J.Bellon Lopez (2415)* Linares 1981

Karpov had to defend very precisely: **49.Ka2!** (49.Kc2? Ba5 50.Bd4 Kc6 (50...Bxb6? 51.Kc3 Ba5+ 52.Kxc4 Be1 53.Kd5 Bxg3 54.Ke6=) 51.b7 Kxb7 52.Bf2 Kc6+-) **49...Ba5**

**50.Ka3! Bc3** (50...Bxb6 51.Bxb6 Kxb6 52.Kb4 c3 53.Kxc3 Kc5 54.Kd3 Kd5 55.Ke3 Kc4 56.Ke2 Kd4 57.Kd2 (57.Kf3? Kd3 58.Kf2 Kd2 59.Kf3 Ke1 60.Kg2 Ke2 61.Kg1 Kf3 62.Kh2 Kf2 63.Kh3 Kg1+-) 57...Ke4 58.Ke2=) **51.Ka4 Bd2 52.Ka3! Ba5 53.Ka4 Bd2 54.Ka3 Kc6 55.Ka4 Bc3 56.b7 Kxb7 57.Kb5 Bd2 58.Kxc4 Kc6 59.Kd3** 1/2-1/2



**E21.03 L.Portisch (2605) -  
A.Karpov (2705) Tilburg  
1986**

**51...Rb4!** was an excellent choice (51...a4? 52.b6 Bd4 53.Rb5 Ke6 54.Ra5 Rb4 55.b7 Bxa7 56.Rxa7 Rb3+ 57.Kg2 a3 58.Rxa3=) **52.Rxb4 axb4**

**53.Ke3** (53.b6 runs into

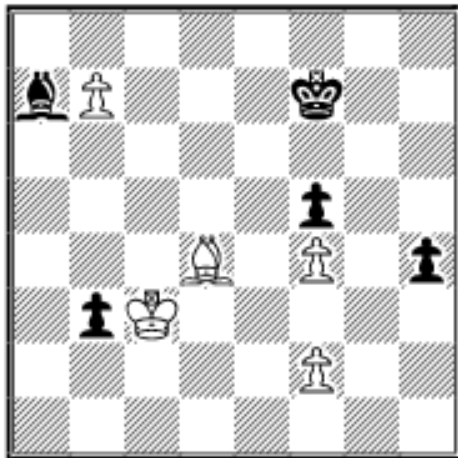
53...Bd4 54.Ke2 b3 55.Kd3 b2 56.Kc2 h5—+) **53...Be7!**

Karpov prepares to stop White's b-pawn as the endgame with queens, which arises after 53...b3 54.b6 b2 55.b7 b1Q 56.b8Q is far from clear. **54.Kd4 h5 55.b6 b3 56.b7 Bd6**

**57.Kc3** (57.Kd5 b2 58.Kxd6 b1Q 59.b8Q Qxb8+ 60.Bxb8 h4—+) **57...h4 58.Bd4 Bb8!** (58...Bxf4? 59.Ba7 Ke6

(59...Be5+? 60.Kxb3 Kg6 61.b8Q Bxb8 62.Bxb8 Kg5 63.f3 f4 64.Ba7 h3 65.Bg1 Kh4 66.Bh2+-) 60.b8Q Bxb8

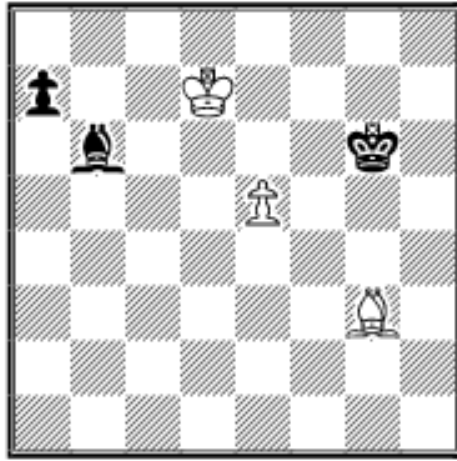
61.Bxb8 Kd5 62.f3 b2 63.Kxb2 Kd4=) **59.Be5 Ba7 60.Bd4**



**60...b2!! 61.Kc2** (61.Bxa7 b1Q 62.b8Q Qxb8 63.Bxb8 h3—+) **61...Bb8** and Portisch resigned

due to **62.f3 h3 63.Bg1 Bxf4**

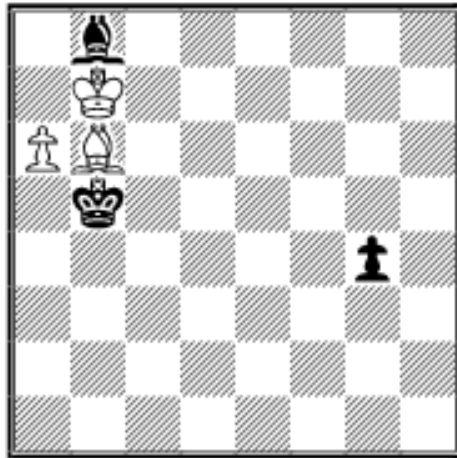
**64.Kxb2 h2—+**



**E21.04 A.Karpov (2710) - J.Timman (2590) Brussels 1987**

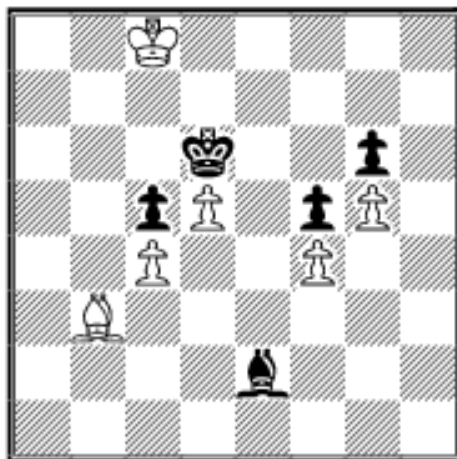
Timman uncorked the manoeuvre **63...Kf5!** (63...Bd4? 64.e6 Bf6 65.Bd6 Kf5 66.Be7 Bc3 67.Bh4 Bb4 68.Bg3+-) **64.e6 Bd8!! 65.Bd6 a5 66.Bc7 Bg5 67.Bxa5 Ke5** and a draw

was agreed as Black reaches the Centurini position.



**E21.05 A.Karpov (2770) - L.Ljubojevic (2600) Amber-blind 5th Monte Carlo 1996**

Karpov converted his advantage easily: **90.Bf2** (90.Bc7 Bxc7 91.a7 wins as well.) **90...Ka5 91.Bh4 Kb5 92.Be1 zugzwang 92...Ba7 93.Kxa7 Kc6 94.Kb8 1-0**

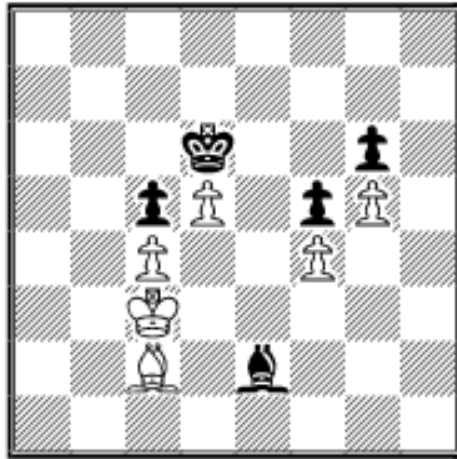


**E21.06 K.Darga - B.Spassky Amsterdam Interzonal 1964**

Klaus Darga had planned to play 66.Kd8? but at the last moment he noticed the ressource 66...Bxc4! 67.Bxc4 stalemate. So he had to go back in order to win: **66.Kb7 Bd3 67.Ka6 Bf1 68.Ka5 Bd3**

**69.Ka4 Bf1 70.Ka3 Be2 71.Kb2 Ke7 72.Kc3 Kd6 73.Bc2 Ke7 74.Bd3 Bd1** (74...Bxd3?! 75.Kxd3 Kd6 76.Kc3 Kc7 77.Kb3 Kb7 78.Ka4 Kb6 79.d6 Kc6 80.Ka5 Kxd6 81.Kb5+-) **75.Kd2 Bb3 76.Be2 Kd6 77.Kc3 Ba4 78.Bd3 Bd1**

**79.Kd2 Bb3 80.Kc1 Ke7 81.Kb2 Bd1 82.Bc2 Be2 83.Kc3 Kd6**



How to win this position?

**84.Ba4 Ke7**

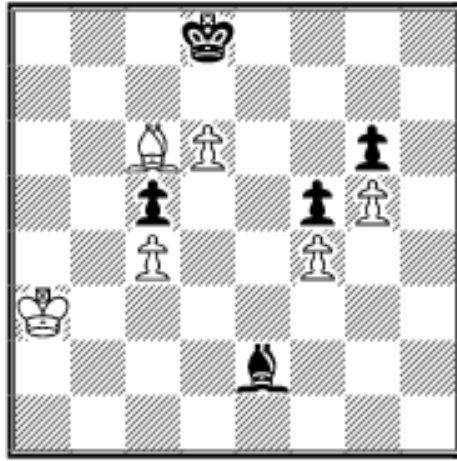
I After 84...Bf3 a lot of manoeuvring is required to break Black's tenacious resistance:

85.Be8 Bh5 86.Kb3 Ke7  
87.Bb5 Bd1+ 88.Ka3 Be2  
(88...Bc2 89.d6+ Kxd6 90.Be8

Bd3 91.Kb3 Be2 92.Bxg6 Bd1+ 93.Ka3 Ke6 94.Be8 Bc2  
95.Ba4 Bd3 96.Bb3 Be2 97.Ka4 Bh5 98.Bc2 Bg6 99.Kb5  
Kd6 100.Bd3 Bh7 101.Kb6 Bg6 102.Kb7 Kd7 103.Bc2  
Bh7 104.Ba4+ Kd6 105.Kc8 Bg8 106.Bb5 Be6+ 107.Kd8  
Bf7 108.Bd7+-) 89.Ka4 Bf3 90.Ka5 Be2 91.Kb6 Kd6  
92.Be8 Bxc4 (92...Bh5 93.Bf7 Ke7 94.Kc7+-) 93.Bxg6  
Bd3 (93...Bxd5 94.Bxf5 c4 95.Kb5 Bf7 96.Kb4 Kd5  
97.Kc3 Bg8 98.Bb1 Bf7 99.Bh7 Bh5 100.g6 Ke6 101.g7  
Bf7 102.Kd4 c3 103.g8Q Bxg8 104.Bxg8+ Kf5 105.Ke3  
c2 106.Bh7+-) 94.Bh7 Kxd5 (94...c4 95.g6 Be4 96.g7  
Bxd5 97.g8Q Bxg8 98.Bxg8 c3 99.Bb3+-) 95.g6 Kd4  
96.Bg8 c4 97.g7 c3 98.Bb3 Bc4 (98...c2 99.Bxc2 Bc4  
100.Bxf5+-) 99.Bxc4 c2 100.g8Q c1Q 101.Qd5+ Ke3  
102.Qe5+ Kf3 103.Bd5+ Kg3 104.Qg7+ Kf2 105.Qg2+  
Ke3 106.Qh3+ Kd4 107.Qh8+ Kd3 108.Qe5+-

II 84...Bh5?! 85.Kd2 Bf3 86.Bd1 Be4 87.Bh5+-

**85.Bb5 Kd8?! 85...Bd1** was tougher as White has to win as in the line 84...Bf3 **86.d6! Bf3 87.Kb3 Bd1+ 88.Ka3 Bc2 89.Bc6 Bd1 90.Ba4 Be2 91.Bb5 Bd1 92.Bc6 Be2**



**93.Ka4!** the point. White is willing to sacrifice the pawn c4 to penetrate with his king  
**93...Bxc4 94.Ka5 Be2** (94...Bf7 95.Kb5 c4 96.Kb4 Kc8 97.Bb5 Kb7 98.Bxc4 Bxc4 99.Kxc4 Kc6 100.d7 Kxd7 101.Kd5 Ke7 102.Ke5 Kf7 103.Kd6+-)  
**95.Bb5 c4 96.Ba4 1-0**

Copyright 2002 Karsten Müller. All rights reserved.

*This column is available in **ChessCafe Reader** format. Click [here](#) for more information.*



[TOP OF PAGE](#)



[HOME](#)



[COLUMNS](#)



[LINKS](#)



[ARCHIVES](#)



[ABOUT THE  
CHESS CAFE](#)

[\[The Chess Cafe Home Page\]](#) [\[Book Reviews\]](#) [\[Bulletin Board\]](#) [\[Columnists\]](#)  
[\[Endgame Studies\]](#) [\[The Skittles Room\]](#) [\[Archives\]](#)  
[\[Links\]](#) [\[Online Bookstore\]](#) [\[About The Chess Cafe\]](#) [\[Contact Us\]](#)

Copyright 2002 CyberCafes, LLC. All Rights Reserved.

"The Chess Cafe®" is a registered trademark of Russell Enterprises, Inc.