



## Bishops and Overgrown Pawns

I decided to return to the topic of same-coloured bishop endings, which was last dealt with in Endgame Corner 21 (see the [ChessCafe Archives](#)).

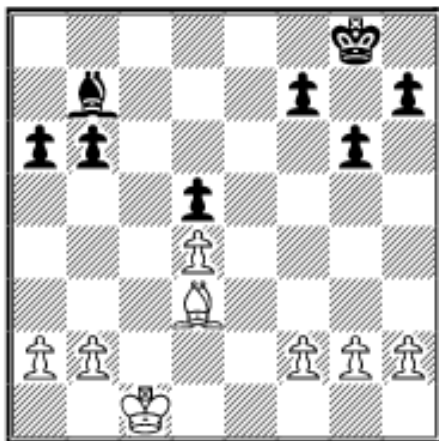
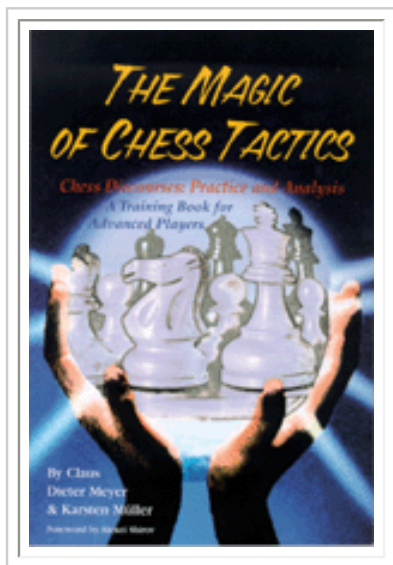
### One Weakness is Usually Not Enough to Win

**45.01 J.Lopez Martinez (2474) - P.San Segundo Carrillo (2528)**  
ESP-ch Gp B Cala Mencia, Mallorca 2001

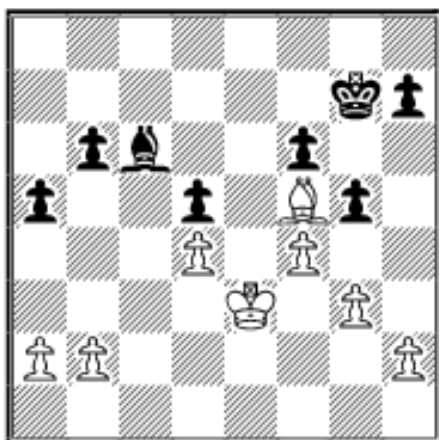
COLUMNISTS

## Endgame Corner

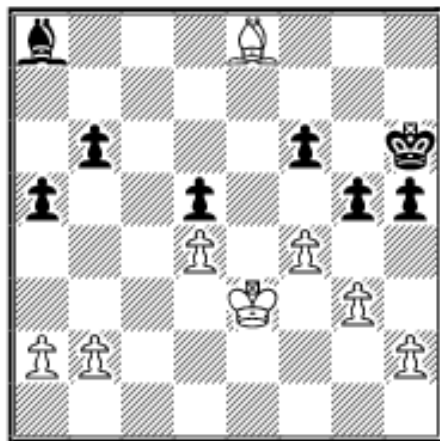
Karsten Müller



Black should be able to draw with careful defense: **27...a5!? 28.Kd2 Bc6 29.Ke3 g5 30.Bf5 Kg7 31.f4 f6 32.g3** (see next diagram)



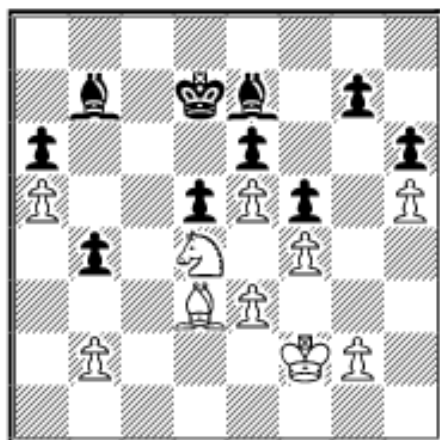
**32...h5?! this pawn can easily become a decisive second weakness. 32...h6=** was called for. **33.Be6 Kh6?** misguided “activity.” 33...Kf8 draws easily: 34.fxg5 fxg5 35.h4 Ke7 36.Bh3 Kf6= (Tsesarsky in CBM 86) **34.Bf7!** eyeing both weaknesses **34...Bb7** (34...h4? doesn’t help: 35.gxh4 gxh4 36.Kf3+-) **35.Be8 Ba8** (see next diagram)



The way to make progress now is by restricting Black's poor bishop: **36.a3 Bb7 37.b4 axb4 38.axb4 Ba6 39.b5** if White's bishop were on d7 it would be over. As matters stand Black can still fight: **39...Bc8 40.Bf7 Bb7?** passivity is fatal. 40...Bd7 offered tough resistance. **41.fxg5+ Kxg5** (41...fxg5 42.Kf3 Ba8 43.Be8 Bb7 44.Bc6+-) **42.Be6 f5 43.h4+ Kg4 44.Kf2 1-0** and Black resigned as **44...Ba8 45.Bc8** leads to a deadly zugzwang.

In the next examples I start earlier in the game:

**45.02 Wang Lei (2473) - I.Krush (2380)**  
USA-China Summit Seattle 2001

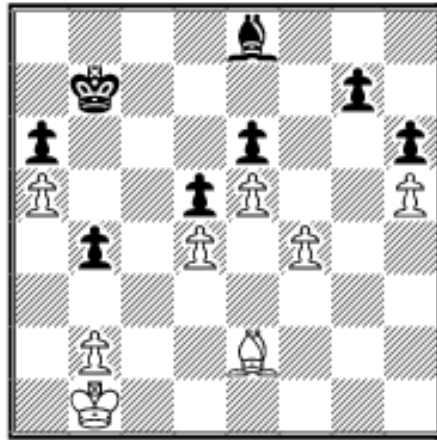


Black has many weaknesses, but the decisive one is the far advanced b4-pawn: **34.Be2 Bc5 35.g4 fxg4 36.Bxg4 Bxd4 37.exd4 Bc8 38.Ke3**

38.f5 wins as well: 38...Ke7 (38...exf5? 39.Bxf5+ Kc7 40.Bxc8 Kxc8 41.Kf3 Kd7 42.Kg4 Ke6 43.Kf4 b3 44.Kg4 Kf7 45.Kf5 Ke7 46.Kg6 Kf8 47.e6+-) 39.fxe6 Bb7 (39...Bxe6 40.Kg3 Bf7 41.Be2 Kd7 42.Bxa6 Bxh5 43.Bb5+ Kc7 44.e6+-) 40.Ke3 Bc6

41.Be2 Bb7 42.Kd2 Kxe6 43.Bg4+ Kf7 44.Kc2+-

**38...Kc6 39.Be2** no counterplay! **39...Kb7 40.Kd2** now the time is ripe **40...Bd7 41.Kc1 Be8 42.Kb1** (see next diagram)

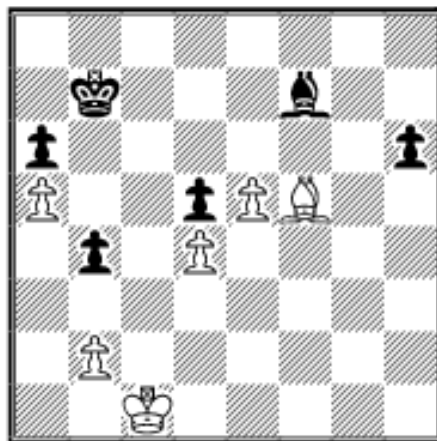


**42...Bd7?**

42...g6 was much more tenacious, e.g.  
43.Bg4 Bf7 44.hxg6 Bxg6+

A) 45.Ka2? is met by 45...Bf5 46.Bh5 Kc6  
47.Be8+ Kc7 48.Kb3? (the bishop must  
return: 48.Bh5= ) 48...Bg4 49.Kxb4 h5 with  
strong counterplay.

B) 45.Kc1 Bf7 (45...Bf5? 46.Bxf5 exf5  
47.Kd2 and White wins easily.) 46.f5 exf5 47.Bxf5 (see next diagram)

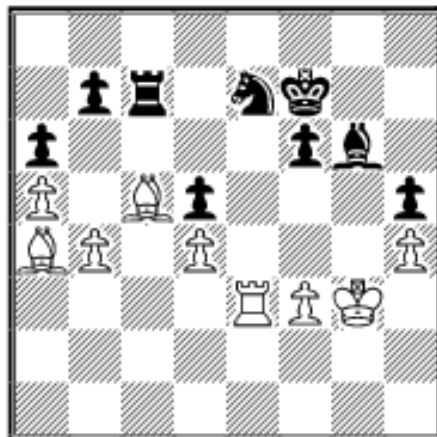


and the win is still far away.

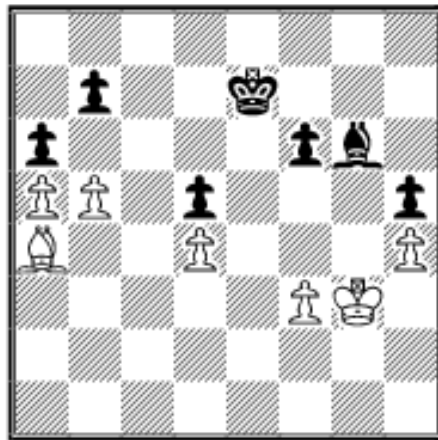
**43.Ka2 Ba4 44.Bg4 Kc6 45.Bxe6 Bd1  
46.Bf7 Kb5 47.e6 1-0**

Russian grandmaster Konstantin Aseev, who  
unfortunately passed away recently, had  
superb endgame technique:

**45.03 K.Aseev (2577) - A.Vaulin (2540)**  
RUS-ch 54th Elista 2001



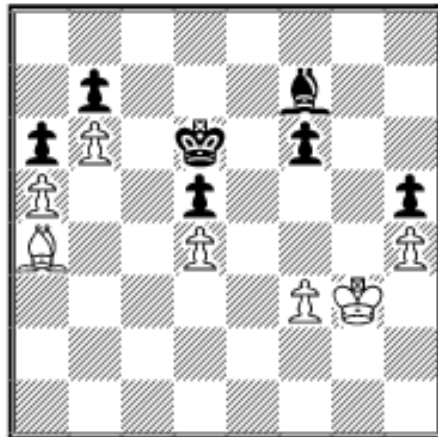
Aseev had to calculate far in advance to  
convince himself that **48.Bxe7! Rxe7**  
**49.Rxe7+ Kxe7 50.b5!** (see next diagram)



wins as Black has three light-square weaknesses. **50...axb5**

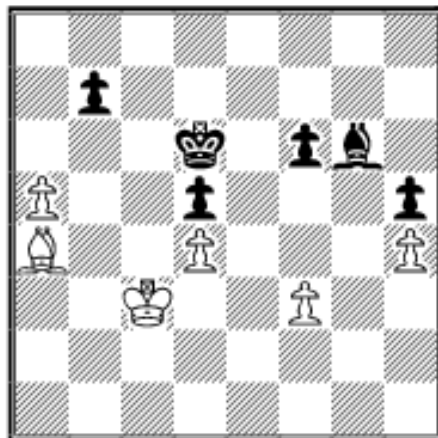
50...Be8?! 51.bxa6 bxa6 52.Bxe8 Kxe8  
53.Kf4 Ke7 54.Kf5 Kf7 55.f4+- (Huzman in  
CBM 83)

50...Kd6 51.b6 Bf7 (see next diagram)



and now a triangulation wins the decisive  
tempo: 52.Kg2 Bg6 53.Kf2 Bf7 54.Ke3 Bg6  
55.Kf4 with a deadly zugzwang, e.g.  
55...Bd3 (55...Bf7 56.Kf5 Ke7 57.Bc6 Be6+  
58.Kg6+-; 55...Ke6 56.Bc6 bxc6 57.b7+-)  
56.Be8+-

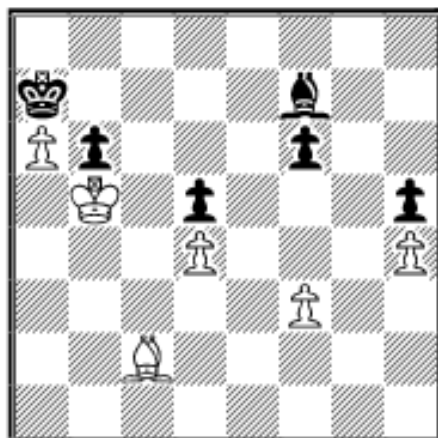
**51.Bxb5 Kd6 52.Kf4** the start of a very long  
march into the heart of the enemy camp.  
**52...Kc7 53.Ba4 Kd6 54.Ke3 Kc7 55.Kd2**  
**Kd6 56.Kc3** (see next diagram)



**56...Bf7**

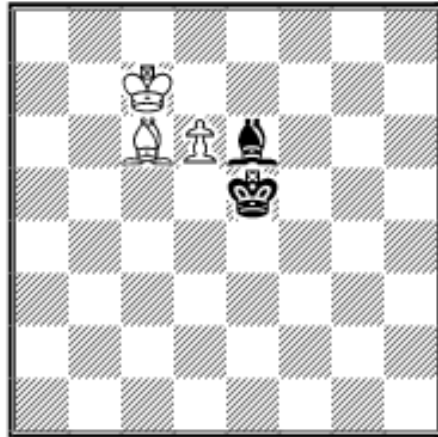
passively waiting does not save the day:  
56...Kc7 57.Kb4 Kd6 58.Bb5 Bf7 59.Be2  
Be8 60.Bd3+- with a decisive zugzwang  
according to Huzman.

**57.Bc2 Kc7 58.Kb4 b6** something must be  
done to avoid the zugzwang. **59.a6 Kb8**  
**60.Kb5 Ka7** (see next diagram)



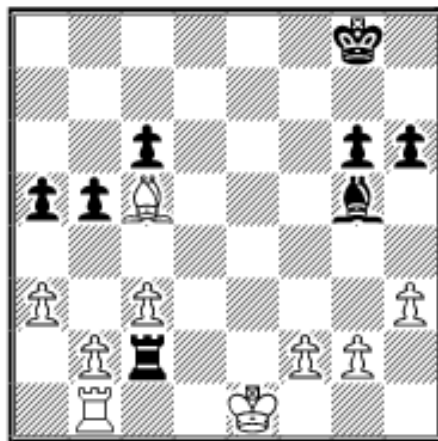
**61.Kc6!!** Black's days are numbered.  
**61...Kxa6 62.Kd7 Kb5 63.Ke7 Bg8**  
**64.Kxf6 Kc4 65.Ke5 b5 66.Bg6 b4**  
**67.Bxh5 b3** (67...Bh7 68.Bf7 b3 69.Bxd5+  
Kc3 70.Bxb3+-) **68.Bg6 b2 69.Bb1 Bf7**  
**70.f4 Kc3 71.f5 Kd2 72.f6 Ke3 73.h5 Bxh5**  
**74.Kxd5 Bf7+** (74...Kf4 75.Ke6 Kg5 76.d5+-  
) **75.Ke5 Bc4 76.d5 Bd3 77.f7! Bxb1**  
**78.f8Q Bc2** (78...Kd2 79.Qb4+ Kc2  
80.Qa3+- (Huzman) and the d-pawn will  
decide the day.) **79.Qa3+ 1-0**

## Exercises (Solutions next month)



**E45.01** *P.Barata (2000) - J.Costa (2021)*  
 POR-ch57 Lisbon 2001

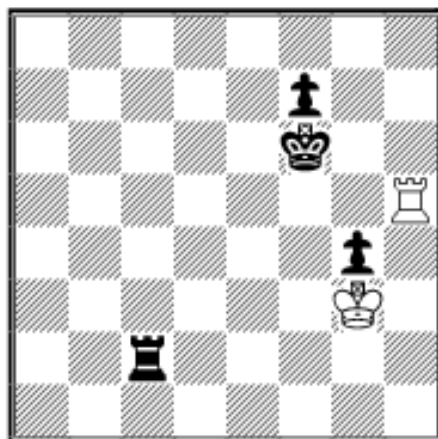
Can Black to move draw?



**E45.02** *C.Sandipan (2452) - K.Guseinov (2527)*  
 Moscow Aeroflot op 2002

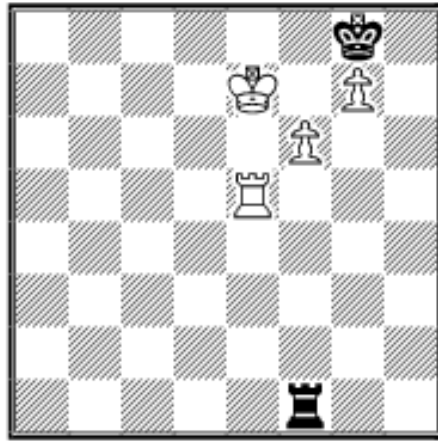
White to move and win.

## Solutions to last month exercises



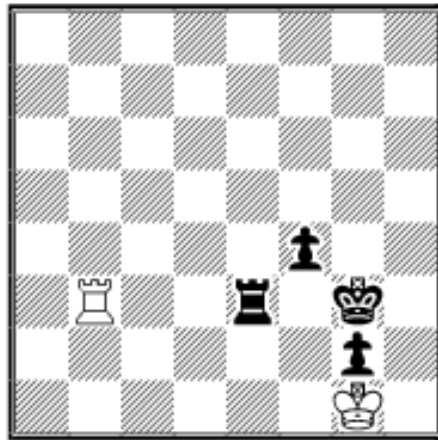
**E44.01** *E.Sveshnikov (2595) - D.Sermek (2510)*  
 Nova Gorica op 1998

Black blundered with **47...Kg6?** (47...Rc4 followed by Kg6 and f5 wins.) **48.Rg5+!!**  
 1/2-1/2



**E44.02 P.Tjornsted - K.Hovmoller (2170)**  
Politiken Cup Copenhagen 2000

**122.Rh5??** was a blunder. 122.Re2 is one way to win: 122...Rf3 123.Rc2 Re3+ 124.Kd6 Re8 (124...Kf7 125.Rc8+-) 125.Kd7 Kf7 126.Rc8+- **122...Rxf6** ½-½



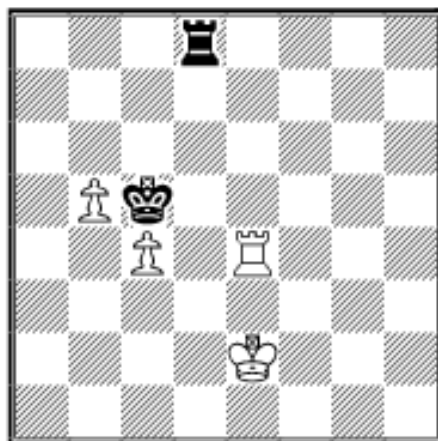
**E44.03 K.Richter (2217) - C.Baeder**  
Baden VLS 0102 2001

White's clever stalemate defense proved too much for Black and he agreed to a draw after **60...Kf3?!** but the position is still won: **61.Rb1 Kg3 62.Rb3 Kg4+**

60...Rf3? blows it because of 61.Ra3 Re3 (61...Kg4 62.Ra8=) 62.Rxe3+ fxe3 stalemate

60...Kg4! is quickest: 61.Rxe3 fxe3 62.Kxg2 Kf4 63.Kg1 Kg3 64.Kf1 Kf3 65.Ke1 e2-+

**E44.04 E.Danielian (2411) - N.Kosintseva (2336)**  
EU-ch 3rd (Women) Varna 2002



Just moving up and down on the d-file is insufficient. Black has to construct a cut-off on the 5th rank: **75...Rd7?**

75...Kb4! 76.Ke3 Rc8 (the original 76...Kc3 77.Kf4 Kd3= works as well.) 77.Kf4 Rc5=

**76.Rh4?**

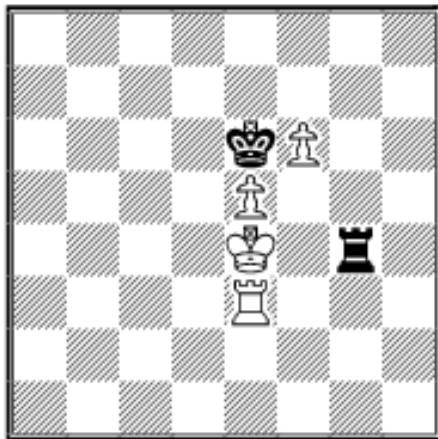
White must cross the 5th rank immediately: 76.Ke3 Rd8 77.Kf4 Rh8 78.Kf5 Rf8+ 79.Kg5 Kd6 80.Rd4+ Kc5 81.Rh4 Rf7

82.Rf4 Re7 83.Kf6 Re8 84.Kg6 and White wins similar to 44.01 (the [ChessCafe Archives](http://www.chesscafe.com/archives/)).



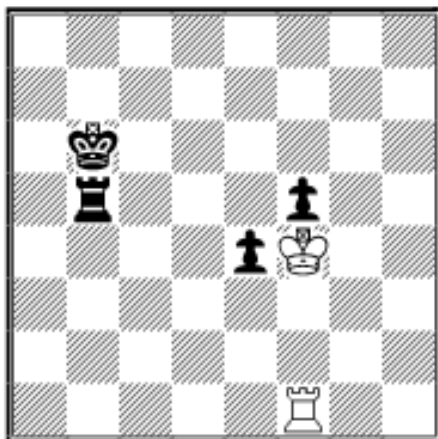
76...Rd8 77.Ke3  $\frac{1}{2}$ - $\frac{1}{2}$ **E44.05 M.Rockenschaub (2205) - T.Pfaffel (2070)**

AUT-chT 96/97



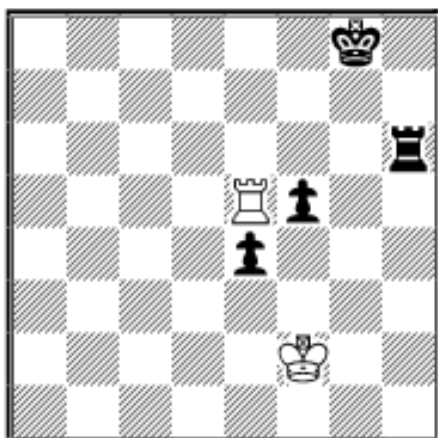
White has to win a tempo: 87.Kf3 Ra4 88.Re4 and the blockade will be broken, e.g. 88...Ra1 89.Kf4 Rg1 90.Ra4 Rf1+ 91.Kg5 Rg1+ 92.Kh6 Rg2 (92...Kxe5 93.f7 Rf1 94.Kg7 Rg1+ 95.Kf8+-) 93.Ra6+ Kf7 94.Ra7+ Ke6 95.f7 Rf2 96.Kg7 Rg2+ 97.Kf8+-

The game continued **87.Kd3?** and a draw was agreed because of **87...Ra4 88.Ke2 Ra8 89.Kf3 Kf5!=**

**E44.06 D.Zav - U.Blass**

Israel ch 3/4-Final corr 2000

Black wins easily with **63...Rb3!** as White is completely defenseless, because he has to prevent ...Rf3+.

**E44.07 M.Kilic - A.Can (1983)**

TUR-ch Kusadasi 2004

Black has a nice tactical solution here:

**66...Rf6?** (66...Rh5! and White can't set up a blockade: 67.Re7 (67.Ke3?! f4+ 68.Kxe4 Rxe5+ 69.Kxe5 f3+-) 67...Kf8 68.Ra7 f4 69.Ra4 Re5 70.Ke2 Ke7 71.Ra6 Rb5 72.Ra4 Rb2+ 73.Ke1 Rb1+ 74.Ke2 f3+ 75.Kf2 Rb2+ 76.Kg3 Re2+-) **67.Ke3 Kg7 68.Kf4** and the game was drawn later.



[TOP OF PAGE](#)



[HOME](#)



[COLUMNS](#)



[LINKS](#)



[ARCHIVES](#)



[ABOUT THE  
CHESS CAFE](#)

[\[Chess Cafe Home Page\]](#) [\[Book Review\]](#) [\[Bulletin Board\]](#) [\[Columnists\]](#)  
[\[Endgame Study\]](#) [\[The Skittles Room\]](#) [\[Archives\]](#)  
[\[Links\]](#) [\[Online Bookstore\]](#) [\[About The Chess Cafe\]](#) [\[Contact Us\]](#)

Copyright 2004 CyberCafes, LLC. All Rights Reserved.

"**The Chess Cafe®**" is a registered trademark of Russell Enterprises, Inc.