



Long Marches with the King

While proofreading the second edition of Mark Dvoretsky's excellent *Endgame Manual*, I came upon the following very interesting problem.

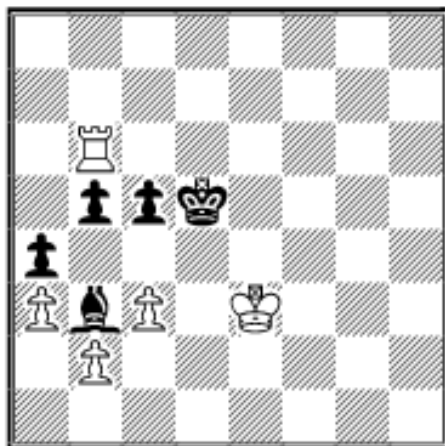
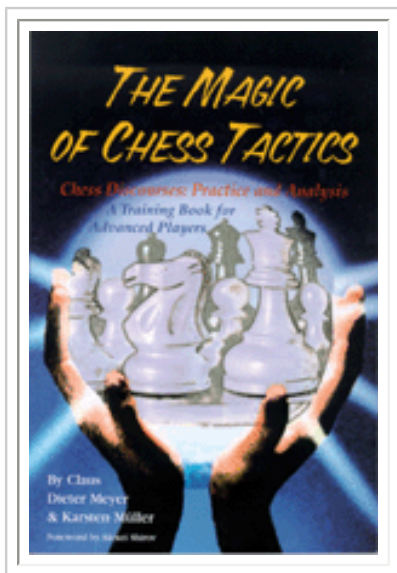
56.01 Y.Balashov - A.Shirov

Klaipeda ch-USSR 1988

COLUMNISTS

Endgame Corner

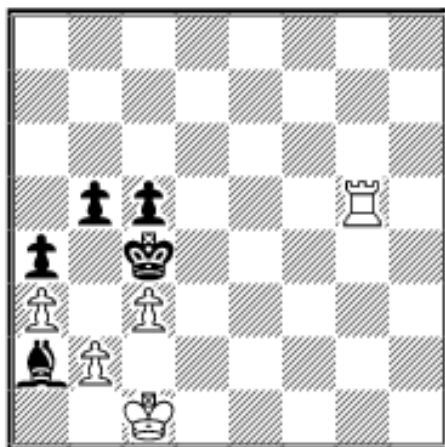
Karsten Müller



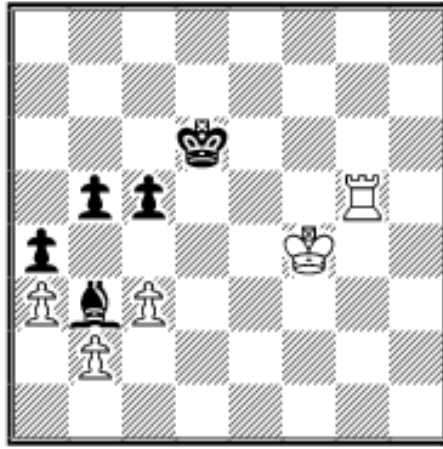
Dvoretsky claimed that Black can draw with active defense, but I was very skeptical. Yet, despite analyzing it for about an hour, I did not manage to find convincing proof. Fortunately, FM Stefan Sievers came to my rescue at a training session in Hamburg.

51...Kc4? this active move loses quickly because of the sharp endgame weapon zugzwang.

51...Bc4! is much more tenacious: 52.Rf6 Ke5 after (52...Ba2 53.Rf1 Ke5 (53...Kc4 54.Kd2 Kb3 55.Kc1 b4 56.cxb4 cxb4 57.Rf3+-) 54.Rh1 Kd5 55.Kd3 Bc4+ 56.Kd2 Ba2 57.Rh5+ and White either reaches the desired cut off or wins because of zugzwang: 57...Kc4 58.Kc1 Bb3 59.Rg5 Ba2



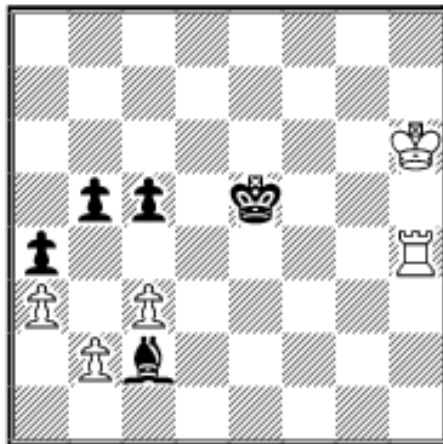
60.b4 axb3 (60...Kxc3 61.bxc5+-) 61.Kb2+-) 53.Rg6 Bd5 54.Rg5+ Kd6 55.Kf4 Bb3



I had proved that this cut off can be forced, but did not find a way to break through since Black's counterplay is always dangerous. But Sievers just suggested to go one rank back with the cut off and then to march the king via h6-g7-f8 into Black's camp. A really remarkable idea!

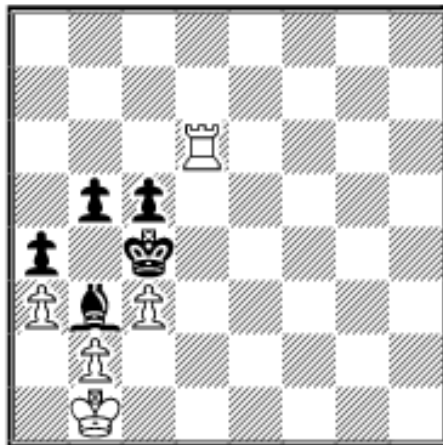
56.Rh5 (56.Kg4 Bd1+ 57.Kf5? is too slow: 57...Kd5 58.Rg2 Kc4 59.Rd2 Bf3 60.Rf2 (60.Ke6 Kb3 61.Rf2 Bb7 62.Kd6 b4

63.Kxc5 bxc3 64.bxc3 Kxa3 65.c4 Kb3 66.Rf7 Be4 67.Re7 Bd3 68.Kd4 Bf5 69.Rb7+ Kc2=) 60...Bb7 61.Ke5 Kb3 62.Kd6 b4 63.Kxc5 bxc3 64.bxc3 Kxa3=) 56...Bc2 57.Rh4 Kd5 58.Kg5 Ke5 59.Kh6



and Black is helpless against the march of White's monarch, e.g. 59...Bd3 (59...Kf6 60.Rh5 Bf5 61.Rg5+-) 60.Kg7 Kd5 61.Kf6 Kd6 62.Rh5 Be4 63.Kf7 Bf3 64.Rg5 Be4 65.Ke8 Bd3 66.Kd8+-

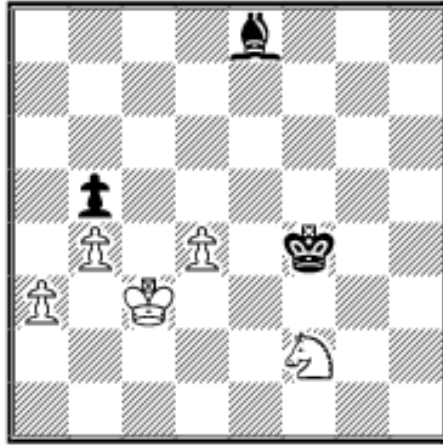
52.Kd2! and Shirov had seen enough: **52...Ba2 53.Kc1 Bb3 54.Rd6 Ba2 55.Kc2 Bb3+ 56.Kb1**



Now Black is dominated and loses because of zugzwang.

I want to thank Mark Dvoretsky for allowing me to share his insights. Another example of a long march with the king is in the solution of exercise E55.05 below.

Solutions to Last Month's Exercises

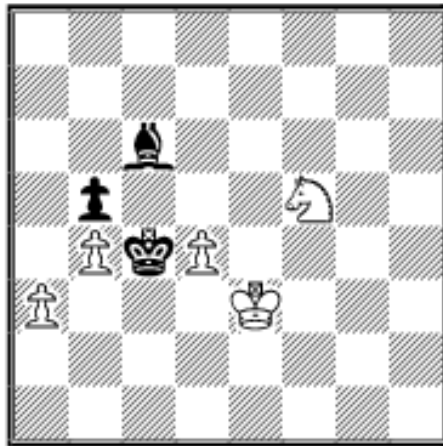


E55.01 Analysis of A.Karpov - G.Kasparov

World Championship 31st-KK1, Moscow 1984

White wins with the surprising **77.d5!!** because of **77...Ke5** (77...Kf3 78.Kd4 Kxf2 79.Ke5 Ke3 80.d6 Kd3 81.Ke6 Kc4 82.d7 Bxd7+ 83.Kxd7 Kb3 84.Kc6 Ka4 85.Kc5+-) **78.Ng4+ Kf5** (78...Kd6 79.Kd4 Bf7 80.Nf6 Bg6 81.Ne4++-; 78...Kxd5

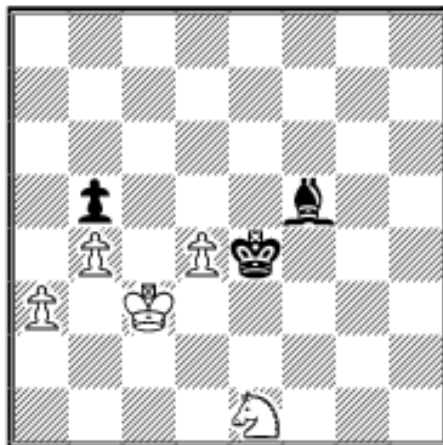
79.Nf6+-) **79.Kd4 Kxg4 80.Ke5+-**



E55.02 Analysis of A.Karpov - G.Kasparov

World Championship 31st-KK1, Moscow 1984

Speelman and Tisdall indicated that **68.Kf4!** wins: **68...Kb3 69.Ke5 Kxa3 70.Kd6 Be4 71.Ng3+-**



E55.03 Analysis of A.Karpov - G.Kasparov

World Championship 31st-KK1, Moscow 1984

Black's pieces are only slightly misplaced, but it's enough for White to take advantage of the moment: **75.a4! bxa4 76.Nc2 Bd7**

76...Be6 77.b5 Kd5 78.Ne3+ Kd6 79.Kb4 Bb3 80.Nf5+ Kd5 81.Ne7+ Kd6 82.b6 Bc2 83.Kc3 Bd1 84.d5 Bg4 85.Kb4 Bd7 86.Ka3 Bb5 87.Nf5+ Kd7 88.Kb4 Bd3 89.Ne3 Ba6 90.Kxa4+-

76...Kd5 77.Ne3+ Ke4 78.Nxf5+-

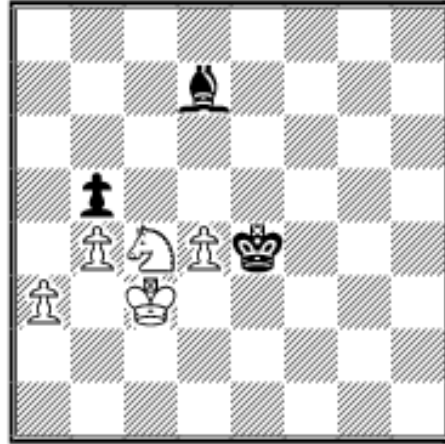
76...Bc8 77.Kc4 Kf5 78.b5 Ke6 79.Kc5 Bb7 80.Kb4 Kd5 81.Kc3 Ke4 82.Na3 Kd5 83.Nc4 Ke6 84.Ne3+-

76...Bg4 77.Kc4 Bd1 78.Na3 Kf5 79.Kd5 Bf3+ 80.Kd6 Ke4 81.Kc5 Kf5
82.d5+-

77.Kc4 Be6+ 78.Kc5 Kd3

78...Bd5 79.b5 Ba8 80.Na3 Kf5 81.Nc4 Ke6 82.Kb4 Bd5 83.Ne3 Bb3 84.d5+
Kd6 85.b6 Kd7 86.Nc4+-

79.Na3 Kc3 80.b5 Kb3 81.b6 Bc8 82.Nc4+-



E55.04 Analysis of A.Karpov - G.Kasparov

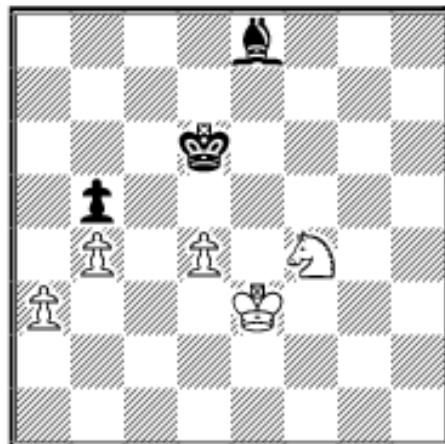
World Championship 31st-KK1, Moscow 1984

Black has to act very precisely: **73...Bc6!**

73...bxc4? 74.Kxc4 Kf5 75.b5 Ke6 76.Kc5
Ke7 77.a4 Kd8 78.a5 Kc8 79.d5 Kb7
80.a6+ Kb8 81.b6+-

73...Kf5? 74.Nb6 Be8 75.Nd5 Bd7 (75...Bh5 76.Nc7 Be2 77.a4 bxa4 78.b5+-)
76.Kd3 Ke6 77.Nc3+-

74.Ne5 (74.a4?! bxc4=) **74...Be8** (74...Bb7? 75.a4 bxa4 76.Nc4 Kd5 77.b5+-)
75.Ng4 Kf5 76.Nf2 Ke6 77.Ne4 Bg6 78.Nc5+ Kd5=



E55.05 Analysis of A.Karpov - G.Kasparov

World Championship 31st-KK1, Moscow 1984

It seems that White can't win since he
can't transfer the knight to c3: **73.Ke4**
Bc6+ 74.Kf5

74.Kd3 Bd7 75.Ng2 Bf5+ 76.Kd2 Bg6
77.Ne3 is also possible, but Black's king

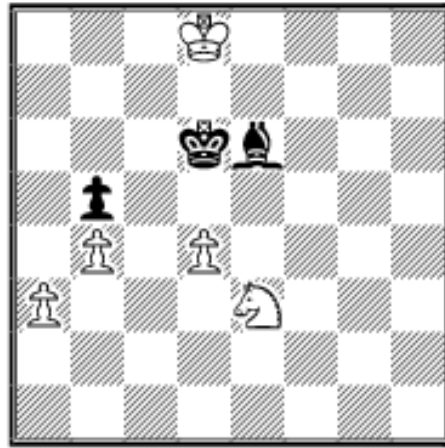
will be activated, if the knight is transferred to c3.

74...Bf3 75.Kf6 Bg4 76.Kf7 Bf5 77.Ke8 Bd7+

77...Bg4? 78.Kd8 and Black is in fatal zugzwang: 78...Bf5 79.Ne2 Kd5

(79...Bh3 80.Nc3 Bd7 81.Ne4+ Kc6 82.d5+-) 80.Nc3+ Kc4 (80...Kxd4 81.Nxb5+ Kd3 82.Nd6+-) 81.Nxb5 Kxb5 82.d5 Kb6 83.d6+-

78.Kd8 Bg4 79.Ng2 Bh3 80.Ne3 Be6



and White can't make progress, e.g. **81.d5** (81.Nd1 Kd5 82.Nc3+ Kxd4 83.Nxb5+ Kc4=) **81...Bh3 82.Ke8 Bd7+ 83.Kf7 Bh3 84.Kf6 Bc8 85.Kg5 Ke5=**



[TOP OF PAGE](#)



[HOME](#)



[COLUMNS](#)



[LINKS](#)



[ARCHIVES](#)



[ABOUT THE
CHESS CAFE](#)

[\[Chess Cafe Home Page\]](#) [\[Book Review\]](#) [\[Columnists\]](#)
[\[Endgame Study\]](#) [\[The Skittles Room\]](#) [\[Archives\]](#)
[\[Links\]](#) [\[Online Bookstore\]](#) [\[About The Chess Cafe\]](#) [\[Contact Us\]](#)

Copyright 2005 CyberCafes, LLC. All Rights Reserved.

"**The Chess Cafe®**" is a registered trademark of Russell Enterprises, Inc.