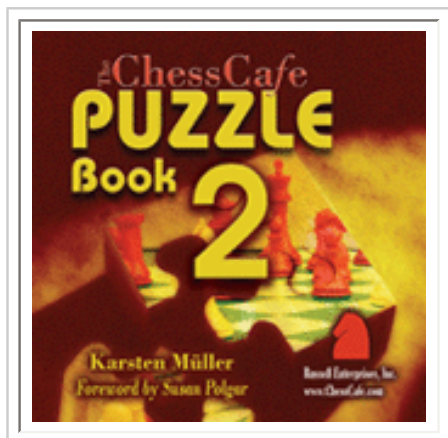




COLUMNISTS

Endgame Corner

Karsten Müller



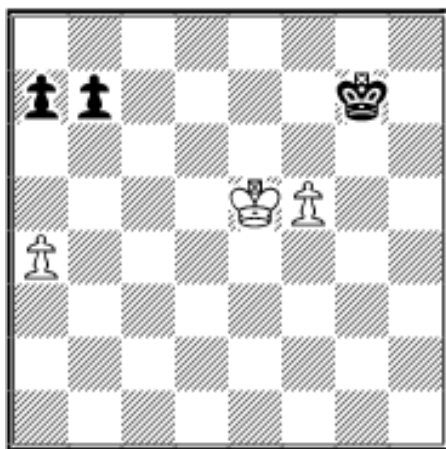
Calculation Training

Pawn endgame exercises are well suited to train your ability to calculate.

76.01 I.Ivanisevic (2602) – D.Solak (2564)

ch-SRB, Vrsac 2007

Black has two ways to draw. He can play 52...b6 or 52...Kf7. Calculate both lines to the end until Black's king has reached the saving c8-square, where it either imprisons White's king in front of its a-pawn or it reaches salvation on the a8-square!



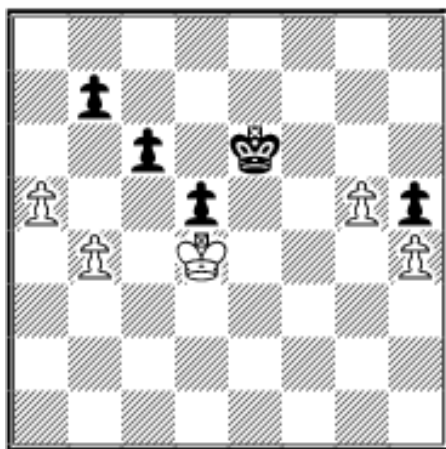
This was quite easy: **52...b6**

52...Kf7 53.Kd6 Kf6! 54.Kc7 Kxf5! 55.Kxb7 a5!
56.Kb6 Ke6! 57.Kxa5 Kd7! 58.Kb6 Kc8!=.

**53.Kd6 Kf6! 54.Kc7 Kxf5! 55.Kb7 Ke6 56.Kxa7
Kd7! 57.Kxb6 Kc8! ½–½**

The next position is more complicated.

76.02 L.Gutman (2464) – A.Schaffarczyk (2133)
Sander Schloss Open, Werther 2007



At first sight it may seem that White can not win because of Black's passed d-pawn. But another look reveals the undermining option b4-b5. Calculate this to the end!

42.Kc5 Ke5 43.b5 cxb5 44.g6! Kf6 45.Kxd5!

White wins the race by one tempo.

**45...b4 46.Kc4! b3 47.Kxb3! Kxg6 48.Kc4 Kf5
49.Kc5 Kg4 50.Kb6! Kxh4 51.Kxb7! Kg3 52.a6
h4 53.a7 h3 54.a8Q Kg2**

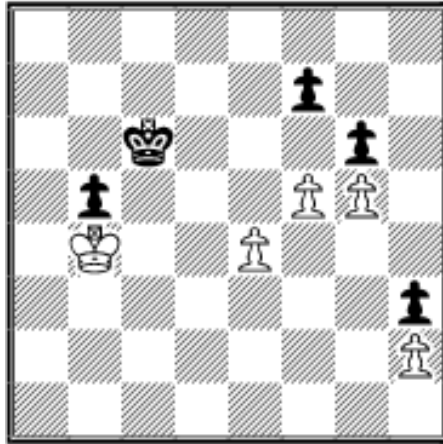
54...h2 55.Kb6 Kf2 56.Qh1!+–.

55.Qa2+ Kg1 56.Qb1+ Kg2 57.Qc2+ Kg1 58.Qd1+ 1–0

In the next position it is not even clear as to who is better.

76.03 Y.Pelletier (2589) – F.Vallejo Pons (2679)

Bundesliga 2006-7, Baden Baden (14) 2007



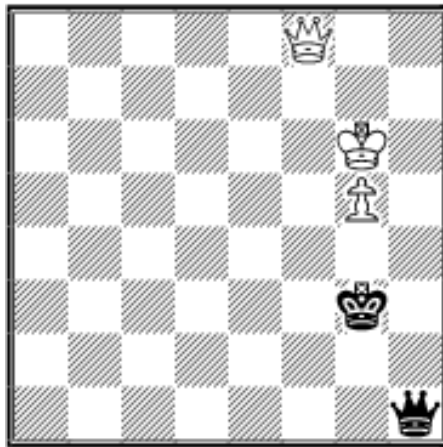
Is Black's outside passed pawn better than White's kingside majority or vice versa? First find the candidate moves and then calculate White's most promising option!

47.fxg6?!

This leads directly to a draw.

47.f6!? would have given Pelletier excellent practical winning chances, but theoretically the position remains drawn, as the endgame tablebase confirms: 47...Kd6 (47...Kb6? is punished by the

typical breakthrough: 48.e5! Kc6 49.e6!+-) 48.Kxb5 Ke5! 49.Kc5 Kxe4! 50.Kd6 Kf3! 51. Ke7 Kg2! 52.Kxf7 Kxh2! 53.Kxg6 Kg3! 54.f7 h2! 55.f8Q h1Q!



White has good practical winning chances, but the queen endgame is drawn with optimal play from both sides.

47.e5?! gxf5 48.e6! Kd6! 49.exf7! Ke7! 50.Kxb5 Kxf7 51.Kc4 Kg6 52.Kd3 Kxg5 53.Ke3 Kg4 54. Kf2 Kf4 55.Ke2! Ke4 56.Kf2! Kd3 57.Kf3! Kd2 58.Kf2! f4 59.Kf3 Ke1 60.Kxf4 Kf2 61.Ke4! Kg2 62.Ke3! Kxh2 63.Kf2! =.

47...fxg6! 48.e5 Kd5 49.Kxb5 Kxe5 50.Kc4 Kf4 51.Kd3 Kxg5

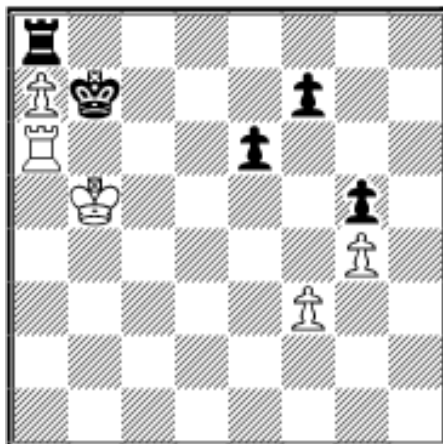
51...Kf3 52.Kd2 Kg2 53.Ke2 Kxh2 54.Kf2! =.

52.Ke3 Kg4 53.Kf2 Kf4 54.Kg1 g5 55.Kh1 g4 56.Kg1 Kf3 57.Kh1 Kf2 ½-½

In the final example you have to calculate very deeply.

76.04 B.Vuckovic (2551) – D.Pikula (2513)

ch-SRB, Vrsac 2007



White won by simplifying into a pawn endgame. His final point is quite profound.

63.Rb6+ Kxa7

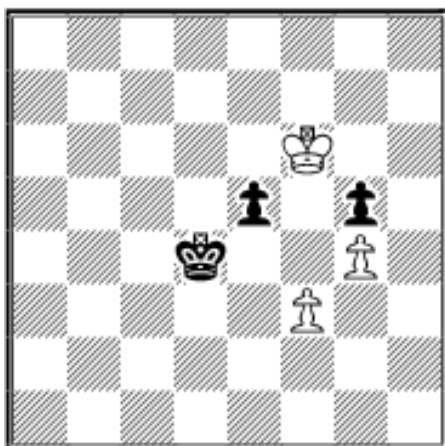
63...Kc7 64.Ka6+-.

64.Ra6+! Kb7 65.Rxa8! Kxa8 66.Kc6 Ka7 67. Kd6 Kb6 68.Ke7 Kc5 69.Kxf7 e5



69...Kd6 70.Kf6 e5 71.Kxg5+–.

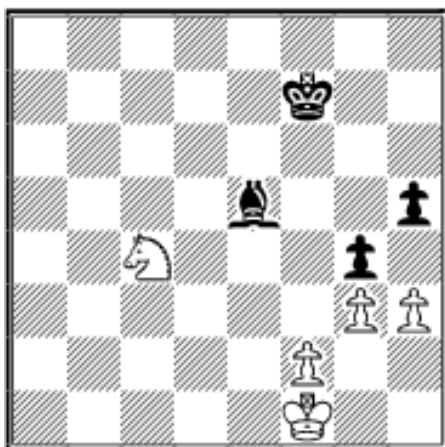
70.Kf6 Kd4



Now White finally showed his point.

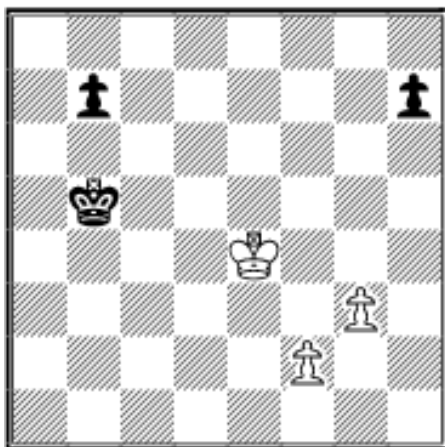
71.Kf5!! 1–0

Exercises (Solutions next month)



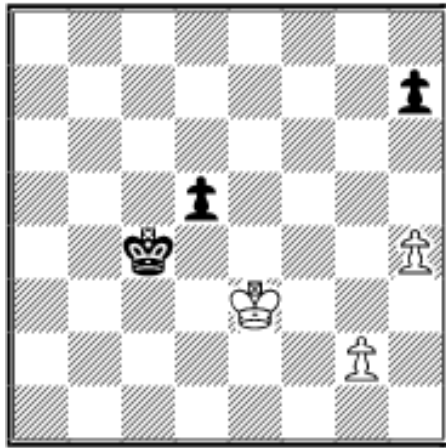
E76.01 A.Gasthofer (2453) – A.Berelovich (2556)
8th ch-Euro, Dresden 2007

Can Black save himself?



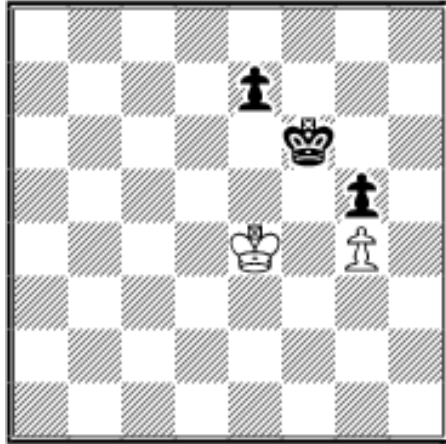
E76.02 S.Kartsev (2213) – A.Schaffarczyk (2133)
Sander Schloss Open, Werther 2007

White to move and win.



E76.03 R.Akesson (2475) – M.Oleksienko (2541)
23rd Open, Cappelle la Grande 2007

Black to move and win.



E76.04 G.Flear (2480) – Ni Hua (2632)
4th Balagne Open, Calvi 2007

How did Ni Hua win the game relatively easily?
Does 1...e6 win?

 [TOP OF PAGE](#)

 [HOME](#)

 [COLUMNS](#)

 [LINKS](#)

 [ARCHIVES](#)

 [ABOUT THE
CHESS CAFE](#)

[\[Chess Cafe Home Page\]](#) [\[Book Review\]](#) [\[Columnists\]](#)
[\[Endgame Study\]](#) [\[The Skittles Room\]](#) [\[Archives\]](#)
[\[Links\]](#) [\[Online Bookstore\]](#) [\[About The Chess Cafe\]](#) [\[Contact Us\]](#)

© 2007 CyberCafes, LLC. All Rights Reserved.

"**ChessCafe.com**®" is a registered trademark of Russell Enterprises, Inc.