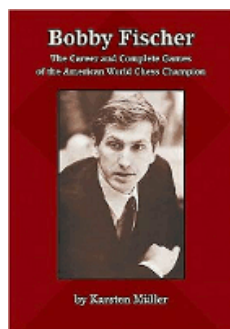




COLUMNISTS

Endgame Corner

Karsten Müller



CHESSTHEATRE
 Play through and download
 the games from
[ChessCafe.com](#) in the
[DGT Game Viewer](#).

Free Shipping!
On all Orders
More than \$75!

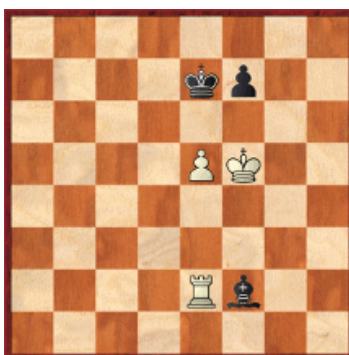
UPS GROUND Only.

In the spirit of the holiday season, we are pleased to offer readers of *Endgame Corner* the opportunity to purchase the [International Series Golden Sheesham Chess Set](#) at a discount of \$13.00 from suggested retail price. Just add the item to your shopping cart and enter the coupon code "mueller13" (without the quotes) to purchase this fine set at the amazingly low price of \$21.95. This offer expires December 31, 2009.

The Domination Game

I do not get a lot of feedback from readers, but when I do it often has a valuable point. Recently, **Gabriele Mileto** from **Italy** discovered that exercise 89.03 is always won for White and therefore cannot be solved.

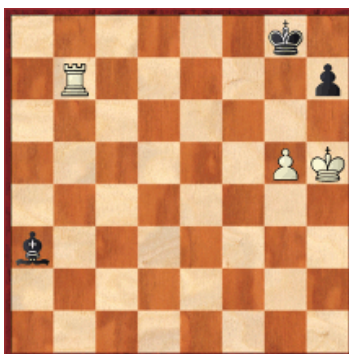
E89.03 Muir, Andrew (2322) - Erdogdu, Mert (2403)
 EU-chT (Men) 15th Gothenburg (2.3), 31.07.2005



I thought that Black can draw by **93...Bb6** or **93...Bd4**, but I was wrong. To understand the winning procedure is not so easy, as will be shown in example 105.02. Other tries such as **93...Ba7?** **94.Rb2 Bd4** **95.Rb7+ Ke8** **96.Kf6 Bc3** **97.Re7++-** and **93...Bh4??** **94.Kg4+-** are obviously lost. The end of the game was **93...Bg3??** **94.Kg4 1-0**

Before moving on let's look at the famous Elkies's position, which is related to this example in many ways.

105.01 Elkies 1993



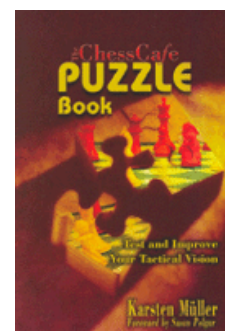
White can always win by using the method of dominating the bishop and a combination of the following plans:

- A) White's king penetrates via h6.
- B) White's king penetrates via f6.

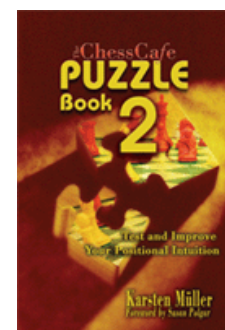
Purchases from our [shop](#) help
 keep [ChessCafe.com](#) freely
 accessible:



[Power Play 11: Defence](#)
 by Daniel King



[ChessCafe Puzzle Book](#)
 by Karsten Müller



[ChessCafe Puzzle Book 2](#)
 by Karsten Müller

C) White plays g6 to reach the configuration of white Kg6, Rf7 vs. black Kg8, which wins regardless of the position of Black's dark-squared bishop.

So let's see a few sample lines:

1.Rb3 Bd6 2.Kg4

The king goes backwards to be able to employ plan A and B quickly.

2...Bf8

2...Bc5 3.Rb5 the domination game begins 3...Bd4 (after 3...Ba3 White can use plan B as the bishop has no access to b2 4.Kf5 Be7 5.Rb8+ Kf7 6.Rb7+- Black can not break this eternal pin, so White's king will now switch to plan A and invade decisively via h6.) 4.Kh5 now plan A is right as after 4...Bc3 (4...Bg7 5.g6 h6 6.Rb8+ Bf8 7.Rxf8+ Kxf8 8.Kxh6+-) 5.Rb8+ Kg7 6.Rb7+ Kh8 White can switch to plan C with 7.g6 h6 8.Kxh6 Bg7+ 9.Kg5 Bd4 10.g7 + Kh7 11.Rf7 Be5 12.g8Q+ Kxg8 13.Kg6+-.

3.Kf5 Bc5 4.Rd3 Bb4 5.Kf6 Ba5 6.Rb3 Bd8+ 7.Kf5 Ba5



8.Kg4

White again threatens to realize Plan A.

8...Bc7

This is called for.

9.Rb5

9.Kh5?! is met by 9...Bd6.

9...Bd6

Finally plan B decides the day as the bishop is dominated.

10.Kf5 Bc7 11.Rd5 Bb6 12.Kf6 Bc7 13.Rd7 Ba5 14.Rg7+ Kh8 15.Kf7+-

105.02 Muir, Andrew (2322) - Erdogdu, Mert (2403)

EU-T (Men) 15th Gothenburg (2.3), 31.07.2005



Although this position looks similar, and White still has Plan A to penetrate with the king via f6 and Plan B to invade via d6, but it also has differences. Plan C usually leads to a draw here, but there are important exceptions, especially with Black's bishop on e7 or h6. Black's bishop can operate from both wings; nevertheless, White is surprisingly always winning as in Elkies's position.

93...Bb6 94.Rb2 Ba5 95.Rb7+ Kf8

95...Ke8 allows the direct realization of Plan A: 96.Kf6 Bd8+ 97.Kg7 Be7 98.Rb8+ Bd8 99.Rxd8+ Kxd8 100.Kxf7+-.

96.Ke4

Again, White's king goes back to be able to realize Plan A and B quickly.

96...Bd2 97.Kd5 Bf4 98.Rb4

The domination game begins.

98...Bd2 99.Rb2 Bc1 100.Rc2 Be3

This allows Plan B, but Black only had a choice between two evils. He can also try 100...Ba3 when White will realize a combination of Plan A and C: 101.Rc3 Bb2 (101...Be7 102.Rf3 Ke8



Now comes an important moment, when White can use plan C: 103.e6 f6 104.Rc3 Kd8 105.Rc4 Bf8 (105...Ba3 106.Ra4 Be7 107.Kc6 Bf8 108.Ra8+ Ke7 109.Rxf8 Kxf8 110.Kd7+-) 106.Ra4 Ke7 107.Ra7+ Kd8 108.Ra8+ Ke7 109.Rb8 Bh6 110.Rb7+ Ke8 111.e7 Kf7 112.Kd6+-) 102.Rb3 Ba1 103.Rf3 Ke7 (103...Kg7 104.Ke4 Kf8 105.Ra3 Bb2 106.Rb3 Bc1 107.Kf5 Bh6 108.Rb7 transposes.) 104.Ke4 Bb2 105.Rb3 Bc1 106.Rb7+ Kf8 107.Kf5 Bh6 108.Rc7 Bg7 (108...Kg8 109.e6 fxe6+ 110.Kg6 Bf8 111.Rc8 e5 112.Re8 e4 113.Rxe4 +-) 109.Rd7 Bh6



Now, because of Black's badly placed bishop, White can use Plan C with 110. e6 fxe6+ 111.Kf6! Ke8 112.Kxe6 Kf8 113.Rf7+ Kg8 114.Kf6+-.

101.Kd6 Bd4 102.Rc8+ Kg7 103.Kd5 Bb2 104.Ke4 Ba3 105.Rc3 Bb4

105...Bb2 106.Rb3 Bc1 (106...Ba1 107.Kf5 Bd4 108.Rb7 Kf8 109.Kf6 Kg8 110.Rxf7 Bxe5+ 111.Kg6+-) 107.Kf5 Bh6 108.Rb8 Bd2 109.Rb7 Kf8 110. Kf6+-.

106.Rb3 Bd2

106...Bf8 107.Rg3+ Kh7 108.Rf3 Kg7 109.Kd5 Kg6 110.Rf6+ Kg7 111.Kc6 Be7 112.Rf3 Kg6 113.Kd7 Bh4 114.Ke8 transposes to the main line.

107.Rd3 Bb4 108.Kd5 Kf8 109.Rb3 Bd2

After 109...Be7 110.Kc6 (it is also possible to use plan C with 110.Rf3 Ke8 111.e6+-) 110...Bg5 111.Kd6 Bh6 112.Rh3 Kg7 113.Rf3 Kg6 114.Ke7 Bg5+ 115.Ke8+-, White wins similar to the main line.

110.Kd6 Bh6 111.Rc3 Bg5 112.Rh3 Kg7

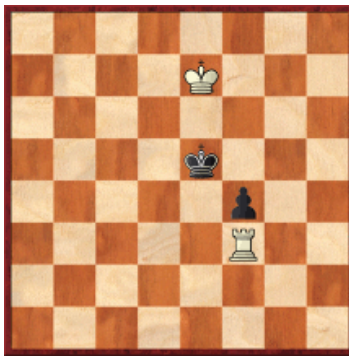
After 112...Bd2 113.Kd7 Bf4 114.Rh5 Kg7 115.Rf5 Bd2, White even has the shot 116.Rxf7+ Kxf7 117.e6++-.

113.Rf3



Plan B is realized. Now the next aim is to march with the king to e8 to force Black's f-pawn forward. Thus, Black has to start counterplay, which will prove to be one tempo too slow.

113...Kg6 114.Kd7 Bh4 115.Ke8 f5 116.e6 Kf6 117.Kd7 Ke5 118.e7 Bxe7 119.Kxe7 f4



Now White wins in similar fashion to a famous Réti study.

120.Rf1 Kf5 121.Kf7!

Opposition.

121...Ke4 122.Kf6 f3 123.Kg5

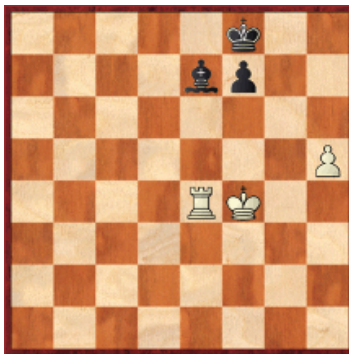
Outflanking and winning.

123...Ke3 124.Kg4 f2 125.Kg3+- 1-0

The following position on the other hand is a fortress, but it is not easy to hold. At first Bu plays faultlessly.

105.03 Ding Liren (2530) - Bu Xiangzhi (2702)

Maotai Prince Cup Kings JinZhou CHN (3), 19.09.2009



79...Ba3! 80.Kf5 Kg7 81.Rg4+ Kh6 82.Rg3 Bc1 83.Rh3 Bb2 84.Rb3 Bd4 85.Ke4 Bc5 86.Rf3 Bb4 87.Rf5 Bd2 88.Kf3 Kg7 89.Kg4 Bc1 90.Rf3 Bd2 91.Kf5 Bc1 92.Ke5 Bd2 93.Kd6 Bc1 94.Ke7



The critical moment has arisen.

94...Kh6?

This allows White's king to stay very well placed. 94...f6? is also wrong: 95. Rh3 Bg5 96.Ke6 Bd2 97.Kf5 Bc1 98.Rg3+ Bg5 99.Rc3 Kh6 100.Kg4 Bd2 101.Rc6 Kg7 102.Kf5 Bg5 103.Re6 Kh7 104.Kg4 Kh6 105.Rd6 Kg7 106.Rd7

+ Kh6 107.Rf7 and Black is in fatal zugzwang.; 94...Bg5+! forces White's king to leave its comfortable chair and draws; e.g., 95.Ke8 Kh6 96.Rh3 f5 (96...Kg7 is playable as well.) 97.Kf7 f4 98.Ke6 f3 99.Rxf3 Kxh5 100.Kf5 Kh4=.

95.Rh3 Kg7

95...f5 96.Ke6 f4 97.Kf5 Be3 98.Kg4 Kh7 99.Rf3 Kh6 100.Rf1 Kg7 101.Re1 Kh6 102.Re2 Kg7 103.Kg5+-.

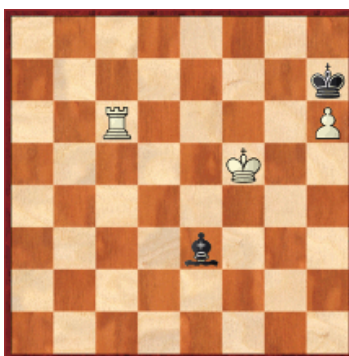
96.h6+! Kh7

96...Bxh6 runs into 97.Rg3+ Kh7 98.Kxf7+-.

97.Kxf7 Bb2 98.Ke6 Bc1 99.Rh1 Bd2 100.Kf5 Be3 101.Kf6 Bd2 102.Rd1 Be3 103.Rd3 Bc1 104.Rb3 Bd2 105.Rg3 Bc1 106.Rg2 Be3 107.Rh2 Bf4 108.Rh1 Be3 109.Kf7 Bd2 110.Rh3 Bg5 111.Rc3 Bd2 112.Rc6 Be3 113.Rg6 Bd4 114.Rd6

114.Rg7+?? Kxh6 spoils it.

114...Be3 115.Rc6 Bd2 116.Rc2 Bf4 117.Rc6 Be3 118.Ra6 Bd2 119.Rb6 Be3 120.Rb3 Bg5 121.Rh3 Bc1 122.Ke6 Bd2 123.Kf5 Bc1 124.Rc3 Bd2 125.Rc6 Be3



126.Rf6

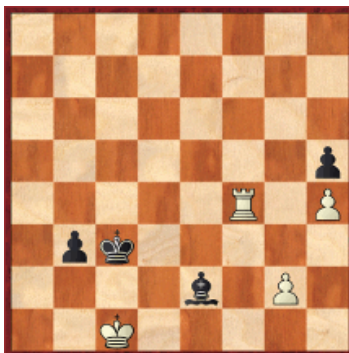
Finally Ding Liren realizes the right plan.

126...Bd2 127.Kg4! Bxh6 128.Kh5 Be3 129.Rf7+ Kg8 130.Kg6 Bg1 131.Rf3 Bh2 132.Rh3 Bg1 133.Rh1 1-0

Solutions to last month exercises

E104.01 Bologan, V (2688) - Predojevic, B (2654)

TCh-SRB 1st League Kragujevac (3), 03.09.2009



How did Bologan save himself?

Bologan saved himself with **63.Rf3+! Bxf3** 63...Bd3 is answered by 64.Rf2! Bc2 65.Rf3+ Bd3 66.Rf2=, **64.gxf3 Kd3 65.Kb2 Ke3 66.Kxb3 Kxf3 67.Kc2 Kg4** ½-½ A draw was agreed because of 68.Kd2 Kxh4 69.Ke2 Kg3 70.Kf1.



Please answer two questions: 1) What is Black's unique drawing move? 2) Why does 86...Qg5+ lose?

86...Qg5+? This allows the simplification into a lost pawn ending. The draw is difficult to find over-the-board: 86...Qg8+ 87.Kd7 (87.Kc7 Qc4+ 88.Kd7 Qa4+ 89.Qc6 Qd4+=) 87...Qg4+ 88.e6 Kg6 89.Kd8 Qe4 90.Qxb6 (90.e7+ Kf7=) 90...Qd5+ 91.Ke7 Qg5+ 92.Ke8 Qd5 93.e7+ Kg7 and White's king cannot break free; e.g., 94.Qg1+ Kf6 95.Qf2+ Kg7 96.Qf8+ Kg6 97.Qf4 Kg7=, 87.Qe7+ Qxe7+ 88.Kxe7 b5 89.e6 b4 90.Kf6 b3 91.e7 b2 92.e8Q b1Q 93.Qf7+ Kh6 94.Qg7+ 1-0

E104.03 Ponkratov, P (2564) - Smirnov, Alexey (2415)
 Corporation Centre Cup Izhevsk RUS (3), 17.07.2009



Finally one pure pawn ending to finish this column. How to evaluate this position with White to move?

White wins with **42.g4!** and Black will have to allow White's king to penetrate via d5 or f5: **42...a5 43.a4 Ke6 44.h4 Kd6** 44...Kf6 45.Kd5+-, **45.Kf5!** 45.g5? hxg5 46.hxg5 Ke6 47.g6 Kf6=, **45...Kd5 46.g5 hxg5 47.hxg5 Kd6** 47...e4 48.g6 e3 49.g7 e2 50.g8Q+-, **48.g6 1-0**

Comment on this month's column via our [Contact Page](#)! Pertinent responses will be posted below daily.

[\[ChessCafe Home Page\]](#) [\[Book Review\]](#) [\[Columnists\]](#)
[\[Endgame Study\]](#) [\[The Skittles Room\]](#) [\[Archives\]](#)
[\[Links\]](#) [\[Online Bookstore\]](#) [\[About ChessCafe.com\]](#) [\[Contact Us\]](#)

© 2009 BrainGamz, Inc. All Rights Reserved.
"ChessCafe.com®" is a registered trademark of BrainGamz, Inc.