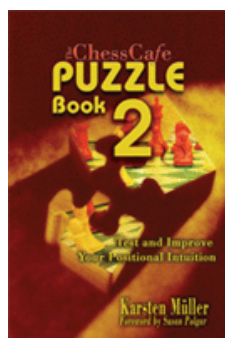




COLUMNISTS

Endgame
Corner

Karsten Müller



CHESTHEATRE

Play through and download
the games from
ChessCafe.com in the
[DGT Game Viewer](#).

[The Complete
DGT Product Line](#)

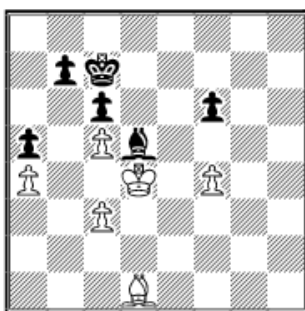


Same-colored Bishops

After investigating opposite-colored bishop endings [last month](#), I decided to look at same-colored bishops this time. The drawish tendency is lower than with “bees of opps,” but still quite large. One of the reasons for this is that the defending king cannot easily be dislodged if it sits on a square that the bishop does not control. Furthermore, it is more difficult for the defending bishop to fall into *zugzwang* compared to a knight, and it is usually very difficult to exchange it.

I found the following victory of fourteen-year-old Russian-Nepalese Anish Giri (who now lives in the Netherlands) against a very experienced grandmaster worth analyzing in more detail. The position should still be drawn, but as Black has the plan to send his king on a long march inside White’s camp it is not so easy.

98.01 Romanishin,O (2533) - Giri,A (2469)
Corus C Wijk aan Zee NED (8), 25.01.2009



67...Kd7 68.Bg4+ Ke7 69.Bd1

69.c4 Bf7 70.f5 Kf8 71.Be2 Kg7 72.Ke4 Kh6 73.Kf4 Bh5 74.Bg4= is better from a practical point of view. The strategy to restrict the enemy bishop is often seen. As Black’s king cannot penetrate, no real progress can be made.

69...Kf7 70.Bc2 Ke6 71.Ke3 Bg2 72.Kd4 Bh3 73.Bd3 Bg4 74.Bc2 Bh5 75.Kc4 Be2+ 76.Kd4 Bg4 77.Kc4 Bf5 78.Bd1 Be4 79.Bg4+ Kf7 80.Bh5 +?!

This drives Black’s king to the kingside, where it wants to invade anyway. 80.Bc8 Bc2 81.Bxb7 Bxa4 82.Bc8 Kg6 83.Bg4 is easier.

80...Kg7 81.Bd1 Kg6 82.Kd4 Kf5 83.Ke3 Bd5

Visit Shop.ChessCafe.com for
the largest selection of chess
books, sets, and clocks in
North America:



[Essential Chess Endings](#)

by John Donaldson

Only \$9.95!

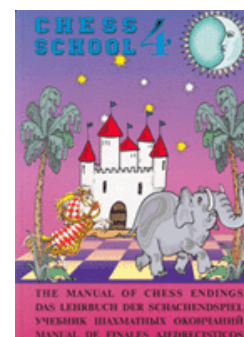


[A Practical Guide](#)

[to Rook Endgames](#)

by Nikolay Mineev

Only \$9.95!

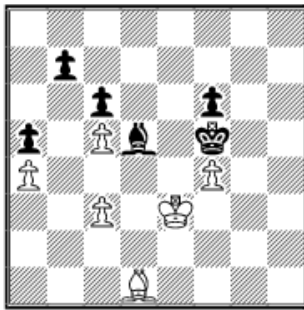


[The Manual of](#)

[Chess Endings](#)

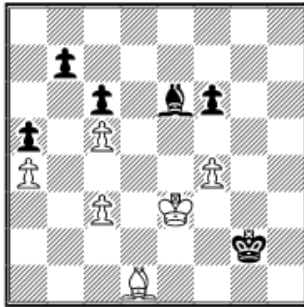
by Sarhan Guliev

Only \$9.95!



Zugzwang.

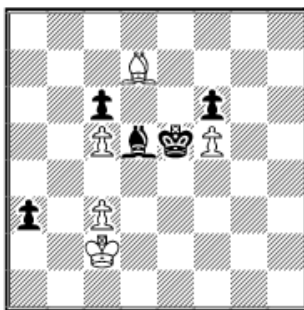
84.Bc2+ Kg4 85.Bd1+ Kg3 86.Bc2 Be6 87.Bd1 Kg2



After Black's long march, the moment of truth has arrived. Now it must be stopped.

88.Bc2?

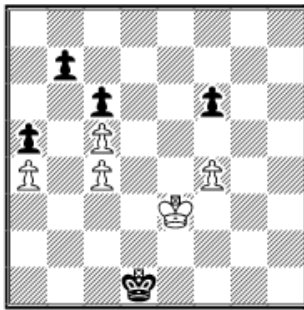
This was a mistake. After 88.Be2, I could not find a win, but maybe you can do better? For example, 88...Kg1 (88...Bb3 89.Bg4 Bxa4 90.Bc8 Bb3 91.Bxb7 Bd5 92.c4 Bf3 93.f5 Kg3 94.Kd4 Kf4 95.Bc8 Be4 96.Bd7) 89. Bd3 again stopping the march. (After 89.Bd1? Black invades successfully: 89...Kf1 90.Kd2 Kf2 91.Kd3 Ke1 92.Bf3 Bb3 93.Bg4 Bxa4 94.Bc8 Bb5+ 95.Kc2 Ba6 96.Be6 Ke2 97.Kb3 Ke3 98.f5 Bb5 99.Bc8 Ke4 100.c4 (100.Bxb7 Kd5+) 100...Ba6 101.Kc3 a4 102.Kb4 Kd4+) 89...Bb3 90.Bf5 Bxa4 91.Bc8 Bb3 92.Kd2 a4 93.Kc1 a3 94.f5 Kf2 95. Bxb7 Bd5 96.Kc2 Ke3 97.Bc8 Ke4 (97...a2 98.Kb2 Kd3 99.Ba6+ Kd2 100.c4 Bg8 101.Bb7 Kd3 102.Bxc6 Kxc4 103.Bb7 Kxc5 104.Ka1) 98. Be6 Ke5 99.Bd7



As Black's bishop does not control a1 and the f6-pawn is not far advanced, Black cannot win.

88...Kf1 89.Kf3

89.Bd3+ Ke1 90.Bc2 Bh3 91.Bb3 Bf5 92.c4 Bg4 93.Bc2 Bd1 94.Bxd1 Kxd1



White loses the pawn ending: 95.Ke4 (95.Kd3 Ke1 96.Ke3 Kf1 97.Kf3 f5→) 95...Kd2 96.Kf5 Ke3 97.Kxf6 Kxf4 98.Ke6 Ke4 99.Kd7 Kd4 100.Kc7 Kxc4 101.Kxb7 Kxc5→.

89...Ke1 90.Ke3 Bg4!

The weakness on a4 will be White's undoing.

91.Bg6 Bd1 92.Kd3 Bxa4 93.c4

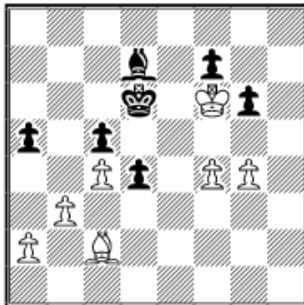
The counterattack 93.Bf5 does not help: 93...Kd1 94.Bc8 Bb3 95.Bxb7 a4 96.Bxc6 a3 97.Bf3+ Kc1 98.c6 a2 99.c7 Be6 100.Bd5 Bf5+ 101.Be4 a1Q 102.Bxf5 Qb1+→.

93...Kf2 94.Bf7 Kf3 95.f5 Kf4 96.Be6 Bd1 97.Bc8 Bf3 98.Kc3 Ke5 99.Be6 Be4 0–1

I also once had an interesting bishop ending against Oleg Romanishin, but, unlike Anish, I did not manage to win.

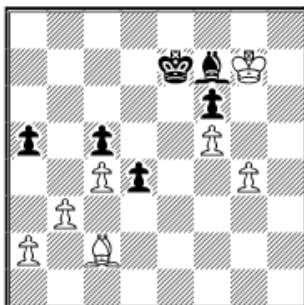
98.02 Müller,Karsten (2533) - Romanishin,Oleg (2567)

Lippstadt (9), 30.07.1999



40.Kxf7?

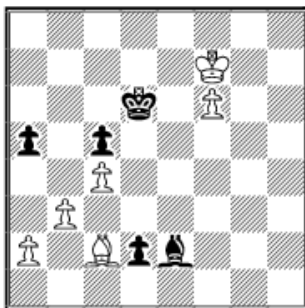
The typical fortieth move error just before the time control. Playing for domination and *zugzwang* with 40.f5! was necessary; e.g., 40...Be8 (40...gxf5 41.gxf5 Be8 42.Bd3 Kd7 43.Ke5 Ke7 (43...Kc6 44.Bc2 Kc7 45.Kd5 Kb6 46.Kd6+-) 44.f6+ Kd7 45.Kd5+-) 41.Bd3 g5 42.Bc2 Kd7 43.Kxg5 Ke7 44.Kh6 f6 45.Kg7 Bf7



Now White can start more drastic action: 46.g5 fxg5 47.f6+ Ke6 48.Bg6

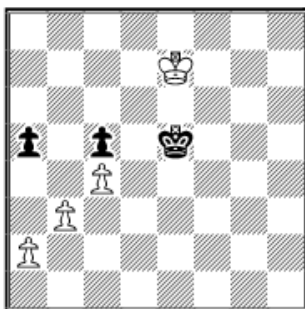
Bg8 49.Be4 Ke5 50.Bd5 d3 51.Bxg8 d2 52.f7 d1Q 53.f8Q+-.

40...Bxg4 41.Bxg6 Be2 42.f5 d3 43.f6 d2 44.Bc2



44...Ke5!

A nasty surprise. I had only calculated 44...d1Q? 45.Bxd1 Bxd1 46.Kg6! (46.Kg7? Bh5 47.f7 Bxf7 48.Kxf7 Ke5 49.Ke7 is surprisingly only drawn:

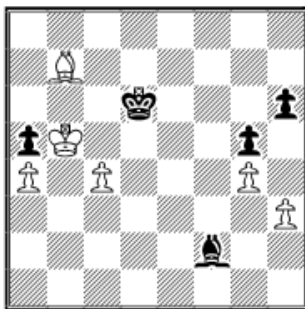


49...Kd4 50.Kd6 a4 51.Kc6 a3 52.Kd6 Kc3 53.Kxc5 Kb2 54.b4 Kxa2 55. b5 Kb3 56.b6 a2 57.b7 a1Q 58.b8Q+ Kc2!=) 46...Ke6 47.f7 Bh5+ 48. Kxh5 Kxf7 49.Kg5 Ke6 50.Kf4+-.

45.Ke7 Kd4 46.f7 Kc3 47.f8Q Kxc2 48.Qf5+ Bd3 49.Qf2 Kc1 50.Qxc5 d1Q 51.Qxa5 Kb1 52.c5 Qe2+ 53.Kd8 Bb5 54.a4 Qe8+ 55.Kc7 Qc6+ 56.Kb8 Qe8+ 57.Kc7 Qc6+ 58.Kb8 Qe8+ 59.Kc7 1/2-1/2

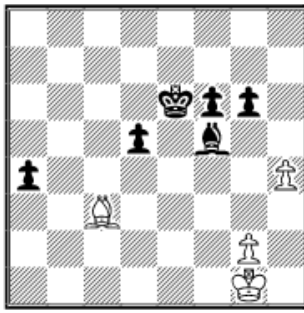
Solutions to last month's exercises

E97.01 Kramnik, Vladimir (2777) - Svidler, Peter (2747)
Corus Wijk aan Zee (4), 14.01.2004



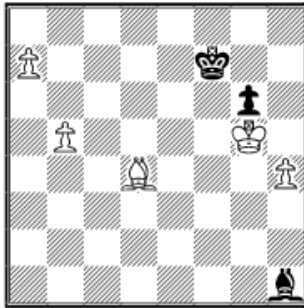
Peter Svidler resigned in a drawn position. He can just defend along the diagonal a7-g1: **49...Bg1 50.Kxa5 Bf2 51.Kb5 Bg1 52.Bd5 Bf2 53.Ka6 Kc7 54.a5 Bg1 55.Kb5 Kd6 56.Kb4 Bf2 57.a6 Ba7 58.Kc3 Ke5= 1-0**

E97.02 Topalov, Veselin (2740) - Shirov, Alexei (2710)
Linares, 1998



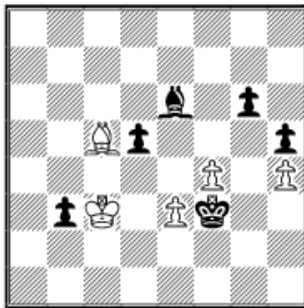
The only winning move is the amazing **47...Bh3!!** 47...Kd6? 48.Kf2 Kc5 49.Ke3 Kc4 50.Bxf6 Kb3 51.Kd2 Ka2 52.Kc1=. **48.gxh3 Kf5 49.Kf2 Ke4 50.Bxf6** 50.Ke2 a3 51.Kd2 d4 52.Ba1 f5 53.Ke2 f4 54.Kf2 f3 55.Kf1 Ke3 56.Ke1 d3+-. **50...d4 51.Be7 Kd3 52.Bc5 Kc4 53.Be7 Kb3 0-1**

E97.03 Euwe,Max - Yanofsky,Daniel Abraham
Staunton m Groningen (1), 1946



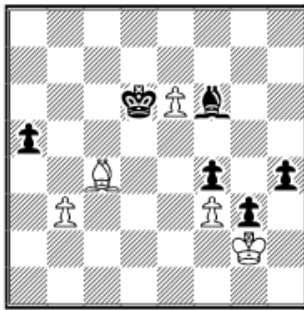
Euwe won by breaking through with his king to the queenside: **44.Bf6 Bg2** 44...Bf3 allows 45.Kf4 Bh1 46.Ke5+-. **45.h5 gxh5 46.Kf5 1-0**
Yanofsky resigned, as Black's king is cut off on the diagonal h4-d8 and it cannot follow White's in the race to the queenside.

E97.04 Kotov,Alexander - Botvinnik,Mikhail
URS-ch22 Moscow, 1955



Botvinnik created a second decisive passed pawn with the typical break **59...g5!! 60.fxg5** 60.hxg5 h4 61.g6 h3 62.f5 Bxf5 63.g7 Be6 64.Bd6 Kxe3 65.Kxb3 d4+-. **60...d4+ 61.exd4** 61.Bxd4 Kg3 62.g6 Kxh4 63.g7 Kh3 64.e4 h4 65.Bf2 Kg4+-. **61...Kg3** 61...Kg4? 62.d5 Bxd5 63.Bf2=. **62.Ba3 Kxh4 63.Kd3 Kxg5 64.Ke4 h4 65.Kf3 Bd5+ 0-1**

E97.05 Skatchkov,Pavel (2370) - Sherbakov,Ruslan (2580)
RUS-Cup5 terinburg (2), 1997



The e6-pawn will be White's undoing, if he does not sacrifice it immediately: **69.Kh3?** 69.e7!! Bxe7 70.Bg8 Ke5 71.Bf7 Kd4 72.Bg8 Ke3 73.Be6 Bf6 74.Bh3= and White's fortress cannot be stormed. **69...Be7 70. Bd3 Ke5 71.Kg2 Kd4 72.Bc4** 72.Be4 Kc3 73.Bd5 Kd2 74.Be4 (74.Bc4 Ke3 75.Bf1 h3+ 76.Kxh3 Kxf3--+) 74...Ke2 75.Bf5 Ke3 76.Bh3 Kd2 77. Bf5 Kc3--+. **72...Ke3 0-1**



[TOP OF PAGE](#)



[HOME](#)



[COLUMNS](#)



[LINKS](#)



[ARCHIVES](#)



[ABOUT THE
CHESS CAFE](#)

[\[ChessCafe Home Page\]](#) [\[Book Review\]](#) [\[Columnists\]](#)
[\[Endgame Study\]](#) [\[The Skittles Room\]](#) [\[Archives\]](#)
[\[Links\]](#) [\[Online Bookstore\]](#) [\[About ChessCafe.com\]](#) [\[Contact Us\]](#)

© 2009 CyberCafes, LLC. All Rights Reserved.
 "ChessCafe.com®" is a registered trademark of Russell Enterprises, Inc.