



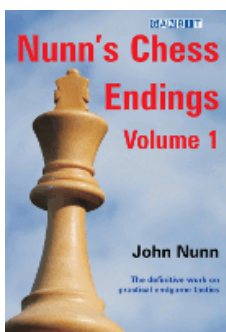
COLUMNISTS

Endgame Corner

Karsten Müller

[\[Find us on Facebook.\]](#)

[Translate this page](#)



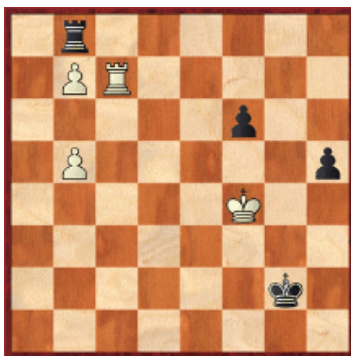
CHESSTHEATRE
 Play through and download
 the games from
[ChessCafe.com](#) in the
[DGT Game Viewer](#).



The Riddle of Duchamp

Alexander Beliavsky and Adrian Michalchishin devote one chapter of their book *Winning Endgame Technique* (Batsford 1995) to the following old riddle by famous artist Marcel Duchamp: "He composed one enigmatic study but never gave the solution. In the 1970s the magazine *Chess Life and Review* published a discussion with the participation of Grandmaster Larry Evans, reaching the conclusion that there is no win." I agree with this result, which is also reached by Beliavsky and Mikhachishin:

114.01A Riddle of Duchamp: Original Version



[FEN "1r6/1PR5/5p2/1P5p/5K2/8/6k1/8 w - - 0 1"]

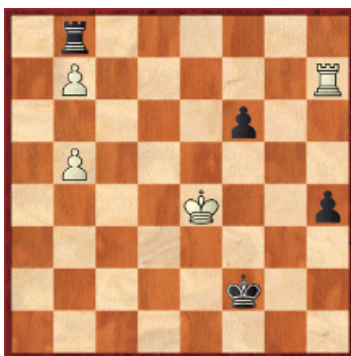
1.Rg7+

1.Ke3 h4 2.Rg7+ Kf1 3.Kf3 h3 4.Rh7 Ke1 5.Rxh3 Rxb7 6.Ke3



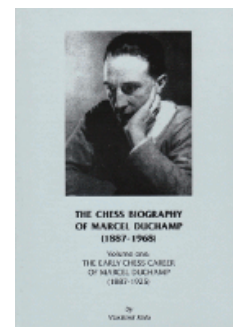
[FEN "8/1r6/5p2/1P6/8/4K2R/8/4k3 b - - 0 6"]

After 6...Kf1 7.Rf3+ Kg2 8.Rf5 Kg3 9.Kd4 Kg4= Black's f-pawn will provide sufficient counterplay.; 1.Ke4 h4 2.Rg7+ Kf2 3.Rh7



[FEN "1r6/1P5R/5p2/1P6/4K2p/8/5k2/8 b - - 0 3"]

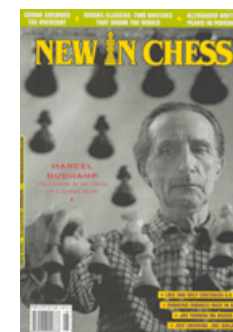
Purchases from our
[chess shop](#) help keep
[ChessCafe.com](#) freely
 accessible:



*Chess Biography of Marcel
 Duchamp, Vol. One*
 by Vlastimil Fiala

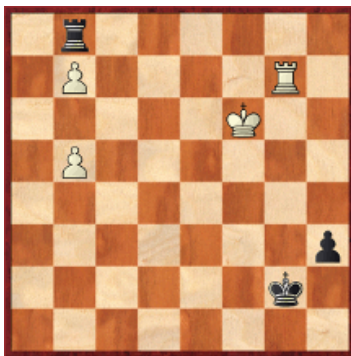


*Chess Biography of Marcel
 Duchamp, Vol. Two*
 by Vlastimil Fiala



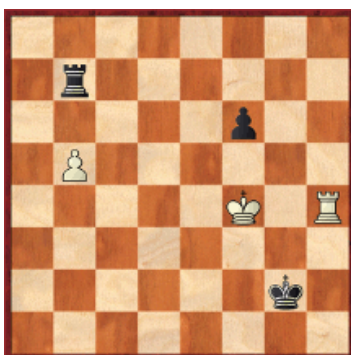
NIC Magazine, 2009/5
 by New In Chess

3...h3 again hoping for counterplay with the f-pawn. But not (3...Kg3? 4.Kd5 h3 5.Kc6 h2 6.Kc7 Rxb7+ 7.Kxb7 f5 8.Kc6 f4 9.b6 f3 10.b7 f2 11.b8Q++-) 4. Rxh3 Rxb7 5.Rb3 Rb6 6.Kd5 f5 7.Kc5 Rb8 8.b6 f4=; 1.Rh7 h4 2.Rxh4 Rxb7 3.Rh5 Rb6=; 1.Kf5 h4 2.Kxf6 h3 3.Rg7+



[FEN"1r6/1P4R1/5K2/1P6/8/7p/6k1/8 b - - 0 3"]

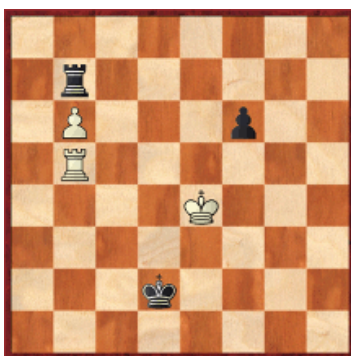
3...Kf2 (Of course not 3...Kh1? 4.Ke5 h2 5.Kd6 Rg8 6.Rh7+-) 4.Rh7 Kg2 5. Ke5 h2 6.Kd6 Rxb7!=; After 1.Rh7 h4 2.Rxh4 Rxb7



[FEN"8/1r6/5p2/1P6/5K1R/8/6k1/8 w - - 0 3"]

The rook can not move to b4 which led me to the following version of the study.

1...Kf2 2.Rh7 h4 3.Rxh4 Rxb7 4.Rh2+ Ke1 5.Rb2 Kd1 6.b6 Kc1 7.Rb5 Kd2 8.Ke4



[FEN"8/1r6/1P3p2/1R6/4K3/8/3k4/8 b - - 0 8"]

It seems that Black loses because of the bodycheck. But this is deceptive:

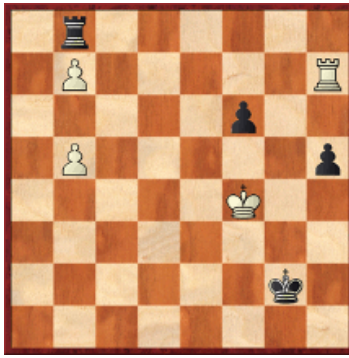
8...f5+!!

8...Ke2? is refuted by 9.Rb2+ Kd1 10.Kd5 f5 11.Kc6 Rb8 12.b7 f4 13.Rf2 Rf8 14.Rxf4+- and; 8...Kc3? runs into the bodycheck 9.Kd5+-.

9.Kxf5 Kd3 10.Ke5 Kc4 11.Rb1 Kc5=

In view of this result, I suggest the following version of Duchamp's study:

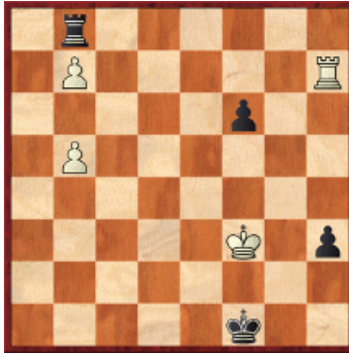
114.01B Version of the Riddle of Duchamp



[FEN"1r6/1P5R/5p2/1P5p/5K2/8/6k1/8 w - - 0 1"]

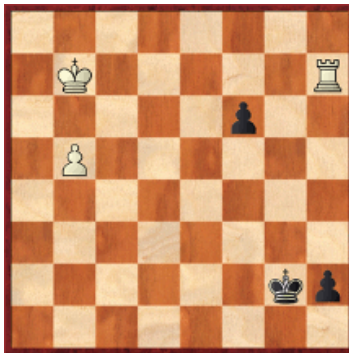
1.Kf5!

1.Ke3? h4 2.Rg7+ (2.Rxh4 Rxb7 3.Rb4 Kg3 4.b6 f5=) 2...Kf1 3.Kf3 h3 4.Rh7



[FEN"1r6/1P5R/5p2/1P6/8/5K1p/8/5k2 b - - 0 4"]

Now only 4...Ke1! saves Black.; 1.Rg7+? transposes to 114.01A.; 1.Rxh5? Rxb7 2.Rc5 Kf2 3.Rc2+ Ke1 4.Rb2 Kd1 5.b6 Kc1 6.Rb5 Kd2 7.Ke4 f5+!!=; 1.Ke4? h4 2.Kd5 h3 3.Kc6 h2 4.Kc7 Rxb7+ 5.Kxb7



[FEN"8/1K5R/5p2/1P6/8/8/6kp/8 b - - 0 5"]

5...f5! Direct promotion with (5...h1Q? is premature: 6.Rxh1 Kxh1 7.Kc6 f5 8. Kd5 f4 9.Ke4+-) 6.Kc6 f4 7.b6 h1Q=.

1...h4

1...Kg3 2.Rxh5 Rxb7 3.Kxf6 Rb6+ 4.Ke7!+-.

2.Rxh4

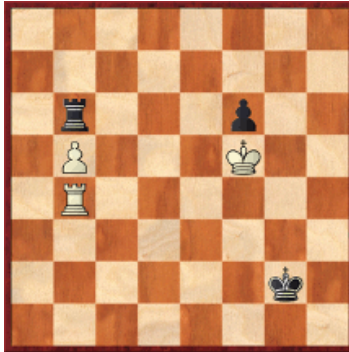
2.Kxf6? is refuted by 2...h3 3.Ke6 h2 4.Kd6



[FEN"1r6/1P5R/3K4/1P6/8/8/6kp/8 b - - 0 4"]

4...Rxb7!=.

2...Rxb7 3.Rb4 Rb6

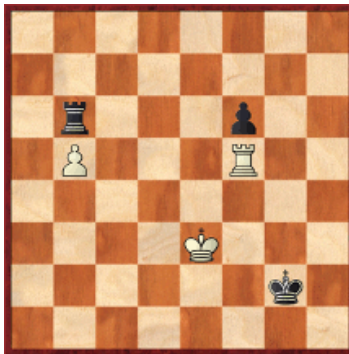


[FEN"8/8/1r3p2/1P3K2/1R6/8/6k1/8 w - - 0 4"]

4.Kf4

First the king has to go backwards to win time before returning to support his pawn. 4.Rb3 Kf2 5.Ke4 Ke2 6.Rb2+ Kd1 7.Kd3 transposes.

4...Kf2 5.Rb2+ Ke1 6.Ke3 Kd1 7.Rd2+ Ke1 8.Rd5 Kf1 9.Rf5+ Kg2



[FEN"8/8/1r3p2/1P3R2/8/4K3/6k1/8 w - - 0 10"]

The time has come to return:

10.Kd4 Kg3 11.Kc5 Re6

11...Kg4 12.Kxb6 Kxf5 13.Kc6 and White wins the race.

12.b6 Kg4 13.b7 Kxf5 14.b8Q Re5+ 15.Kd6



[FEN"1Q6/8/3K1p2/4rk2/8/8/8 b - - 0 15"]

White's queen will prevail sooner or later.

**15...Kg5 16.Qg8+ Kh6 17.Qf7 Kg5 18.Qg7+ Kf5 19.Qg2 Re6+ 20.Kd7 Re5
21.Qg3 Re4 22.Qf3+ Rf4 23.Qd5+ Kg4 24.Qg2+ Kf5 25.Ke7 Ke5 26.Qe2+
Kd5 27.Qd3+ Ke5 28.Kf7 f5 29.Qe3+ Re4 30.Qc5+ Kf4 31.Kf6+-**

© 2010 ChessCafe.com. All Rights Reserved.

Comment on this month's column via our [Contact Page](#)! Pertinent responses will be posted below daily.

 [TOP OF PAGE](#)

 [HOME](#)

 [COLUMNS](#)

 [LINKS](#)

 [ARCHIVES](#)

 [ABOUT THE
CHESS CAFE](#)

[\[ChessCafe Home Page\]](#) [\[Book Review\]](#) [\[Columnists\]](#)
[\[Endgame Study\]](#) [\[The Skittles Room\]](#) [\[ChessCafe Archives\]](#)
[\[ChessCafe Links\]](#) [\[Online Bookstore\]](#) [\[About ChessCafe.com\]](#)
[\[Contact ChessCafe.com\]](#)

© 2010 BrainGamz, Inc. All Rights Reserved.
"ChessCafe.com®" is a registered trademark of BrainGamz, Inc.