



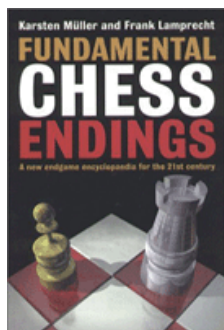
## COLUMNISTS

### Endgame Corner

Karsten Müller

[\[Find us on Facebook.\]](#)

[Translate this page](#)



### CHESSTHEATRE

Play through and download the games from [ChessCafe.com](#) in the [DGT Game Viewer](#).

**Free Shipping!**  
On all Orders  
More than \$75!

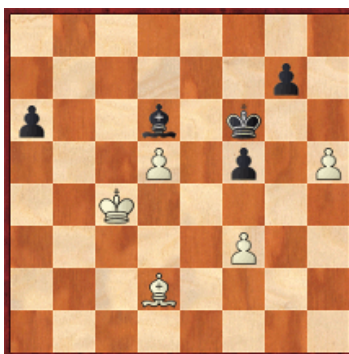
UPS GROUND  
Only.



## Capablanca's Concept

If you have only one bishop left, there is always the question as to where to put the pawns: on the color of the bishop or not. This is difficult to answer in general, but in pure same-colored bishop endings Capablanca's advice to put the pawns on the opposite color to complement the bishop and to restrict the enemy king usually comes in handy.

**115.01 Bologan, Victor (2668) – Motylev, Alexander (2704)**  
11th Karpov Poikovsky (11), 13.06.2010

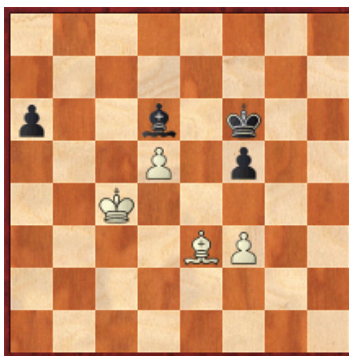


[FEN "8/6p1/p2b1k2/3P1p1P/2K5/5P2/3B4/8 b - - 0 61"]

**61...f4?**

This violates the guideline, opens a road for White's king and weakens the f-pawn.

61...g5 62.hxg6 (62.Bc3+ Kf7 63.h6 Kg6 64.Bb4 Bf4 65.d6 Bxd6 66.Bxd6 Kxh6 67.Kd3 g4=) 62...Kxg6 63.Be3 Kf6



[FEN "8/8/p2b1k2/3P1p2/2K5/4BP2/8/8 w - - 0 64"]

This draws, as the aggressive 64.Bc5?? even loses because of the distant passed a-pawn: 64...Bxc5 65.Kxc5 Ke7 66.Kc6 Kd8+.

**62.Bc3+ Kg5**

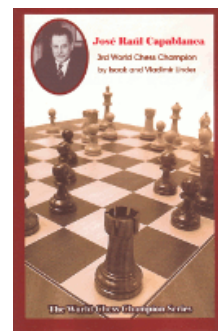
After 62...Kf7, White penetrates on the weakened light squares: 63.Kd3 Bc7 64.Ke4 a5 65.Kf5 a4 66.Bb4+.

**63.Bxg7 Kxh5 64.Bd4**

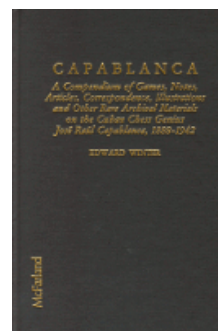
Purchases from our [chess shop](#) help keep [ChessCafe.com](#) freely accessible:



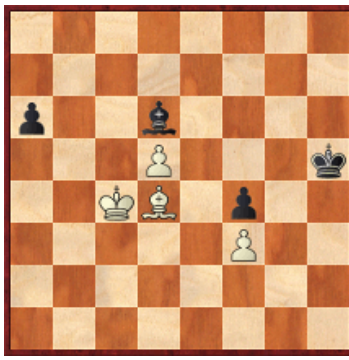
*Capablanca: A Primer of Checkmate*  
by Frisco Del Rosario



*Jose Raul Capablanca*  
by Isaak & Vladimir Linder



*Capablanca*  
by Edward Winter



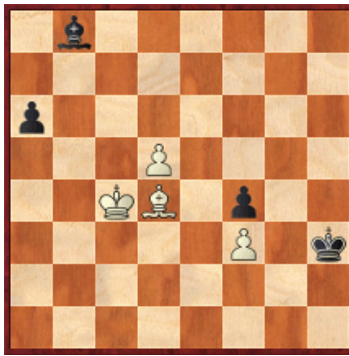
[FEN"8/8/p2b4/3P3k/2KB1p2/5P2/8/8 b - - 0 64"]

#### 64...Kh4

64...Bc7 is met by 65.Bf2!, which stops the counterplay and White wins. (The direct 65.Kc5? violates the endgame principle "Do not rush" and runs into 65...Kh4 66.Kc6 Bd8=.) 65...Kg6 (65...Bd6 66.Bc5+-) 66.Kc5 a5 (66...Kf7 67.Kc6 Bd8 68.Kd7 Bf6 69.Bb6+-) 67.Kc6 Be5 68.Kb5 Kf7 69.Kxa5+-.

#### 65.Bc5 Bb8

65...Be5 66.Bf2+ Kh3 67.Bd4 Bb8



[FEN"1b6/8/p7/3P4/2KB1p2/5P1k/8/8 w - - 0 68"]

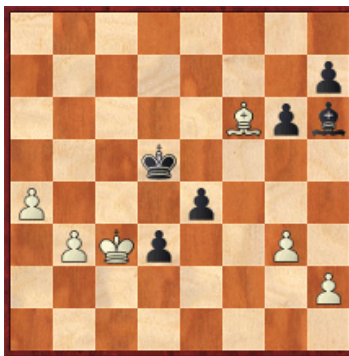
This does not help because of 68.Kd3! and White's centralized forces will dominate Black: 68...Kg3 69.Ke4 a5 70.Bc5 a4 71.d6+-.

#### 66.Kd4 Kg5 67.d6 a5 68.Kd5 a4 69.Bb6 1-0

But all rules have exceptions.

#### 115.02 Simacek, P (2518) – Wojtaszek, R (2663)

Wroclaw (3), 28.06.2010



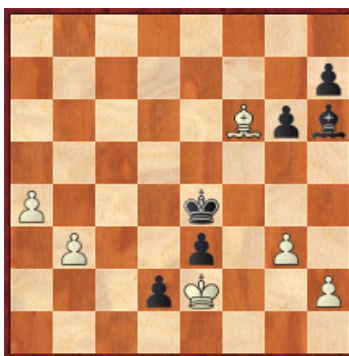
[FEN"8/7p/5Bpb/3k4/P3p3/1PKp2P1/7P/8 b - - 0 42"]

Wojtaszek has calculated that he wins by force by advancing his passed pawns further.

#### 42...d2! 43.Kc2 e3 44.Kd1

44.Bc3 Ke4 45.a5 Kf3 46.Bxd2 (46.a6 Ke2→) 46...exd2 47.Kd1 Ke4 48.a6 Be3 49.Ke2 Kd5→.

**44...Ke4 45.Ke2**



[FEN"8/7p/5Bpb/8/P3k3/1P2p1P1/3pK2P/8 b - - 0 45"]

At first sight, it seems that Wojtaszek has miscalculated. Yet his next move is the point of his approach.

**45...d1Q+!! 46.Kxd1 Kd3 47.Ke1**

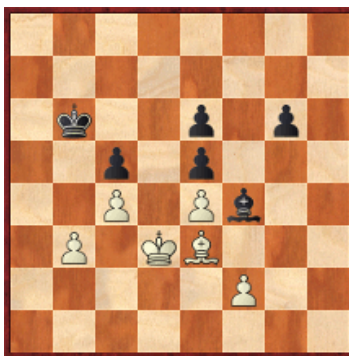
47.Bc3 Kxc3 48.Ke2 Kd4→.

**47...Bf8! 0-1**

But not 47...e2? 48.Bc3 Kxc3 49.Kxe2 and Black's winning potential is insufficient.

In the last example, the attacker also profits from the fact that the defender's pawns can be attack by his bishop.

**115.03 Richter, Mic (2428) – Mamedov, Nid (2604)**  
Sants Open A La Bordeta (5), 24.08.2010



[FEN"8/8/1k2p1p1/2p1p3/2P1Pb2/1P1KB3/5P2/8 w - - 0 43"]

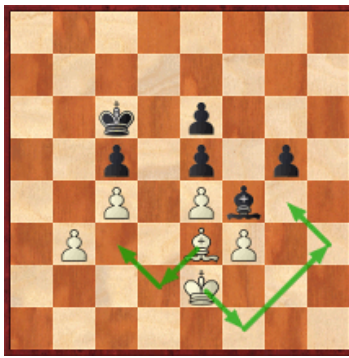
**43.Ke2!**

Richter retreats to get the option to play on both wings.

43.Bxf4? exf4 44.f3 Ka5 45.Kc3 g5 loses for White.

**43...Kc6**

43...g5 44.f3 Kc6



[FEN"8/8/2k1p3/2p1p1p1/2P1Pb2/  
1P2BP2/4K3/8 w - - 0 45"]

This does not help. White cannot go into a pawn ending, but he can win the bishop ending by invading with his pieces: 45.Bd2 Kd7 46.Bc3 Kd6 47.Kf1 Ke7 48.Kg2 Kf6 49.Kh3 Kg6 50.Kg4+-.

#### 44.Kf3 g5

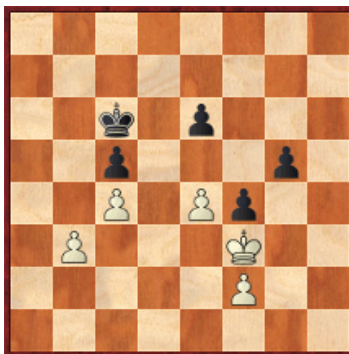
44...Bxe3?! 45.Kxe3 Kb6 46.Kd3 Ka5 47.Kc3 g5 48.f3+-.

#### 45.Bxf4!

Now White can enter the pawn ending, as he has won several tempi.

#### 45...gxf4

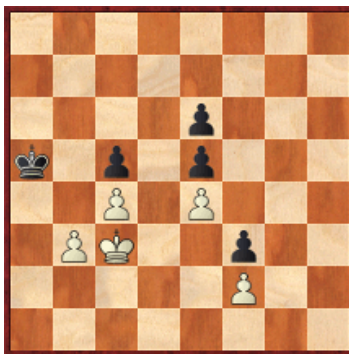
After 45...exf4



[FEN"8/8/2k1p3/2p3p1/2P1Pp2/1P3K2/5P2/8 w - - 0 46"]

White closes the road first with 46.e5+- and then wins the race. The direct 46.Kg4 wins as well: 46...Kd6 47.Kxg5 Ke5 48.f3 Kd4 49.Kxf4 Kc3 50.Ke3 Kxb3 51.Kd3 e5 52.f4 exf4 53.e5+-.

#### 46.Ke2 Kb6 47.Kd3 Ka5 48.Kc3 f3



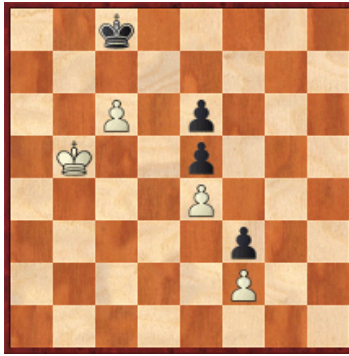
[FEN"8/8/4p3/k1p1p3/2P1P3/1PK2p2/5P2/8 w - - 0 49"]

Now White opens the queenside with a typical break.

#### 49.b4+! cxb4+

49...Kb6 is met by 50.b5+- followed by marching to the kingside. But not 50. bxc5+?? Kxc5 51.Kb3 Kd4 52.Kb4 Kxe4 53.Kc3 Kf4 54.c5 e4=.

**50.Kb3 Kb6 51.Kxb4 Kc6 52.c5 Kc7 53.Kb5 Kb7 54.c6+ Kc8**



[FEN"2k5/8/2P1p3/1K2p3/4P3/5p2/5P2/8 w - - 0 55"]

How to make progress? By triangulation.

**55.Kc4 Kb8 56.Kb4 Kc8 57.Kb5 Kb8**

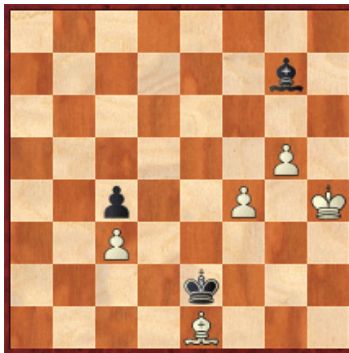
57...Kc7 58.Kc5+-.

**58.Kb6 Ka8 59.Kc7 1-0**

### Exercises (Solutions next month)

**E115.01 Roque, M (2244) – Ranola, Y (2397)**

6th Prospero A Pichay Cup Manila (7), 25.08.2010

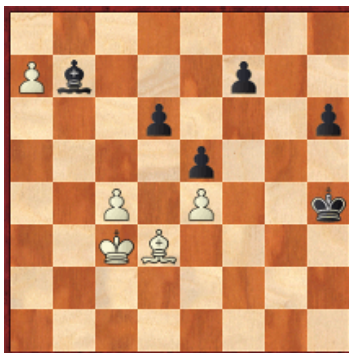


[FEN"8/6b1/8/6P1/2p2P1K/2P5/4k3/4B3 w - - 0 62"]

How did Roque storm Black's house ?

**E115.02 Short, N (2690) – Fluvia Poyatos, Joa (2499)**

TCh-ESP CECLUB Honor Sestao (5), 27.08.2010

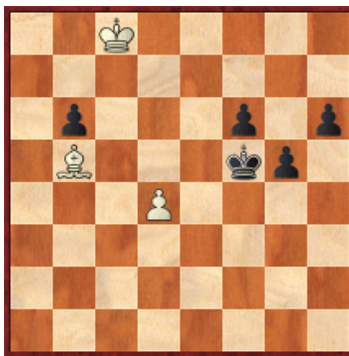


[FEN"8/Pb3p2/3p3p/4p3/2P1P2k/2KB4/8/8 w - - 0 45"]

Short found the shortest route to win. Can you do the same?

**E115.03 Saez Coma, Alejandro (1477) – Serra Canals, Oriol (1607)**



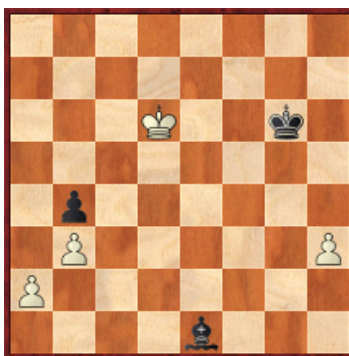


[FEN"2K5/8/1p3p1p/1B3kp1/3P4/8/8/8 w - - 0 72"]

How to assess this position with White to move ?

**E115.04 Akesson, R (2470) – Vovk, Y (2561)**

GM1 Valoz Cup Olomouc (3), 06.08.2010



[FEN"8/8/3K2k1/8/1p6/1P5P/P7/4b3 b - - 0 55"]

Black to move and win.

---

© 2010 ChessCafe.com. All Rights Reserved.

---

Comment on this month's column via our [Contact Page](#)! Pertinent responses will be posted below daily.

---

 [TOP OF PAGE](#)

 [HOME](#)

 [COLUMNS](#)

 [LINKS](#)

 [ARCHIVES](#)

 [ABOUT THE  
CHESS CAFE](#)

[\[ChessCafe Home Page\]](#) [\[Book Review\]](#) [\[Columnists\]](#)  
[\[Endgame Study\]](#) [\[The Skittles Room\]](#) [\[ChessCafe Archives\]](#)  
[\[ChessCafe Links\]](#) [\[Online Bookstore\]](#) [\[About ChessCafe.com\]](#)  
[\[Contact ChessCafe.com\]](#)

© 2010 BrainGamz, Inc. All Rights Reserved.  
"ChessCafe.com®" is a registered trademark of BrainGamz, Inc.