



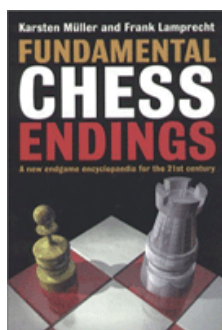
COLUMNISTS

Endgame Corner

Karsten Müller

[\[Find us on Facebook.\]](#)

Translate this page



Play through and download the games from [ChessCafe.com](#) in the [ChessBase Game Viewer](#).

Free Shipping!

**On all Orders
More than \$75!**

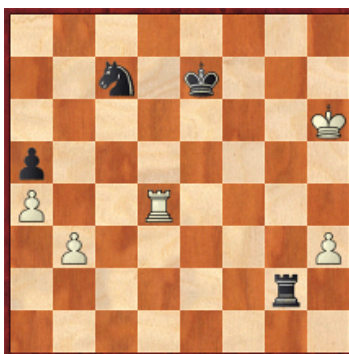


UPS GROUND Only.

Prophylaxis

The importance of the concept of prophylaxis for the game of chess can hardly be overestimated. You should always try to find out what your opponent threatens or plans first before you make your list of candidate moves. Mark Dvoretsky has dealt with this theme in detail in many of his excellent books. I can only scratch the surface here:

116.01 Martinez, Marce (2431) – Cozianu, Costin (2557)
USCL ICC INT (3), 07.09.2010



[FEN "8/2n1k3/7K/p7/P2R4/1P5P/6r1/8 w - - 0 67"]

White has the clear plan to exchange the a5-pawn to reach a draw. Yet he should also look at Black's options carefully, as White's king is exposed.

67.b4 Ne6 68.Re4?

White only thinks his own way and does not parry all threats. He should have played 68.Rd1! axb4 (68...Ng7 69.bxa5 Nf5+ 70.Kh5 Kf6 71.h4 Rh2 72.Kg4 Ne3+ 73.Kg3=) 69.Rb1 Kf6



[FEN "8/8/4nk1K/8/Pp6/7P/6r1/1R6 w - - 0 70"]

The idea is 70.Rf1+ Ke5 71.Rb1 Rg3 72.Rxb4 Kf6 73.h4 Rg6+ 74.Kh7 and Black cannot win.

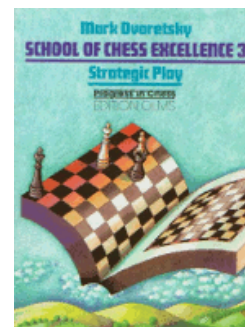
68...Kf6 69.bxa5 Rg6+ 70.Kh5

70.Kh7 Ng5+ 71.Kh8 Nf7+ 72.Kh7 Rg7#.

70...Ng7+ 71.Kh4 Nf5+ 72.Kh5 Rg5# 0-1

116.02 Vega Gutierrez, B (2215) – Cabrera Trujillo, J (2384)
ch-ESP El Sauzal ESP (5), 08.09.2010

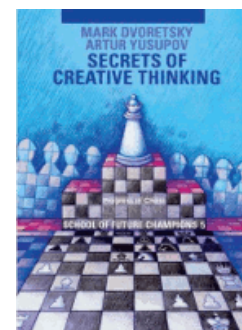
Purchases from our [chess shop](#) help keep [ChessCafe.com](#) freely accessible:



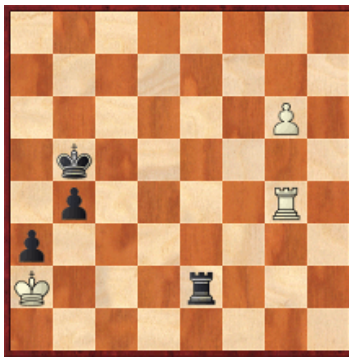
Strategic Play
by Mark Dvoretsky



Secrets of Positional Play
by Mark Dvoretsky



Secrets of Creative Thinking
by Mark Dvoretsky



[FEN "8/8/6P1/1k6/1p4R1/p7/K3r3/8 w - - 0 124"]

White's king must retreat, as 124.Kb3?? runs into 124...Rb2 mate. But where? Those fifty-percent chances are often surprisingly difficult to deal with. Try to decide this for yourself first before reading on.

124.Kb1?

124.Ka1! b3 125.Rg1 draws, as Black cannot drum up a mating attack in time now, since the advance a3-a2 is not with check.

124...b3?

This gives White another chance. 124...a2+ 125.Ka1 b3 126.Rg1 Kb4+ is the correct order of moves.

125.Rg1?

After 125.Rg5+, Black's king cannot hide from the checks and it is a draw.

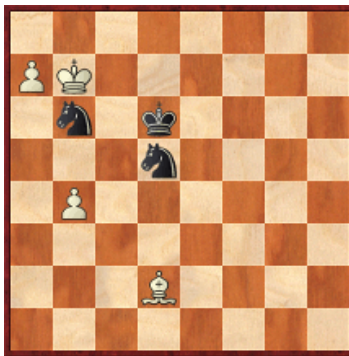
125...a2+ 126.Ka1 Kb4 0-1

White resigned, as 127.g7 is met by 127...Ka3 128.g8Q b2#.

In the next example I start a bit earlier.

116.03 Alvarado Diaz, A (2101) - Fernandez Garcia, Jose (2235)

ch-ESP El Sauzal ESP (4), 07.09.2010



[FEN "8/PK6/1n1k4/3n4/1P6/8/3B4/8 w - - 0 76"]

At first White plays strongly.

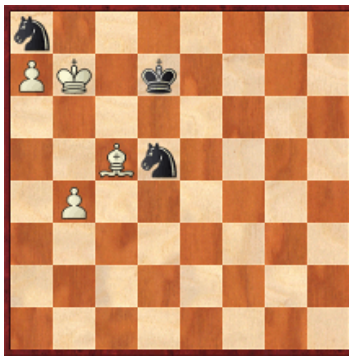
76.Be3! Na8

76...Nxe3 77.Kxb6 Nd5+ 78.Kb7 Nc7 79.b5+-.

77.Bc5+

The direct 77.Kxa8 Kc7 78.b5 Nxe3 79.b6+ Kxb6 80.Kb8 wins as well.

77...Kd7



[FEN "n7/PK1k4/8/2Bn4/1P6/8/8/8 w - - 0 78"]

78.Kxa8??

Too greedy. The b-pawn had to advance first to stop any counterplay prophylactically: 78.b5 Nac7 79.b6 Ne6 80.Ba3 Nec7 81.bxc7 Nxc7 82.Bb4 +.

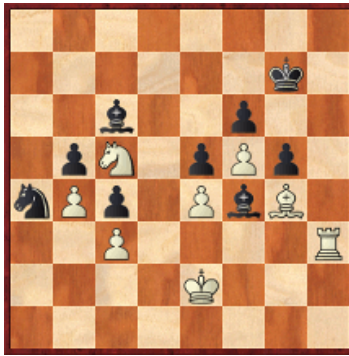
78...Kc8 0–1

As it is mate next move, White threw in the towel.

The last example is very difficult.

116.04 Markos, J (2566) – Kuipers, S (2370)

11th WUCC Men Zuerich SUI (1), 05.09.2010

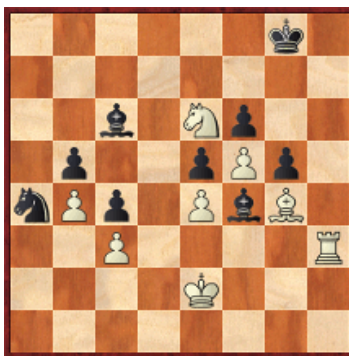


[FEN "8/6k1/2b2p2/1pN1pPp1/nPp1PbB1/2P4R/4K3/8 w - - 0 50"]

White can drum up an attack, but he must stop the defensive resources first.

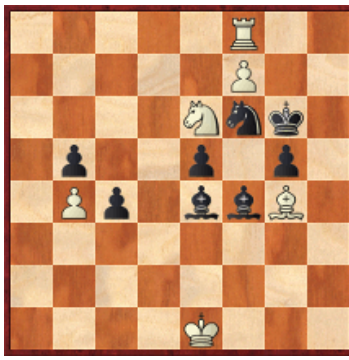
50.Kf3?

This runs into a breakthrough on the queenside. Correct is 50.Ne6+! Kg8



[FEN "6k1/8/2b1Np2/1p2pPp1/nPp1PbB1/2P4R/4K3/8 w - - 0 51"]

Now comes the prophylactic point 51.Ke1!! (As the direct 51.Rh6? is met by 51...Nxc3+ 52.Ke1 Nxe4=) 51...Bxe4 (51...Be8 52.Rh6 Nxc3 53.Rxf6 Bf7 54.Nxf4 Nxe4 55.Rb6 exf4 56.f6+—) 52.Rh6 Nxc3 53.Rxf6 Nd5 54.Rf8+ Kh7 55.f6 Kg6 56.f7 Nf6



[FEN "5R2/5P2/4Nnk1/1p2p1p1/1Pp1bbB1/8/8/4K3 w - - 0 57"]

57.Nd8! and White wins; e.g., 57...Nh7 58.Rg8+ Kf6 59.f8Q+ Nxf8 60.Rxf8+ Ke7 61.Ne6+.

50...Nxc5 51.bxc5 b4 52.Bh5

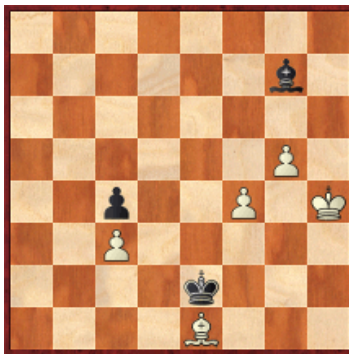
52.cxb4 c3 53.Ke2 c2+.

52...bxc3 53.Bg6 c2 54.Rh7+ Kf8 55.Rh8+ Ke7 0-1

Solutions to last month exercises

E115.01 Roque, M (2244) – Ranola, Y (2397)

6th Prospero A Pichay Cup Manila (7), 25.08.2010



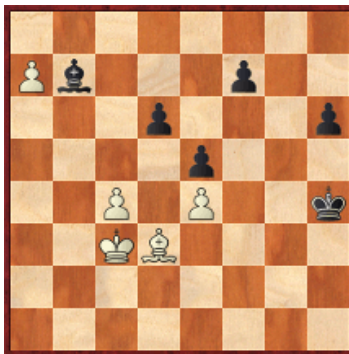
[FEN "8/6b1/8/6P1/2p2P1K/2P5/4k3/4B3 w - - 0 62"]

How did Roque storm Black's house?

62.f5! The pawns will beat Black's bishop. 62.Bg3?! wins as well, but is extremely complicated: 62...Bxc3 63.f5 Bd4 64.f6 c3 65.f7 c2 66.Bf4 Be3 67. Bxe3 Kxe3 68.f8Q c1Q and White mates in fifty-two moves according to the Nalimov tablebase. **62...Kxe1 63.f6 Bh8** 63...Bf8 64.g6 Kd2 65.g7+-. **64.Kh5 Kd2 65.Kg6 1-0** 65.Kg6 Kxc3 66.f7+.

E115.02 Short, N (2690) – Fluvia Poyatos, Joa (2499)

TCh-ESP CECLUB Honor Sestao (5), 27.08.2010



[FEN "8/Pb3p2/3p3p/4p3/2P1P2k/2KB4/8/8 w - - 0 45"]

Short found the shortest route to win. Can you do the same?

45.Kd2! 45.c5 dxc5 46.Kd2 is also playable and will transpose. But not 46. Kc4? Kg5 47.Kxc5 f5 48.exf5 e4=, **45...Kg5 46.Ke3 h5 47.c5!**

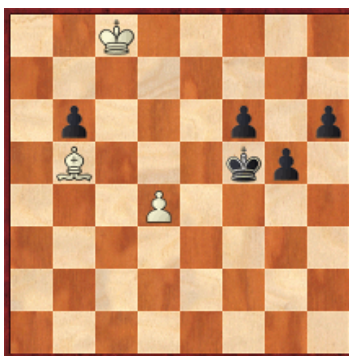


[FEN "8/Pb3p2/3p4/2P1p1kp/4P3/3BK3/8/8 b - - 0 47"]

Short's point, as now his king protects the e4-pawn. **47...h4** 47...dxc5 48.Bc4 f5 49.Bd5+-. **48.Ba6** 48.cxd6 Kf6 49.Ba6 wins as well. **48...h3** 48...Ba8 49. cxd6 Kf6 50.Bc4 h3 51.Kf3 Bxe4+ 52.Kg3 Bg2 53.Bf1+-. **49.Bxb7 h2 50. a8Q h1Q 51.Qd8+ Kg6 52.Qxd6+ f6 53.Kd2 Qb1 54.Qb6 Qa2+ 55.Kd3 Qa3+ 56.Kc4 Qa4+ 57.Qb4 Qc2+ 58.Kb5 Qd3+ 59.Qc4 1-0**

E115.03 Saez Coma, Alejandro (1477) – Serra Canals, Oriol (1607)

XI Miquel Mas Open Figueres (9), 18.08.2010



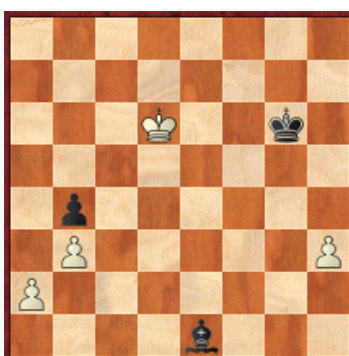
[FEN"2K5/8/1p3p1p/1B3kp1/3P4/8/8/8 w - - 0 72"]

How to assess this position with White to move?

72.d5? This allows Black to block the passed pawn. After 72.Bc6 Ke6 73.Kc7 +-, it can safely sail down the board to the eighth rank. **72...Ke5! 73.Bc6 Kd6 74.Kb7 b5 75.Kb6 b4 76.Ka5 b3 77.Ba4 b2 78.Bc2 Kxd5 79.Kb4 h5 80. Kc3 h4 81.Kxb2 h3 82.Bd1 Ke4 83.Ba4 g4 84.Bc6+ Ke3 85.Bd7 h2 86.Bc6 g3 0-1**

E115.04 Akesson, R (2470) – Vovk, Y (2561)

GM1 Valoz Cup Olomouc (3), 06.08.2010

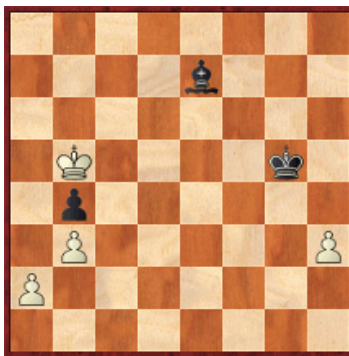


[FEN"8/8/3K2k1/8/1p6/1P5P/P7/4b3 b - - 0 55"]

Black to move and win.

Black's bishop must change diagonals: **55...Bh4!** 55...Bf2 56.Kd5 Bh4 wins as

well. **56.Ke6** 56.Kc5 Be7+ 57.Kb5 Kg5—+



[FEN "8/4b3/8/1K4k1/1p6/1P5P/P7/8 w - - 0 58"]

White cannot make progress on the queenside, so Black's king has all the time in the world. **56...Bf6 57.Kd5 Kg5 58.Ke6 Bd4 0–1** White resigned because of 59.Kd5 Bb2 60.Kc4 Ba3—+.

© 2010 ChessCafe.com. All Rights Reserved.

Comment on this month's column via our [Contact Page](#)! Pertinent responses will be posted below daily.

 [TOP OF PAGE](#)

 [HOME](#)

 [COLUMNS](#)

 [LINKS](#)

 [ARCHIVES](#)

 [ABOUT THE
CHESS CAFE](#)

[\[ChessCafe Home Page\]](#) [\[Book Review\]](#) [\[Columnists\]](#)
[\[Endgame Study\]](#) [\[The Skittles Room\]](#) [\[ChessCafe Archives\]](#)
[\[ChessCafe Links\]](#) [\[Online Bookstore\]](#) [\[About ChessCafe.com\]](#)
[\[Contact ChessCafe.com\]](#)

© 2010 BrainGamz, Inc. All Rights Reserved.
"ChessCafe.com®" is a registered trademark of BrainGamz, Inc.