



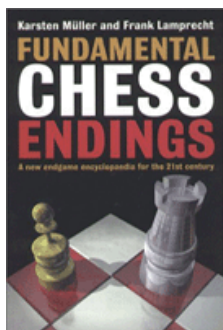
## COLUMNISTS

Endgame  
Corner

Karsten Müller

[\[Find us on Facebook.\]](#)

Translate this page



Play through and download  
the games from  
[ChessCafe.com](#) in the  
[ChessBase Game Viewer](#).

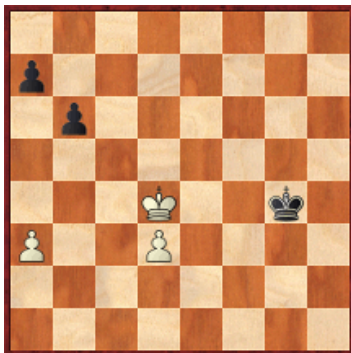


## The Art of Defense

I often need exercises for my students, but I find that some positions have no solution of the kind "Black to move and draw." An example of which is the following position:

117.01 Tan Jun Feng (1870) – Rian, K (2096)

7th Malaysia Open Kuala Lumpur MAS (2), 02.09.2010



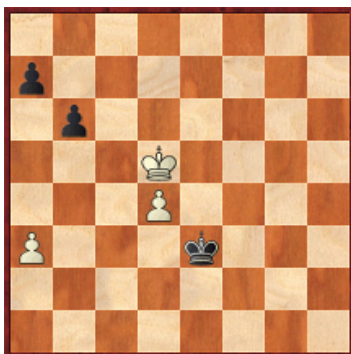
[FEN "8/p7/1p6/8/3K2k1/P2P4/8/8 b - - 0 51"]

Black loses whatever he does, but one defense is definitely more tenacious than the alternatives:

51...Kf4!

51...b5?! 52.Kc5 Kf5 53.Kxb5 Ke5 54.Ka6 Kd4 55.Kxa7 Kxd3 56.Kb6 Kc4 57.a4+-; 51...a5?! 52.a4 Kf4 53.Kd5 Ke3 54.Kc4!+-.

52.Kd5 Ke3 53.d4



[FEN "8/p7/1p6/3K4/3P4/P3k3/8/8 b - - 0 53"]

Now the moment has come, where Black missed his chance:

53...b5?!

After 53...a5!, White has to win a technically difficult queen ending: 54.a4 Kd3 55.Ke5 b5 56.axb5 (The direct 56.d5? runs into 56...bxa4 57.d6 a3 58.d7 a2 59.d8Q+ Kc2 60.Qxa5 Kb1

Purchases from our  
[chess shop](#) help keep  
[ChessCafe.com](#) freely  
accessible:



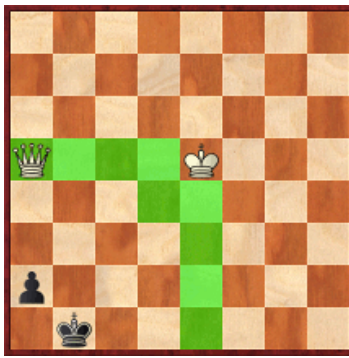
*Chess Endgames 7*  
by Karsten Müller



*Chess Endgames 6*  
by Karsten Müller

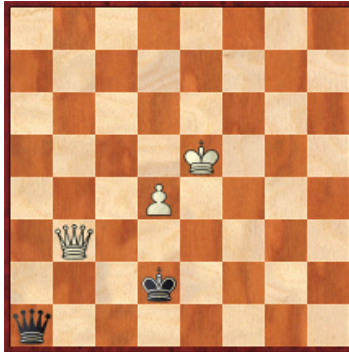


*Chess Endgames 5*  
by Karsten Müller



[FEN"8/8/8/Q3K3/8/8/p7/1k6 w - - 0 61"]

It is a draw, as White's king is just outside the winning zone.) 56...a4 57.b6 a3 58.b7 a2 59.b8Q a1Q 60.Qb3+ Kd2



[FEN"8/8/8/4K3/3P4/1Q6/3k4/q7 w - - 0 61"]

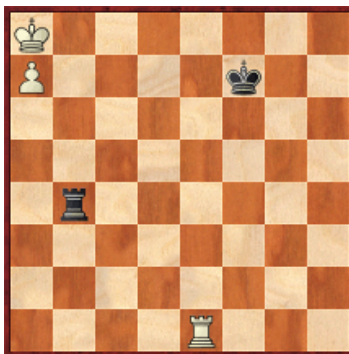
With optimal play White mates in seventy-two moves beginning with 61.Qh3 +-.

**54.Kc5 a5 55.d5 b4 56.Kc4 1-0**

56.axb4 a4 57.Kc4 Kd2 58.d6 wins as well of course.

The following position shows a typical winning configuration, but against best defense plenty of work still has to be done:

### 117.02 Educative Example



[FEN"K7/P4k2/8/8/1r6/8/8/4R3 b - - 0 1"]

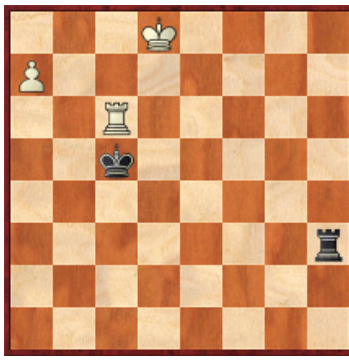
**1...Rb3!?**

Much better than 1...Rb2?!, which will be seen soon.

**2.Rh1 Ke7 3.Rh8 Kd6 4.Rb8 Ra3 5.Kb7 Rb3+ 6.Kc8**

The only way to make real progress, as after 6.Ka6?! Ra3+ 7.Kb6 Rb3+ 8.Ka5 Ra3+, White has to return with 9.Kb6.

**6...Rc3+ 7.Kd8 Rh3 8.Rb6+ Kc5 9.Rc6+**



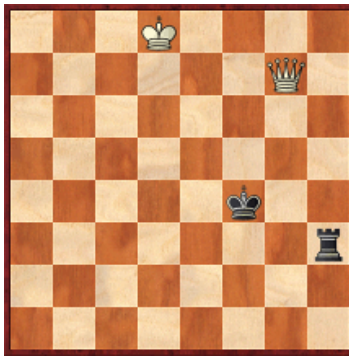
[FEN"3K4/P7/2R5/2k5/8/7r/8/8 b - - 0 9"]

Now it becomes clear why Black's rook had to go to the third rank:

**9...Kxc6!? 10.a8Q+ Kd6**

The rook cannot be won by a series of checks and White must win the ending queen vs. rook in a technical way.

**11.Qb8+ Kd5 12.Qb7+ Ke5 13.Qg7+ Kf4**



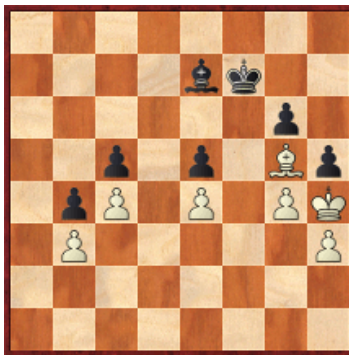
[FEN"3K4/6Q1/8/8/5k2/7r/8/8 w - - 0 14"]

The king and rook join forces, forcing White to take the long route; e.g., via breaking the third rank defense, the second rank defense, and finally winning the Philidor position for this type of endgame.

In the following example, I had first thought that the defender had missed a draw:

**117.03 Perez,En (2099) – Awad, O (1669)**

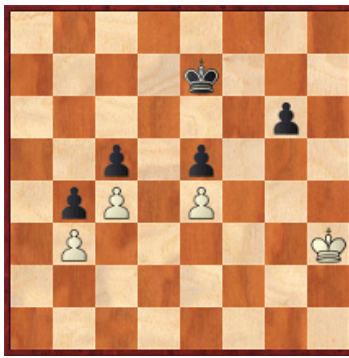
39th Olympiad Women Khanty-Mansiysk RUS (6.44), 27.09.2010



[FEN"8/4bk2/6p1/2p1p1Bp/1pP1P1PK/1P5P/8/8 b - - 0 50"]

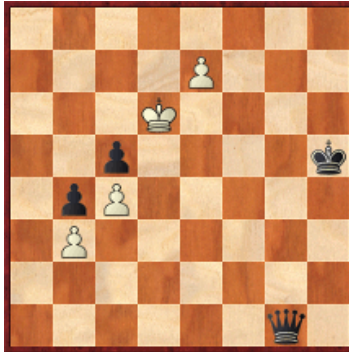
**50...Bxg5?!**

50...hxg4! should be played first, but it does not hold in the long run: 51.Kxg4 (51.Bxe7? gxh3 52.Kxh3 Kxe7



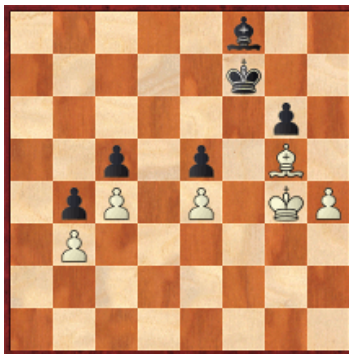
[FEN"8/4k3/6p1/2p1p3/1pP1P3/1P5K/8/8 w - - 0 53"]

This is surprisingly still drawn, but makes no sense from White's point of view of course: 53.Kg4 Kf7 54.Kh4 Kg8 55.Kg4 Kh7 56.Kg5 Kg7 57.Kh4 Kh6 58.Kg4 g5 59.Kf5 Kh5 60.Kxe5 g4 61.Kd6 g3 62.e5 g2 63.e6 g1Q 64.e7



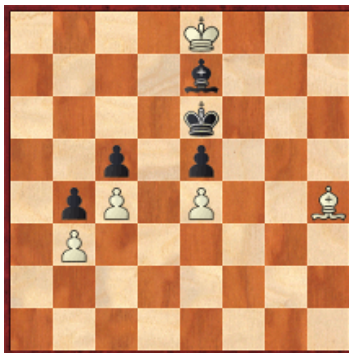
[FEN"8/4P3/3K4/2p4k/1pP5/1P6/8/6q1 b - - 0 64"]

The queen cannot win.) 51...Bf8 52.h4



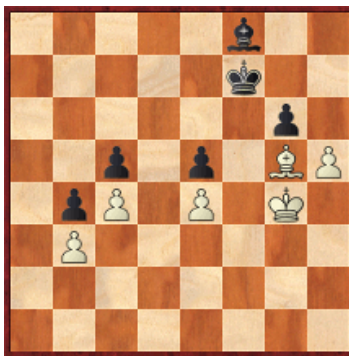
[FEN"5b2/5k2/6p1/2p1p1B1/1pP1P1KP/1P6/8/8 b - - 0 52"]

White will open a path by h5 and invade sooner or later; e.g., 52...Ke6 53.h5 Kf7 (53...gxh5+ 54.Kxh5 Bd6 (54...Kf7 55.Bd8 Ke8 56.Bh4 Kf7 57.Kg5 Be7 + 58.Kg4+-) 55.Kg6 Bc7 56.Kg7 Bd6 57.Bh4 Bc7 58.Kf8 Kd7 (58...Bd6+ 59.Ke8 Be7



[FEN"4K3/4b3/4k3/2p1p3/1pP1P2B/1P6/8/8 w - - 0 60"]

This is a nice trick, but White just answers 60.Bf2+-) 59.Kf7 Bd6 60.Bf6 Bc7 61.Be7 Bb6 62.Kf6+-) 54.Be3 Bd6 55.Bd2 Bf8 (55...Be7 56.Bh6 Bd6 57.Kh4 Be7+ 58.Bg5 Bd6 59.h6 Kg8 60.Bf6 Kh7 61.Kg5 Bc7 62.Be7 Bb6 63.Kf6 Kxh6 64.Kxe5+-) 56.Bg5



[FEN"5b2/5k2/6p1/2p1p1BP/1pP1P1K1/1P6/8/8 b - - 0 56"]

The zugzwang White was aiming for: 56...Kg7 57.Bd8 Kh6 58.Bc7 gxf5+ 59.Kf5 Bg7 (59...h4 60.Bxe5 h3 61.Bh2 Kg7 62.Ke6 Kg6 63.e5+-) 60.Bd6 h4 61.Kg4+-.

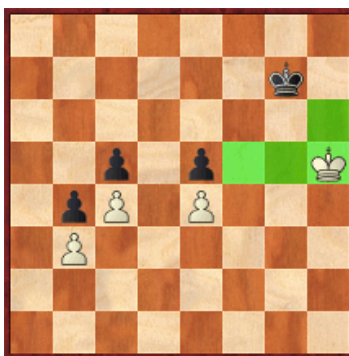
#### 51.Kxg5 hxg4

51...h4 52.Kh6 Kf6 53.g5+ Kf7 54.Kh7+-.

#### 52.Kxg4

Of course not 52.hxg4? Kg7 53.Kh4 Kh6=.

#### 52...Kf6 53.h4 Kf7 54.Kg5 Kg7 55.h5 gxf5 56.Kxh5



[FEN"8/6k1/8/2p1p2K/1pP1P3/1P6/8/8 b - - 0 56"]

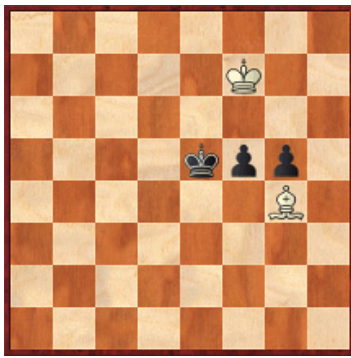
White wins as her king has occupied a key square.

#### 56...Kf6 57.Kh6 Ke7 58.Kg7 Ke6 59.Kg6 Ke7 60.Kf5 1-0

#### Exercises (Solutions next month)

E117.01 Mir Mahmoud, A (2014) – Muminova, N (2319)  
39th Olympiad Women Khanty-Mansiysk RUS (3.16), 23.09.2010



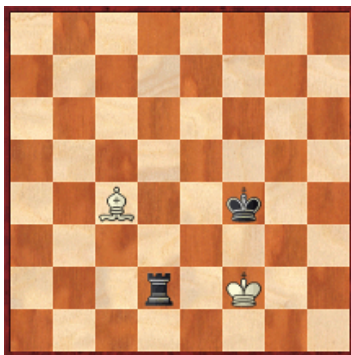


[FEN"8/5K2/8/4kpp1/6B1/8/8/8 w - - 0 90"]

Where will the bishop go?

**E117.02 Yang Kaiqi (2396) – Motylev, A (2704)**

TCh-CHN Shanghai CHN (9), 26.07.2010

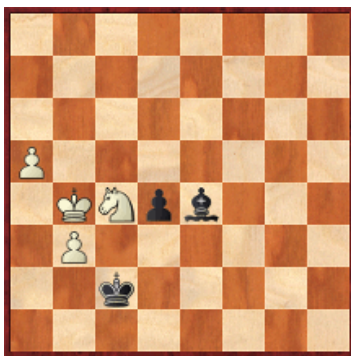


[FEN"8/8/8/8/2B2k2/8/3r1K2/8 w - - 0 110"]

White can still draw, but has to be careful.

**E117.03 Zeng Chongsheng (2350) – Wang Li (2383)**

TCh-CHN Ningbo City CHN (2), 17.04.2010



[FEN"8/8/8/P7/1KNpb3/1P6/2k5/8 b - - 0 59"]

Black to move and draw.

---

© 2010 ChessCafe.com. All Rights Reserved.

---

Comment on this month's column via our [Contact Page](#)! Pertinent responses will be posted below daily.

---

[\[ChessCafe Home Page\]](#) [\[Book Review\]](#) [\[Columnists\]](#)  
[\[Endgame Study\]](#) [\[The Skittles Room\]](#) [\[ChessCafe Archives\]](#)  
[\[ChessCafe Links\]](#) [\[Online Bookstore\]](#) [\[About ChessCafe.com\]](#)  
[\[Contact ChessCafe.com\]](#)

© 2010 BrainGamz, Inc. All Rights Reserved.  
"ChessCafe.com®" is a registered trademark of BrainGamz, Inc.