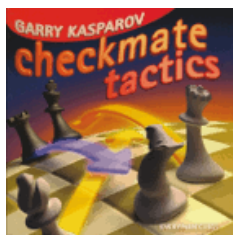




## COLUMNISTS

## Step by Step: Mate

Mark Donlan

[\[Find us on Facebook.\]](#)
[Translate this page](#)


Play through and download  
the games from  
[ChessCafe.com](#) in the  
[ChessBase Game Viewer](#).

## Step by Step: Mate

*Step by Step: Mate* is designed to improve your visualization skills. The premise is simple, try solving for mate from the first diagram. For best results, set the position up on the board and think for as long as you need without moving the pieces. If you are unable to solve for mate, refer to the diagrams below in which you can solve *Step by Step* for mate in one, mate in two, etc.

You can also print out this page and use it as a workbook exercise in a classroom setting. Spaces are provided for answers to be written; occasionally there will be positions that allow for two similar moves from the defender.

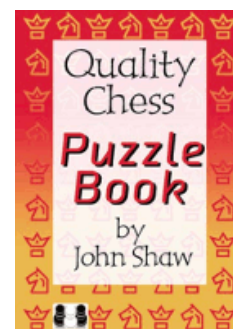
Solve for White to mate



[FEN "r6r/pp3ppp/3k1b2/2pb4/B4Pq1/  
2P1Q3/P5PP/1RBR2K1 w - - 0 20"]

[Scroll down for more options](#)

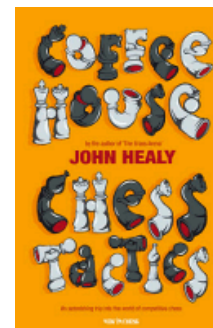
Purchases from our  
[chess shop](#) help keep  
[ChessCafe.com](#) freely  
accessible:



[Quality Chess Puzzle Book](#)  
by John Shaw



[CT-Art Mating Combinations](#)  
by Convekta



[Coffeehouse Chess Tactics](#)  
by John Healy

**Free Shipping!**  
On all Orders  
More than \$75!

UPS GROUND  
Only.



White mates in one



[FEN "r6r/pp3ppp/5b2/1B1b4/5Pq1/  
B1k5/P5PP/1R1R2K1 w - - 0 23"]

1) \_\_\_\_\_

### White mates in two



[FEN "r6r/pp3ppp/5b2/3b4/B1k2Pq1/  
B1P5/P5PP/1R1R2K1 w - - 0 22"]

1) \_\_\_\_\_

2) \_\_\_\_\_

### White mates in three



[FEN "r6r/pp3ppp/5b2/2kb4/B4Pq1/  
2P5/P5PP/1RBR2K1 w - - 0 21"]

1) \_\_\_\_\_

2) \_\_\_\_\_

3) \_\_\_\_\_

### White mates in four



[FEN "r6r/pp3ppp/3k1b2/2pb4/B4Pq1/  
2P1Q3/P5PP/1RBR2K1 w - - 0 20"]

- 1) \_\_\_\_\_
- 2) \_\_\_\_\_
- 3) \_\_\_\_\_
- 4) \_\_\_\_\_

---

Source Game: Mason – Perrin, New York, 1873

---

Answer: **20.Qxc5+ Kxc5 21.Ba3+ Kc4 22.Bb5+ Kxc3 23.Rbc1# 1-0**

---

© 2010 Mark Donlan. All Rights Reserved.

---

Comment on this week's puzzle via our [Contact Page](#).

---

 [TOP OF PAGE](#)

 [HOME](#)

 [COLUMNS](#)

 [LINKS](#)

 [ARCHIVES](#)

 [ABOUT THE  
CHESS CAFE](#)

[\[ChessCafe Home Page\]](#) [\[Book Review\]](#) [\[Columnists\]](#)  
[\[Endgame Study\]](#) [\[The Skittles Room\]](#) [\[ChessCafe Archives\]](#)  
[\[ChessCafe Links\]](#) [\[Online Bookstore\]](#) [\[About ChessCafe.com\]](#)  
[\[Contact ChessCafe.com\]](#)

© 2010 BrainGamz, Inc. All Rights Reserved.  
 "ChessCafe.com®" is a registered trademark of BrainGamz, Inc.