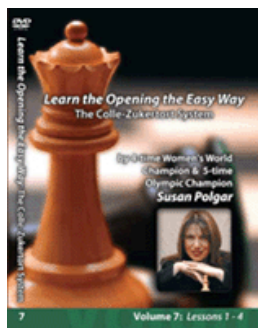




COLUMNISTS

Scholastic Chess

Steve Goldberg



Winning Chess the Easy Way (DVDs)
by Susan Polgar

CHESSTHEATRE

Play through and download the games from [ChessCafe.com](#) in the [DGT Game Viewer](#).

The Complete DGT Product Line

2007 Year-End Tournaments Part Two

Mackenzie Molner, now at New York University, got off to a good start at the 2007 World Junior Championship, defeating a Cuban junior rated over 200 points higher. Mackenzie annotates the game for us and explains why he was surprised to be matched with this opponent.

We're also privileged to have IM-elect Ray Robson annotate one of his games from the 6th North American FIDE Invitational, the tournament that provided his initial IM norm. Finally, I have included a game from the 2007 Pan American Intercollegiate Championship pitting former Murrow High School star IM Sal Bercys against WGM Katherine Rohonyan. It's instructive to see how Bercys gains a dominating position for his king, forces a rook exchange, and then pulls off a win in an opposite-colored bishop ending.

Everyman Quiz of the Month

Each month Everyman Chess sponsors our Everyman Quiz of the Month, offering a free chess book to three respondents with correct answers. This month, winners of our quiz will receive **The Easy Guide to the Classical Sicilian**, by GM Jouni Yrjola. Please note – winners within the last three months are ineligible for this month's contest. Send your answers to scholasticchess@chesscafe.com. Good luck!

We will accept all contest answers for one week following the appearance of the column, then randomly select our three winners from this group. So please e-mail your responses to me by February 20, 2008.

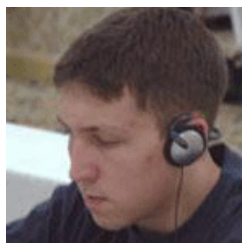
This month's questions come from our [January](#) column:

- Who was the winner of the first grade section of the 2007 "Grade Nationals" ?
 - Raymond Sun
 - Benjamin Moon
 - Andrew Starr
- How long did it take for Ray Robson to earn all three of his IM norms ?
 - Six days
 - Six weeks
 - Six months
- Which member of the 2008 Trophies Plus All America Team won his section of the 2007 "Grade Nationals"?
 - Joel Banawa
 - Ray Robson
 - Alex Heimann

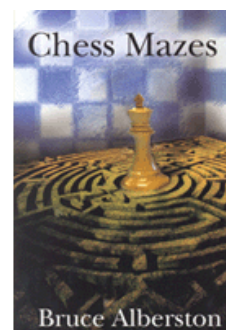
World Junior Championship, October 2-17, 2008 Yerevan, Armenia

In our [November 2007](#) column, IM Robert Hungaski said that fellow American player Mackenzie Molner (at right) "proved himself someone that must be taken seriously having a most energetic start beating some of the top seeds!" Indeed, in the first round of the recent World Junior Championship, Mackenzie defeated the 2513-rated IM Fidel Corrales, and has kindly annotated this victory for us.

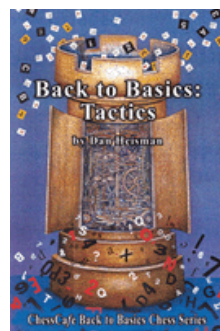
Molner, Mackenzie (2308) – Corrales, Fidel (2513)



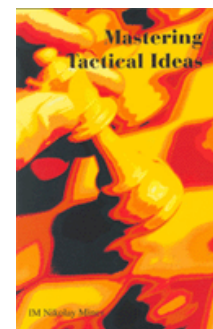
Check out these bestselling titles from [USCFSales.com](#):



Chess Mazes
by Bruce Alberston



Back to Basics: Tactics
by Dan Heisman



Mastering Tactical Ideas
by Nikolay Mineev

This game is from the first round of the tournament against the top Cuban player under 21, who I think has all his GM norms and is rated something like 2530. The interesting thing about this game was that he and my roommate were good friends and Corrales wanted to go clubbing the night before the tournament, but my roommate wasn't feeling well, so I went instead. We stayed out late and had a really good time, so it was a shock to have to play him the next day.

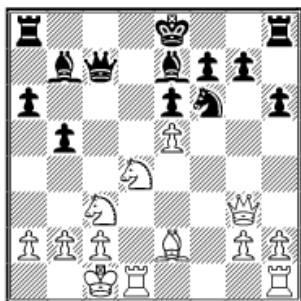
1.e4 c5 2.Nf3 d6 3.d4 cxd4 4.Nxd4 Nf6 5.Nc3 a6 6.Bg5

I decided to play 6.Bg5 instead of my usual 6.Be3.

6...e6 7.f4 h6 8.Bh4 Be7 9.Qf3 Qc7 10.0-0-0 Nbd7 11.Be2

11.Bd3 is the normal move, but I think 11.Be2 is a bit better and you will see why in the game.

11...b5 12.Bxf6 Nxf6 13.e5 Bb7 14.Qg3 dxe5 15.fxe5



We have a very critical position. The bishop on e2 controls the h5-square, which is where Black would like to put his knight.

15...Nd7

My opponent failed to recognize the danger. This looks normal, but gives a chance for a great attack. Probably

better was 15...Nd5. It loses a pawn, but leaves Black with a playable game after 16.Nxd5 Bxd5 17.Qxg7 0-0-0 18.Kb1.

16.Nxe6!

This is what he missed. If I play a normal move such as 16.Qxg7, then I am probably even a little worse after 16...Qxe5.

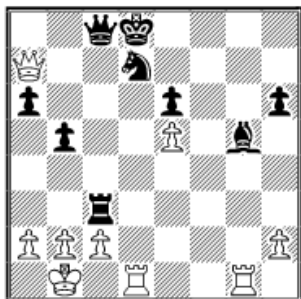
16...fxe6 17.Bh5+ Kd8 18.Qxg7 Rf8 19.Bg4 Bxg2 20.Rhg1 Bf3 21.Bxf3

I could also play 21.Bxe6, which is not so clear. 21.Bxf3 is a little cleaner.

21...Rxf3 22.Qg2 Bg5+

This is forced so that he can capture on c3; 22...Qb7 or 22...Qc6 lose material to 23.Rd3.

23.Kb1 Rxc3 24.Qxa8+ Qc8 25.Qa7!



I saw this position when I played 21.Bxf3 and here Black has almost no moves. 25...Rxc2 loses to 26.Rxd7 and, in addition to attacking the rook, I am also threatening h4, with the idea of Rg8+.

25...Rc7 26.Qb6 Qb7 27.Qxe6 Rc6 28.Qg8 + Kc7 29.Qf7 Kc8 30.e6 Nc5 31.Rxg5 1-0

I just have way too many threats and I'm up material now, so he's basically dead here. The interesting thing about this is that Black has almost no way to improve his play after 15...Nd7. It was a great way to start off the tournament and I was actually kind of sorry that I had to play him because of the night before. He still finished the tournament strong and ended up in a higher place than me.

**6th North American FIDE Invitational, October 28
– November 3, 2008, Chicago**

It was at the 6th North American FIDE Invitational this past fall that 13-year-old Ray Robson earned the first of his rapid-fire IM norms. He annotates his third-round victory for us.

Robson,R (2368) - Chow,A (2214)

6th North Am FIDE Inv Chicago USA (3), 29.10.2007 [B42]

1.e4 c5 2.Nf3 e6 3.d4 cxd4 4.Nxd4 a6

While preparing for the game, I looked at this line as well as others.

5.Bd3 Nf6 6.0-0 Qc7 7.Qe2 d6 8.c4

I have played this system before and usually with success.

8...g6 9.Nc3 Bg7 10.Nf3



One reason White retreats the knight is so that the bishop can go to f4. Also, it clears the d-file for a rook.

10...Nc6 11.Bf4 Nd7

My opponent said after the game that he was afraid of 11...0-0 12.c5. I was actually just going to continue as in the game. 11...0-0 12.Rac1

(12.c5 e5 13.cxd6 Qxd6 seems OK for Black.)

12.Rac1

I played my moves in this order, so that I might save a tempo on Rfd1.

12...0-0 13.Qe3 Nde5

In the game Ponomarev-Svidler 2006, 13...Nce5 was played.

14.Rfd1

Now I decided to put my rook here to put pressure on d6.

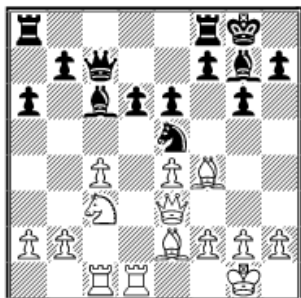
14...Nxf3+

14...Nxd3 15.Qxd3.

15.Qxf3 Ne5 16.Qe3 Bd7

16...Nxc4 17.Bxc4 Qxc4 18.Bxd6 Rd8 19.Nd5 Qxa2 20.Nb6.

17.Be2 Bc6



17...Nxc4 18.Bxc4 Qxc4 19.Bxd6 Rfe8 (19...Rfd8 20.Be7; 19...Rfc8 20.Nd5 Qxa2 21.Ne7+) 20.b3! Qc6 21.Nd5 Qxd6 (21...Qb5 22.Nc7) 22.Nf6 + Bxf6 23.Rxd6; 17...Rad8 18.Bg3 with f4 ideas.

18.Nd5!

Black's last move allows this tactic.

18...exd5

18...Bxd5 19.cxd5 is also better for White.

19.cxd5

After White an exchange c6, Black will have weak pawns on d6, c6, and a6.

19...Rfe8 20.b3

My opponent was in terrible time trouble, so all I had to do was make good, solid moves.

20...Qd7 21.dxc6 bxc6 22.Bg3

Black's knight only has one square to which it can move, so White is preparing f4.

22...Rad8 23.h3 Qb7

23...f5 24.exf5 Qxf5 25.Bxa6 Ra8 26.Bf1 Rxa2 27.f4.

24.f4 Bh6

24...Nd7 25.Rxd6.

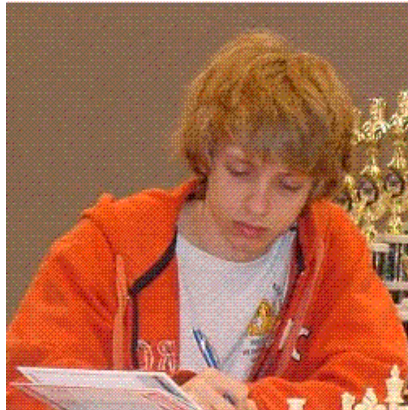
25.Qf2 d5 26.fxe5 Bxc1 27.Rxc1 dxe4 28.Qe3 1-0

Pan American Intercollegiate Championships, December 27-30, 2007, Miami

As they did two years ago, Miami Dade College hosted the recent Pan American Intercollegiate Championships, where twenty-eight teams from four nations competed in a six-round event.

For the second year in a row, the University of Texas-Dallas (UTD) "A" team took first place, finishing a full match point ahead of University of Maryland-Baltimore County (UMBC), the UTD-B team and New York University. A half-point back were teams from Miami Dade College, the increasingly strong University of Texas-Brownsville, Duke, Yale and the UMBC-B team.

Each spring, the top four U.S. schools from this event are seeded into the collegiate chess "Final Four." This year, we'll see UTD, UMBC, New York University and Miami Dade College competing.



IM Sal Bercys

Photo: Andi Rosen

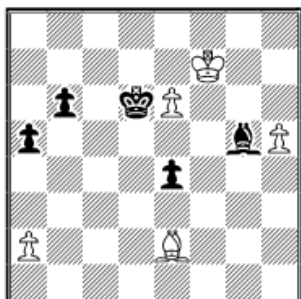
Here's a nice fifth round victory from freshman IM Sal Bercys, who played for the famed Edward R. Murrow High School in New York the past several years. He manages to get a dominant king position that brings home the point in an opposite-colored bishop ending.

Bercys,Salvijus (2494, UTD-A) – Rohonyan,Katerine (2312, UMBC-A)

2007 Pan Am Intercollegiate Championship Miami (5), 29.12.2007

**1.d4 Nf6 2.c4 e6 3.Nf3 d5 4.Nc3 c5 5.cxd5 exd5 6.g3 Nc6
7.Bg2 Be7 8.0-0 0-0 9.Bg5 cxd4 10.Nxd4 h6 11.Be3
Re8 12.Rc1 Bg4 13.h3 Be6 14.Qa4 Qd7 15.Nxe6 fxe6
16.Rfd1 Bf8 17.f4 Qf7 18.Bf2 Rad8 19.Qb3 Bb4 20.Nb5**

a6 21.Nd4 Nxd4 22.Bxd4 Bd6 23.Bxf6 gxf6 24.f5 Qg7
 25.fxe6 Qxg3 26.Qxg3+ Bxg3 27.Bxd5 Kf8 28.Rd3 Be5
 29.b4 Re7 30.Kf2 b6 31.Rg1 h5 32.h4 a5 33.b5 Ree8
 34.Kf3 Rd6 35.Rdd1 Red8 36.e4 Rc8 37.Rc1 Rxc1 38.
 Rxc1 Rd8 39.Rg1 Rc8 40.Bc6 Rc7 41.Rg6 Rh7 42.Bd5
 Ke7 43.Rg8 Bc7 44.e5 fxe5 45.Ke4 Kd6 46.Bb3 Kc5 47.
 Kf5 Kxb5 48.Kg6 Re7 49.Kf6 Bd6 50.Bd1 e4 51.Bxh5
 Rc7 52.Rg7 Rxg7 53.Kxg7 Be7 54.Be2+ Kc5 55.h5 Kd6
 56.Kf7 Bg5



Katerine appears to have everything covered for the moment, but Sal exploits her overworked bishop.

57.h6 1-0

Answers to Last Month's Quiz

1) How many players were on the U.S. team at the 2007 World Youth Chess Championship?

- a) 18
- b) 25
- c) 33

Answer: (c)

2) Which was the only U.S. player to win a gold medal at the 2007 WYCC?

- a) Ray Robson
- b) Daniel Naroditsky
- c) Alisa Melekhina

Answer: (b)

3) How many players competed in the 2007 National Youth Action tournament?

- a) 376
- b) 476
- c) 576

Answer: (b)

Have something newsworthy you'd like to share? E-mail me at scholasticchess@chesscafe.com. I can't promise that I'll be able to respond to each e-mail, but every one will be read and considered. For all games submitted, please provide the following information: (1) Names and age of both players; (2) Ratings of both players; (3) When and where the game was played; (4) The time control used in the game; and (5) Any other information you think would be helpful for us to know.

© 2008 Steve Goldberg. All rights reserved.

[\[ChessCafe Home Page\]](#) [\[Book Review\]](#) [\[Columnists\]](#)
[\[Endgame Study\]](#) [\[The Skittles Room\]](#) [\[Archives\]](#)
[\[Links\]](#) [\[Online Bookstore\]](#) [\[About ChessCafe.com\]](#) [\[Contact Us\]](#)

© 2008 CyberCafes, LLC. All Rights Reserved.

"**ChessCafe.com**®" is a registered trademark of Russell Enterprises, Inc.