



ENDGAME STUDIES

Combining beauty and practicality, the Endgame Study is one of the unique and subtle wonders of the Royal Game. **The Chess Cafe** is pleased to present, on a weekly basis, a selected endgame study for your enjoyment.

**His column
begins
October 11.**

The Complete Studies of Genrikh Kasparian

A.J. Roycroft, editor

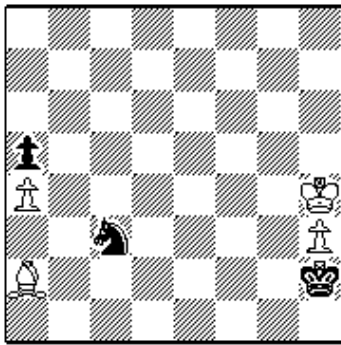
This 300+ page softcover edition contains all known 545 studies by the one of the greatest endgame study composers of all time.

Biographical information, photographs and additional material by John Roycroft supplement the studies. The result is one of the outstanding collection of endgame studies ever published. Suggested retail price is \$39.95, but it is offered directly from the publisher at the special price of \$34.95. For more ordering information, we invite you to visit [The Chess Cafe Bookstore](#).

Unless specifically designated otherwise, it is always White to move. Unlike problems, studies usually do not require a solution in a pre-determined number of moves. Simply look for the best moves and replies to work out the win or draw. And don't be discouraged if at first you don't succeed - working out the solution will be satisfying - even instructive!

The current study is presented immediately following. Items in our Archives, including this week's selection, are available for you to download.

The solution to this week's Endgame Study may be found farther down the page.



EG No 11525
Reprinted with
permission
S.Sudakov
special honourable
mention
*Shakhmatnaya
kompozitsia* 1997

Win



If you are interested in endgame studies, look into the premier international endgame study magazine, EG. To subscribe to EG, (four issues per year, in English), send 35 Dutch guilders to:

H. Benak, Kamperfoeliezoo 50, 2353 RS Leiderdorp, The Netherlands. Email: benak@tip.nl. In the U.S., subscriptions are \$22 and may be sent (and are payable) to: Phil Manning 2890 Lee Road, Shaker Hts., Ohio 44120 USA E-mail: p.manning@csu-e.csuohio.edu

Solution to This Week's Endgame Study

1.Kg4, with: **1...Nxa2 2.h4 Nc3 3.h5 Ne4 4.h6 Nf6+ 5.Kf5 Nh7 6.Kg6 Nf8+ 7.Kg7 Ne6+ 8.Kf6 Nf8 9.Ke7 Nh7 10.Kd6 Kg3 11.Kc5 Kf4 12.Kb5 Kg5 13.Kxa5 Kxh6 14.Kb5/i Nf6/ii 15.Kc6 Ng4 16.a5 Ne5+ 17.Kb5 Nf7 18.Kc5** wins, or **1...Nxa4 2.h4 Nc5 3.h5 Nd7 4.h6 Nf8 5.Bd5/iii a4 6.Bc6 a3 7.Bd5** wins.

i) 14.Kb6? Nf8 15.Kc6 Ne6 16.a5 Nd4+ 17. Kb6 Nf5 18.a6 Nd6 draw.

ii) 14...Nf8 15.a5 Ne6 16.Kb6 wins.

iii) 5.Kf5? Kg3 6.Kf6 Kh4 7.Kg7 Kh5 8.Bb3 Kg5 9.Bf7 a4 10.Bc4 Kh5 11.Ba2 Kg5 12.Bf7 a3 13.Ba2 Kh5 14.Bb3 Kg5 15.Bf7 Kf5 16.Kxf8 a2 17.Bxa2 Kg6 draw.

"This special honour is for the attempt to combine the uncombinable. Two not quite new theoretical positions with study-like finesses and with quite different material arise immediately after the first move

when Black is faced with a tricky choice."



[\[The Chess Cafe Home Page\]](#) [\[Book Reviews\]](#) [\[Bulletin Board\]](#) [\[Columnists\]](#)

[\[Endgame Studies\]](#) [\[The Ninth File\]](#) [\[The Skittles Room\]](#) [\[Archives\]](#)

[\[Links\]](#) [\[Online Bookstore\]](#) [\[About The Chess Cafe\]](#) [\[Contact Us\]](#)

Copyright 2000 CyberCafes, LLC. All Rights Reserved.

"**The Chess Cafe®**" is a registered trademark of Russell Enterprises, Inc.