



ENDGAME STUDIES

Combining beauty and practicality, the Endgame Study is one of the unique and subtle wonders of the Royal Game. **The Chess Cafe** is pleased to present, on a weekly basis, a selected endgame study for your enjoyment.

The Complete Studies of Genrikh Kasparyan

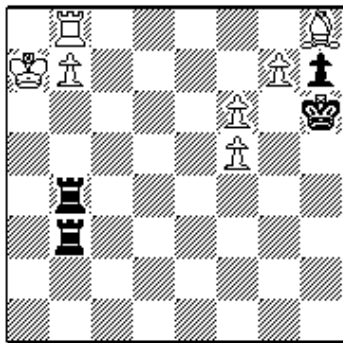
A.J. Roycroft, editor

This 300+ page softcover edition contains all known 545 studies by the one of the greatest endgame study composers of all time. Biographical information, photographs and additional material by John Roycroft supplement the studies. The result is one of the outstanding collection of endgame studies ever published. Suggested retail price is \$39.95, but it is offered directly from the publisher at the special price of \$34.95. For more ordering information, we invite you to visit [The Chess Cafe Bookstore](#).

Unless specifically designated otherwise, it is always White to move. Unlike problems, studies usually do not require a solution in a pre-determined number of moves. Simply look for the best moves and replies to work out the win or draw. And don't be discouraged if at first you don't succeed - working out the solution will be satisfying - even instructive!

The current study is presented immediately following. Items in our Archives, including this week's selection, are available for you to download.

The solution to this week's Endgame Study may be found farther down the page.



EG No. 11532
Reprinted with
permission

Nikolai Ryabinin
2nd prize
*Shakhmatnaya
kompozitsia*
1998

Win



If you are interested in endgame studies, look into the premier international endgame study magazine, EG. To subscribe to EG, (four issues per year, in English), send 35 Dutch guilders to:

H. Benak, Kamperfoeliezoo 50, 2353 RS Leiderdorp, The Netherlands. Email: benak@tip.nl. In the U.S., subscriptions are \$22 and may be sent (and are payable) to: Phil Manning 2890 Lee Road, Shaker Hts., Ohio 44120 USA E-mail: p.manning@csu-e.csuohio.edu

Solution to This Week's Endgame Study

"The white Rook must shift, but where to - c8, d8 or e8? We can rule out f8, but if we accept the first move the alternatives must take their turn."

1.Rd8/i Rxb7+ 2.Ka8 R7b4 (2...Rf7 3.Rd1) **3.Rd7 Rb8+ 4.Ka7 R8b4 5.Rd6 Rb7+ 6.Ka6 R7b4 7.f7+ Kh5 8.Rd5 Rb6+ 9.Ka5 Rb7 10.f6+**, with:

10...Kh6 11.g8N+ Kg6 12.f8N+ Kf7 13.Nh6+ (13.Rd7+? Kxg8) **13...Kxf8** (13...Ke8 14.f7+) **14.Rd8** mate, or **10...Kh4 11.Rd4+ Kh5** (11...Kh3 12.Rd3+) **12.Ka4/ii Rb1 13.Rd5+ Kh4 14.f8Q**, covering a3 and avoiding 14.Rb5? R1xb5 15.f8Q Rb1 16.Qc5 Ra1+ 17.Qa3 Ra7+

18.Kb5 R1xa3 19.g8Q R7a5+ 20.Kc4 R5a4+, when it becomes clear that had the white Rook been on c8 (instead of the selected d8 on move 1) the relative move "14.Rc5" would obstruct the path of the white Queen on f8 to a3.

i) "The Golden Mean!"

ii) 12.Rb4? Ra3+ 13.Ra4 Rab3.

"Geometrically speaking a powerful and fascinating mechanism. There is a dissonance arising from the contrasting variation_pair. But there's always a trace of tar somewhere in the honeypot. No doubt at all, such a complex idea demanded exceptional mastery and technique from the composer - who duly supplied it!"



[TOP OF PAGE](#)



[HOME](#)



[COLUMNS](#)



[LINKS](#)



[ARCHIVES](#)



[ABOUT THE
CHESS CAFE](#)

[\[The Chess Cafe Home Page\]](#) [\[Book Reviews\]](#) [\[Bulletin Board\]](#) [\[Columnists\]](#)

[\[Endgame Studies\]](#) [\[The Ninth File\]](#) [\[The Skittles Room\]](#) [\[Archives\]](#)

[\[Links\]](#) [\[Online Bookstore\]](#) [\[About The Chess Cafe\]](#) [\[Contact Us\]](#)

Copyright 2000 CyberCafes, LLC. All Rights Reserved.

"The Chess Cafe®" is a registered trademark of Russell Enterprises, Inc.