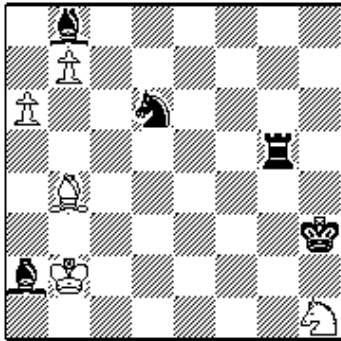


This 300+ page softcover edition contains all known 545 studies by the one of the greatest endgame study composers of all time. Biographical information, photographs and additional material by John Roycroft supplement the studies. The result is one of the outstanding collection of endgame studies ever published. Suggested retail price is \$39.95, but it is offered directly from the publisher at the special price of \$34.95. For more ordering information, we invite you to visit [**The Chess Cafe Bookstore.**](#)

Unless specifically designated otherwise, it is always White to move. Unlike problems, studies usually do not require a solution in a pre-determined number of moves. Simply look for the best moves and replies to work out the win or draw. And don't be discouraged if at first you don't succeed - working out the solution will be satisfying - even instructive!

The current study is presented immediately following. Items in our Archives, including this week's selection, are available for you to download.

The solution to this week's Endgame Study may be found farther down the page.



EG No 11529

Reprinted with
permission

Sergei Osintsev
4th commendation
*Shakhmatnaya
kompozitsia*
1997

Draw



If you are interested in endgame studies, look into the premier international endgame study magazine, EG. To subscribe to EG, (four issues per year, in English), send 35 Dutch guilders to:

H. Benak, Kamperfoeliezoo 50, 2353 RS Leiderdorp, The Netherlands. Email: benak@tip.nl. In the U.S., subscriptions are \$22 and may be sent (and are payable) to: Phil Manning 2890 Lee Road, Shaker Hts., Ohio 44120 USA E-mail: p.manning@csu-e.csuohio.edu

Solution to This Week's Endgame Study

1.Nf2+ Kh4 2.a7 Bxa7 3.Bxd6 Rd5 4.b8Q Bxb8 5.Bxb8 Rd2+ 6.Ka1, with:

6...Rxf2 7.Bg3+ Kxg3 stalemate, or 6... Bd5 7.Bg3+ Kxg3 8.Ne4+ Bxe4 stalemate, again!

A study with twin stalemates.



[TOP OF PAGE](#)



[HOME](#)



[COLUMNS](#)



[LINKS](#)



[ARCHIVES](#)



[ABOUT THE
CHESS CAFE](#)

[\[The Chess Cafe Home Page\]](#) [\[Book Reviews\]](#) [\[Bulletin Board\]](#) [\[Columnists\]](#)
[\[Endgame Studies\]](#) [\[The Ninth File\]](#) [\[The Skittles Room\]](#) [\[Archives\]](#)
[\[Links\]](#) [\[Online Bookstore\]](#) [\[About The Chess Cafe\]](#) [\[Contact Us\]](#)

Copyright 2000 CyberCafes, LLC. All Rights Reserved.

"**The Chess Cafe®**" is a registered trademark of Russell Enterprises, Inc.