



ENDGAME STUDIES

Combining beauty and practicality, the Endgame Study is one of the unique and subtle wonders of the Royal Game. **The Chess Cafe** is pleased to present, on a weekly basis, a selected endgame study for your enjoyment.



The Complete Studies of Genrikh Kasparyan

A.J. Roycroft, editor

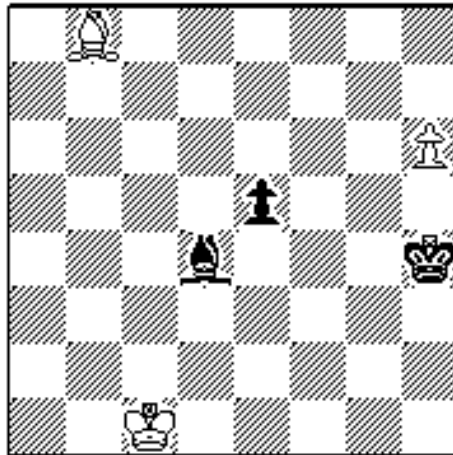
This 300+ page softcover edition contains all known 545 studies by the one of the greatest endgame study

Unless specifically designated otherwise, it is always White to move. Unlike problems, studies usually do not require a solution in a pre-determined number of moves. Simply look for the best moves and replies to work out the win or draw. And don't be discouraged if at first you don't succeed - working out the solution will be satisfying - even instructive!

The current study is presented immediately following. Items in our Archives, including this week's selection, are available for you to download.

*This endgame study is available with others in **Chess Cafe Reader** format. Click [here](#) for more information.*

**The solution to this week's Endgame Study
may be found farther down the page.**



P. Heuäcker

1930

Win

composers of all time. Biographical information, photographs and additional material by John Roycroft supplement the studies. The result is one of the outstanding collection of endgame studies ever published. Suggested retail price is \$39.95, but it is offered directly from the publisher at the special price of \$34.95. For more ordering information, we invite you to visit [The Chess Cafe Bookstore](#).



If you are interested in endgame studies, look into the premier international endgame study magazine, EG. To subscribe to EG, (four issues per year, in English), send 35 Dutch guilders to:

H. Benak, Kamperfoeliezoom 50, 2353 RS Leiderdorp, The Netherlands. Email: benak@tip.nl . In the U.S., subscriptions are \$22 and may be sent (and are payable) to: Phil Manning 2890 Lee Road, Shaker Hts., Ohio 44120 USA E-mail: p.manning@csu-e.csuohio.edu

Solution to This Week's Endgame Study

1 Ba7! Ba1!/i 2 Kb1 Bc3 3 Kc2! Ba1/ii 4 Bd4!! Bxd4/iii 5 Kd3 Ba1/iv 6 Ke4! and wins, as there is no defense against White's queening.

- i)** Now a little chase to bring the King nearer his goal on e4, to prevent the opening of the Bishop's diagonal.
- ii)** And now a surprising driving-on manoeuvre to make the mountain come to Mohammed.
- iii)** 4...exd4 would indeed move the mountain and Black would be subjected to an immediate blockade by 5 Kd3. Of course, the text continuation makes little difference.
- iv)** An unavoidable loss of tempo because Black cannot play ...e4 as long as the Bishop is en prise. And he never does manage to play it after White's next move.



[\[The Chess Cafe Home Page\]](#) [\[Book Reviews\]](#) [\[Bulletin Board\]](#) [\[Columnists\]](#)
[\[Endgame Studies\]](#) [\[The Skittles Room\]](#) [\[Archives\]](#)
[\[Links\]](#) [\[Online Bookstore\]](#) [\[About The Chess Cafe\]](#) [\[Contact Us\]](#)

Copyright 2001 CyberCafes, LLC. All Rights Reserved.
"The Chess Cafe®" is a registered trademark of Russell Enterprises, Inc.