

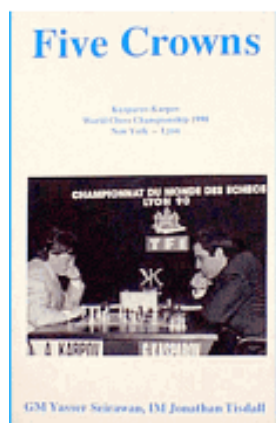


Inside Chess

Yasser Seirawan

Orders? Inquiries? You can
now call toll-free:

1-866-301-CAFE



Order the highly acclaimed
Five Crowns
by Yasser Seirawan
and
Jonathan Tisdall

Yasser Annotates:

Karpov - Anand, Linares 1991

Anatoly Karpov-Viswanathan Anand (1.0)

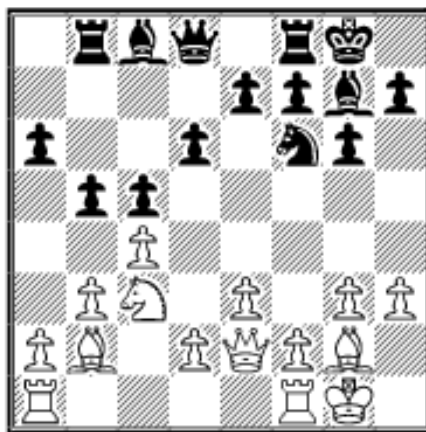
Linares (2) 1991

English A35

1.Nf3 c5 2.c4 Nc6 3.Nc3 Nd4!?

This perplexing move is an invention of GM Ljubojevic and for some strange reason is highly regarded by most of my colleagues.

4.e3 Nxf3+ 5.Qxf3 g6 6.b3?! Bg7 7.Bb2 d6 8.g3 Rb8! 9.Bg2 Nf6 10.h3 O-O 11.O-O a6 12.Qe2 b5!



Black has now equalized, since
13.cxb5 axb5 14.Nxb5 Ba6 is bad for
White.

13.d3 b4

Simpler yet is 13...Bb7, challenging
White to play e3-e4, which would
only result in a hole for him on d4.

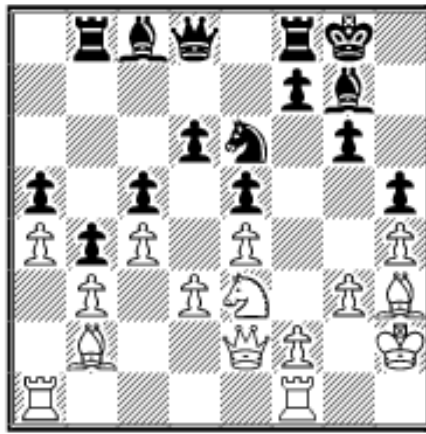
14.Nd1 a5 15.a4 e5?! 16.e4!

White voluntarily weakens his d4-square to reach a symmetrical position where his knight is better placed to spring forward. Karpov has carved an advantage out of thin air.

16...h5 17.h4

The immediate 17.f4 doesn't work because of 17...h4! 18.fxe5 Nh5! with complications favoring Black.

17...Ne8 18.Ne3 Nc7 19.Kh2 Ne6 20.Bh3



20...Bh6?

It's clear that Karpov is aiming for f2-f4. With the text Anand mistakenly attempts to prevent White's plan. Since it is extremely difficult for White to time f2-f4 at all because of his weak h4-pawn and getting it in allows Black to trade dark-squared bishops and sink a knight gleefully into d4, the Star of India should try to help the rest of his game. To this end,

moves such as ...Rb8-b7-e7-e8 and ...Kg8-h7 are to be preferred.

21.Ng2! Bg7 22.Rae1 Rb7 23.Bxe6?

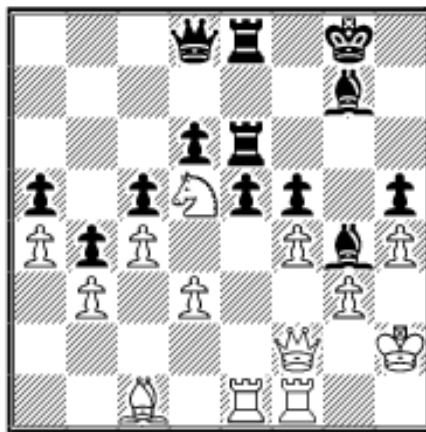
While this achieves the aim of f2-f4, it does so at a high price for the light squares. More petite moves such as Qe2-d1, f2-f3, Rf1-f2 and Re1-f1 seem to be in order.

23...Bxe6 24.f4 Bg4! 25.Qd2 Re7 26.Ne3 f5!

A critical decision; Karpov decides to let the bishop on g4 live, hoping his knight on d5 will become more powerful. I'd prefer 28.Nxg4, eliminating any danger.

27.exf5 gxf5 28.Nd5 Re6 29.Qf2 Rfe8 30.Bc1?

A mistake undoubtedly caused by time trouble. White had to play 30.fxe5 Bxe5 31.Bxe5 Rxe5 32.Rxe5 Rxe5 33.Re1 with a likely draw. Karpov doesn't like giving up easy draws when he's White. In deciding to gamble by playing on, he gives his speedy opponent a golden opportunity.



30...e4!

A powerful blow; suddenly both Black's bishops are fully charged.

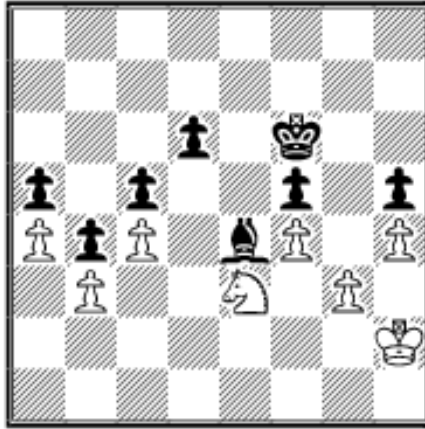
31.dxe4 Rxe4 32.Rxe4 Rxe4 33.Re1?

This weakens the f3-square, which allows Black to reposition his g4-bishop. Necessary was 33.Be3 Kh7 followed by Qd8-h8 when White would at least have groveling chances.

33...Rxe1 34.Qxe1 Kf7 35.Qd2

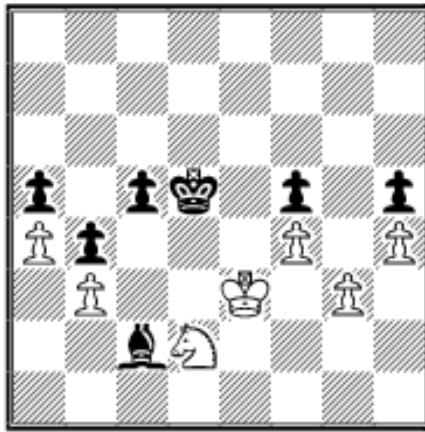
Black's ...Bg4-f3-e4 is unstoppable, since the d1-square is also vulnerable.

35...Bf3 36.Ne3 Be4 37.Bb2 Bxb2 38.Qxb2 Qf6 39.Qxf6+ Kxf6



This ending is a classic win for Black, because Black can use his majority on the queenside, while White's kingside pawns are fixed.

40.Kg1 Bb1 41.Nf1 Bc2 42.Nd2 Ke6 43.Kf2 d5 44.cxd5+ Kxd5 45.Ke3
(see next diagram)



Black to move and win.

45...Bd1! 46.Kd3 Bxb3! 0-1

An invigorating victory for "Vishy." By winning this game he's broken the psychological jinx that besets many a GM. Yes, Virginia, Karpov is beatable and the Anand-Karpov Candidates Match will be a good one.

 [TOP OF PAGE](#)

 [HOME](#)

 [COLUMNS](#)

 [LINKS](#)

 [ARCHIVES](#)

 [ABOUT THE CHESS CAFE](#)

[\[ChessCafe.com Home Page\]](#) [\[Book Reviews\]](#) [\[Columnists\]](#)
[\[Endgame Studies\]](#) [\[The Skittles Room\]](#) [\[Archives\]](#)
[\[Links\]](#) [\[Online Bookstore\]](#) [\[About The Chess Cafe\]](#) [\[Contact Us\]](#)

Copyright 2005 CyberCafes, LLC. All Rights Reserved.

"The Chess Cafe®" is a registered trademark of Russell Enterprises, Inc.