



COLUMNISTS

Inside Chess

Yasser Seirawan

*Winning Chess
Combinations*

by Yasser Seirawan

Yasser Annotates:

Christiansen - Gurevich, World Open 1989

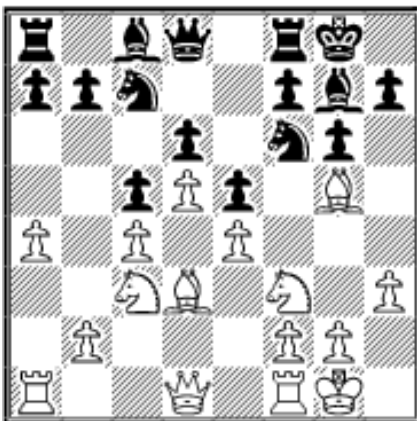
This month American GM Larry Christiansen makes an appearance as a guest annotator in Yasser's *Inside Chess* column...

Larry Christiansen – Ilya Gurevich
Gheorghiu Benoni [E90]
World Open 1989

1.c4 g6 2.Nc3 Bg7 3.d4 c5 4.d5 d6 5.e4 Nf6 6.Nf3 e6 7.h3 O-O 8.Bd3 Na6 9.O-O

It might be better to play 9.Bg5 awaiting Black's intentions in the center.

9...Nc7 10.a4 e5 11.Bg5



A standard finesse to inhibit Black's inevitable kingside activity.

11...h6 12.Bd2 Nh5 13.Qc1 g5!

13...Kh7?! merely puts the black king in the line of fire of the white bishop on d3, thereby making ...f7-f5 problematic.

14.Ne2 Nf4 15.Nxf4 gxf4 16.Kh2

16.Qc2, stalling ...f7-f5 was perhaps better. 16.b4 is premature on account of 16...Na6, when

White's queenside attack gets stuck in the mud.

16...f5 17.exf5 Bxf5 18.Bxf5 Rxf5 19.Qc2 Qd7 20.Rab1 Raf8

20...a5!? was a plausible alternative.

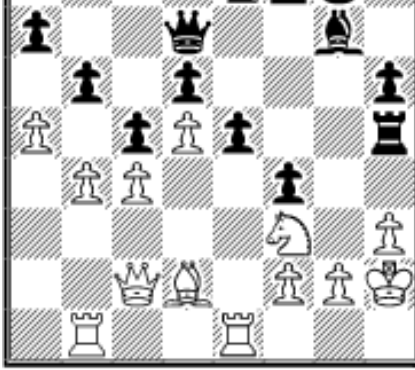
21.b4 Ne8 22.Rfe1

22.bxc5 dxc5 gives Black's knight the excellent d6-square.

22...b6 23.a5 Rh5!



The beginning of a brilliant sequence to harass my supposedly safe king.



24.bxc5 bxc5 25.a6 Qg4! 26.Rb7!

Not fearing 26...Rxh3+ 27.gxh3 Qxf3 28.Rg1, when suddenly Black's king is in trouble.

26...Rff5!

Young Gurevich prepares to throw the kitchen sink at me.

27.Qd3!

Black threatened 27...Rxh3+ 28.gxh3 Rh5 29.Ng1 f3.

27...Nf6 28.Rxa7 Qg6!

The fun begins.

29.Kg1!

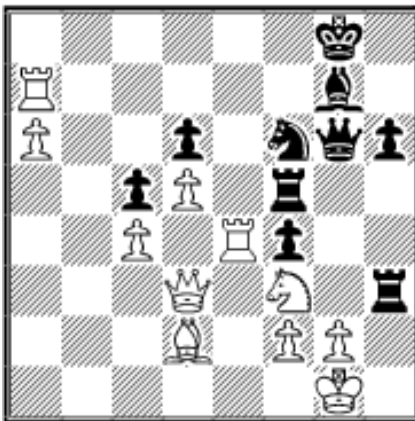
Black threatened 29...Ng4+ 30.Kg1 Rxh3.

29...e4!

Obviously Black cannot hesitate. 29...Rxh3? loses to 30.Nxe5! Rxd3 31.Nxg6 threatening Ne7+.

30.Rxe4 Rxh3!

Of course, 30...Nxe4 is hopeless.



31.Rxg7+!

I couldn't find any other answer here to the threat of ...Rfh5. 31.Rxf4 loses to 31...Rh1+! followed by ...Rh5+ and ...Qxd3.

31...Kxg7

31...Qxg7 loses to 32.Re7! Qxe7 (32...Qg6 33.a7) 33.Qxf5 and Black's position falls apart.

32.Bc3!

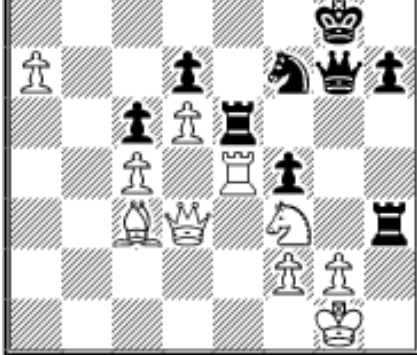
I thought the game was over now, since 32...Rfh5 loses to 33.Bxf6+ Kf8 (33...Kxf6 34.Re6+; 33...Qxf6 34.gxh3) 34.Bh4 R5xh4 35.Rxf4+ Ke7 36.Qe2+ and wins.

32...Re5!!



Is it a chessboard or a pin cushion? This position might set a record for number of pins.

33.Bxe5!



33.Nxe5!? Rxd3 34.Nxg6 Rxc3 35.Re1! Kxg6
36.Ra1 Ne8! 37.a7 Nc7 38.Ra6! Rxc4 39.Rxd6
+ Kh5! 40.Rc6 Na8 41.Rc8 Nb6 42.d6! Ra4
43.d7! Nxd7 44.a8=Q Rxa8 45.Rxa8 should
also win for White, though it is quite possible
Black might have an improvement somewhere.
I saw most of this, but figured the likelihood of
a draw was too great, and this was a must-win

game.

33...dxe5 34.a7 Nxe4 35.Qe2!

Of course not 35.a8Q? because of Rh1+ 36.Kxh1 Nxf2+ 37.Kg1 Nxd3.

35...Rxf3! 36.a8=Q Rxf2 37.Qb7+ Kg8 38.Qc8+ Kh7 39.Qd7+! Kh8!

39...Kg8 40.Q2g4 wins quickly.

40.Q7g4!

The only way to win. Wrong is 40.Q2g4? Rf1+!! 41.Kxf1 Ng3+ and Black draws.

40...Rxe2 41 Qxg6 Ng3 42.Kh2 Nf1+

42...Re1 43.Qxh6+ Kg8 44.Qe6+ Kf8 45.Kh3 wins as well.

43.Kh3 f3 44.Qxh6+ Kg8 45.Qe6+ Kg7 46.Qg4+

Avoiding the final trick 46.gxf3? Rh2+ 47.Kg4 Ne3+ and Black gets a perpetual!

46...Kh6 47.Qxf3! Re3 48.d6 1-0

Ilya Gurevich deserves a lot of credit for his great resourcefulness.



[TOP OF PAGE](#)



[HOME](#)



[COLUMNS](#)



[LINKS](#)



[ARCHIVES](#)



[ABOUT THE
CHESS CAFE](#)

[\[ChessCafe.com Home Page\]](#) [\[Book Reviews\]](#) [\[Columnists\]](#)

[\[Endgame Studies\]](#) [\[The Skittles Room\]](#) [\[Archives\]](#)

[\[Links\]](#) [\[Online Bookstore\]](#) [\[About The Chess Cafe\]](#) [\[Contact Us\]](#)

© 2007 CyberCafes, LLC. All Rights Reserved.

"**ChessCafe.com**®" is a registered trademark of Russell Enterprises, Inc.