



## COLUMNISTS

## Inside Chess

Yasser Seirawan



CHESTHEATRE

Play through and download  
the games from  
[ChessCafe.com](http://ChessCafe.com) in the  
[DGT Game Viewer](#).

[The Complete  
DGT Product Line](#)



## Yasser Annotates

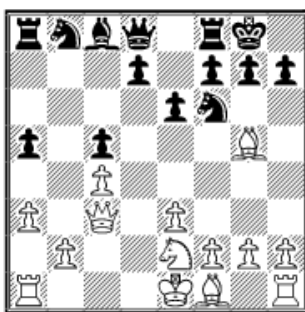
Beliaevsky–Tiviakov, Linares 1995

*Alexander Beliaevsky (2650) – Sergey Tiviakov (2625)*

Linares (1) 1995

Nimzo-Indian Classical [E32]

1.d4 Nf6 2.c4 e6 3.Nc3 Bb4 4.Qc2 0-0 5.a3 Bxc3+ 6.Qxc3 b6 7.Bg5 c5  
8.dxc5 bxc5 9.e3 a5!? 10.Ne2!?

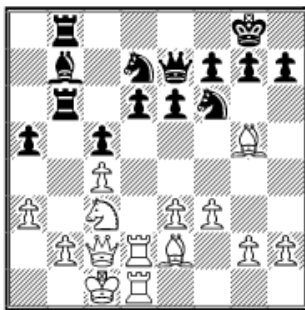


Recent theory has shown that Black does well by delaying ...Bc8-b7. Instead, Black plays ...d7-d6 and tries for counterplay along the b-file. White's only answer seems to have been, "Let's get the worse position." White has played Bf1-d3, and Ng1-e2, but has found it awkward to do useful things with his pieces in the near future. The c3-square is ideal for the knight; so White spends some tempi to get it there. The text is an interesting attempt to leave the f1-bishop uncommitted for the time being.

10...d6 11.0-0-0 Ra6

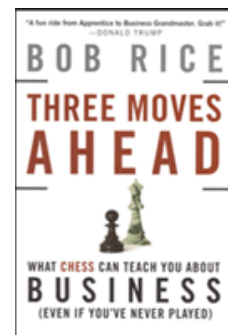
The first benefit from White's idea. The freeing move ...Nf6-e4 doesn't work: 11...Ne4? 12.Bxd8 Nxc3 13.Nxc3! Rxd8 14.Ne4, winning either the d6- or c5-pawn.

12.Qc2! Nbd7 13.Nc3 Bb7 14.f3! Qe7 15.Be2 Rb8 16.Rd2 Rb6 17.  
Rhd1

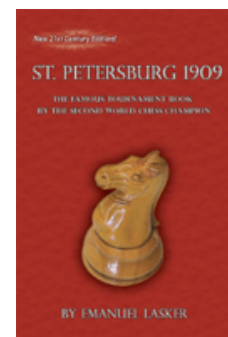


Both players have diligently kept to their respective strategies. Black is all set for his hit on the b2-pawn and White goes for the d6-pawn. However, a closer look reveals that Black has problems. The d7-knight isn't contributing and the b7-bishop seems to be in the way. White can storm up the kingside, but Black's only pawn-play is in the center where he's

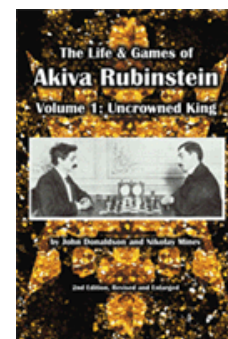
Check out the  
[May Savings](#) at  
[ChessCafe.com](http://ChessCafe.com):

*Three Moves Ahead*

by Bob Rice  
**Only \$9.95!**

*St. Petersburg 1909*

by Emanuel Lasker  
**Only \$9.95!**

*The Life & Games of  
Akiva Rubinstein*

by John Donaldson &  
Nikolay Minev  
**Only \$9.95!**

cramped. A final point, if necessary, White has the defense Nc3-a4, guarding the b2-pawn.

**17...Qf8?!**

I don't like this move. Black allows himself the reaction ...Nf6-e8, but the queen isn't very well placed here.

**18.Bf4 e5?!**

A heavy commitment. I prefer ...Nf6-e8 and ...Nd7-f6 to come, though the problem with that idea is that the queen on f8 is left with nothing to do. But after the text, Black will be worse for eons to come.

**19.Bg5 Ba8 20.Na4 Ra6 21.Qf5! g6 22.Qh3 Re8**

Proof positive that things have gone wrong. Black abandons his b-file attack in order to seize the defensive. While Black's position is bad, the text is no cure.

**23.Nc3 Re6 24.g4!**

A very nice move. It might seem natural to play e3-e4 and then concentrate on the center, but in that case Black has something to play for: the d4-square. The text doesn't leave Black any source of counterplay. Instead, it quietly introduces future threats and continues to ask Black what he intends to do for a plan.

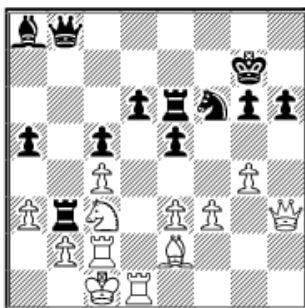
**24...Rb6 25.Qf1!**

White's whole queen maneuver creates a pleasing impression. He prepares to push up his kingside troops.

**25...Qb8 26.h4 Rb3 27.Rc2!**

Preventing any possibility of counterplay based upon ...Rb3xc3. White has done extremely well in this maneuvering phase of the game. Black hasn't made any progress on the queenside, while White's done great things in the center and he's pushing matters on the kingside.

**27...Kg7 28.h5 h6 29.Bxf6+ Nxf6 30.hxg6 fxg6 31.Qh3**



The first tangible benefits. Black's kingside structure has been compromised and White gets a half-open h-file for his attack. The game's first serious threat is g4-g5.

**31...Re8 32.Rh1 Ng8**

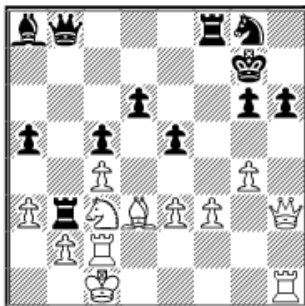
Sheer misery. After this the e4- and d5-squares fall into White's mitt. While 32...Rh8 means complete defense, it might have been necessary.

**33.Bd3!**

At last, White's bishop becomes a potent attacker. Besides the unpleasant

pressure against the g6-pawn, White can set up a favorable exchange of bishops and dominate the central squares.

**33...Rf8**



**34.g5!**

Blasting away on the kingside. If 34...h5 35.Qd7+ (35.Qe6 Qe8; 35.Bxg6 Bxf3) 35...Rf7 (35...Kh8 Rxh5+) 36.Qe6 Ne7 37.Rxh5, threatening Rh5-h7+, wins.

**34...Rxf3 35.gxh6+ Kh8 36.Qg4**

Simple chess. Black's kingside has become a sieve for White's pieces.

**36...Ne7 37.Be4!**

Beautiful strategic chess. Because of the h1-rook, Black has cheapo chances on the long diagonal. This move squashes any tricks and cements the center in White's favor.

**37...Rf7**

Not 37...Rxe3? 38.Qg5, winning, while 37...Rf8 38.Qe6 Qd8 39.Bxa8 Qxa8 40.Rd1 also wins for White.

**38.Qe6 Qf8 39.Bxa8 Rf6**

Now Black's problem is 39...Qxa8 40.Qxf7 Qxh1+ 41.Nd1 and White wins a piece.

**40.Qd7 Rf1+ 41.Rxf1 Qxf1+ 42.Nd1 Rd3 43.Rd2 Rxe3 44.Qe8+ 1-0**

A flawless and beautiful game by Big Al.